

PLANS

NOT

TO

SCALE

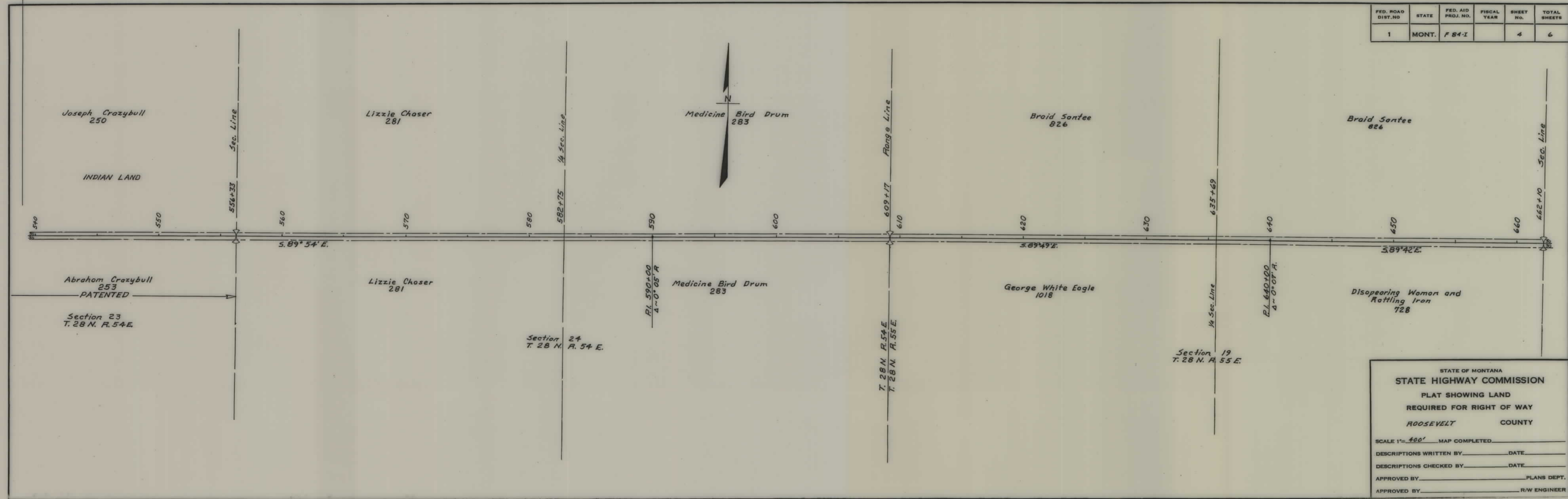
| FED. ROAD DIST. NO. | STATE | FED. AID PROJ. NO. | FISCAL YEAR | SHEET NO. | TOTAL SHEETS |
|---------------------|-------|--------------------|-------------|-----------|--------------|
| 1 | MONT. | F84-I | | 1 | 6 |



STATE OF MONTANA
STATE HIGHWAY COMMISSION
 PLAT SHOWING LAND
 REQUIRED FOR RIGHT OF WAY
 ROOSEVELT COUNTY

SCALE 1" = 400' MAP COMPLETED _____
 DESCRIPTIONS WRITTEN BY _____ DATE _____
 DESCRIPTIONS CHECKED BY _____ DATE _____
 APPROVED BY _____ PLANS DEPT. _____
 APPROVED BY _____ R/W ENGINEER _____

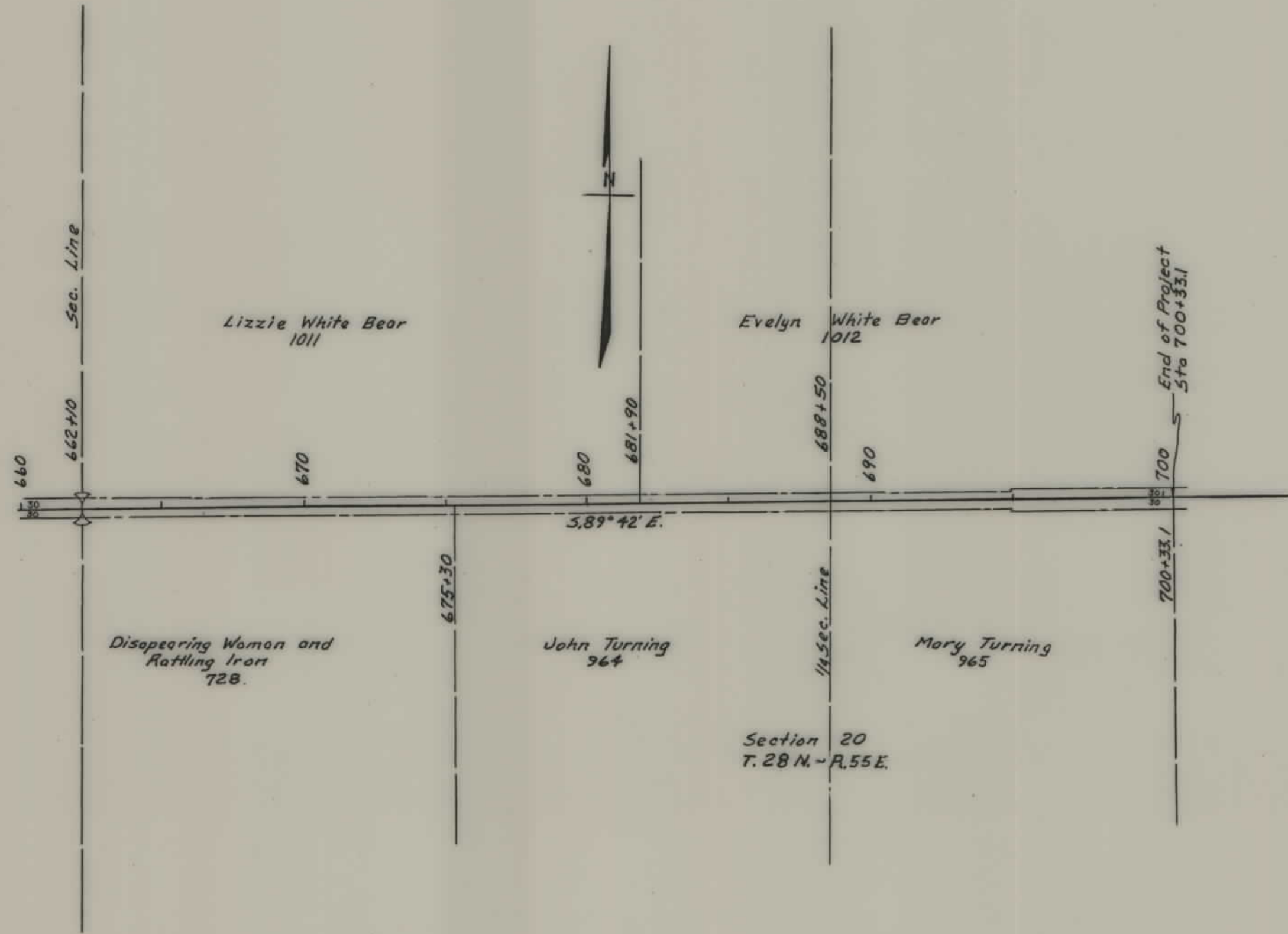
| FED. ROAD DIST. NO. | STATE | FED. AID PROJ. NO. | FISCAL YEAR | SHEET NO. | TOTAL SHEETS |
|---------------------|-------|--------------------|-------------|-----------|--------------|
| 1 | MONT. | F 84-1 | | 4 | 6 |



STATE OF MONTANA
STATE HIGHWAY COMMISSION
 PLAT SHOWING LAND
 REQUIRED FOR RIGHT OF WAY
 ROOSEVELT COUNTY

SCALE 1" = 400' MAP COMPLETED _____
 DESCRIPTIONS WRITTEN BY _____ DATE _____
 DESCRIPTIONS CHECKED BY _____ DATE _____
 APPROVED BY _____ PLANS DEPT.
 APPROVED BY _____ R/W ENGINEER

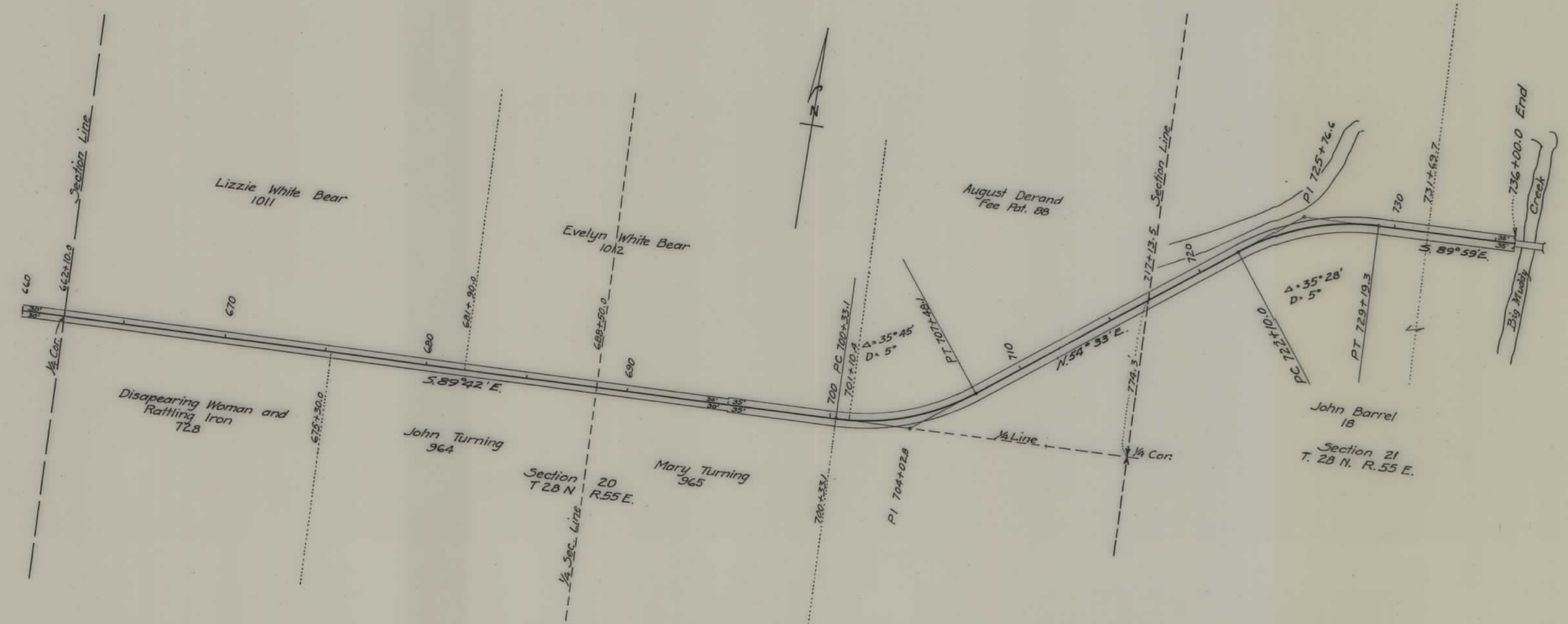
| FED. ROAD DIST. NO. | STATE | FED. AID PROJ. NO. | FISCAL YEAR | SHEET No. | TOTAL SHEETS |
|---------------------|-------|--------------------|-------------|-----------|--------------|
| 1 | MONT. | F 84-1 | | 5 | 6 |



STATE OF MONTANA
STATE HIGHWAY COMMISSION
 PLAT SHOWING LAND
 REQUIRED FOR RIGHT OF WAY
 ROOSEVELT COUNTY

SCALE 1" = 400' MAP COMPLETED _____
 DESCRIPTIONS WRITTEN BY _____ DATE _____
 DESCRIPTIONS CHECKED BY _____ DATE _____
 APPROVED BY _____ PLANS DEPT. _____
 APPROVED BY _____ R/W ENGINEER _____

| FED. ROAD DIST. NO. | STATE | F.A.P. | SHEET NO. | TOTAL SHEETS |
|---------------------|-------|--------|-----------|--------------|
| 1 | MONT. | 84-I | 6 | 6 |



DEPARTMENT OF THE INTERIOR
 UNITED STATES INDIAN SERVICE
 Fort Peck Agency, Nov. 16, 1925

Approved, (as shown hereon)
 subject to the provisions of the act
 of March 4, 1915 (38 Stat. L. 1188);
 Departmental regulations thereunder;
 and subject also to any prior valid
 existing rights and adverse claims.

P. H. Miller
 Superintendent & SDA