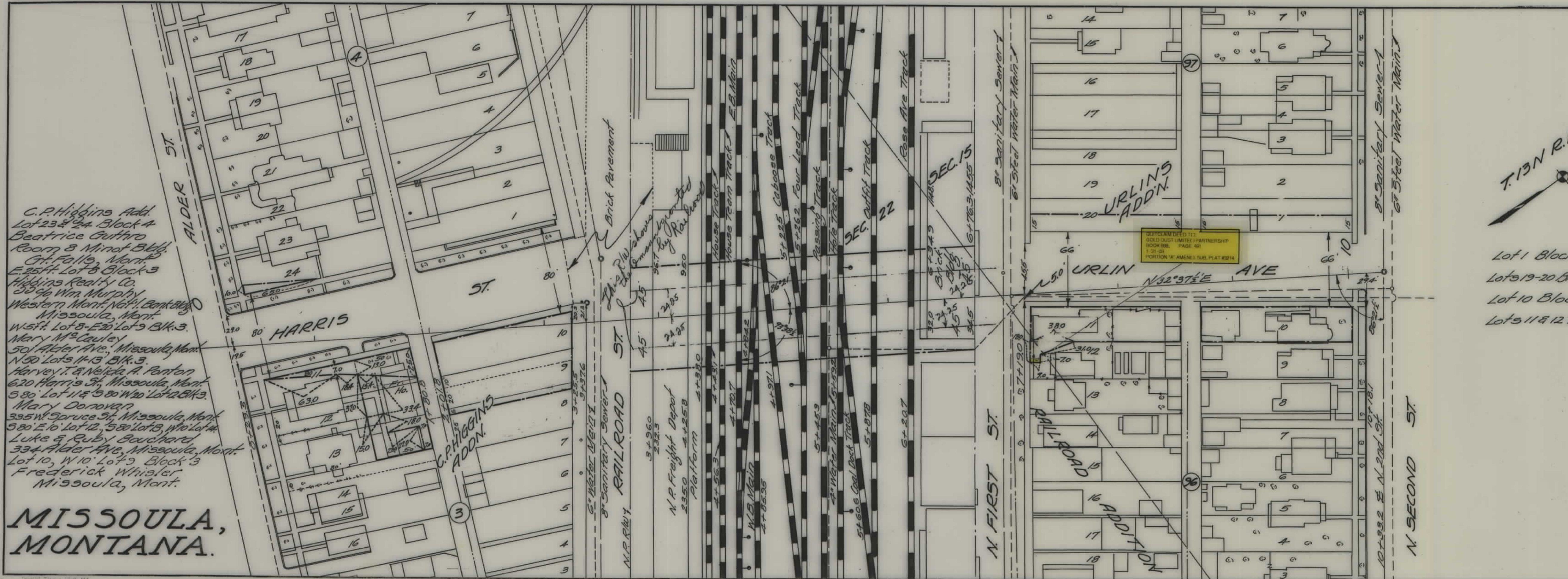


PLANS

NOT

TO

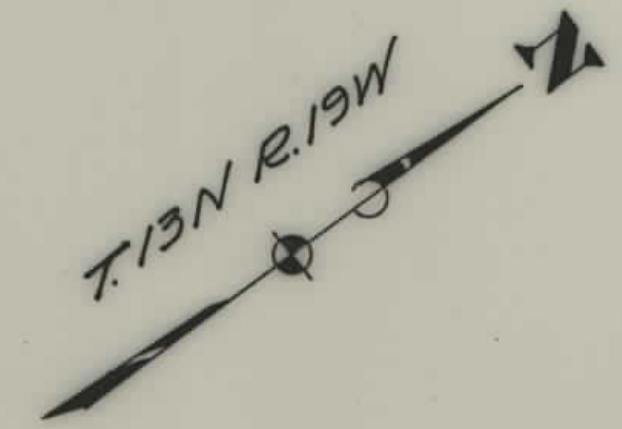
SCALE



C.P. Higgins Add.
 Lot 23 & 24 Block 4
 Beatrice Guthro
 Room 8 Minot Bldg.
 Gr. Falls, Mont.
 E. 25th Lot 8 Block 3
 Higgins Realty Co.
 50 96 Wm. Murphy
 Western Mont. Nat'l. Bank Bldg.
 Missoula, Mont.
 W. 5th Lot 8 - E. 2d Lot 9 Blk. 3.
 Mary M. Cauley
 50 Alder Ave., Missoula, Mont.
 N. 50 Lots 11-13 Blk. 3.
 Harvey T. & Nelida A. Ponton
 620 Harris St., Missoula, Mont.
 580 Lot 11 & 580 W. 2d Lot 12 Blk. 3.
 Mary Donovan
 335 W. Spruce St., Missoula, Mont.
 580 E. 10 Lot 12, 580 Lot 13, W. 10 Lot 14.
 Luke & Ruby Bouchard
 334 Alder Ave., Missoula, Mont.
 Lot 10, W. 10 Lot 9 Block 3
 Frederick Whisler
 Missoula, Mont.

**MISSOULA,
 MONTANA.**

FED. ROAD DIST. NO.	STATE	FED. AID PROJ. NO.	FISCAL YEAR	SHEET No.	TOTAL SHEETS
1	MONT.	F.A.G.M. 1-A		1	1



Urlin Add.
 Lot 1 Block 97 C.M. & Luea Roof
 527 N. 2nd St., Missoula, Mont.
 Lots 19-20 Block 97 Northwest Mutual Improvement Co.
 221 E. Broadway, Missoula, Mont.
 Lot 10 Block 96 Julia V. Groff
 Victor, Mont.
 Lots 11 & 12 Block 96 Shyman Nassar
 338 N. 1st St.
 Missoula, Mont.

STATE OF MONTANA
 STATE HIGHWAY COMMISSION
 PLAT SHOWING LAND
 REQUIRED FOR RIGHT OF WAY
 MISSOULA COUNTY

SCALE 1" = 50' MAP COMPLETED

DESCRIPTIONS WRITTEN BY E.A.P. DATE 9-29-37
 DESCRIPTIONS CHECKED BY C.K.D. DATE 9-29-37

APPROVED BY _____ PLANS DEPT.
 APPROVED BY _____ R/W ENGINEER

ABin
10-10-03

RIGHT OF WAY BUREAU
TRANSMITTAL MEMO

TO: Shane Mintz, Acting Supervisor
Real Estate Services Section

FROM: *for* *Ramona Elkins*
Bruce J. Masiak
R/W Plans Section

DATE: August 14, 2003

SUBJECT: Quitclaim Deed
Project: FAGM 1-A
Harris Street Underpass
Parcel 7

Sheet 1 of the right of way plans has been revised to reflect the sale of land per your memo dated February 27, 2003.

initial: *BJM*

cc: Steve Nickel

