

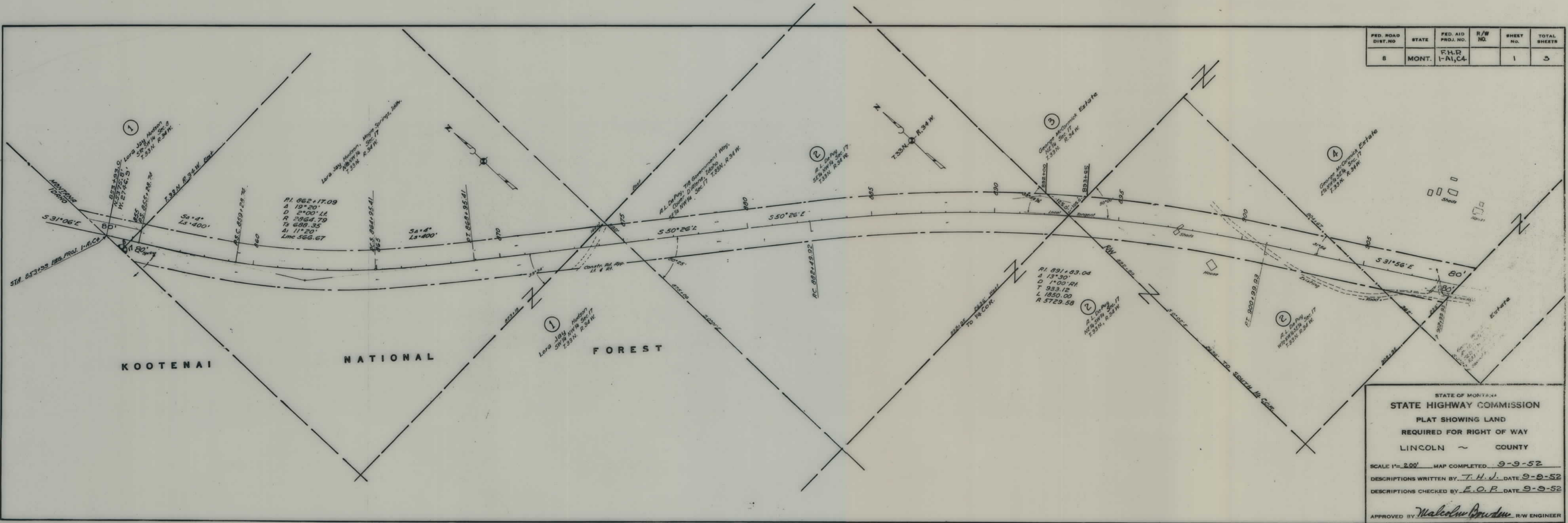
PLANS

NOT

TO

SCALE

FED. ROAD DIST. NO.	STATE	FED. AID PROJ. NO.	R/W NO.	SHEET NO.	TOTAL SHEETS
8	MONT.	F.H.P. 1-A1, C4		1	5

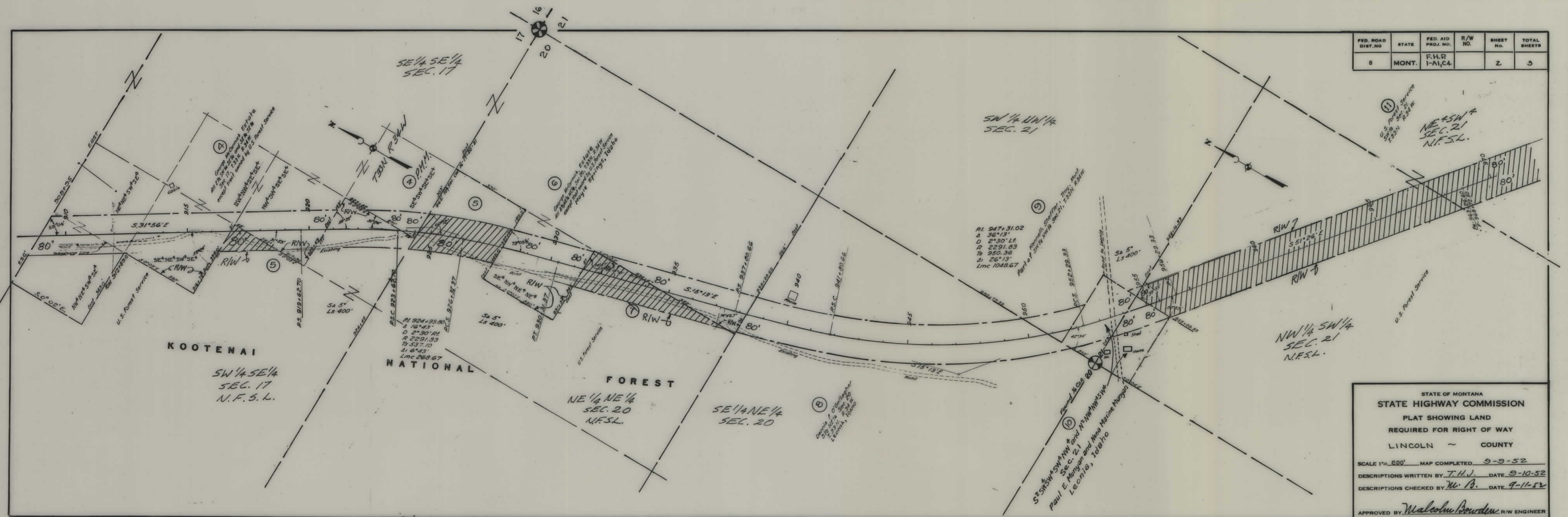


STATE OF MONTANA
 STATE HIGHWAY COMMISSION
 PLAT SHOWING LAND
 REQUIRED FOR RIGHT OF WAY
 LINCOLN ~ COUNTY

SCALE 1" = 200' MAP COMPLETED 9-9-52
 DESCRIPTIONS WRITTEN BY T.H.J. DATE 9-8-52
 DESCRIPTIONS CHECKED BY E.O.P. DATE 9-9-52

APPROVED BY *Malcolm Bourdieu* R/W ENGINEER

FED. ROAD DIST. NO.	STATE	FED. AID PROJ. NO.	R/W NO.	SHEET NO.	TOTAL SHEETS
8	MONT.	F.H.R. 1-A1,C4		2	3

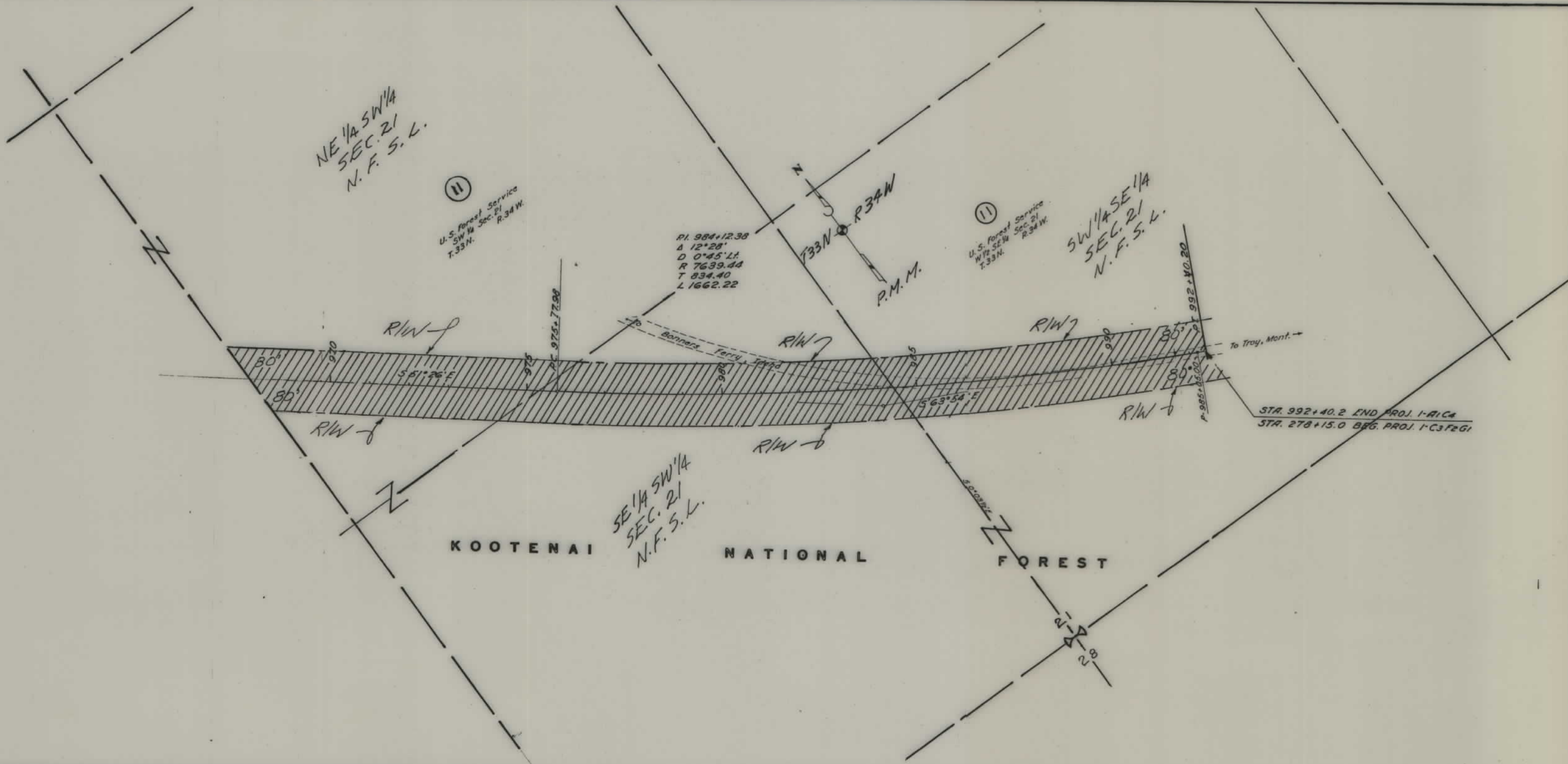


STATE OF MONTANA
STATE HIGHWAY COMMISSION
PLAT SHOWING LAND
REQUIRED FOR RIGHT OF WAY
LINCOLN COUNTY

SCALE 1" = 200' MAP COMPLETED 9-9-52
 DESCRIPTIONS WRITTEN BY T.H.V. DATE 9-10-52
 DESCRIPTIONS CHECKED BY W.P. DATE 9-11-52

APPROVED BY Malcolm Bowden R/W ENGINEER

FED. ROAD DIST. NO.	STATE	FED. AID PROJ. NO.	R/W NO.	SHEET NO.	TOTAL SHEETS
8	MONT.	F.H.P. 1-A1, C4		3	3



STATE OF MONTANA
STATE HIGHWAY COMMISSION
 PLAT SHOWING LAND
 REQUIRED FOR RIGHT OF WAY
 LINCOLN ~ COUNTY

SCALE 1" = 200' MAP COMPLETED 9-8-52
 DESCRIPTIONS WRITTEN BY T.H.V. DATE 9-9-52
 DESCRIPTIONS CHECKED BY M.B. DATE 9-11-52

APPROVED BY Malcolm Bowden R/W ENGINEER