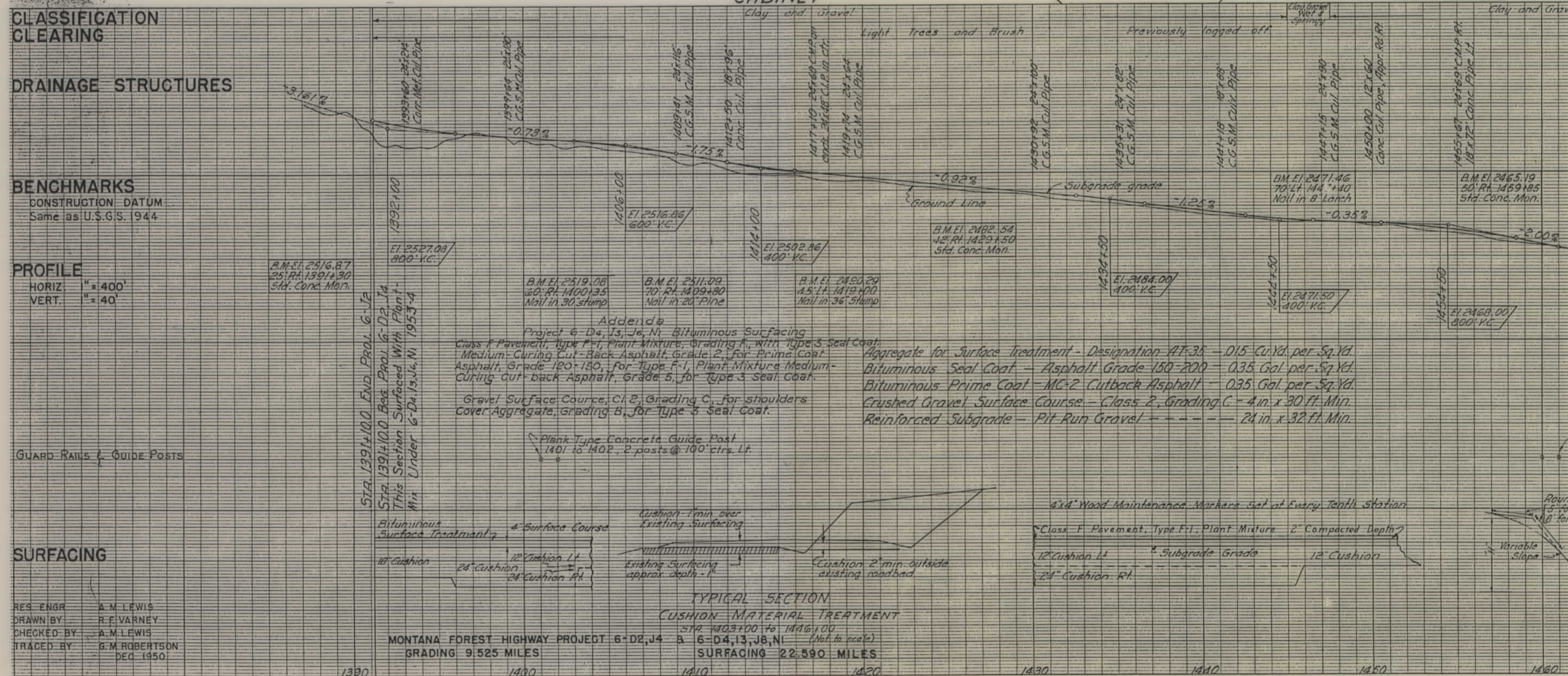
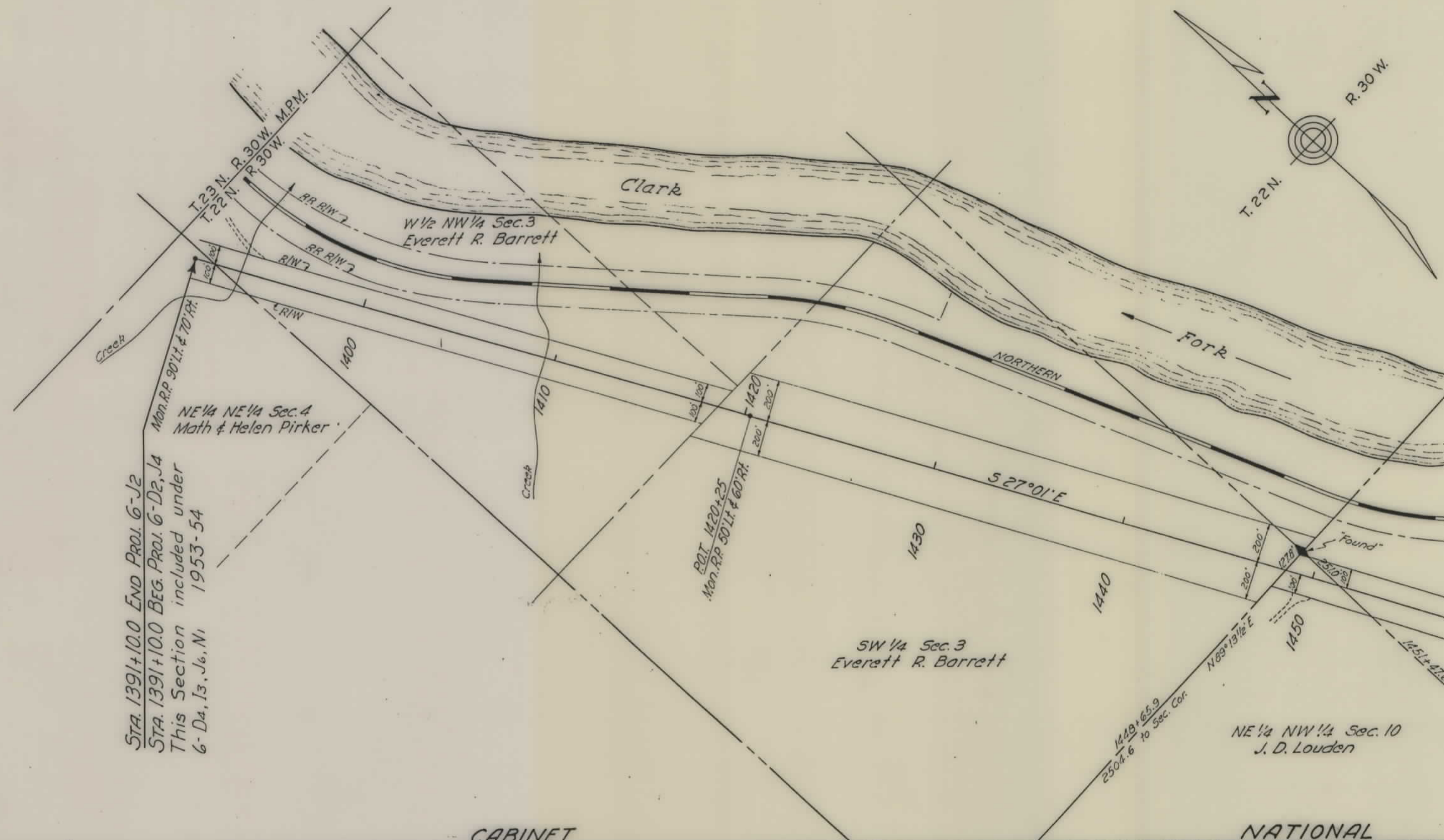


PLANS  
NOT  
TO  
SCALE

PROJECT NO. - DESIGNATION	SHEET NO.	TOTAL SHEETS
FHP 6-D2, J4 6-D4, I3, J6, N1	1	6
CLARK FORK HIGHWAY		

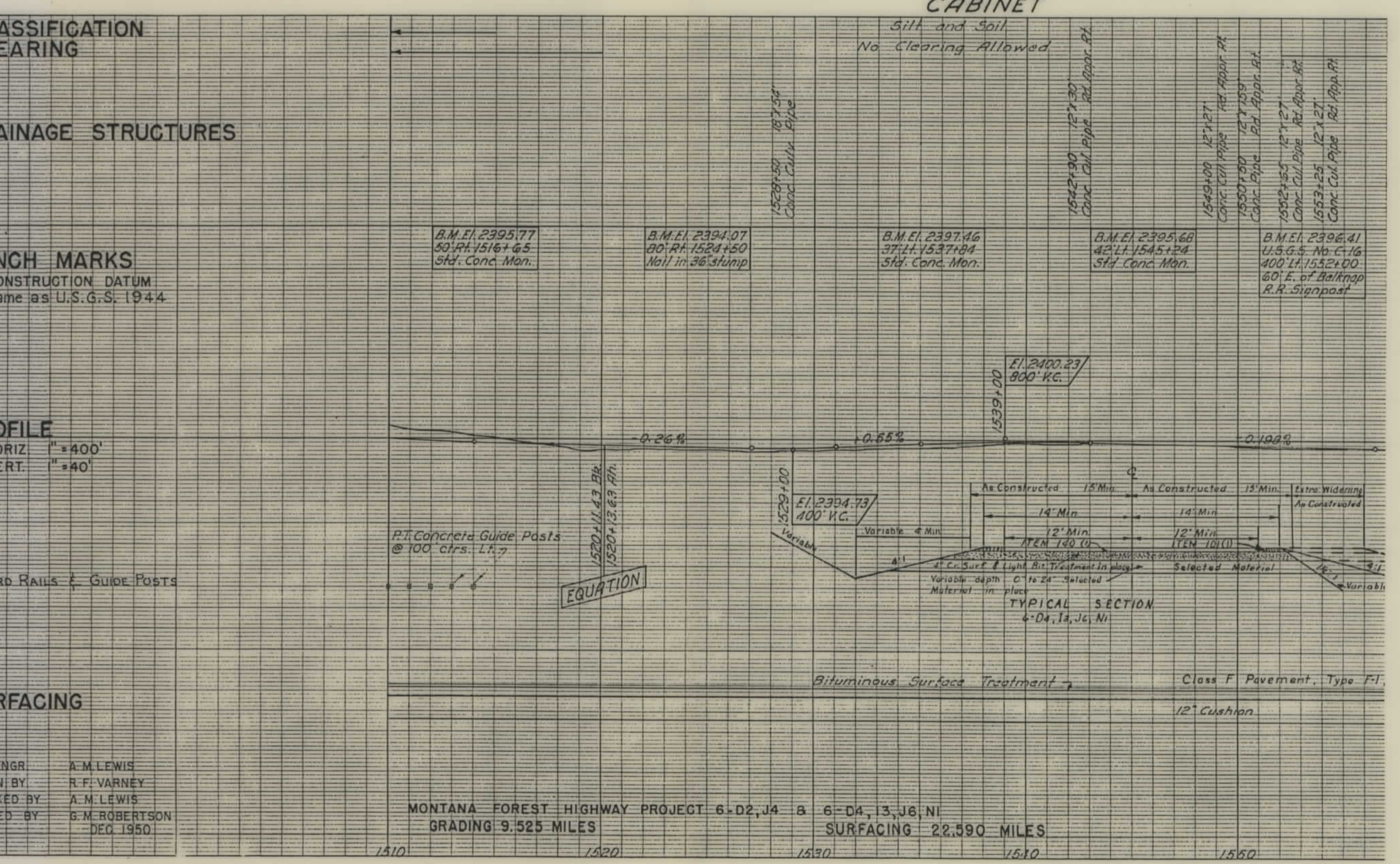
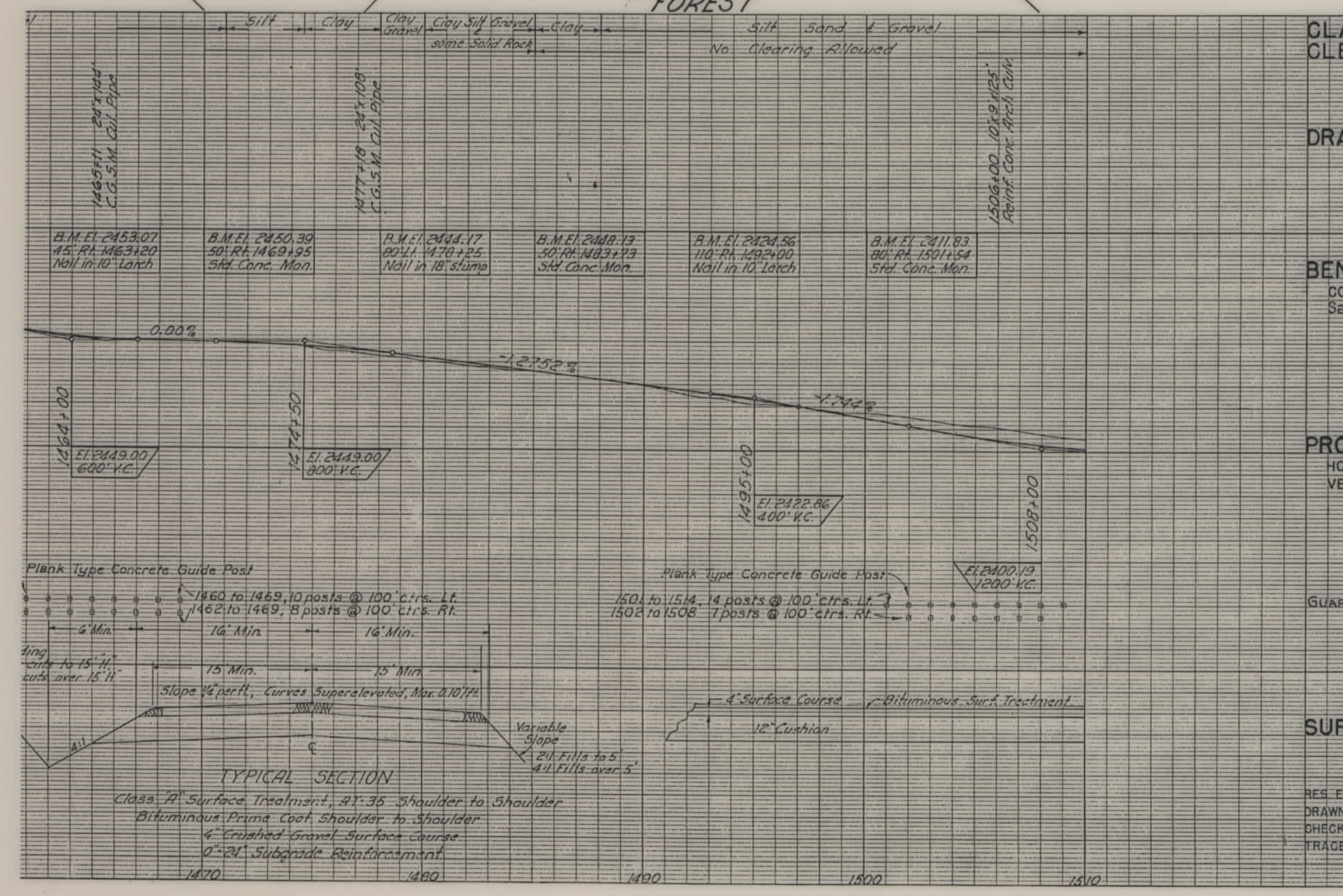
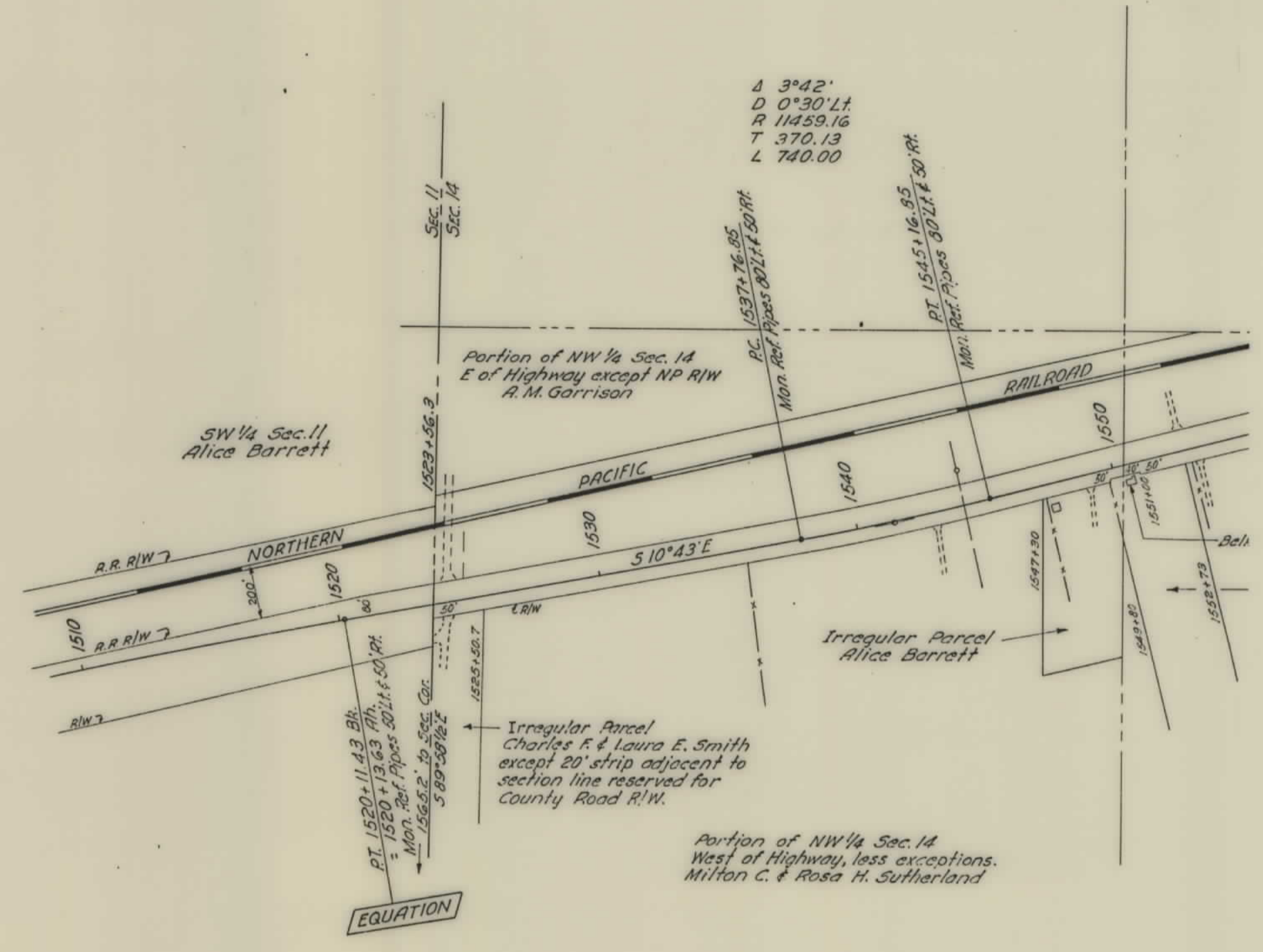
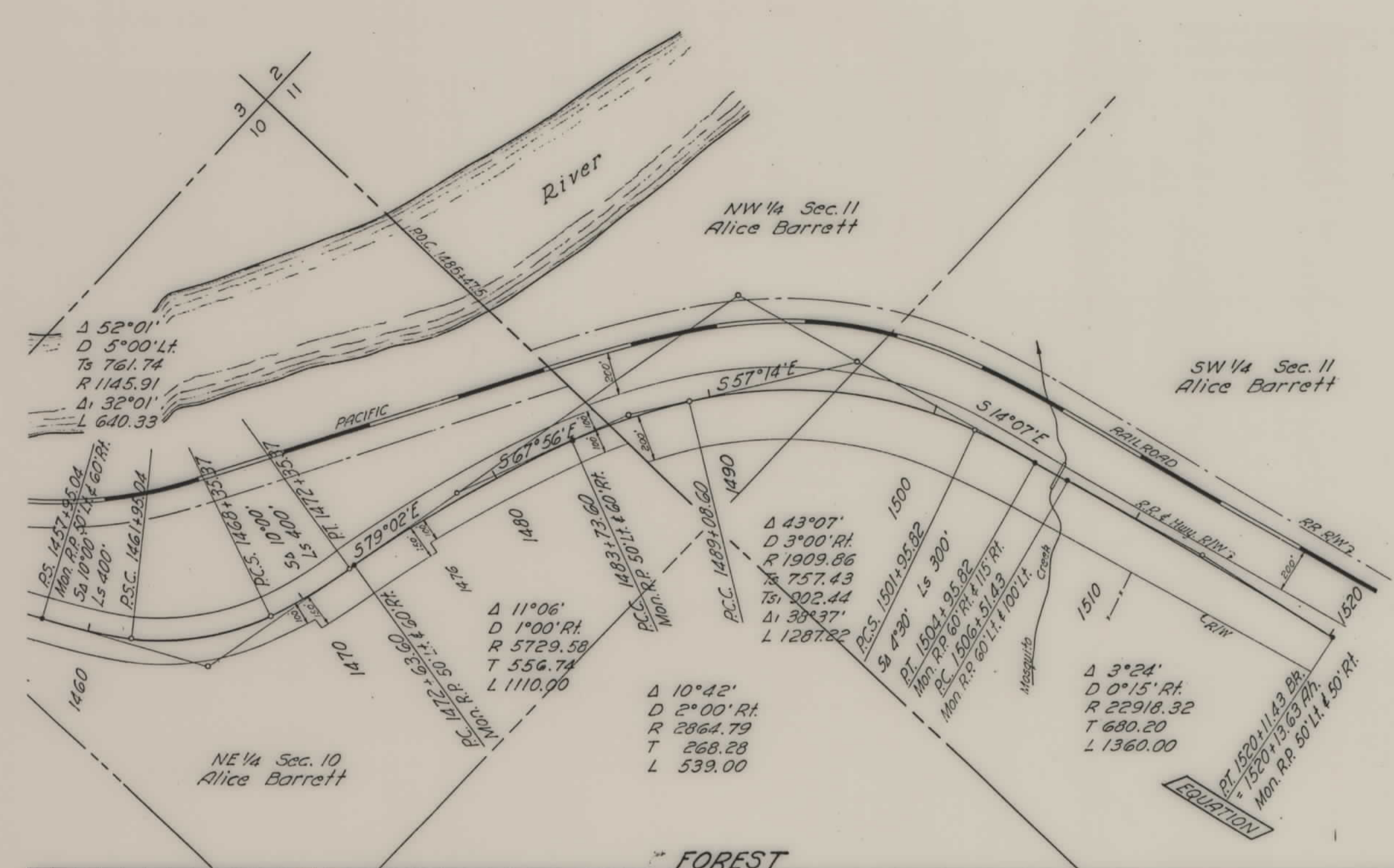


RES. ENGR. A.M. LEWIS  
 DRAWN BY R.F. VARNEY  
 CHECKED BY A.M. LEWIS  
 TRACED BY G.M. ROBERTSON  
 DEC. 1950.

MONTANA FOREST HIGHWAY PROJECT 6-D2, J4  
 GRADING 9.525 MILES  
 SURFACING 22.590 MILES

TYPICAL SECTION  
 CUSHION MATERIAL TREATMENT

PROJECT NO. - DESIGNATION	SHEET NO.	TOTAL SHEETS
FHP 6-D2, J4 6-D4, I3, J6, N1	2	6
CLARK FORK HIGHWAY		



**CLASSIFICATION CLEARING**

**DRAINAGE STRUCTURES**

**BENCH MARKS**  
CONSTRUCTION DATUM  
Same as U.S.G.S. 1944

**PROFILE**  
HORIZ. " = 400'  
VERT. " = 40'

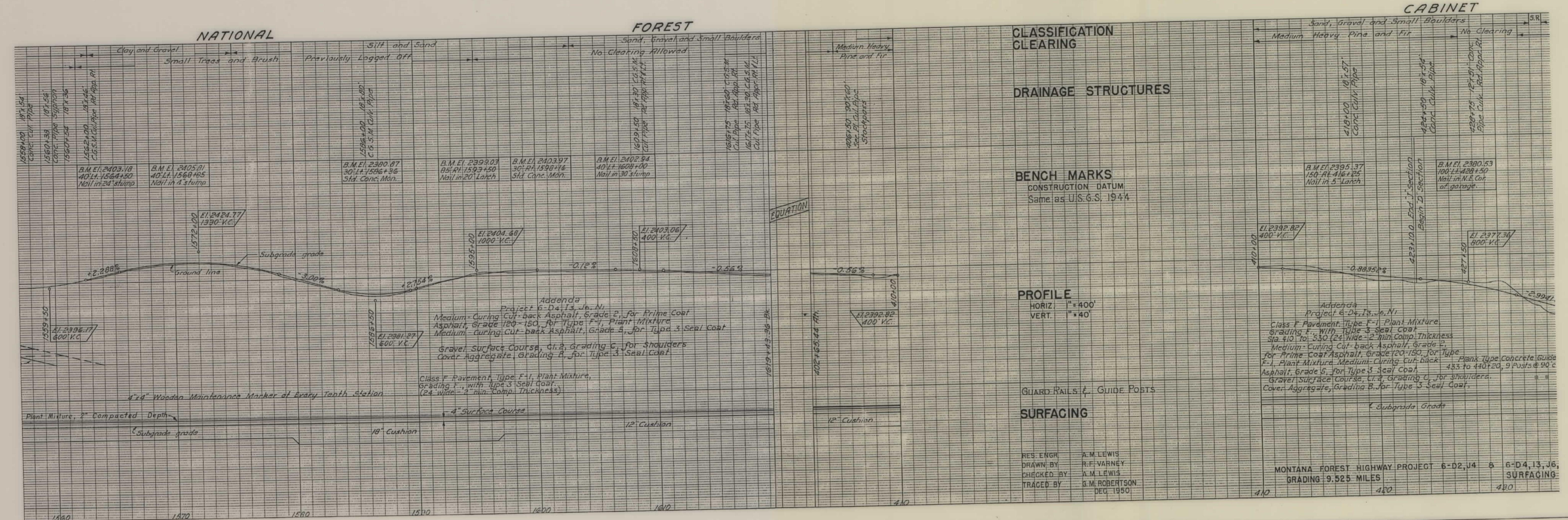
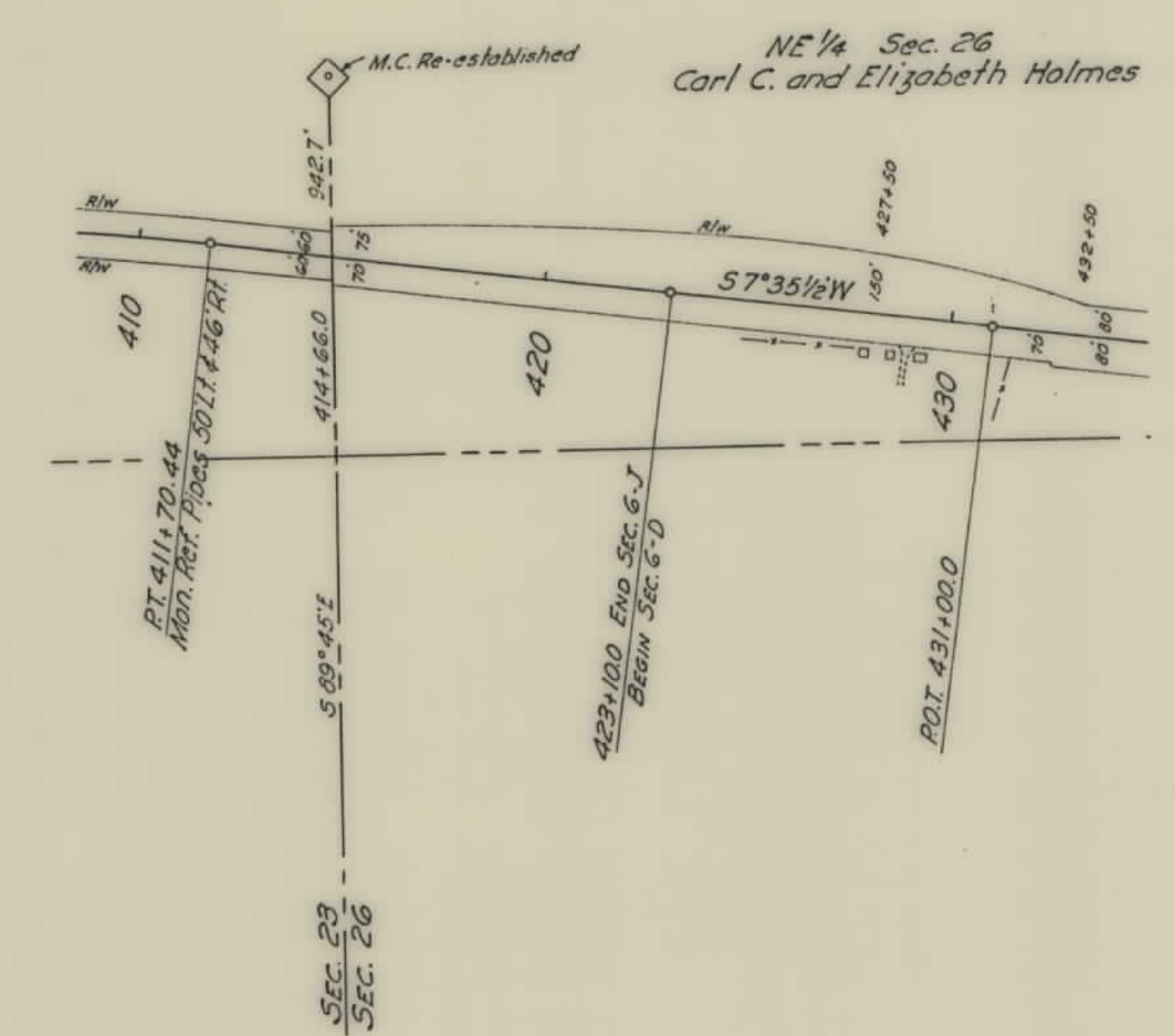
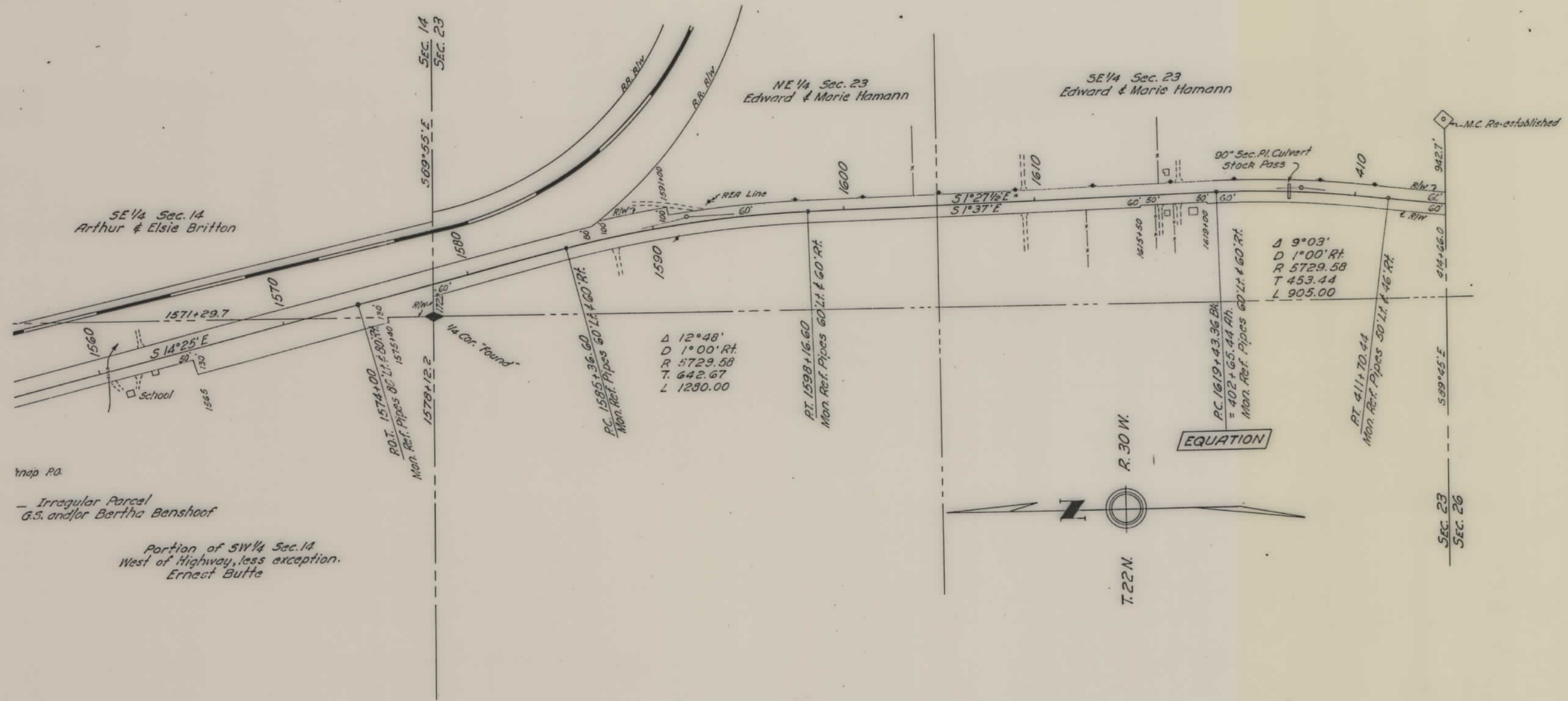
**GUARD RAILS & GUIDE POSTS**

**SURFACING**

RES. ENGR. A.M. LEWIS  
DRAWN BY R.F. VARNEY  
CHECKED BY A.M. LEWIS  
TRACED BY G.M. ROBERTSON  
DEC. 1950

MONTANA FOREST HIGHWAY PROJECT 6-D2, J4 & 6-D4, I3, J6, N1  
GRADING 9.525 MILES SURFACING 22.590 MILES

PROJECT NO. - DESIGNATION	SHEET NO.	TOTAL SHEETS
PHP 6-D2, J4 6-D4, I3, J6, N1	3	6
CLARK FORK HIGHWAY		



**CLASSIFICATION CLEARING**

**DRAINAGE STRUCTURES**

**BENCH MARKS**  
CONSTRUCTION DATUM  
Same as U.S.G.S. 1944

**PROFILE**  
HORIZ. 1" = 400'  
VERT. 1" = 40'

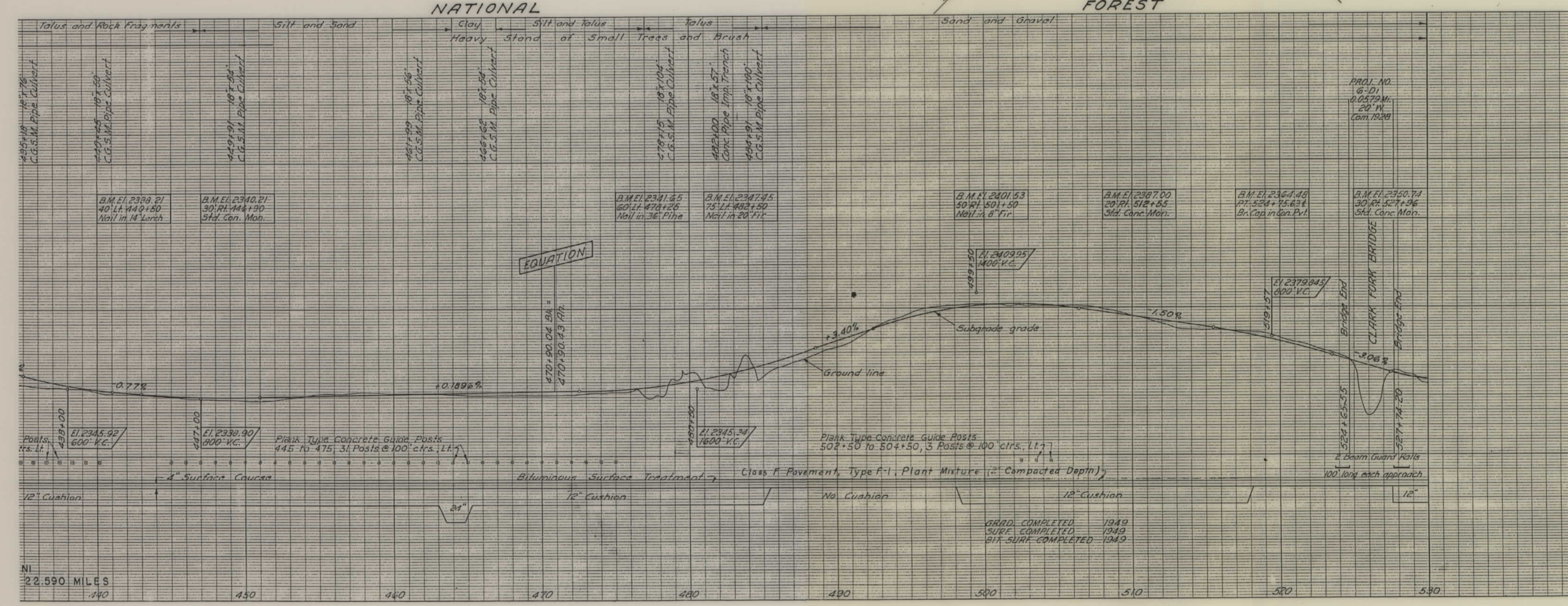
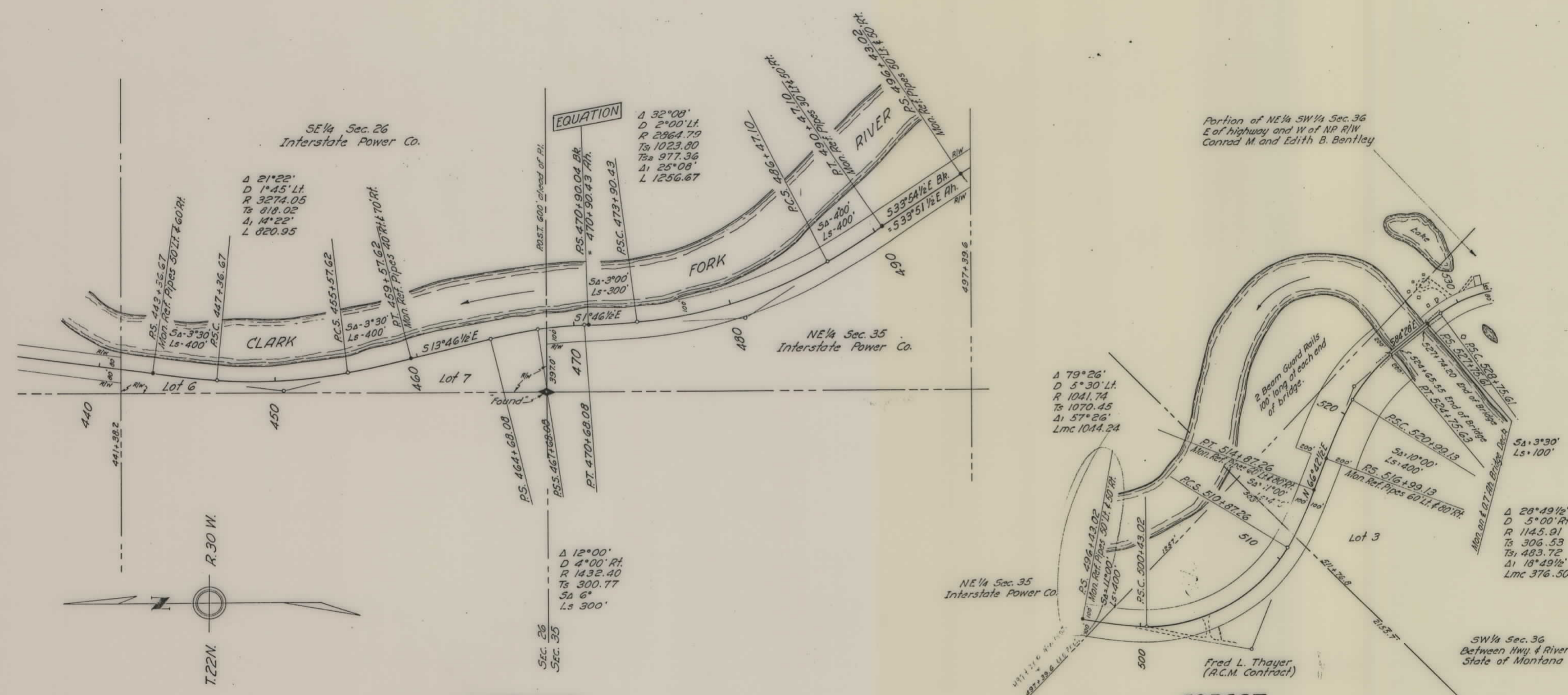
**GUARD RAILS & GUIDE POSTS**

**SURFACING**

MONTANA FOREST HIGHWAY PROJECT 6-D2, J4 6-D4, I3, J6, N1  
GRADING 9.525 MILES

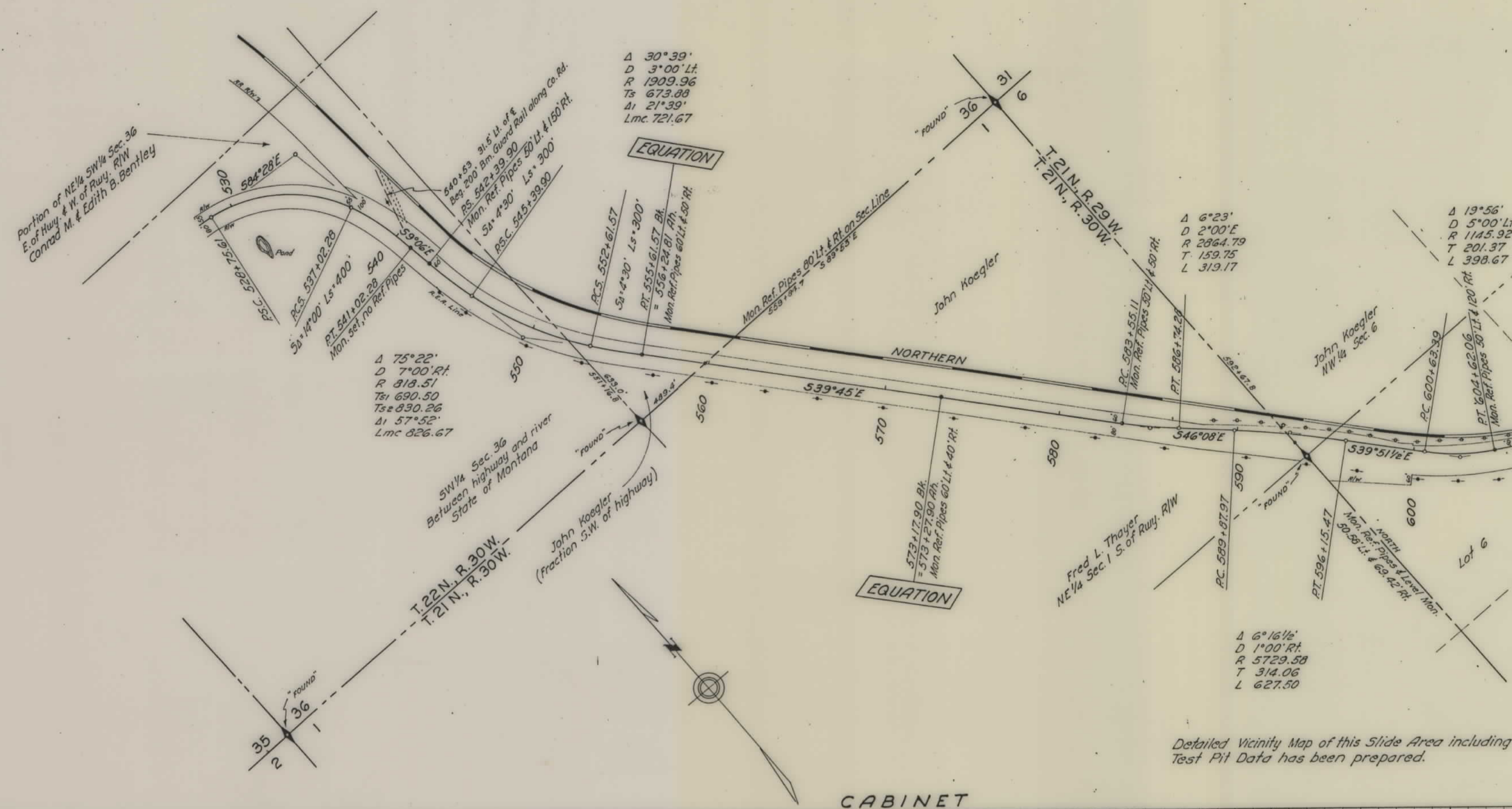
RES. ENGR. A.M. LEWIS  
DRAWN BY R.F. VARNEY  
CHECKED BY A.M. LEWIS  
TRACED BY G.M. ROBERTSON  
DEC. 1950

PROJECT NO. - DESIGNATION	SHEET NO.	TOTAL SHEETS
PHP 6-D2, J4 6-D4, I3, J6, N1	4	6
CLARK FORK HIGHWAY		

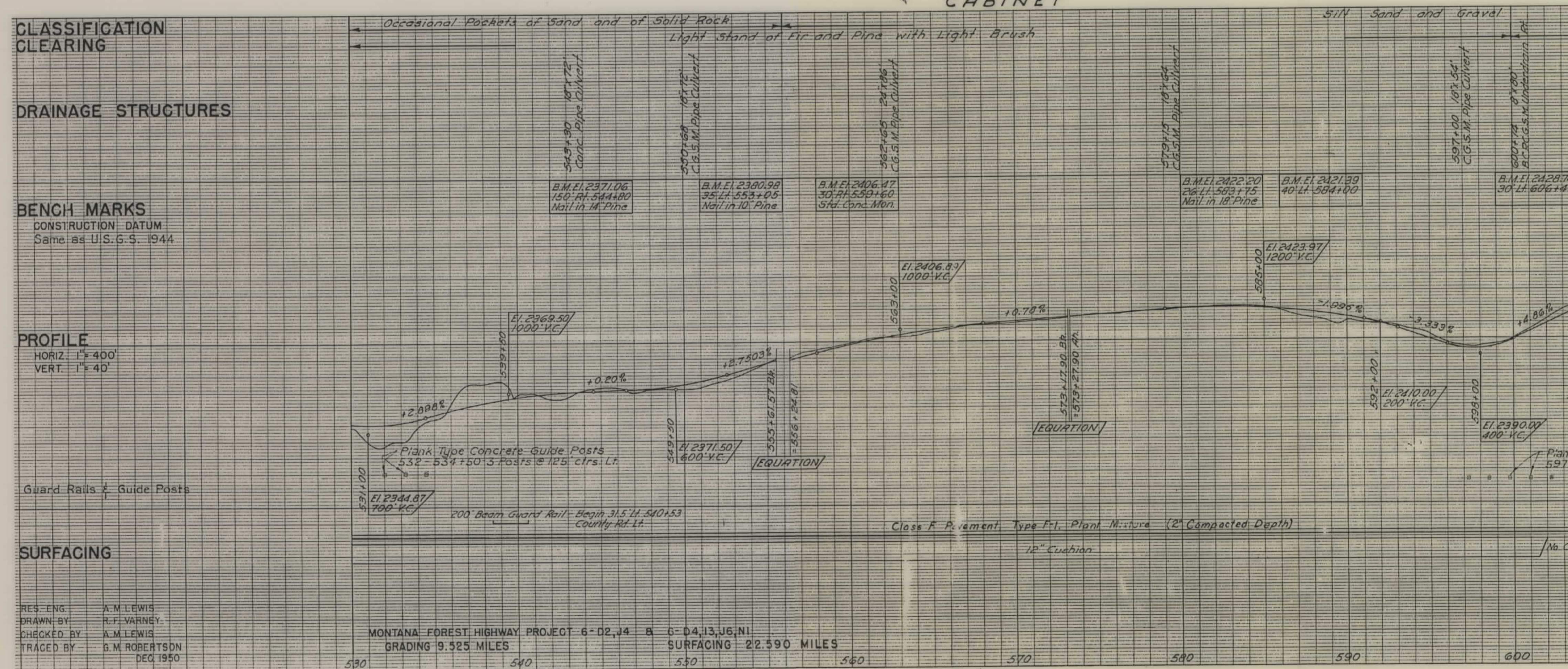


NI  
22.590 MILES  
440 450 460 470 480 490 500 510 520 530

PROJECT NO. - DESIGNATION	SHEET NO.	TOTAL SHEETS
FHP 6-D2, J4 6-D4, I3, J6, N1	5	6
CLARK FORK HIGHWAY		



Detailed Vicinity Map of this Slide Area including Test Pit Data has been prepared.



CLASSIFICATION	Occasional Pockets of Sand and of Solid Rock	Light Stand of Fir and Pine with Light Brush	Silt Sand and Gravel
CLEARING			
DRAINAGE STRUCTURES	530+00 18" x 12" Conc. Pipe Culvert	550+00 18" x 12" Conc. Pipe Culvert	597+00 18" x 12" Conc. Pipe Culvert
BENCH MARKS	B.M. E. 2371.06 150' AT 544+80 Nail in 14" Pine	B.M. E. 2380.98 35' AT 553+05 Nail in 10" Pine	B.M. E. 2422.90 26' AT 583+75 Nail in 18" Pine
PROFILE	HORIZ. 1" = 400' VERT. 1" = 40' Plank Type Concrete Guide Posts 532-534+50 3 Posts @ 125' cfs. Lt. 200' Beam Guard Rail - Begin 315' Lt. 540+53 County Rt. 1A.		
SURFACING	Close F. Cement Type F-1 Plant Mixture (2" Compacted Depth) 10" Cushion No. Cus.		
RES. ENG.	A. M. LEWIS		
DRAWN BY	R. F. VARNER		
CHECKED BY	A. M. LEWIS		
TRACED BY	G. M. ROBERTSON DEC 1950		

MONTANA FOREST HIGHWAY PROJECT 6-D2, J4 6-D4, I3, J6, N1  
 GRADING 9.525 MILES SURFACING 22.590 MILES

PROJECT NO. - DESIGNATION	SHEET NO.	TOTAL SHEETS
FHP 6-D2, J4 6-D4, I3, J6, N1	6	6
CLARK FORK HIGHWAY		

STA. 681+07.0 END PROJ. 6-D2, J4 & D4, I3, J6, N1  
 STA. 1152+18.0 BEG. PROJ. 6-M2

