

**PLANS
NOT
TO
SCALE**

OWNERSHIPS		
PARCEL	NAME	ADDRESS
1	TED J. & GEORGANN WATSON	"FOR NEGOTIATIONS ONLY - ACCESS CONTROL"

STATE	PROJECT NUMBER	SHEET NO.
MONTANA	F 11-1(6) 56	1 OF 3

LIVINGSTON - EAST
LIMITED ACCESS CONTROL
HIGHWAY



LIMITED ACCESS PROVISIONS - PER COMMISSION RESOLUTION PASSED -

1. PUBLIC APPROACHES - NO MORE THAN 2 PER MILE ON THE RIGHT FROM STA. 53+38 TO STA. 146+83.6
2. PRIVATE APPROACHES - NO MORE THAN 5 PER MILE ON THE RIGHT FROM STA. 53+38 TO STA. 146+83.6
3. FARM FIELD APPROACHES - FARM FIELD APPROACHES WILL BE ALLOWED BY TEMPORARY PERMIT.

DESIGNED		
DRAWN		
CHECKED		
REVISED		
REVISED		
REVISED		

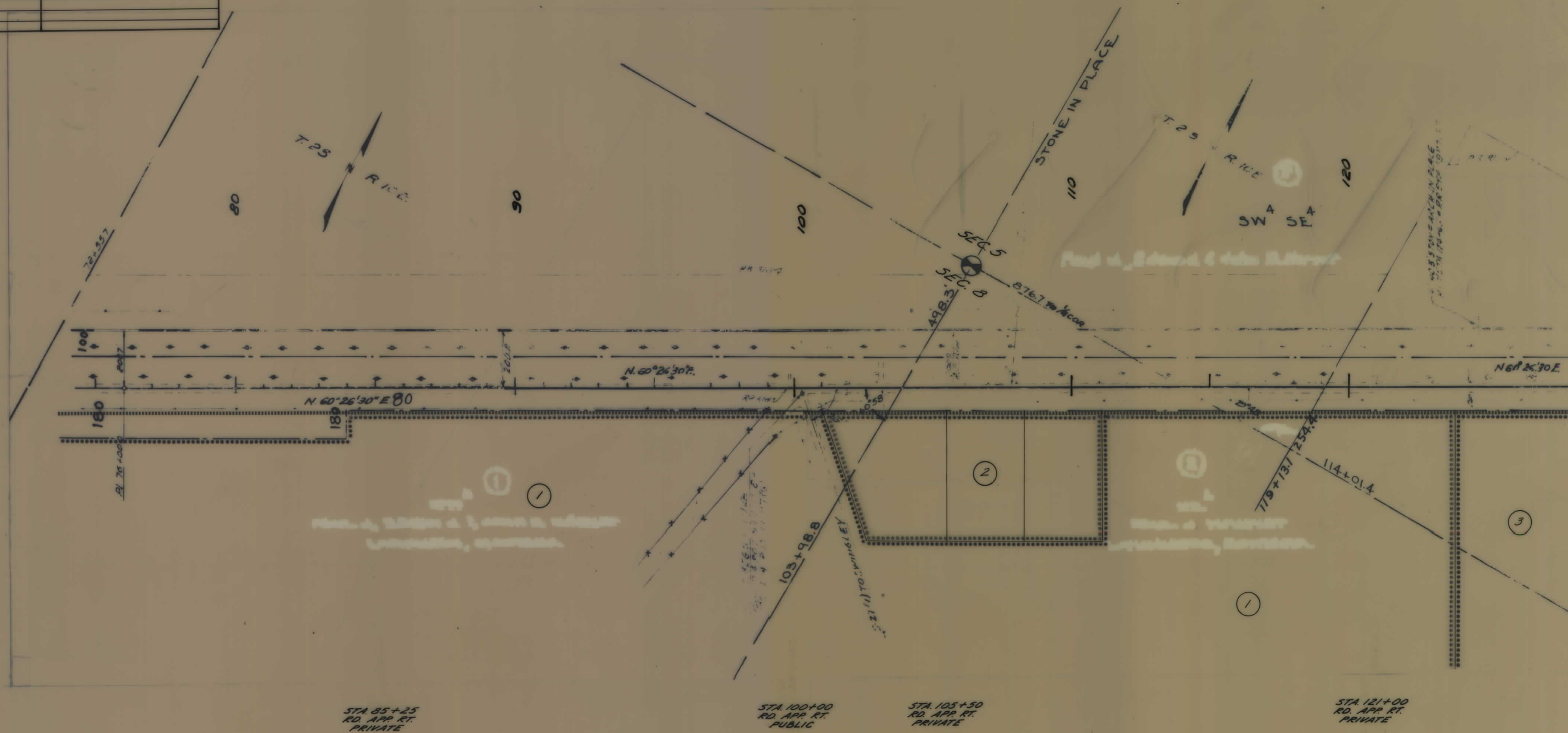
STATE OF MONTANA
DEPARTMENT OF HIGHWAYS

PARK COUNTY
SCALE 1" = 200'

STATE APPROVAL: 3-9-82

LIVINGSTON-EAST
LIMITED ACCESS CONTROL
HIGHWAY

OWNERSHIPS		
PARCEL	NAME	ADDRESS
2	JAMES O. & RACHEL A. MURRAY "FOR NEGOTIATIONS ONLY- ACCESS CONTROL"	
3	TED J. & GEORGANN WATSON	" "



STA. 85+25 RD. APP. RT. PRIVATE
 STA. 100+00 RD. APP. RT. PUBLIC
 STA. 105+50 RD. APP. RT. PRIVATE
 STA. 121+00 RD. APP. RT. PRIVATE

STATE OF MONTANA
DEPARTMENT OF HIGHWAYS

PARK COUNTY
SCALE 1" = 200'

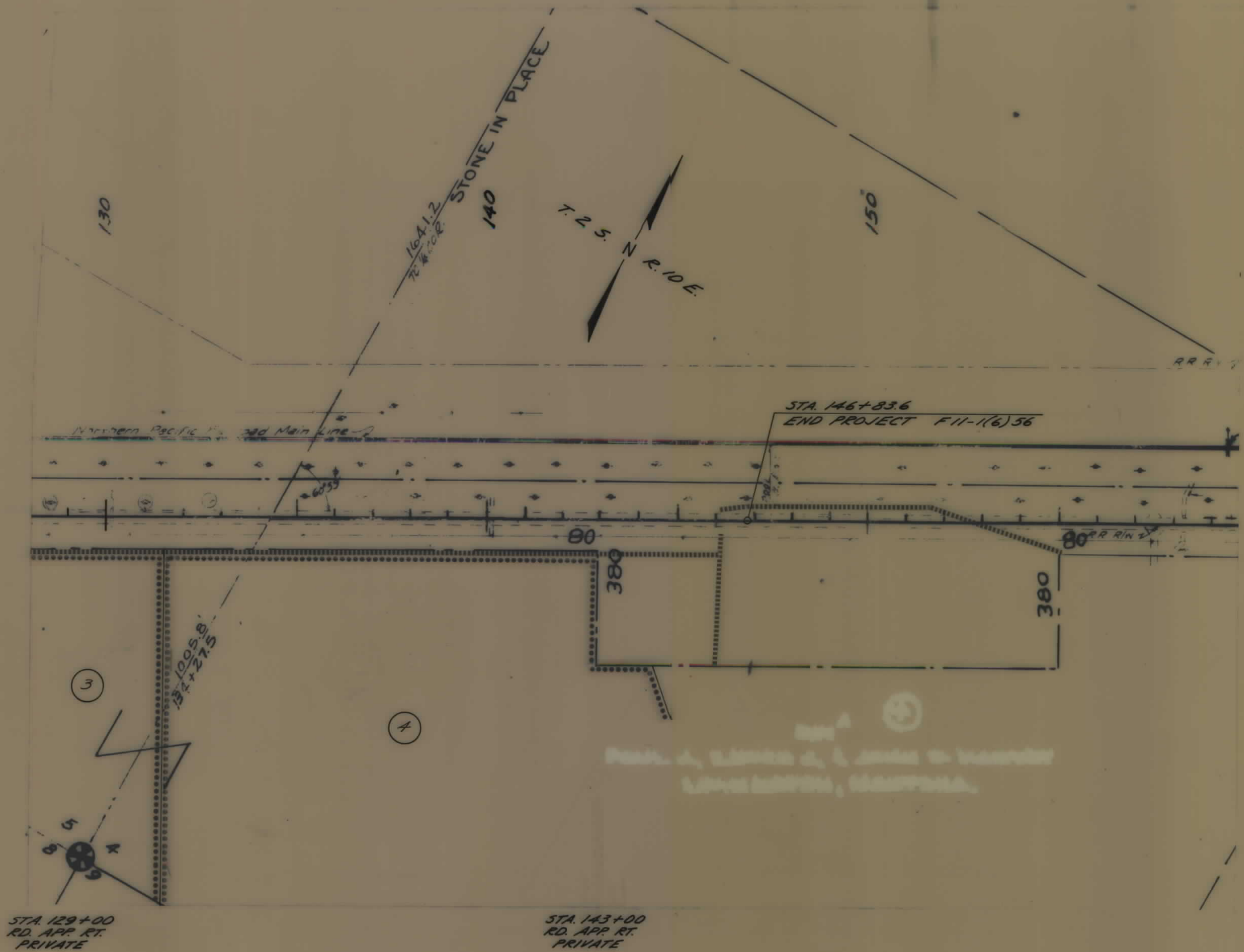
STATE APPROVAL: 3-9-82

DESIGNED	
DRAWN	
CHECKED	
REVISED	
REVISED	
REVISED	

OWNERSHIPS		
PARCEL	NAME	ADDRESS
3	TED J. & GEORGANN WATSON C/D DAVE JOHNSON	"FOR NEGOTIATIONS ONLY-ACCESS CONTROL"
4	TED J. & GEORGANN WATSON C/P GLEN M. & BETTY HARGROVE AND EARL WESLEY HARGROVE	" "

STATE	PROJECT NUMBER	SHEET NO.
MONTANA	F 11-1(6)56	3 OF 3

LIVINGSTON-EAST
LIMITED ACCESS CONTROL
HIGHWAY



DESIGNED		
DRAWN		
CHECKED		
REVISED		
REVISED		

STATE OF MONTANA
DEPARTMENT OF HIGHWAYS

PARK COUNTY
SCALE 1"=200'

STATE APPROVAL: 3-9-82

F 11-1(6)56 SHT 3 OF 3