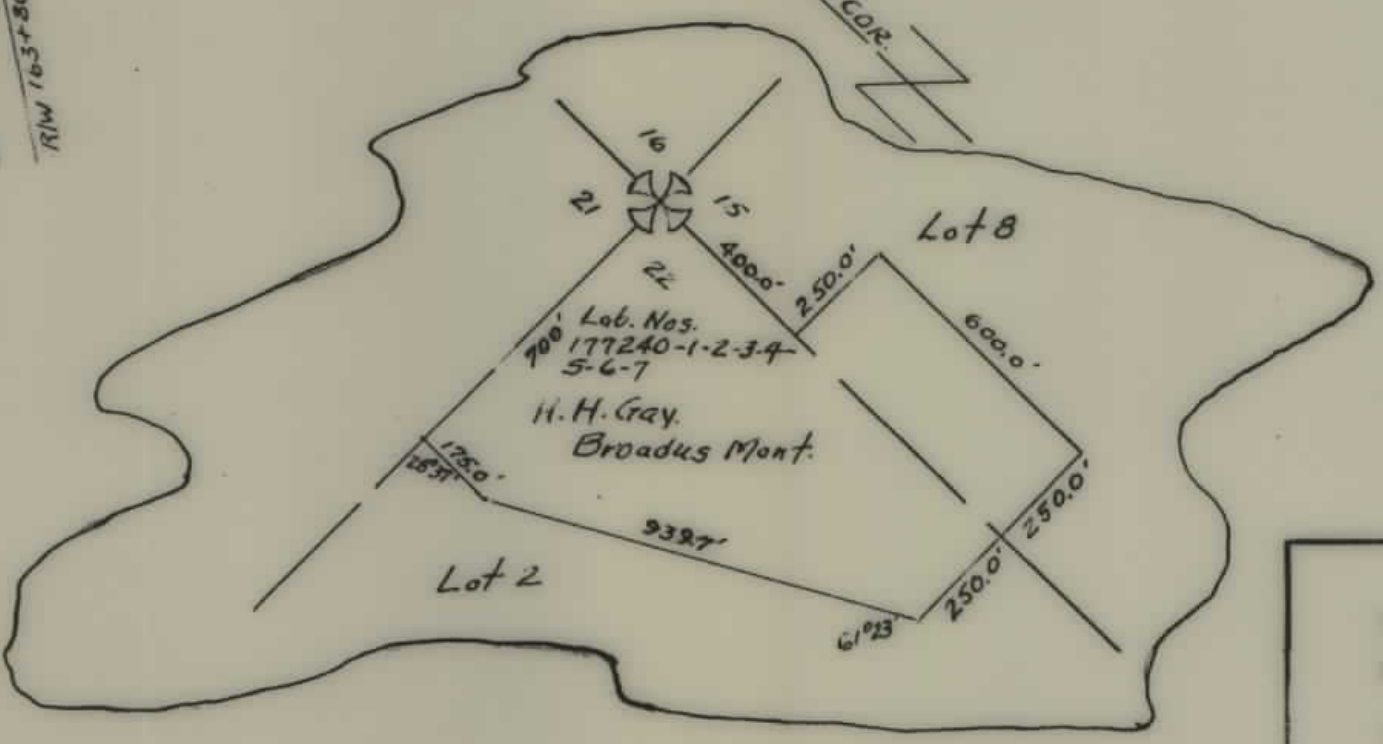
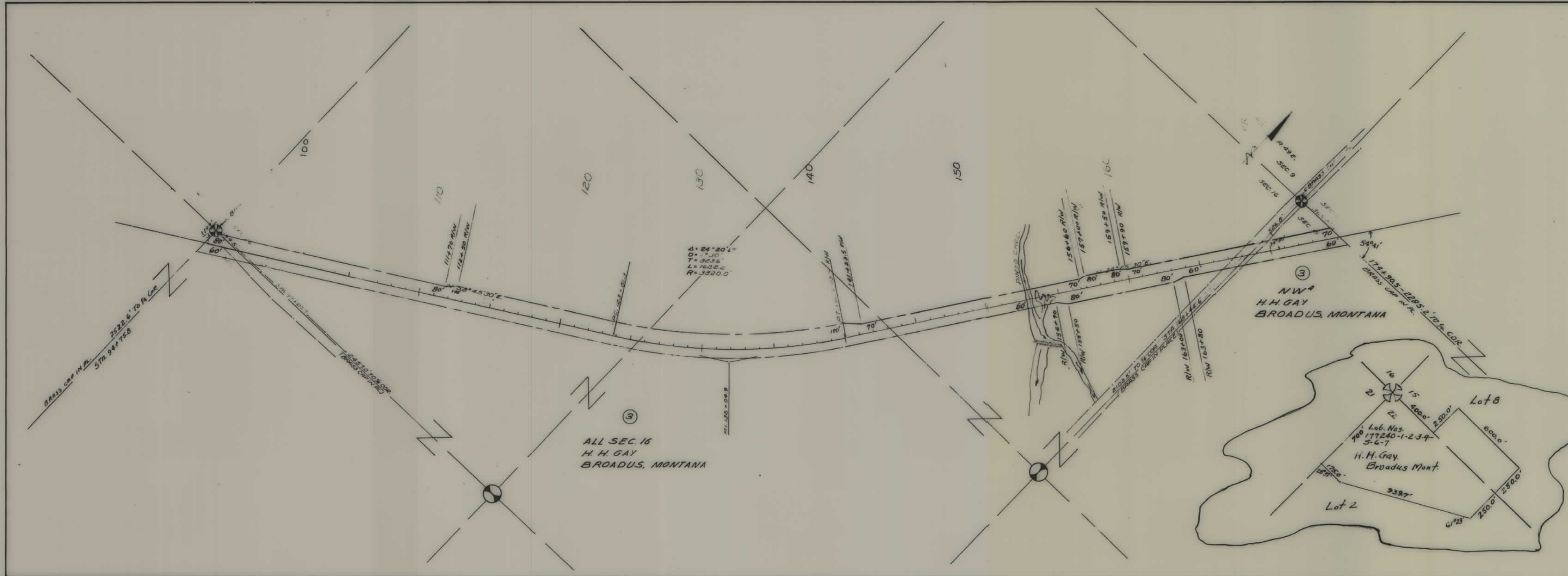


PLANS  
NOT  
TO  
SCALE



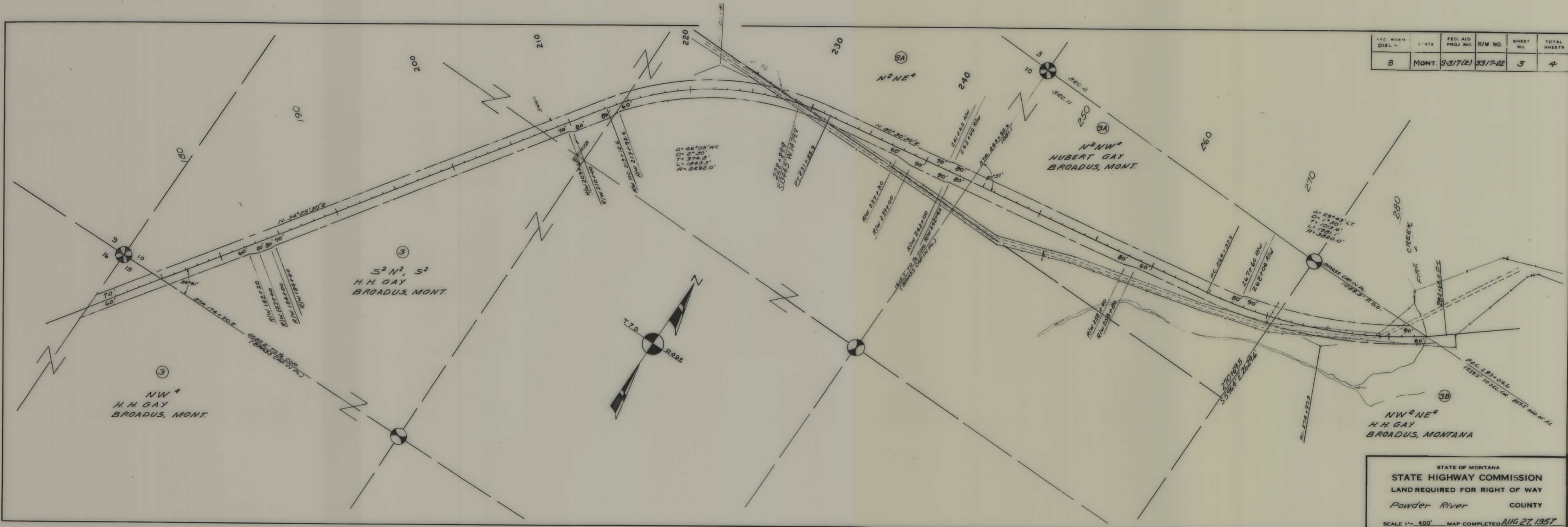
FED. ROAD DIST. NO.	STATE	FED. AID PROJ. NO.	R/W NO.	SHEET NO.	TOTAL SHEETS
8	MONT.	S-317(2)	3317-02	2	4



ALL SEC. 16  
 H. H. GAY  
 BROADUS, MONTANA

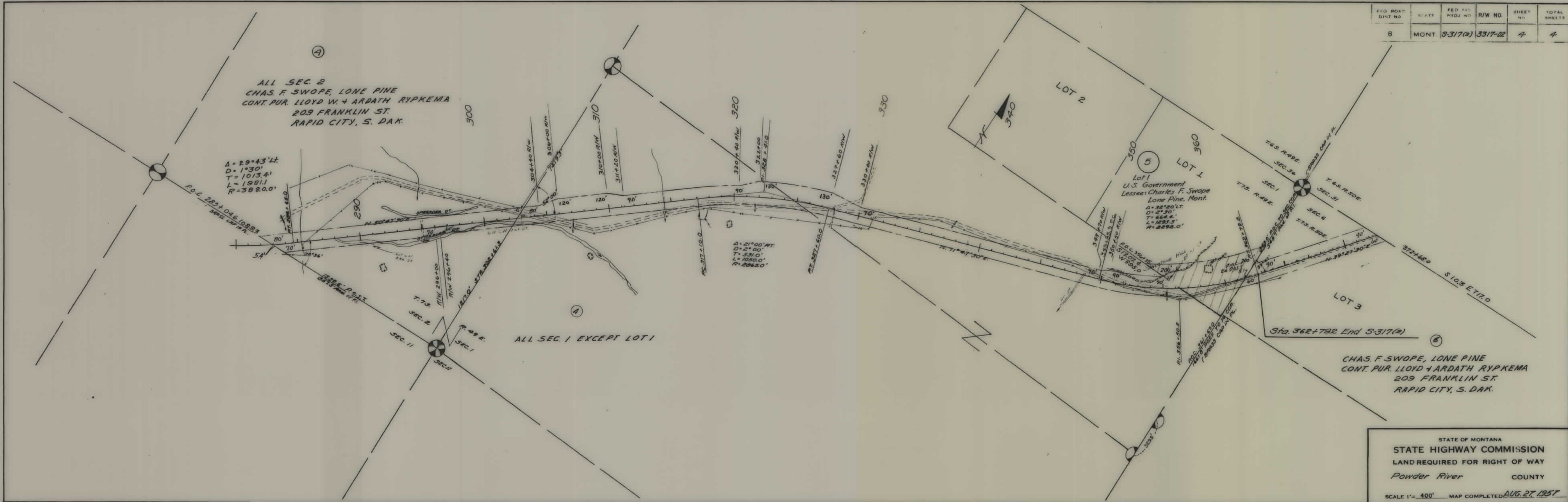
STATE OF MONTANA  
 STATE HIGHWAY COMMISSION  
 LAND REQUIRED FOR RIGHT OF WAY  
 Powder River COUNTY  
 SCALE 1" = 400' MAP COMPLETED AUG. 27, 1957

FED. ROAD DIST. NO.	STATE	FED. AID PROJ. NO.	R/W NO.	SHEET NO.	TOTAL SHEETS
8	MONT.	S-317(2)	3317-02	3	4



STATE OF MONTANA  
 STATE HIGHWAY COMMISSION  
 LAND REQUIRED FOR RIGHT OF WAY  
 Powder River COUNTY  
 SCALE 1" = 400' MAP COMPLETED AUG 27, 1957

FED. ROAD DIST. NO.	STATE	FED. AID PROJ. NO.	R/W NO.	SHEET NO.	TOTAL SHEETS
8	MONT.	S-317(a)	3317-02	4	4



STATE OF MONTANA  
**STATE HIGHWAY COMMISSION**  
 LAND REQUIRED FOR RIGHT OF WAY  
 Powder River COUNTY  
 SCALE 1" = 400' MAP COMPLETED AUG. 27, 1957