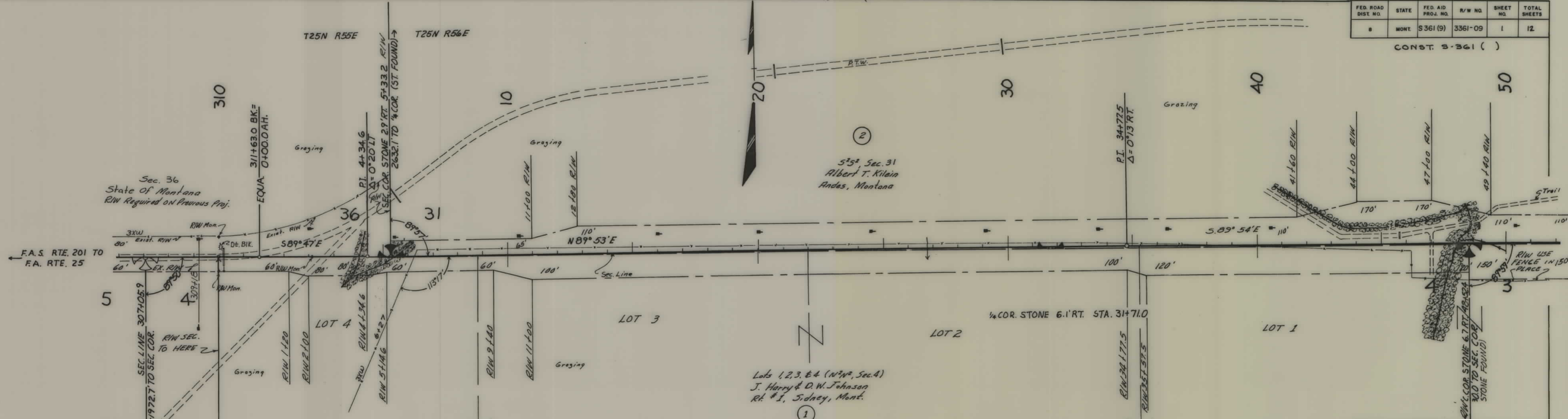


PLANS
NOT
TO
SCALE

FED. ROAD DIST. NO.	STATE	FED. AID PROJ. NO.	R/W NO.	SHEET NO.	TOTAL SHEETS
8	MONT.	S361 (9)	3361-09	1	12

CONST. S-361 ()



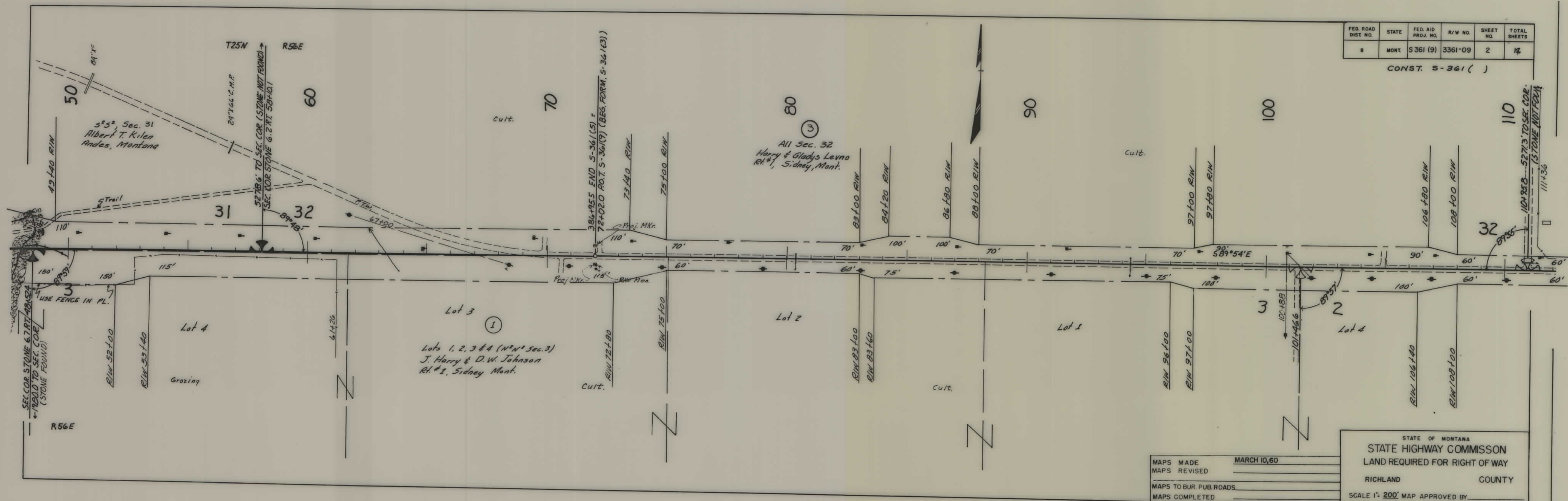
STA. 309+99.1 P.O.T. BEG S-361 (9)
 STA. 309+99.1 P.C. ON S-361 (5)
 N. 5.0' - W. 69.71'

MAPS MADE MARCH 10, 60
 MAPS REVISED _____
 MAPS TO BUR. PUB. ROADS _____
 MAPS COMPLETED _____

STATE OF MONTANA
 STATE HIGHWAY COMMISSION
 LAND REQUIRED FOR RIGHT OF WAY
 RICHLAND COUNTY
 SCALE 1" = 200' MAP APPROVED BY _____

FED. ROAD DIST. NO.	STATE	FED. AID PROJ. NO.	R/W NO.	SHEET NO.	TOTAL SHEETS
8	MONT.	S 361 (9)	3361-09	2	14

CONST. S-361 ()

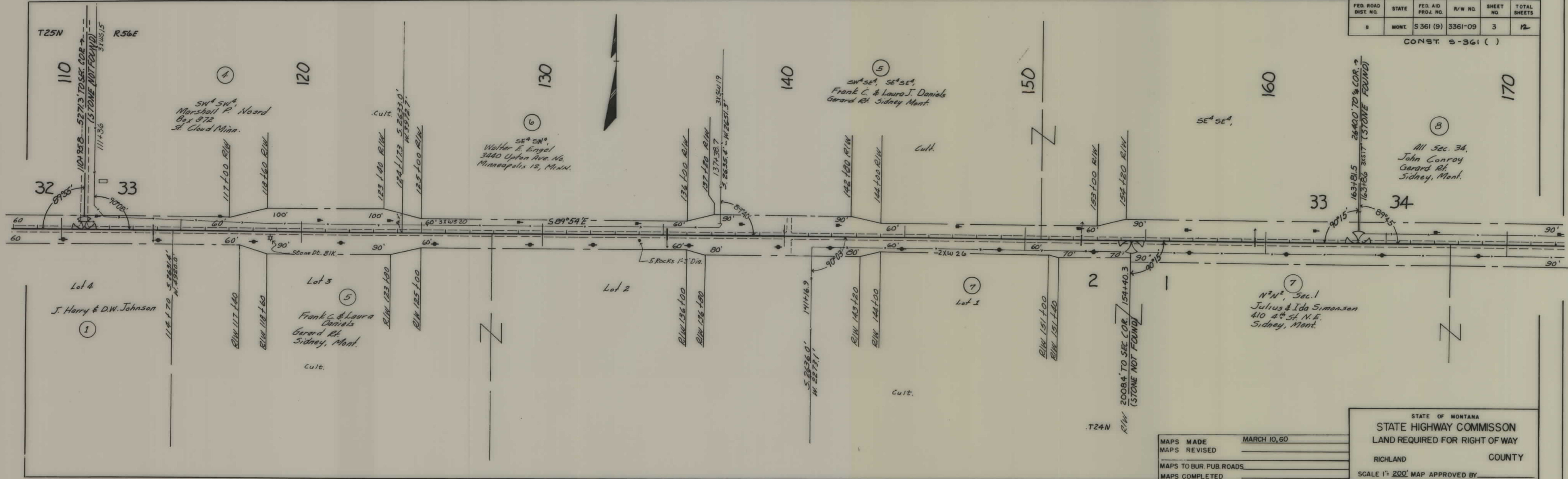


MAPS MADE MARCH 10, 60
 MAPS REVISED _____
 MAPS TO BUR. PUB. ROADS _____
 MAPS COMPLETED _____

STATE OF MONTANA
 STATE HIGHWAY COMMISSION
 LAND REQUIRED FOR RIGHT OF WAY
 RICHLAND COUNTY
 SCALE 1" = 200' MAP APPROVED BY _____

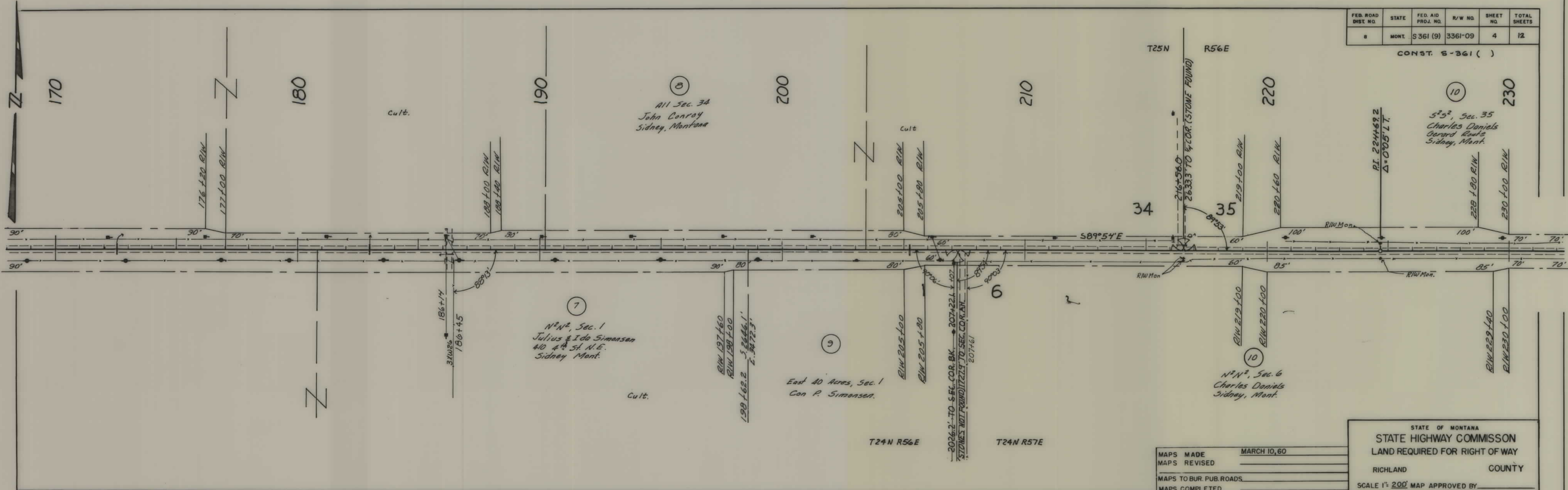
FED. ROAD DIST. NO.	STATE	FED. AID PROJ. NO.	R/W NO.	SHEET NO.	TOTAL SHEETS
8	MONT.	S 361 (9)	3361-09	3	12

CONST. S-361 ()



MAPS MADE	MARCH 10, 60
MAPS REVISED	
MAPS TO BUR. PUB. ROADS	
MAPS COMPLETED	

STATE OF MONTANA
 STATE HIGHWAY COMMISSION
 LAND REQUIRED FOR RIGHT OF WAY
 RICHLAND COUNTY
 SCALE 1" = 200' MAP APPROVED BY _____

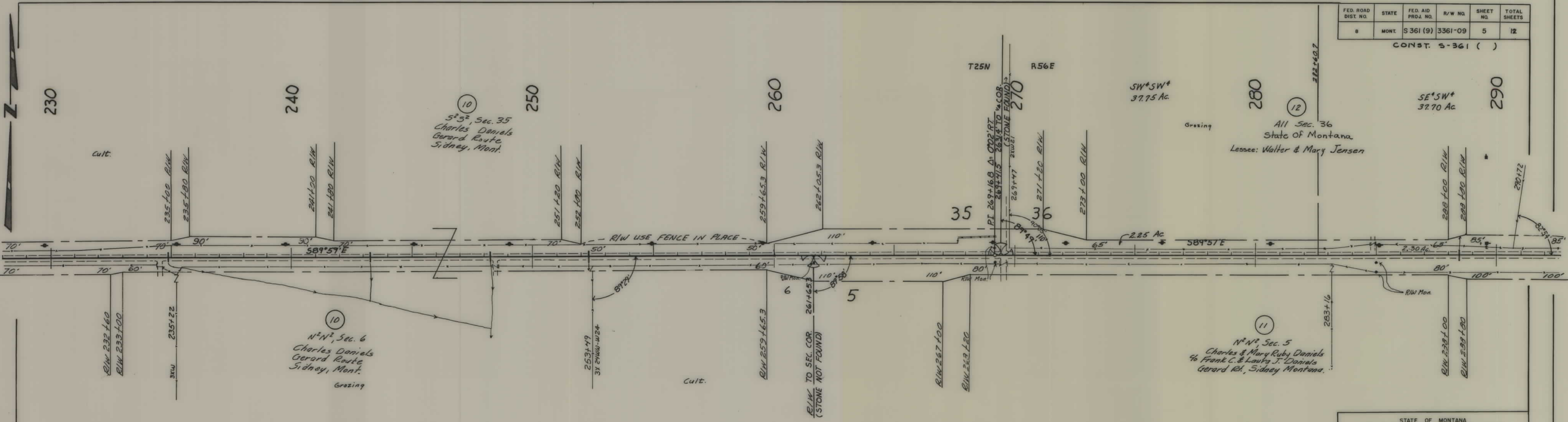


FED. ROAD DIST. NO.	STATE	FED. AID PROJ. NO.	R/W NO.	SHEET NO.	TOTAL SHEETS
8	MONT.	S361 (9)	3361-09	4	12

CONST. S-361 ()

MAPS MADE	MARCH 10, 60
MAPS REVISED	
MAPS TO BUR. PUB. ROADS	
MAPS COMPLETED	

STATE OF MONTANA
 STATE HIGHWAY COMMISSION
 LAND REQUIRED FOR RIGHT OF WAY
 RICHLAND COUNTY
 SCALE 1" = 200' MAP APPROVED BY _____



FED. ROAD DIST. NO.	STATE	FED. AID PROJ. NO.	R/W NO.	SHEET NO.	TOTAL SHEETS
8	MONT.	S 361 (9)	3361-09	5	12

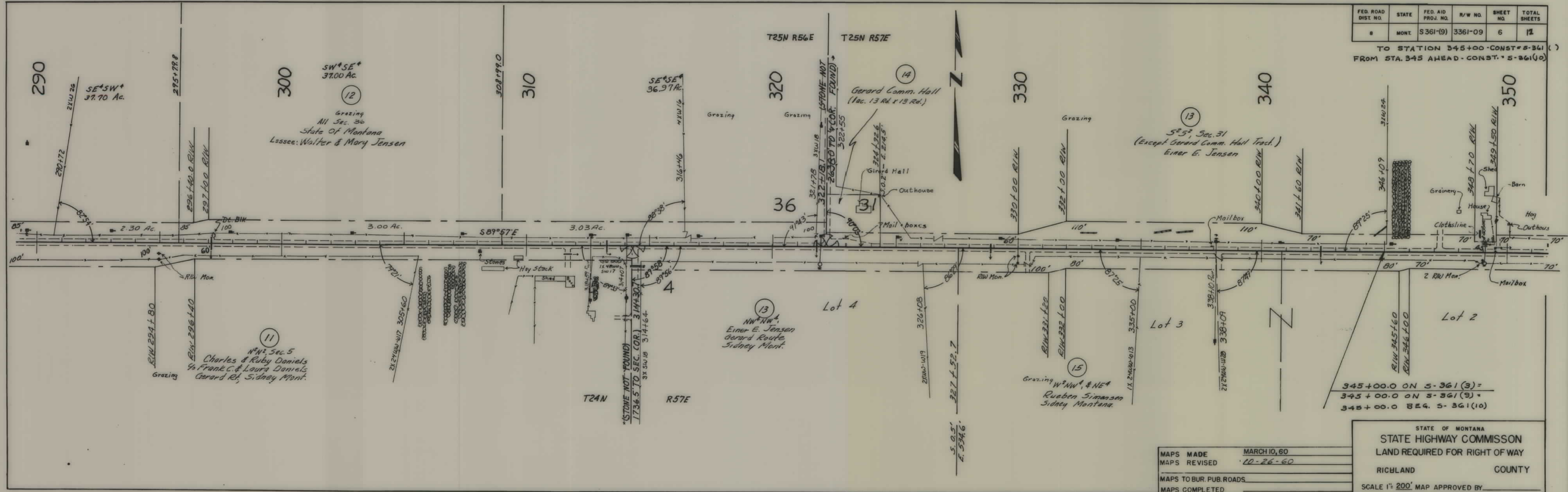
CONST. S-361 ()

DESCRIPTIONS WRITTEN BY _____
 DESCRIPTIONS CHECKED BY _____
 MAPS COMPLETED BY _____
 MAPS TO BUR. PUB. ROADS _____
 MAPS TO CONSTRUCTION _____

STATE OF MONTANA
STATE HIGHWAY COMMISSION
 LAND REQUIRED FOR RIGHT OF WAY
 RICHLAND COUNTY
 SCALE 1" = 200' MAP APPROVED BY _____

FED. ROAD DIST. NO.	STATE	FED. AID PROJ. NO.	R/W NO.	SHEET NO.	TOTAL SHEETS
8	MONT.	S361(9)	3361-09	6	12

TO STATION 345+00 CONST. S-361 ()
 FROM STA. 345 AHEAD CONST. S-361 ()

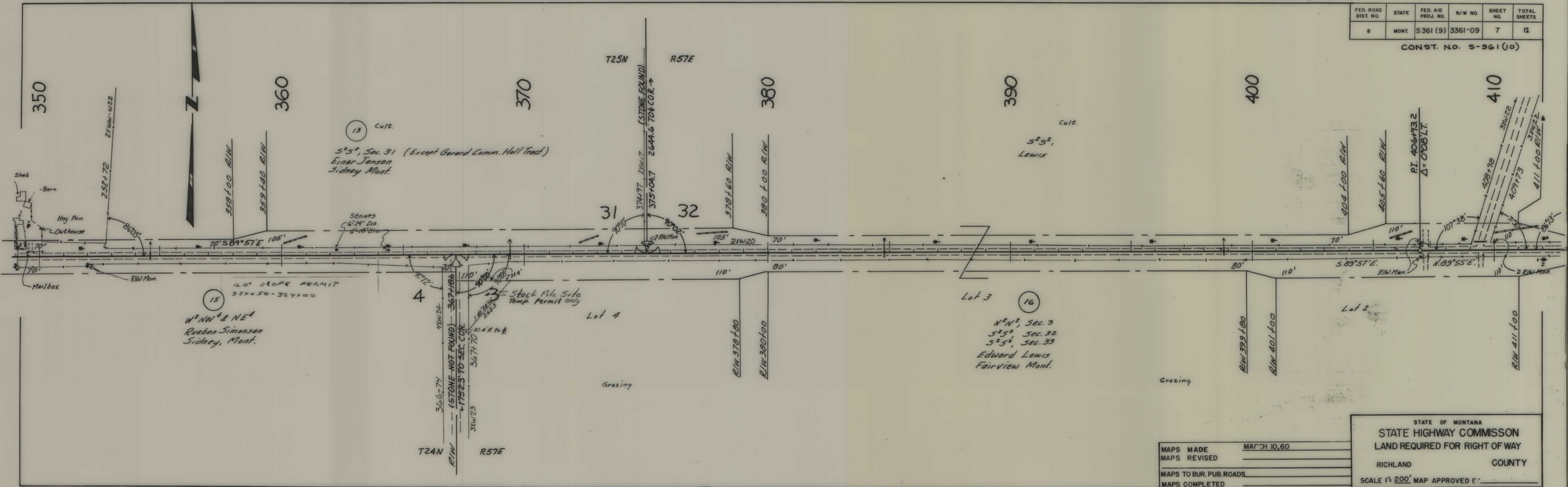


MAPS MADE	MARCH 10, 60
MAPS REVISED	10-26-60
MAPS TO BUR. PUB. ROADS	
MAPS COMPLETED	

STATE OF MONTANA
 STATE HIGHWAY COMMISSION
 LAND REQUIRED FOR RIGHT OF WAY
 RICHLAND COUNTY
 SCALE 1" = 200' MAP APPROVED BY _____

FED. ROAD DIST. NO.	STATE	FED. AID PROJ. NO.	R/W NO.	SHEET NO.	TOTAL SHEETS
8	MONT.	S 361 (9)	3361-09	7	12

CONST. NO. S-361 (10)



15
W²NW⁴ & NE⁴
Rueben Simonsen
Sidney, Mont.

13 Cult.
S²S², Sec. 31 (Except Garard Comm. Hall Tract.)
Einar Jensen
Sidney Mont.

120' SLOPE PERMIT
352+50-364+00

4
T24N R1W
366+74
(STONE NOT FOUND)
367+186
+1752.3 TO SEC. COR.
31.4 R to E
367+70
31W23

5 Stock Pile Site
Temp. Permit only

Lot 4

Grazing

T25N R57E

31 32

R1W 378+80
R1W 380+00

380

Lot 3
16
N²N², Sec. 3
S²S², Sec. 32
S²S², Sec. 33
Edward Lewis
Fairview Mont.

390

Cult.
S²S²,
Lewis

Grazing

R1W 399+80
R1W 401+00

400

Lot 2

PI. 406+93.2
Δ = 0°08' LT.

5.89°57'E

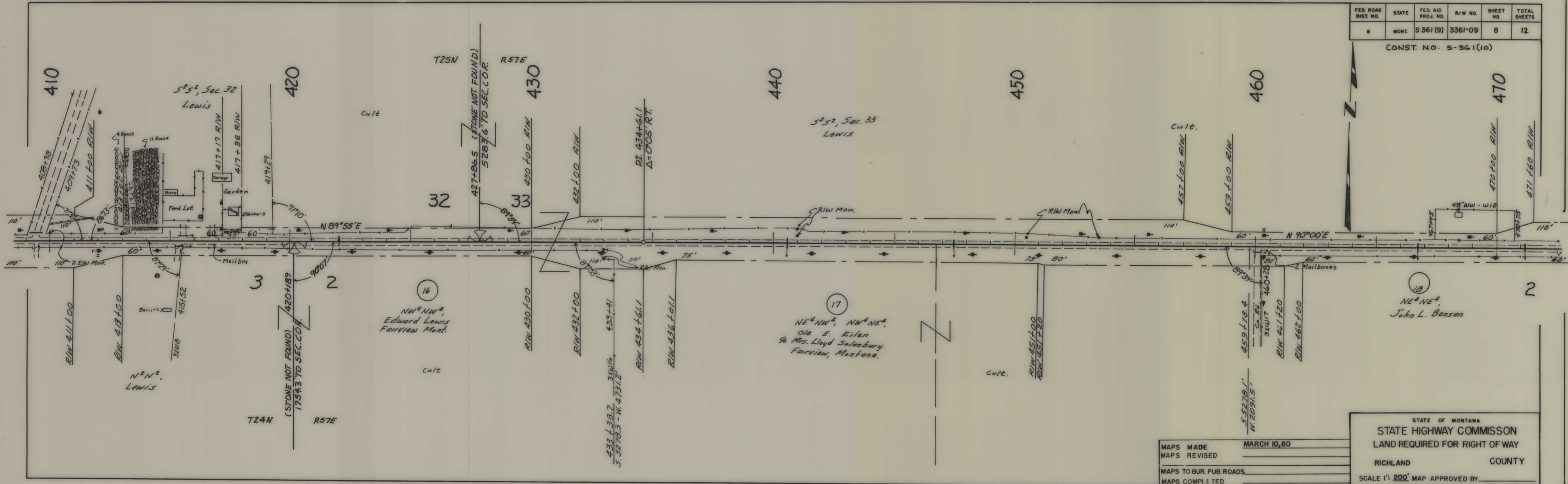
STATE OF MONTANA
STATE HIGHWAY COMMISSION
LAND REQUIRED FOR RIGHT OF WAY
RICHLAND COUNTY

MAPS MADE	MARCH 10, 60
MAPS REVISED	
MAPS TO BUR. PUB. ROADS	
MAPS COMPLETED	

SCALE 1" = 200' MAP APPROVED E'

FED. ROAD DIST. NO.	STATE	FED. AID PROJ. NO.	R/W NO.	SHEET NO.	TOTAL SHEETS
8	MONT.	S 361 (9)	3361-09	8	12

CONST. NO. S-361(10)

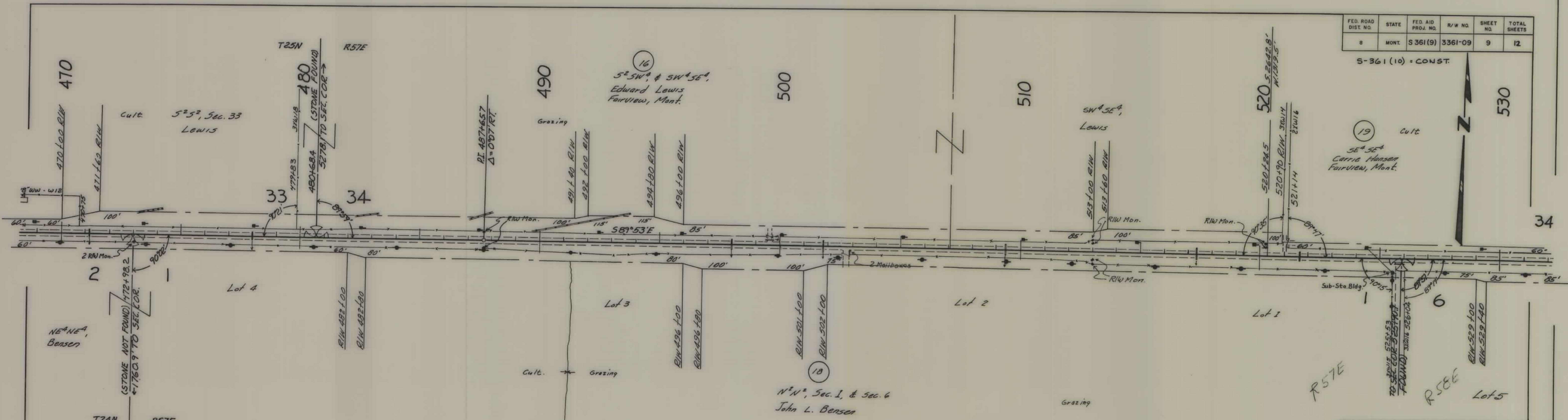


MAPS MADE	MARCH 10, 60
MAPS REVISED	
MAPS TO BUR. PUB. ROADS	
MAPS COMPLETED	

STATE OF MONTANA
 STATE HIGHWAY COMMISSION
 LAND REQUIRED FOR RIGHT OF WAY
 RICHLAND COUNTY
 SCALE 1" = 200' MAP APPROVED BY _____

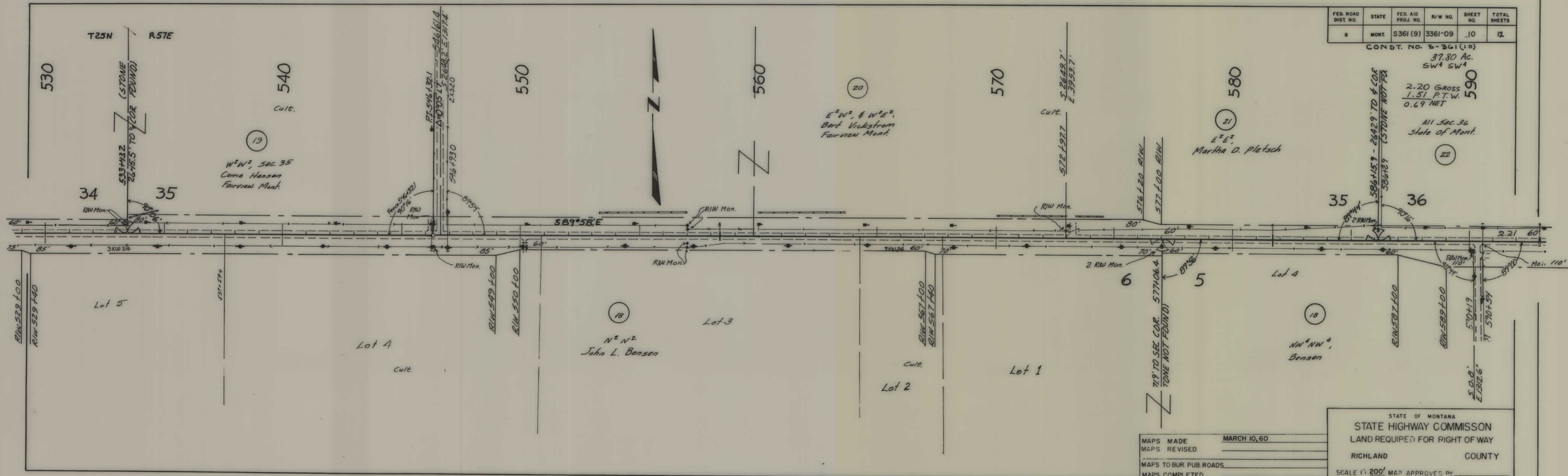
FED. ROAD DIST. NO.	STATE	FED. AID PROJ. NO.	R/W NO.	SHEET NO.	TOTAL SHEETS
8	MONT.	S 361(9)	3361-09	9	12

S-361(10) - CONST.



MAPS MADE MARCH 10, 60
 MAPS REVISED _____
 MAPS TO BUR. PUB. ROADS _____
 MAPS COMPLETED _____

STATE OF MONTANA
 STATE HIGHWAY COMMISSION
 LAND REQUIRED FOR RIGHT OF WAY
 RICHLAND COUNTY
 SCALE 1" = 200' MAP APPROVED BY _____



FED. ROAD DIST. NO.	STATE	FED. AID PROJ. NO.	R/W NO.	SHEET NO.	TOTAL SHEETS
8	MONT.	S361 (9)	3361-09	10	12

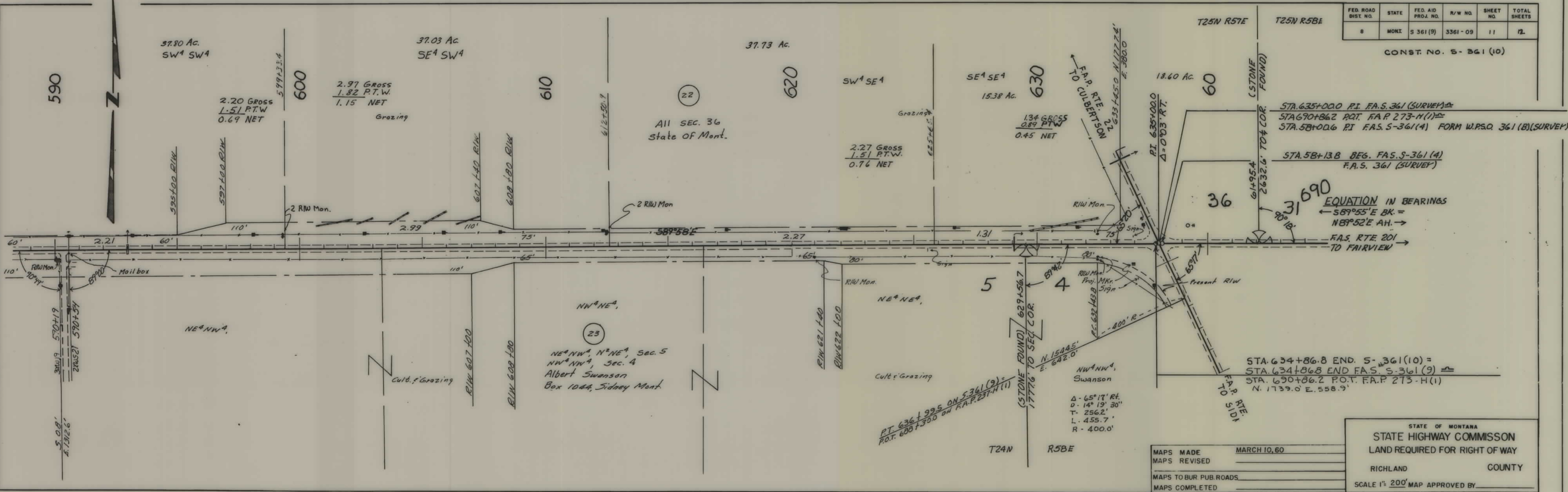
CONST. NO. S-361 (10)
 37.80 AC.
 SW 1/4 SW 1/4
 2.20 GROSS
 1.51 P.T.W.
 0.69 NET

MAPS MADE MARCH 10, 60
 MAPS REVISED _____
 MAPS TO BUR. PUB. ROADS _____
 MAPS COMPLETED _____

STATE OF MONTANA
 STATE HIGHWAY COMMISSION
 LAND REQUIRED FOR RIGHT OF WAY
 RICHLAND COUNTY
 SCALE 1" = 200' MAP APPROVED BY _____

FED. ROAD DIST. NO.	STATE	FED. AID PROJ. NO.	R/W NO.	SHEET NO.	TOTAL SHEETS
8	MONT.	S 361 (9)	3361-09	11	12

CONST. NO. S-361 (10)

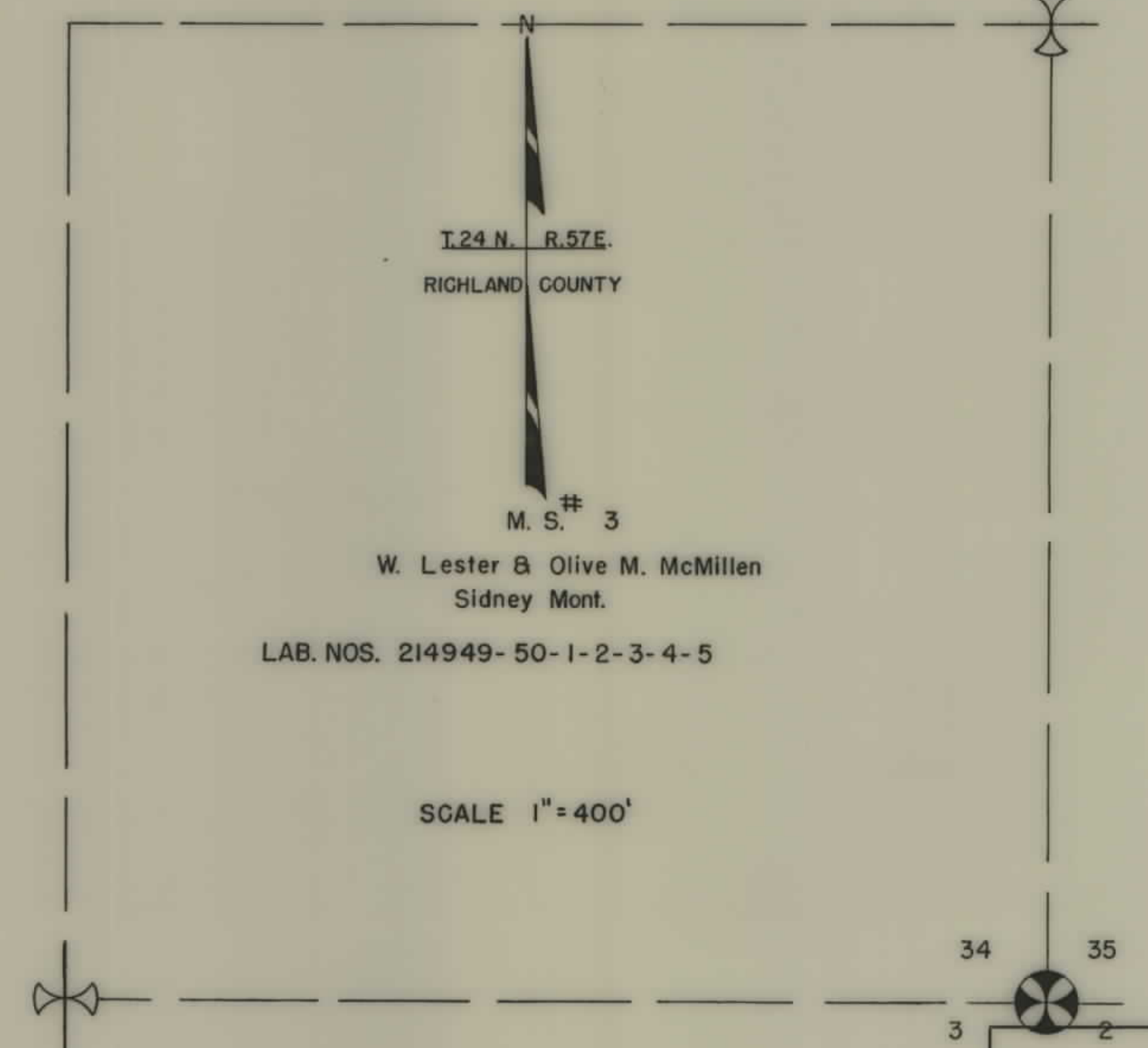
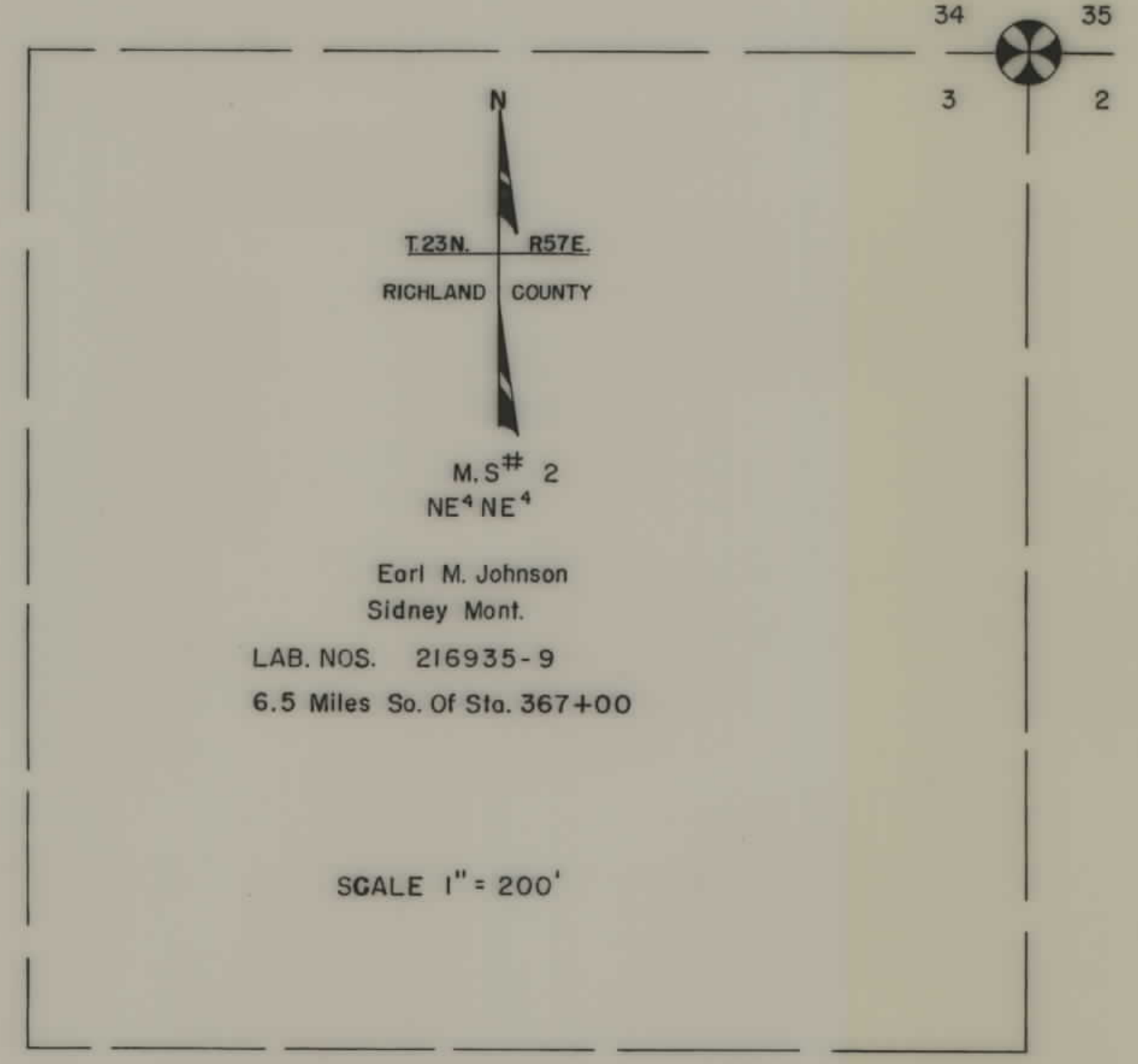
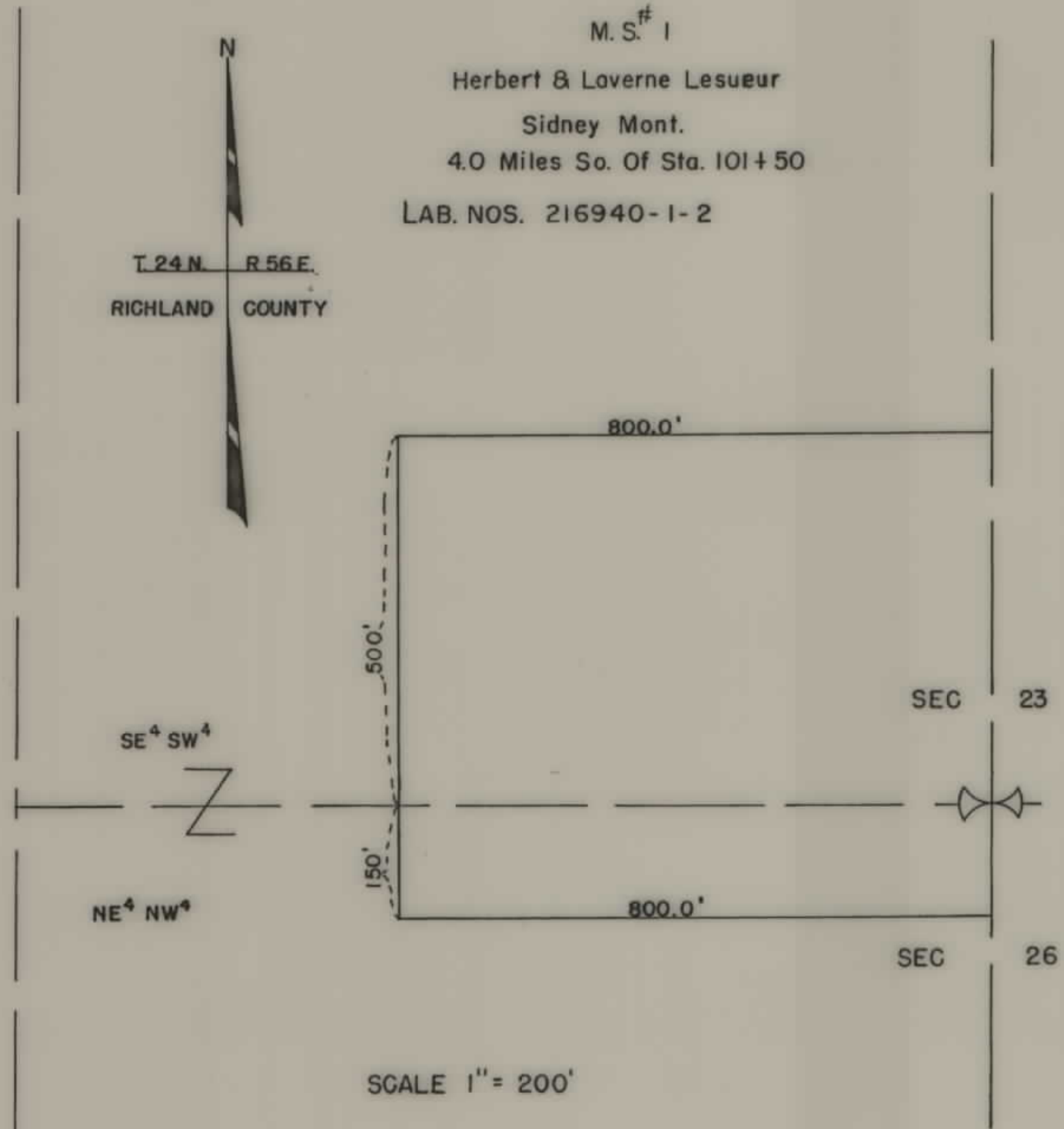


STATE OF MONTANA
 STATE HIGHWAY COMMISSION
 LAND REQUIRED FOR RIGHT OF WAY
 RICHLAND COUNTY
 SCALE 1" = 200' MAP APPROVED BY _____

MAPS MADE MARCH 10, 60
 MAPS REVISED _____
 MAPS TO BUR. PUB. ROADS _____
 MAPS COMPLETED _____

FED. ROAD DIST. NO.	STATE	FED. AID PROJ. NO.	R/W NO.	SHEET NO.	TOTAL SHEETS
8	MONT.		S-361(9)	12	12

MATERIAL SITES



MAPS MADE _____
 MAPS REVISED _____
 MAPS TO BUR. PUB. ROADS _____
 MAPS COMPLETED _____

STATE OF MONTANA
 STATE HIGHWAY COMMISSION
 LAND REQUIRED FOR RIGHT OF WAY
 COUNTY _____
 SCALE 1"=_____ MAP APPROVED BY _____