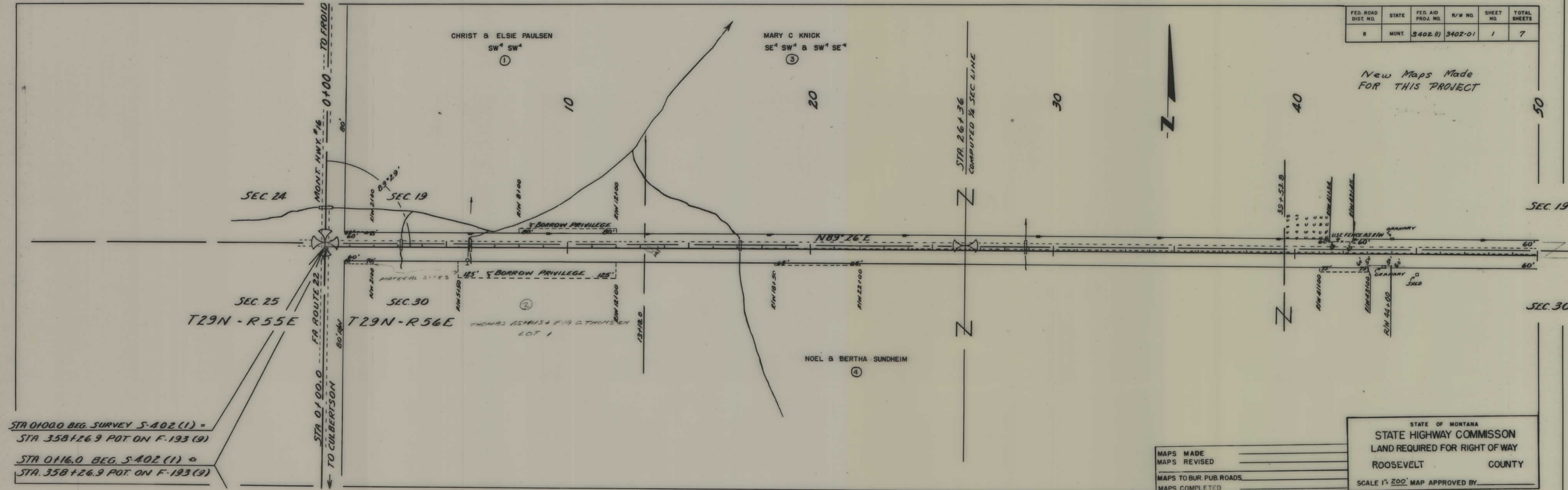


PLANS
NOT
TO
SCALE

FED. ROAD DIST. NO.	STATE	FED. AID PROJ. NO.	R/W NO.	SHEET NO.	TOTAL SHEETS
8	MONT.	5402 (1)	3402-01	1	7

New Maps Made FOR THIS PROJECT

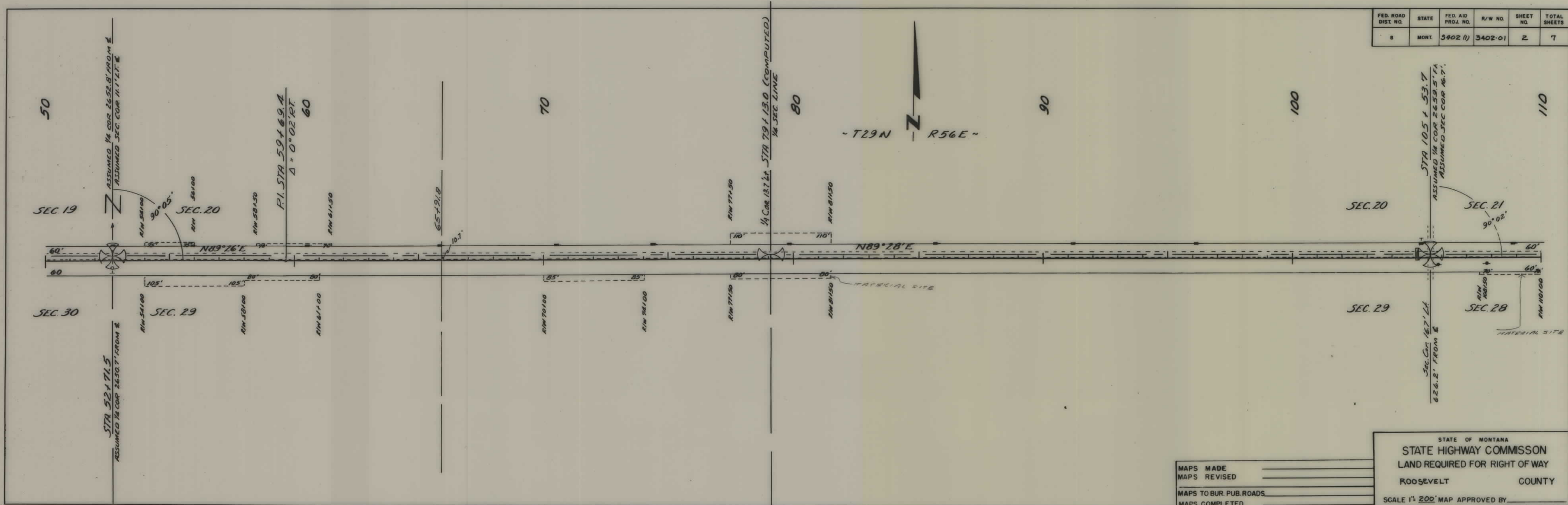


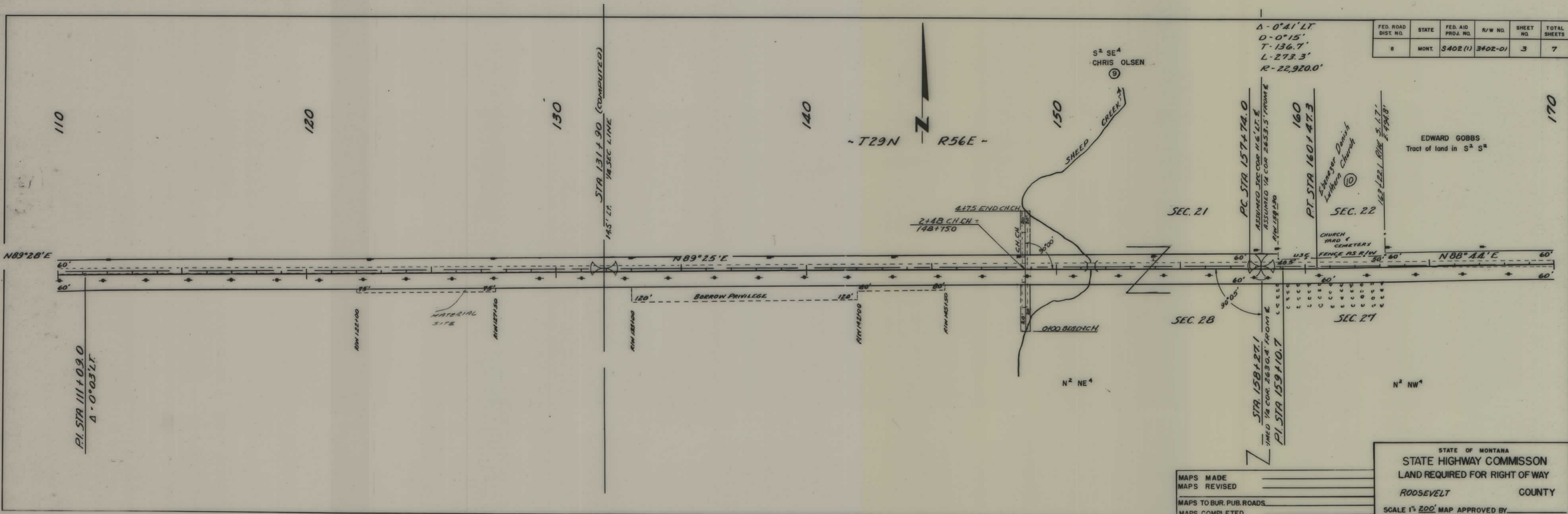
STA 0+00.0 BEG. SURVEY S-402 (1) =
 STA. 358+26.9 POT. ON F-193 (9)
 STA 0+16.0 BEG. S-402 (1) =
 STA. 358+26.9 POT. ON F-193 (9)

MAPS MADE _____
 MAPS REVISED _____
 MAPS TO BUR. PUB. ROADS _____
 MAPS COMPLETED _____

STATE OF MONTANA
 STATE HIGHWAY COMMISSION
 LAND REQUIRED FOR RIGHT OF WAY
 ROOSEVELT COUNTY
 SCALE 1" = 200' MAP APPROVED BY _____

FED. ROAD DIST. NO.	STATE	FED. AID PROJ. NO.	R/W NO.	SHEET NO.	TOTAL SHEETS
8	MONT.	3402 (1)	3402-01	2	7





FED. ROAD DIST. NO.	STATE	FED. AID PROJ. NO.	R/W NO.	SHEET NO.	TOTAL SHEETS
8	MONT.	3402(1)	3402-01	3	7

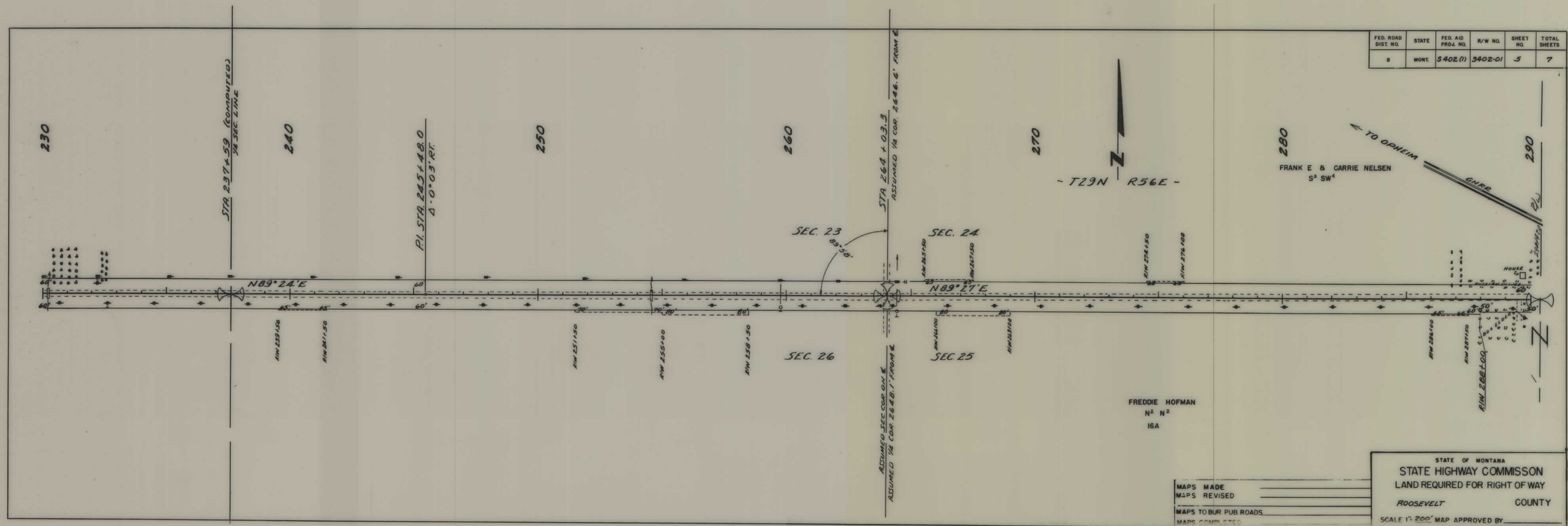
$\Delta - 0^{\circ}41' LT.$
 $D - 0^{\circ}15'$
 $T - 136.7'$
 $L - 273.3'$
 $R - 22,920.0'$

EDWARD GOBBS
Tract of land in S² S²

MAPS MADE	_____
MAPS REVISED	_____
MAPS TO BUR. PUB. ROADS	_____
MAPS COMPLETED	_____

STATE OF MONTANA
 STATE HIGHWAY COMMISSION
 LAND REQUIRED FOR RIGHT OF WAY
 ROOSEVELT COUNTY
 SCALE 1" = 200' MAP APPROVED BY _____

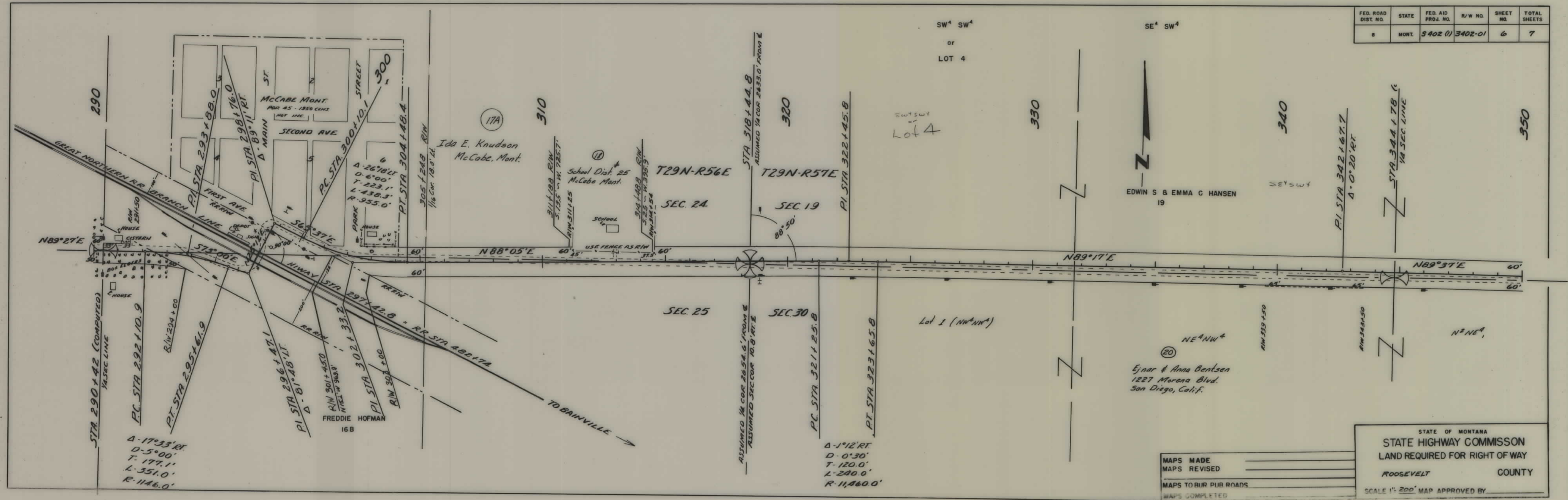
FED. ROAD DIST. NO.	STATE	FED. AID PROJ. NO.	R/W NO.	SHEET NO.	TOTAL SHEETS
8	MONT.	S402(1)	3402-01	5	7



MAPS MADE _____
 MAPS REVISED _____
 MAPS TO BUR. PUB. ROADS _____
 MAPS COMPLETED _____

STATE OF MONTANA
 STATE HIGHWAY COMMISSION
 LAND REQUIRED FOR RIGHT OF WAY
 ROOSEVELT COUNTY
 SCALE 1" = 200' MAP APPROVED BY _____

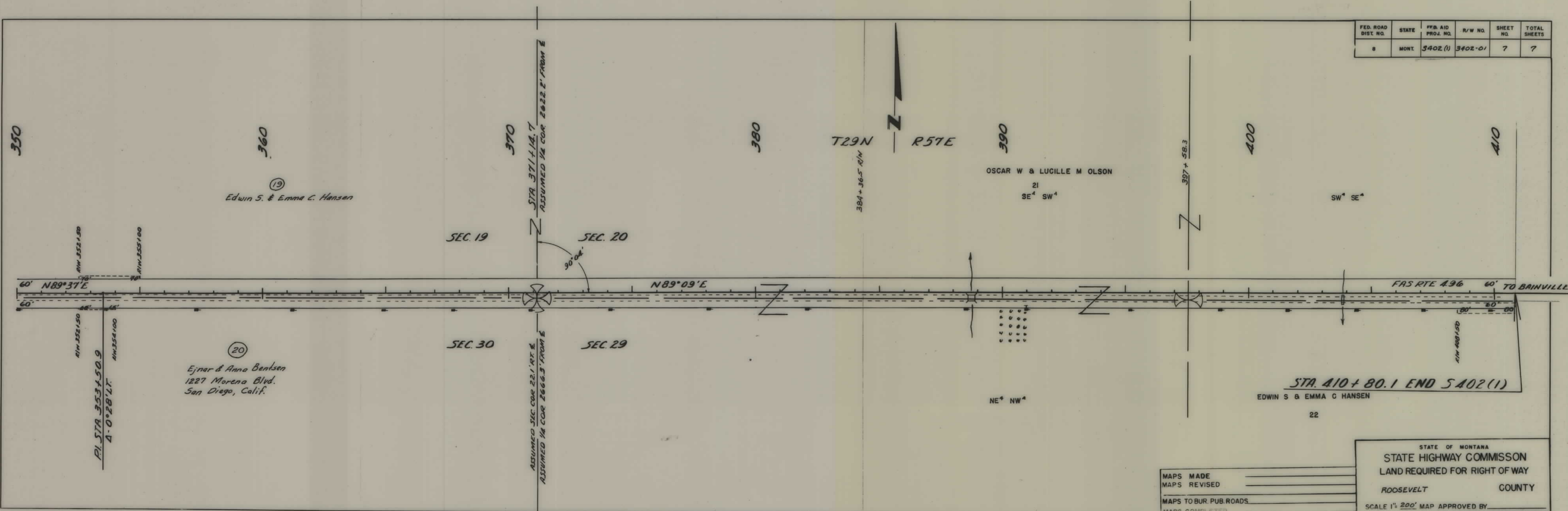
FED. ROAD DIST. NO.	STATE	FED. AID PROJ. NO.	R/W NO.	SHEET NO.	TOTAL SHEETS
8	MONT.	3402 (1)	3402-01	6	7



MAPS MADE _____
 MAPS REVISED _____
 MAPS TO BUR PUR ROADS _____
 MAPS COMPLETED _____

STATE OF MONTANA
 STATE HIGHWAY COMMISSION
 LAND REQUIRED FOR RIGHT OF WAY
 ROOSEVELT COUNTY
 SCALE 1" = 200' MAP APPROVED BY _____

FED. ROAD DIST. NO.	STATE	FED. AID PROJ. NO.	R/W NO.	SHEET NO.	TOTAL SHEETS
8	MONT.	3402 (1)	3402-01	7	7



MAPS MADE _____
 MAPS REVISED _____
 MAPS TO BUR. PUB. ROADS _____
 MAPS COMPLETED _____

STATE OF MONTANA
 STATE HIGHWAY COMMISSION
 LAND REQUIRED FOR RIGHT OF WAY
 ROOSEVELT COUNTY
 SCALE 1" = 200' MAP APPROVED BY _____