

PLANS

NOT

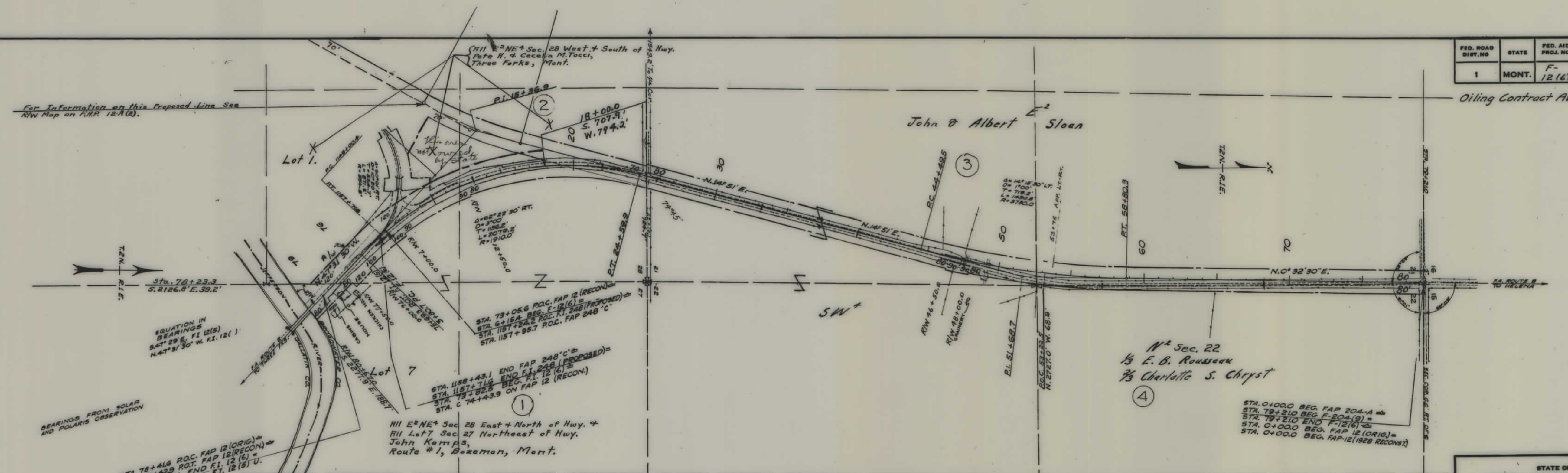
TO

SCALE

| FED. ROAD DIST. NO. | STATE | FED. AID PROJ. NO. | R/W No. | SHEET NO. | TOTAL SHEETS |
|---------------------|-------|--------------------|---------|-----------|--------------|
| 1                   | MONT. | F-12(6)            | 1012-06 | 1         | 1            |

Oiling Contract Awarded 7-23-53

For Information on this Proposed Line See R/W Map on F.A.P. 12-A(2).



STATE OF MONTANA  
 STATE HIGHWAY COMMISSION  
 PLAT SHOWING LAND  
 REQUIRED FOR RIGHT OF WAY  
 BROADWATER COUNTY

SCALE 1" = 100' MAP COMPLETED Nov. 1951.  
 DESCRIPTIONS WRITTEN BY WRC. DATE 11/23/51.  
 DESCRIPTIONS CHECKED BY L O J DATE 11-26-51

APPROVED BY  
 APPROVED BY Malcolm Bowden R/W ENGINEER