

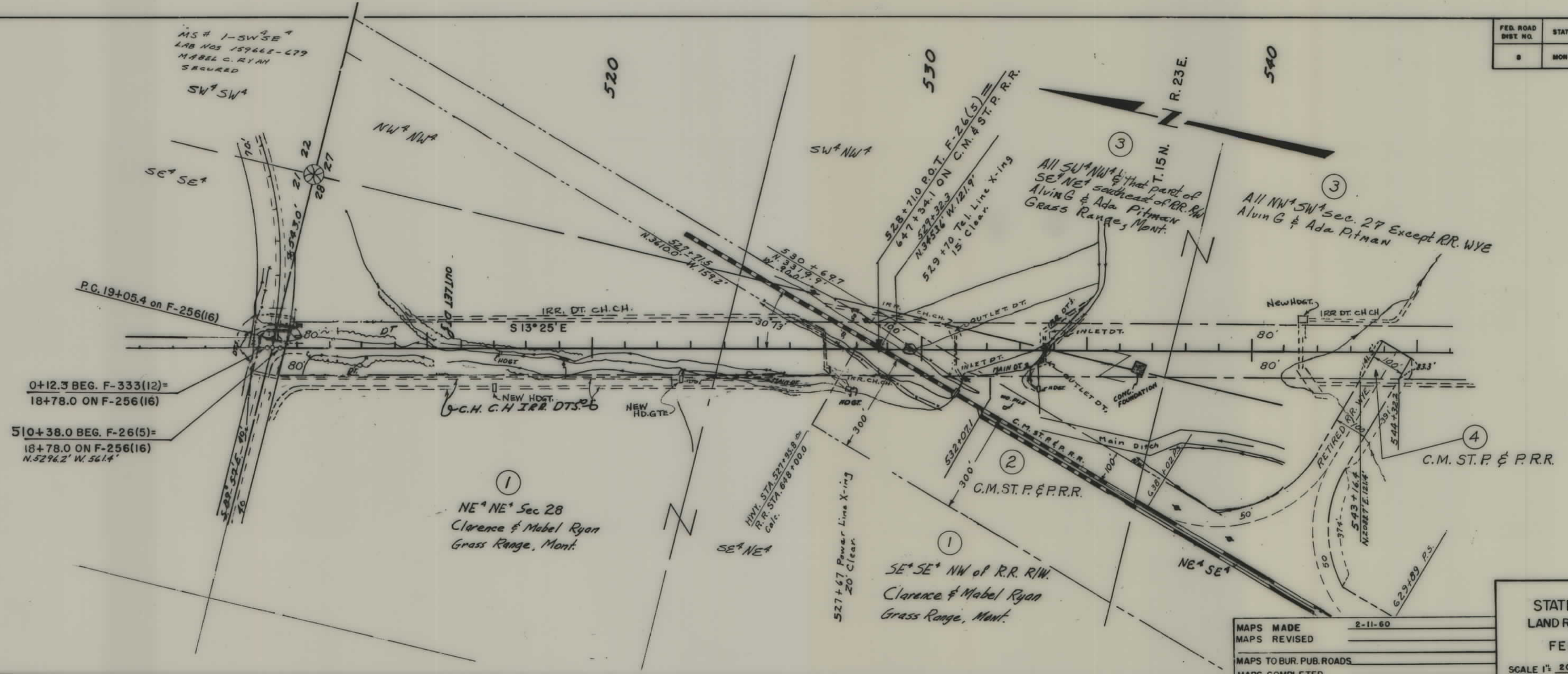
PLANS

NOT

TO

SCALE

FED. ROAD DIST. NO.	STATE	FED. AID PROJ. NO.	R/W NO.	SHEET NO.	TOTAL SHEETS
8	MONT.	F-26(5)	1026-05	1	2



MS # 1-5WSE<sup>4</sup>  
LAB NOS 15966E-C79  
MABEL C. RYAN  
SECURED  
SW<sup>4</sup> SW<sup>4</sup>

0+12.3 BEG. F-333(12)=  
18+78.0 ON F-256(16)  
510+38.0 BEG. F-26(5)=  
18+78.0 ON F-256(16)  
N. 5296.2' W. 561.4'

①  
NE<sup>4</sup> NE<sup>4</sup> Sec 28  
Clarence & Mabel Ryan  
Grass Range, Mont.

①  
SE<sup>4</sup> SE<sup>4</sup> NW of R.R. R/W.  
Clarence & Mabel Ryan  
Grass Range, Mont.

③  
All SW<sup>4</sup> NW<sup>4</sup> & that part of  
SE<sup>4</sup> NE<sup>4</sup> southeast of R.R. R/W  
Alvin G & Ada Pitman  
Grass Range, Mont.

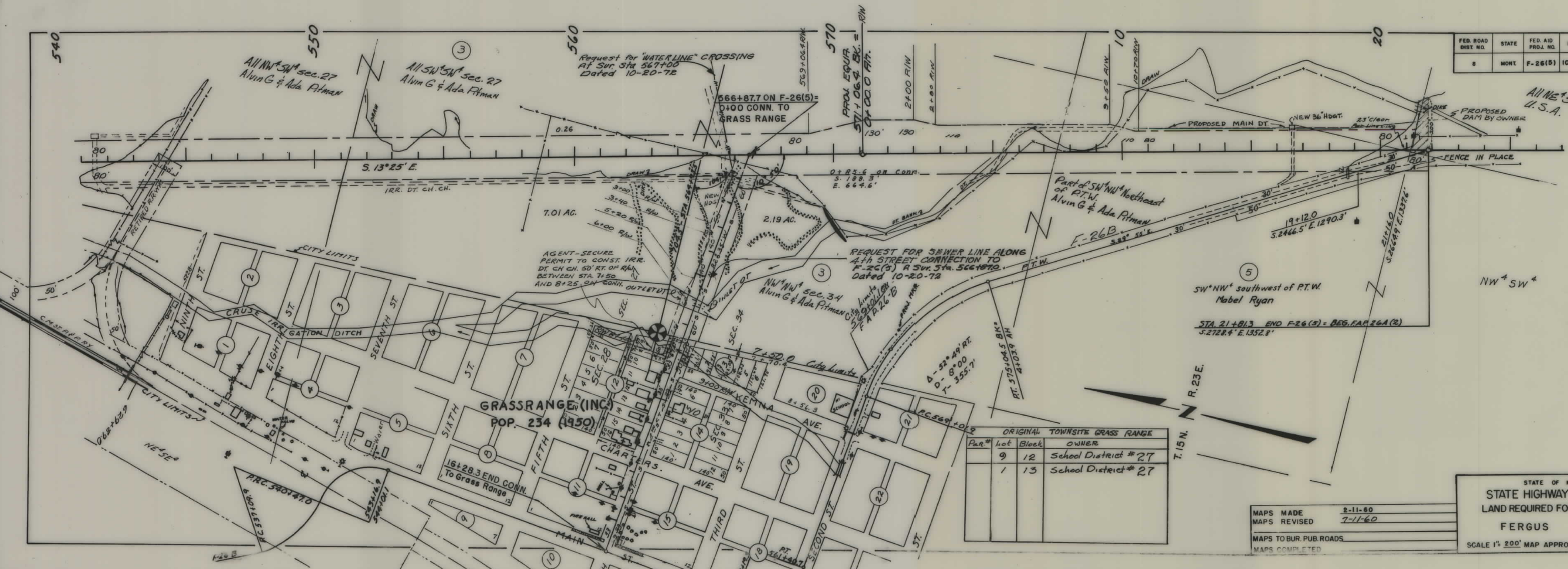
③  
All NW<sup>4</sup> SW<sup>4</sup> sec. 27 except R.R. WYE  
Alvin G & Ada Pitman

④  
C.M. ST. P. & P.R.R.

MAPS MADE	2-11-60
MAPS REVISED	
MAPS TO BUR. PUB. ROADS	
MAPS COMPLETED	

STATE OF MONTANA  
STATE HIGHWAY COMMISSION  
LAND REQUIRED FOR RIGHT OF WAY  
FERGUS COUNTY  
SCALE 1" = 200' MAP APPROVED BY \_\_\_\_\_

FED. ROAD DIST. NO.	STATE	FED. AID PROJ. NO.	R/W NO.	SHEET NO.	TOTAL SHEETS
8	MONT.	F-26(5)	1026-05	2	2



ORIGINAL TOWNSITE GRASS RANGE

Par#	lot	Block	OWNER
	9	12	School District #27
	1	13	School District #27

MAPS MADE 2-11-60  
 MAPS REVISED 7-11-60  
 MAPS TO BUR. PUB. ROADS  
 MAPS COMPLETED

STATE OF MONTANA  
 STATE HIGHWAY COMMISSION  
 LAND REQUIRED FOR RIGHT OF WAY  
 FERGUS COUNTY  
 SCALE 1" = 200' MAP APPROVED BY