

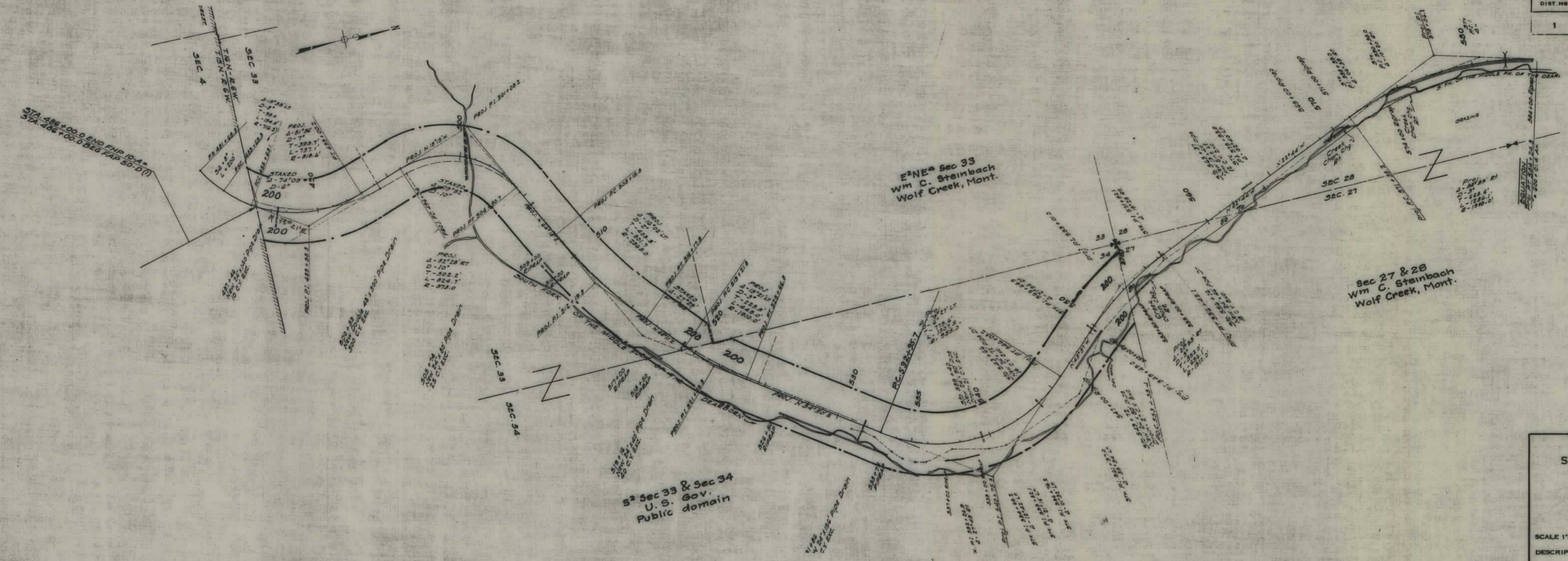
PLANS

NOT

TO

SCALE

FED. ROAD DIST. NO.	STATE	FED. AID PROJ. NO.	STATE P/W NO.	SHEET NO.	TOTAL SHEETS
1	MONT	FAP 50-(A)	3451	1	3



E<sup>2</sup>NE<sup>4</sup> Sec 33  
Wm C. Steinbach  
Wolf Creek, Mont.

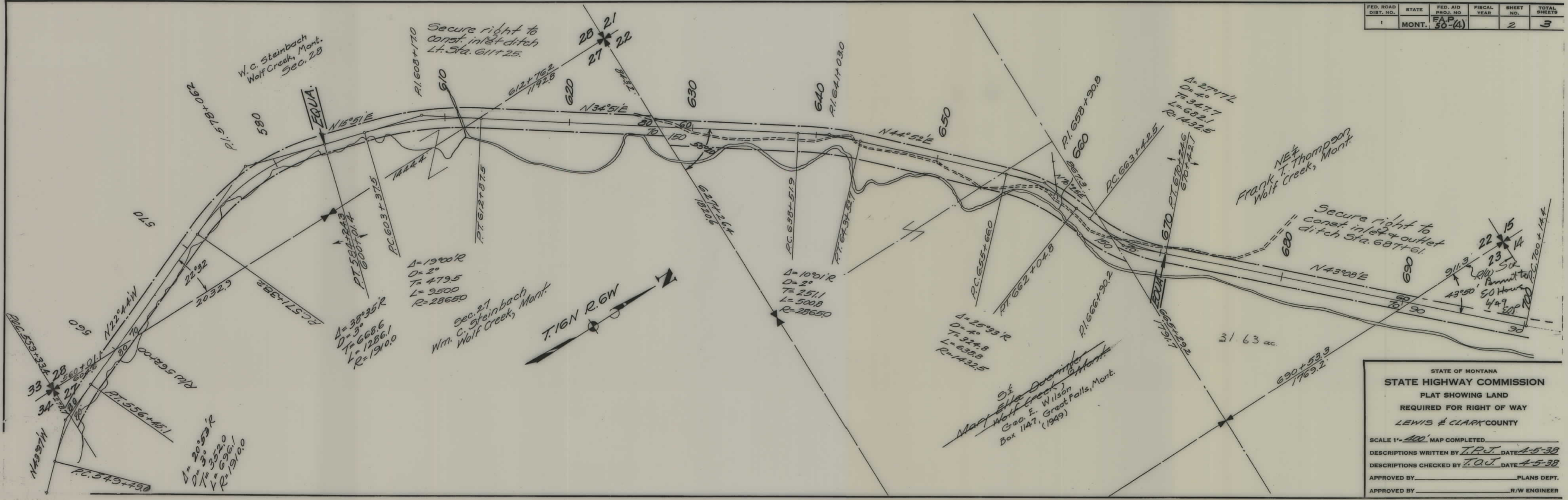
Sec 27 & 28  
Wm C. Steinbach  
Wolf Creek, Mont.

S<sup>2</sup> Sec 33 & Sec 34  
U. S. Gov.  
Public domain

STATE OF MONTANA  
STATE HIGHWAY COMMISSION  
PLAT SHOWING LAND  
REQUIRED FOR RIGHT OF WAY  
LEWIS & CLARK COUNTY

SCALE 1" = 400' MAP COMPLETED Nov 1944  
 DESCRIPTIONS WRITTEN BY JOP DATE 11-24-44  
 DESCRIPTIONS CHECKED BY M.B. DATE "  
 APPROVED BY \_\_\_\_\_ PLANS DEPT.  
 APPROVED BY \_\_\_\_\_ R/W ENGINEER

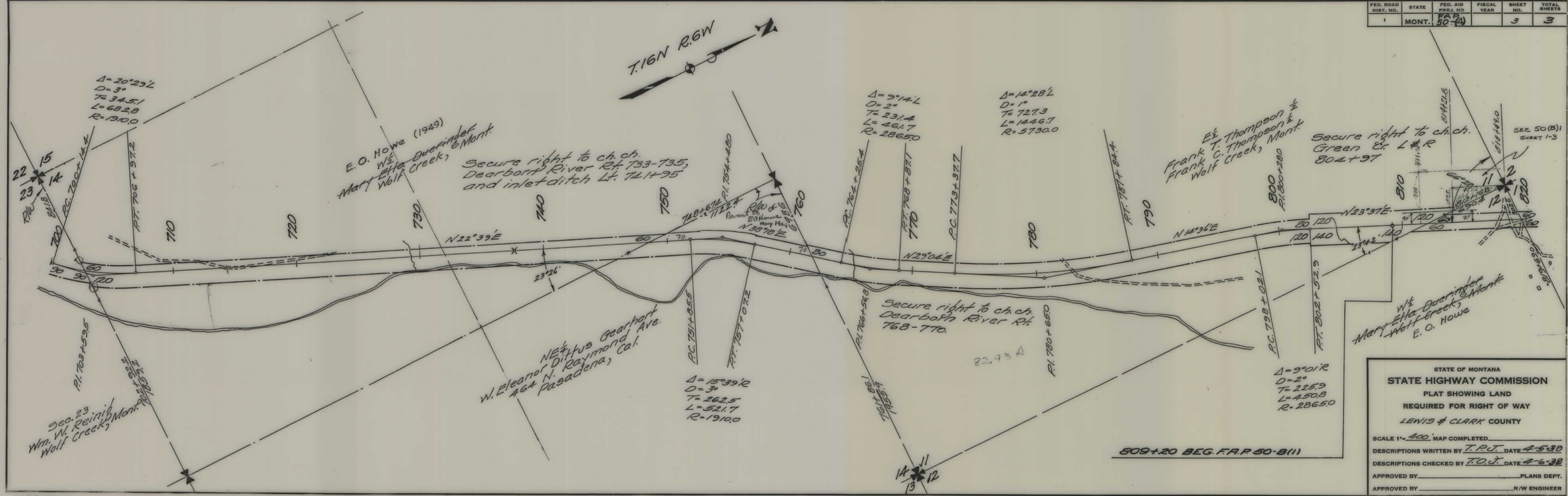
FED. ROAD DIST. NO.	STATE	FED. AID PROJ. NO.	FISCAL YEAR	SHEET NO.	TOTAL SHEETS
1	MONT.	FAP 50-4		2	3



STATE OF MONTANA  
 STATE HIGHWAY COMMISSION  
 PLAT SHOWING LAND  
 REQUIRED FOR RIGHT OF WAY  
 LEWIS & CLARK COUNTY

SCALE 1" = 400' MAP COMPLETED \_\_\_\_\_  
 DESCRIPTIONS WRITTEN BY T.P.J. DATE 4-5-38  
 DESCRIPTIONS CHECKED BY T.O.J. DATE 4-5-38  
 APPROVED BY \_\_\_\_\_ PLANS DEPT.  
 APPROVED BY \_\_\_\_\_ R/W ENGINEER

FED. ROAD DIST. NO.	STATE	FED. AID PROJ. NO.	FISCAL YEAR	SHEET NO.	TOTAL SHEETS
1	MONT.	50-4		3	3



STATE OF MONTANA  
**STATE HIGHWAY COMMISSION**  
 PLAT SHOWING LAND  
 REQUIRED FOR RIGHT OF WAY  
 LEWIS & CLARK COUNTY

SCALE 1" = 400'. MAP COMPLETED \_\_\_\_\_  
 DESCRIPTIONS WRITTEN BY T.P.J. DATE 4-5-38  
 DESCRIPTIONS CHECKED BY T.O.J. DATE 4-6-38  
 APPROVED BY \_\_\_\_\_ PLANS DEPT.  
 APPROVED BY \_\_\_\_\_ R/W ENGINEER