

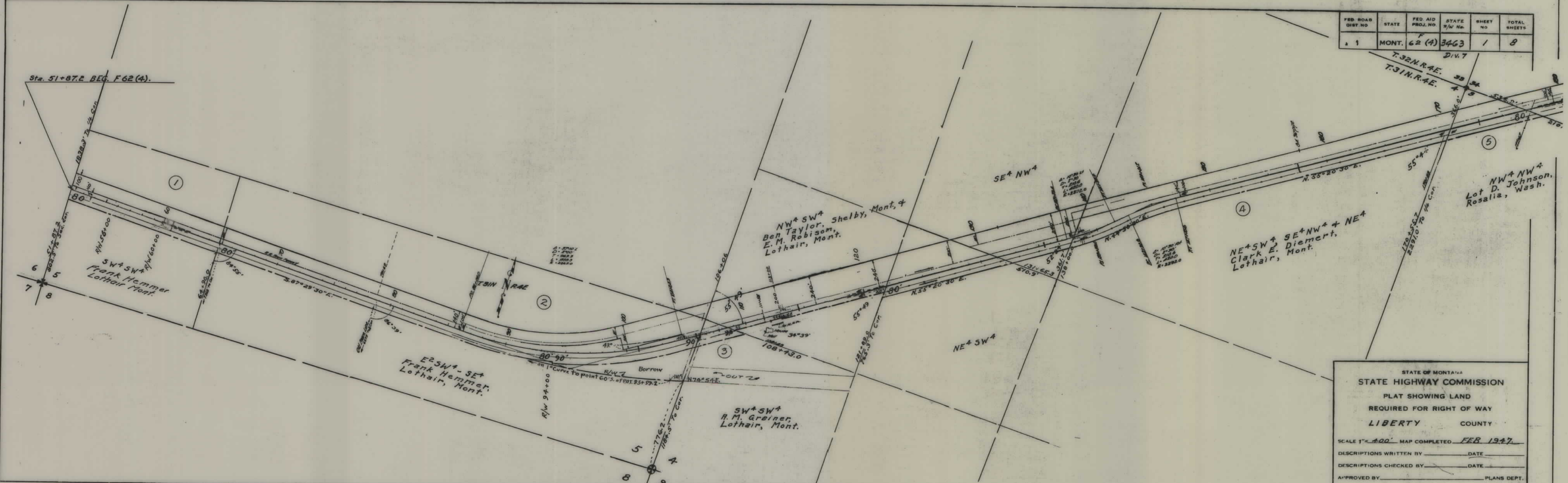
PLANS

NOT

TO

SCALE

FED. ROAD DIST. NO.	STATE	FED. AID PROJ. NO.	STATE R/W No.	SHEET NO.	TOTAL SHEETS
1	MONT.	62 (A)	3463	1	8



STATE OF MONTANA  
 STATE HIGHWAY COMMISSION  
 PLAT SHOWING LAND  
 REQUIRED FOR RIGHT OF WAY  
 LIBERTY COUNTY

SCALE 1" = 400' MAP COMPLETED FEB 1947

DESCRIPTIONS WRITTEN BY \_\_\_\_\_ DATE \_\_\_\_\_

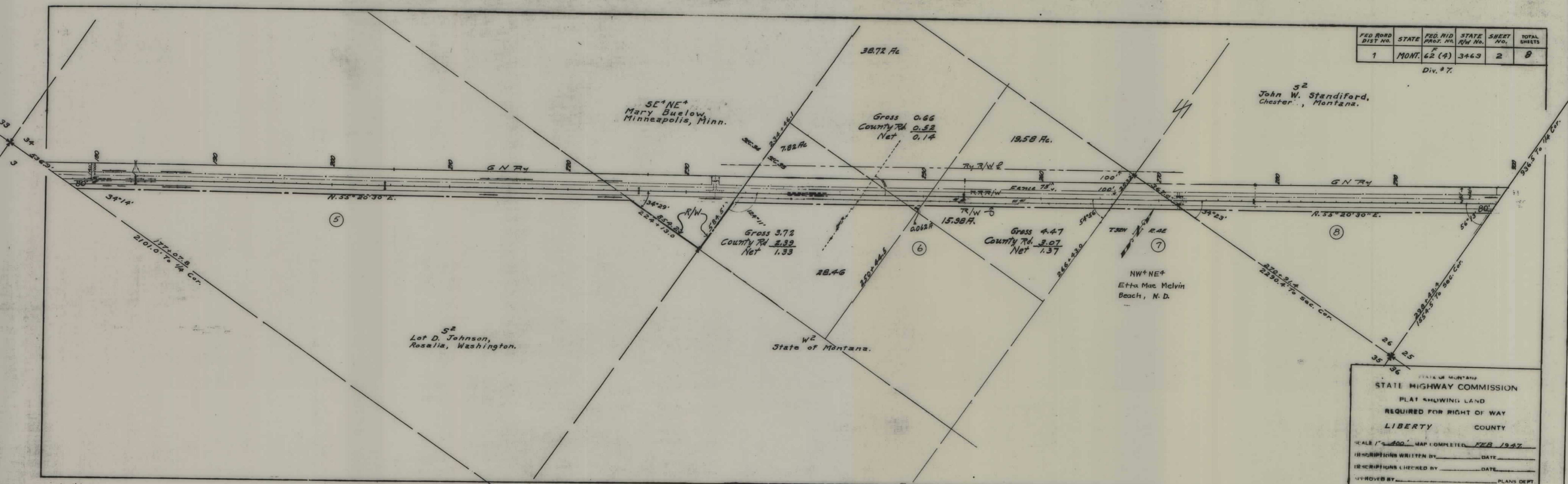
DESCRIPTIONS CHECKED BY \_\_\_\_\_ DATE \_\_\_\_\_

APPROVED BY \_\_\_\_\_ PLANS DEPT.

APPROVED BY \_\_\_\_\_ R/W ENGINEER

FED. ROAD DIST. NO.	STATE	FED. ROAD PROJ. NO.	STATE R/W NO.	SHEET NO.	TOTAL SHEETS
1	MONT.	62 (4)	3463	2	8

Div. # 7.



SE<sup>1</sup>NE<sup>4</sup>  
Mary Buelow,  
Minneapolis, Minn.

52  
John W. Standiford,  
Chester, Montana.

52  
Lot D. Johnson,  
Rosalia, Washington.

W2  
State of Montana.

NW<sup>1</sup>NE<sup>4</sup>  
Etta Mae Melvin  
Beach, N. D.

Gross 3.72  
County Rd. 2.32  
Net 1.33

Gross 4.47  
County Rd. 3.07  
Net 1.37

Gross 0.66  
County Rd. 0.52  
Net 0.14

STATE OF MONTANA  
STATE HIGHWAY COMMISSION  
PLAT SHOWING LAND  
REQUIRED FOR RIGHT OF WAY  
LIBERTY COUNTY

SCALE 1" = 400' MAP COMPLETED FEB 1947

DESCRIPTIONS WRITTEN BY \_\_\_\_\_ DATE \_\_\_\_\_

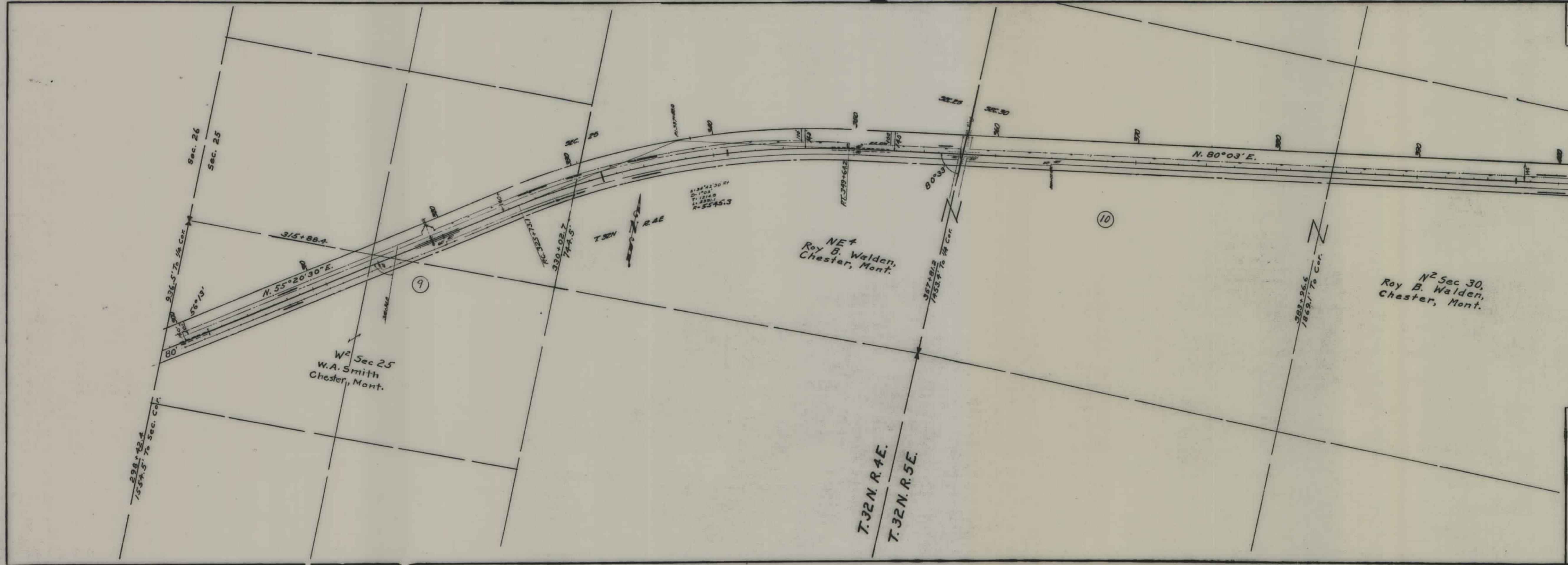
DESCRIPTIONS CHECKED BY \_\_\_\_\_ DATE \_\_\_\_\_

APPROVED BY \_\_\_\_\_ PLANS DEPT.

APPROVED BY \_\_\_\_\_ CIVIL ENGINEER

FED. ROAD DIST. NO.	STATE	FED. AID PROJ. NO.	STATE T/W No.	SHEET No.	TOTAL SHEETS
1	MONT.	62 (A)	3463	3	8

Div. 7.



STATE OF MONTANA  
**STATE HIGHWAY COMMISSION**  
 PLAT SHOWING LAND  
 REQUIRED FOR RIGHT OF WAY  
 LIBERTY COUNTY

SCALE 1" = 400' MAP COMPLETED FEB 1947.

DESCRIPTIONS WRITTEN BY \_\_\_\_\_ DATE \_\_\_\_\_

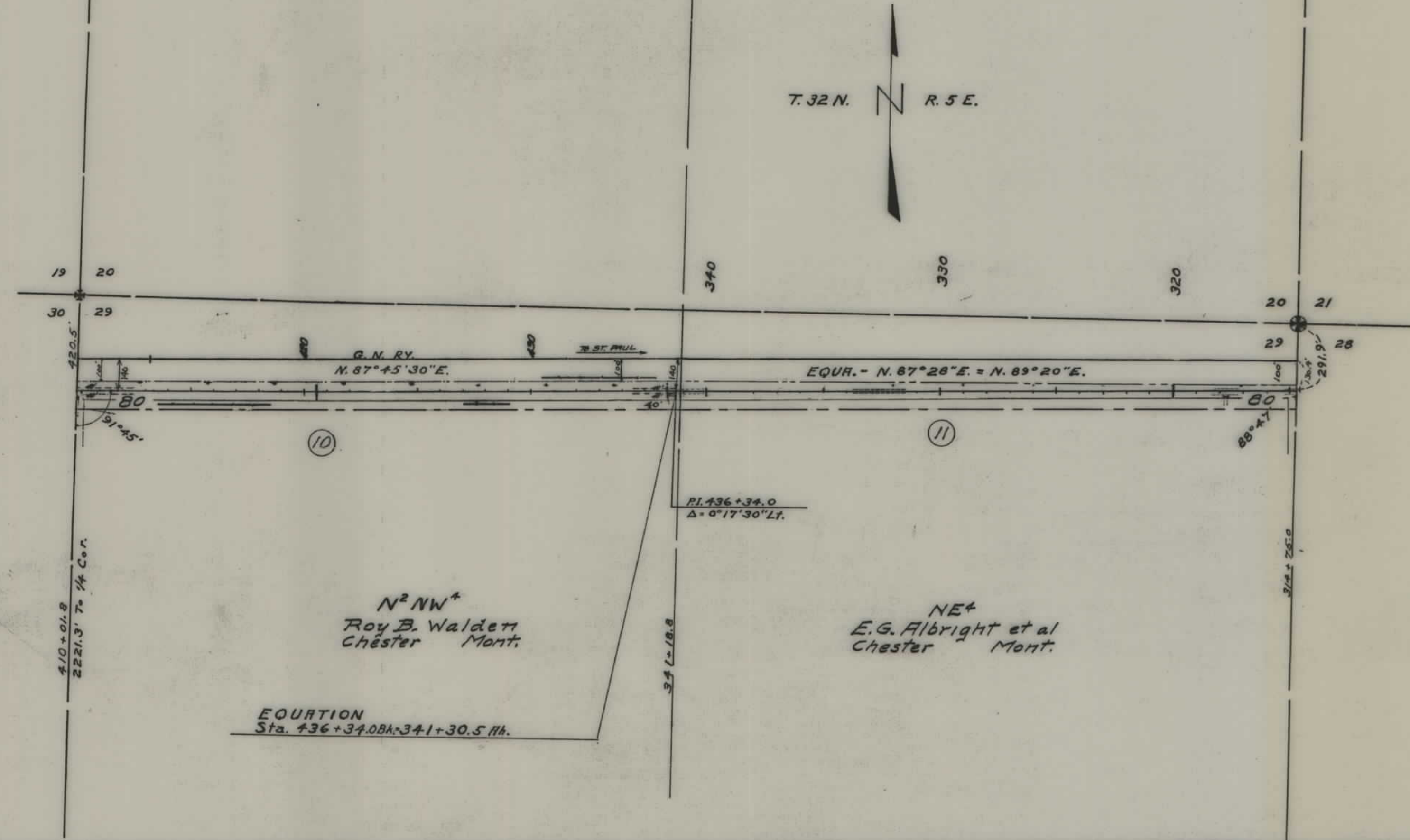
DESCRIPTIONS CHECKED BY \_\_\_\_\_ DATE \_\_\_\_\_

APPROVED BY \_\_\_\_\_ PLANS DEPT.

APPROVED BY \_\_\_\_\_ R/W ENGINEER

FED. ROAD DIST NO.	STATE	FED AID PROJ. NO.	STATE R/W No.	SHEET No.	TOTAL SHEETS
1	MONT	62 (4)	3463	4	8

Div. 7



STATE OF MONTANA  
 STATE HIGHWAY COMMISSION  
 PLAT SHOWING LAND  
 REQUIRED FOR RIGHT OF WAY  
 LIBERTY COUNTY

SCALE 1" = 400' MAP COMPLETED FEB 1947.

DESCRIPTIONS WRITTEN BY \_\_\_\_\_ DATE \_\_\_\_\_

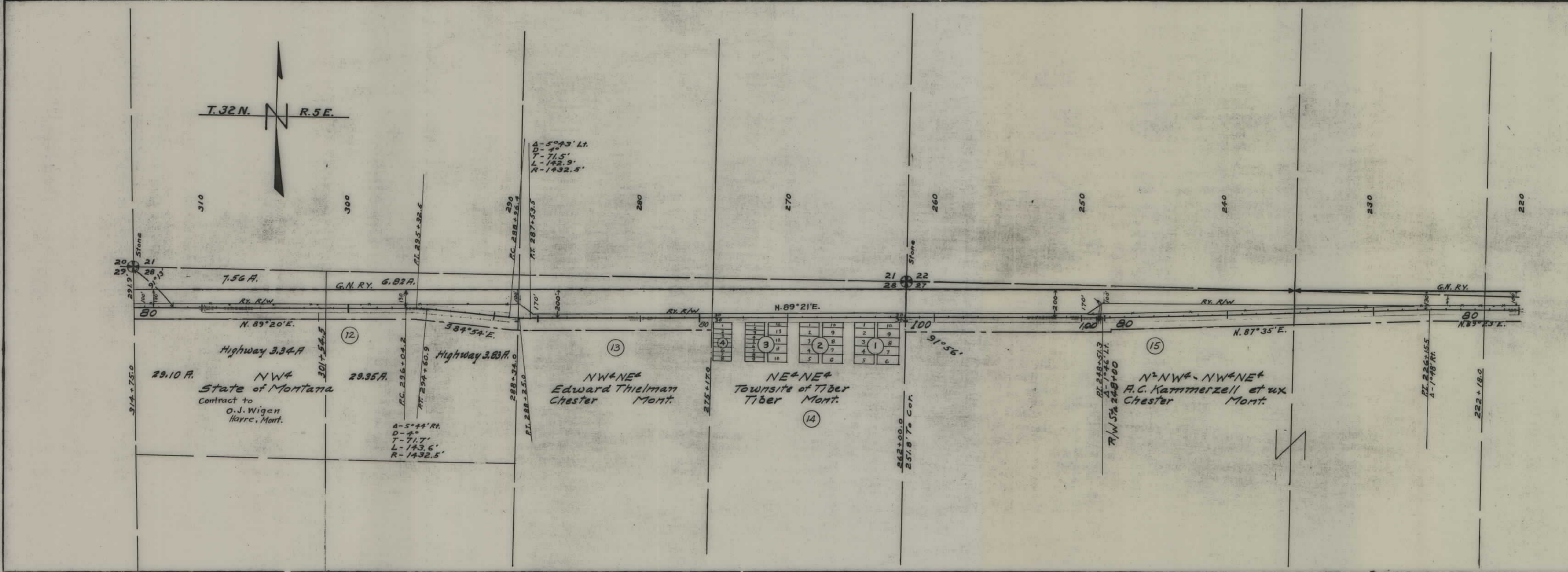
DESCRIPTIONS CHECKED BY \_\_\_\_\_ DATE \_\_\_\_\_

APPROVED BY \_\_\_\_\_ PLANS DEPT.

APPROVED BY \_\_\_\_\_ P.W. ENGINEER

FED. ROAD DIST. NO.	STATE	FED. AID PROJ. NO.	STATE R/W No.	SHEET No.	TOTAL SHEETS
1	MONT.	62 (4)	3463	5	8

Div 7



STATE OF MONTANA  
 STATE HIGHWAY COMMISSION  
 PLAT SHOWING LAND  
 REQUIRED FOR RIGHT OF WAY  
 LIBERTY COUNTY

SCALE 1" = 400' MAP COMPLETED FEB 1947  
 DESCRIPTIONS WRITTEN BY \_\_\_\_\_ DATE \_\_\_\_\_  
 DESCRIPTIONS CHECKED BY \_\_\_\_\_ DATE \_\_\_\_\_  
 APPROVED BY \_\_\_\_\_ PLANS DEPT.  
 APPROVED BY \_\_\_\_\_ R/W ENGINEER







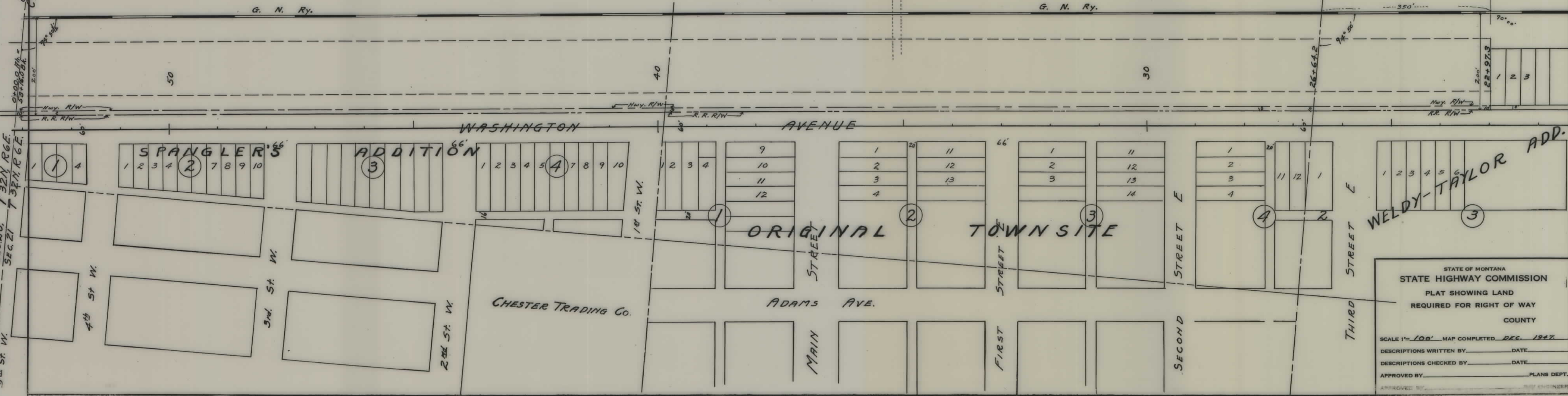
# CHESTER, MONTANA.

FED. ROAD DIST. NO.	STATE	FED. AID PROJ. NO.	FISCAL YEAR	SHEET NO.	TOTAL SHEETS
1	MONT.	F-62 (A)	3463	8	8

O.L.G. 349 275-1984  
 Comp V.S. = 276+023

SEC. 20, T 32N R 6E  
 SEC. 21 T 32N R 6E

5th St. W.



STATE OF MONTANA  
 STATE HIGHWAY COMMISSION  
 PLAT SHOWING LAND  
 REQUIRED FOR RIGHT OF WAY  
 COUNTY \_\_\_\_\_

SCALE 1" = 100' MAP COMPLETED DEC. 1947.  
 DESCRIPTIONS WRITTEN BY \_\_\_\_\_ DATE \_\_\_\_\_  
 DESCRIPTIONS CHECKED BY \_\_\_\_\_ DATE \_\_\_\_\_  
 APPROVED BY \_\_\_\_\_ PLANS DEPT.  
 APPROVED BY \_\_\_\_\_ CIVIL ENGINEER