

PLANS

NOT

TO

SCALE



RIGHT OF WAY BUREAU  
TRANSMITTAL MEMO

*BTM*  
1-30-04

TO: Shane Mintz, Supervisor  
Real Estate Services Section

FROM: *for* *Ramona Ellens*  
Bruce J. Masiak  
R/W Plans Section

DATE: December 22, 2003

PROJECT: F 62(5)  
UPN Y643005

DESIGNATION: Shelby - Chester

Sheet 1 of the right-of-way plans has been revised to reflect the sale of excess land per the memo from Linda M. Peterson of Real Estate Services Section dated December 8, 2003.

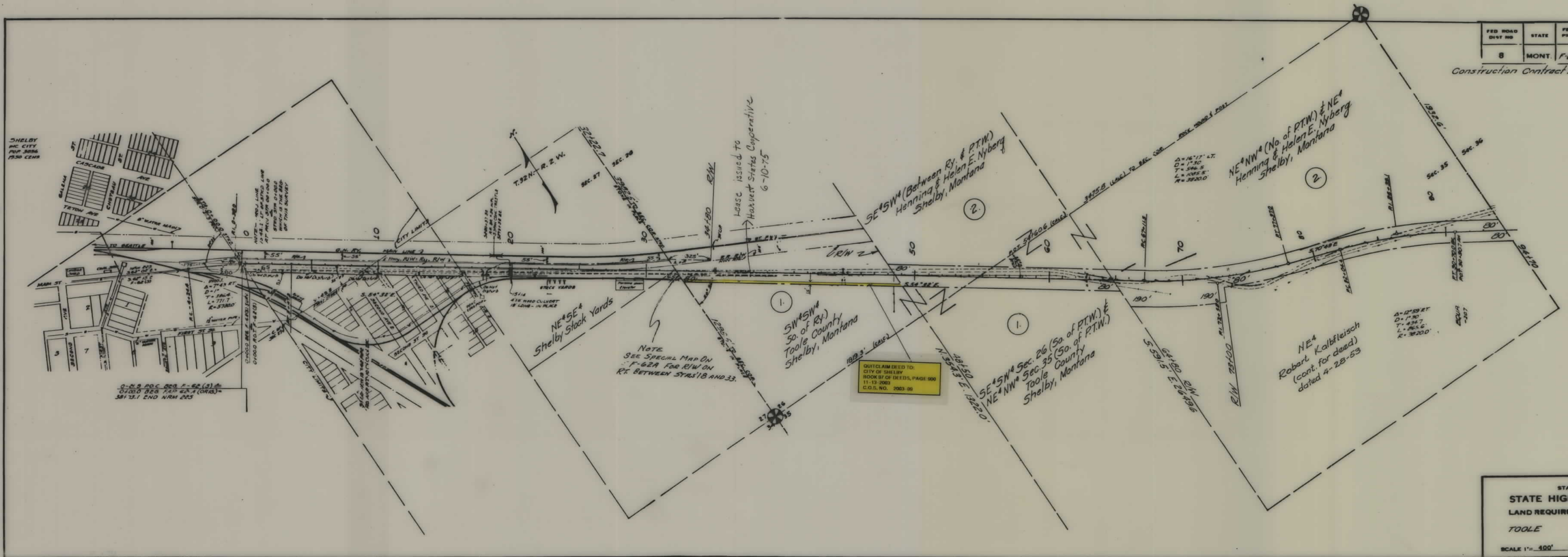
initial: *BTM by Rlee*

cc Steve Nickel



FED ROAD DIST NO	STATE	FED AID PROJ NO	R/W NO.	SHEET NO.	TOTAL SHEETS
8	MONT.	F-62(5)	062-05	1	6

Construction Contract Awarded Dec. 17, 1953



QUITCLAIM DEED TO:  
CITY OF SHELBY  
BOOK 97 OF DEEDS, PAGE 900  
11-13-2003  
C.O.S. NO. 2003-06

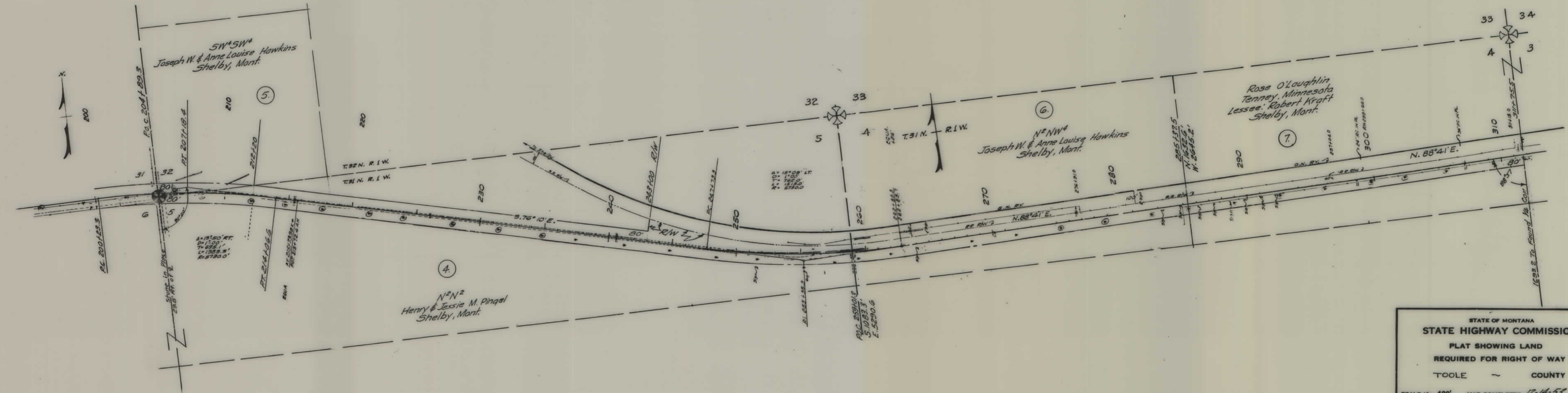
STATE OF MONTANA  
STATE HIGHWAY COMMISSION  
LAND REQUIRED FOR RIGHT OF WAY  
TOOLE COUNTY  
SCALE 1" = 400' MAP COMPLETED 12-15-53







FED. ROAD DIST. NO.	STATE	FED. AID PROJ. NO.	R/W NO.	SHEET NO.	TOTAL SHEETS
8	MONT.	F 62(5)	10.62-05	3	6



STATE OF MONTANA  
**STATE HIGHWAY COMMISSION**  
 PLAT SHOWING LAND  
 REQUIRED FOR RIGHT OF WAY  
 TOOLE COUNTY

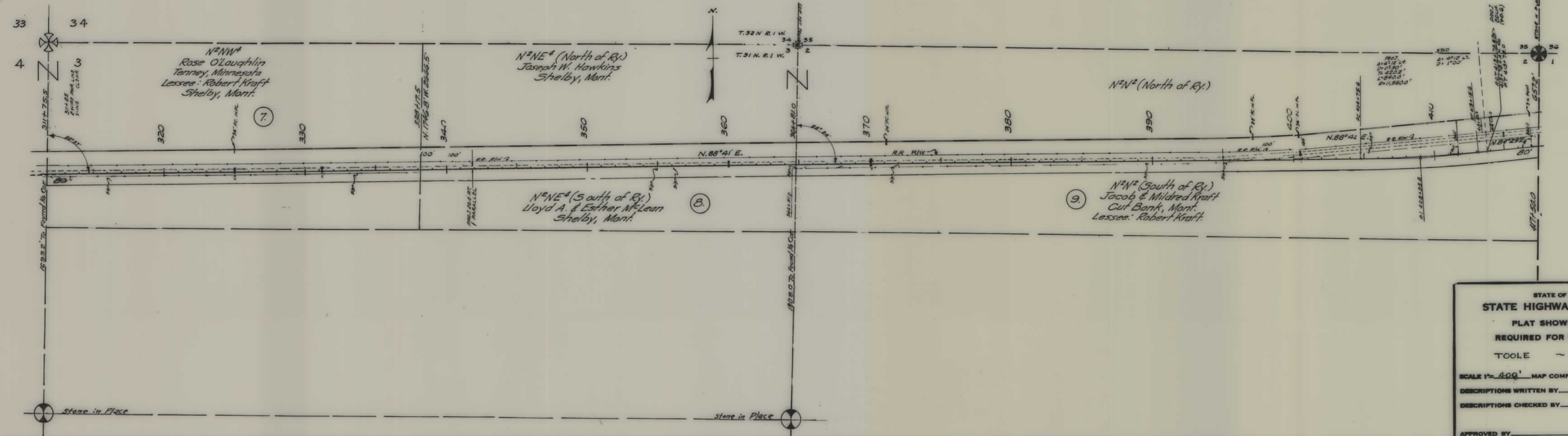
SCALE 1" = 400' MAP COMPLETED 12-14-53

DESCRIPTIONS WRITTEN BY \_\_\_\_\_ DATE \_\_\_\_\_

DESCRIPTIONS CHECKED BY \_\_\_\_\_ DATE \_\_\_\_\_

APPROVED BY \_\_\_\_\_ R/W ENGINEER

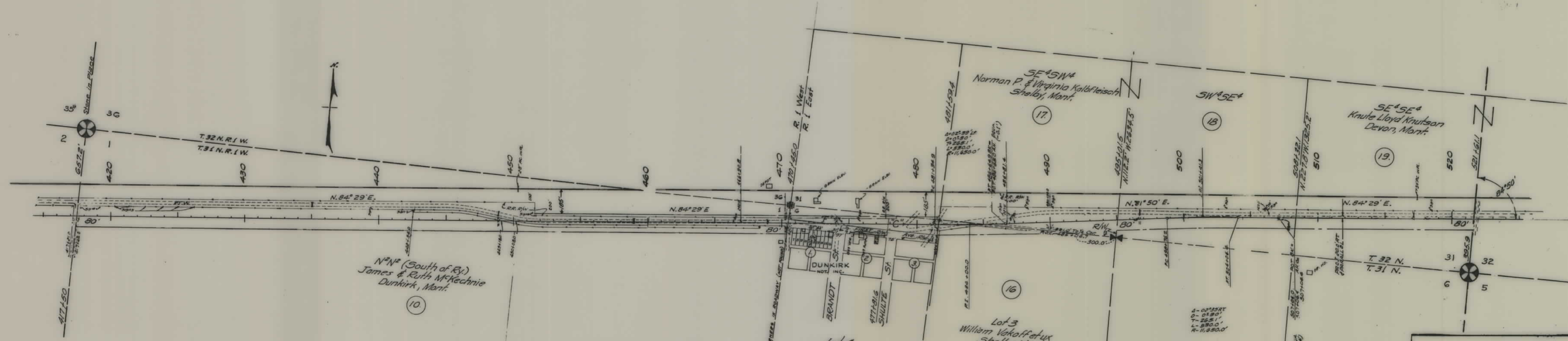
FED. ROAD DIST. NO.	STATE	FED. AID PROJ. NO.	R/W NO.	SHEET NO.	TOTAL SHEETS
8	MONT.	F 62(5)	1062-05	4	6



STATE OF MONTANA  
**STATE HIGHWAY COMMISSION**  
 PLAT SHOWING LAND  
 REQUIRED FOR RIGHT OF WAY  
 TOOLE COUNTY  
 SCALE 1" = 400' MAP COMPLETED 12-14-53  
 DESCRIPTIONS WRITTEN BY \_\_\_\_\_ DATE \_\_\_\_\_  
 DESCRIPTIONS CHECKED BY \_\_\_\_\_ DATE \_\_\_\_\_  
 APPROVED BY \_\_\_\_\_ R/W ENGINEER



FED. ROAD DIST. NO.	STATE	FED. AID PROJ. NO.	R/W NO.	SHEET NO.	TOTAL SHEETS
8	MONT.	FG2(5)	1062-05	5	6



- 11. "F" - 470+45.0 to 477+81.6 - Arthur C. Forest
- 12. "C" - 477+81.6 to 481+59.4 - Toole County - Shelby, Mont.
- 13. Block 1 - Lots No. 7, 8, 9 & 10 - James & Ruth McKechnie - Dunkirk, Mont.
- 14. Block 1 - Lots No. 11 & 12 - William & Agnes Rose Semoff - Gilford, Mont.
- 15. Block 1 - Lots No. 13, 14, 15 & 16 - James & Ruth McKechnie - Dunkirk, Mont.

STATE OF MONTANA  
STATE HIGHWAY COMMISSION

PLAT SHOWING LAND  
REQUIRED FOR RIGHT OF WAY

TOOLE COUNTY

SCALE 1" = 400' MAP COMPLETED 12-15-53

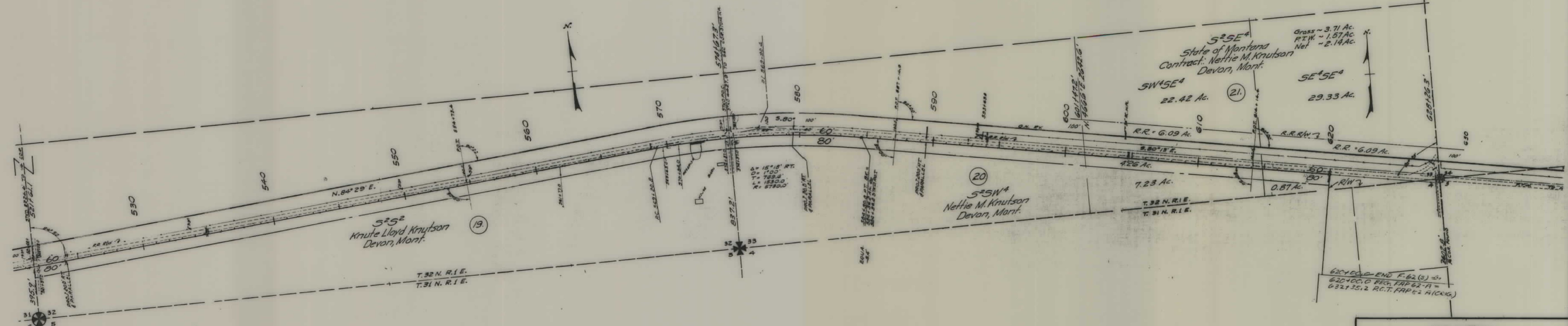
DESCRIPTIONS WRITTEN BY \_\_\_\_\_ DATE \_\_\_\_\_

DESCRIPTIONS CHECKED BY \_\_\_\_\_ DATE \_\_\_\_\_

APPROVED BY \_\_\_\_\_ R/W ENGINEER



FED. ROAD DIST. NO.	STATE	FED. AID PROJ. NO.	R/W No.	SHEET No.	TOTAL SHEETS
8	MONT.	F 62(5)	1062-05	6	6



STATE OF MONTANA  
 STATE HIGHWAY COMMISSION  
 PLAT SHOWING LAND  
 REQUIRED FOR RIGHT OF WAY  
 TOOLE ~ COUNTY

SCALE 1" = 400' MAP COMPLETED 12-15-53  
 DESCRIPTIONS WRITTEN BY \_\_\_\_\_ DATE \_\_\_\_\_  
 DESCRIPTIONS CHECKED BY \_\_\_\_\_ DATE \_\_\_\_\_

APPROVED BY \_\_\_\_\_ R/W ENGINEER