

PLANS

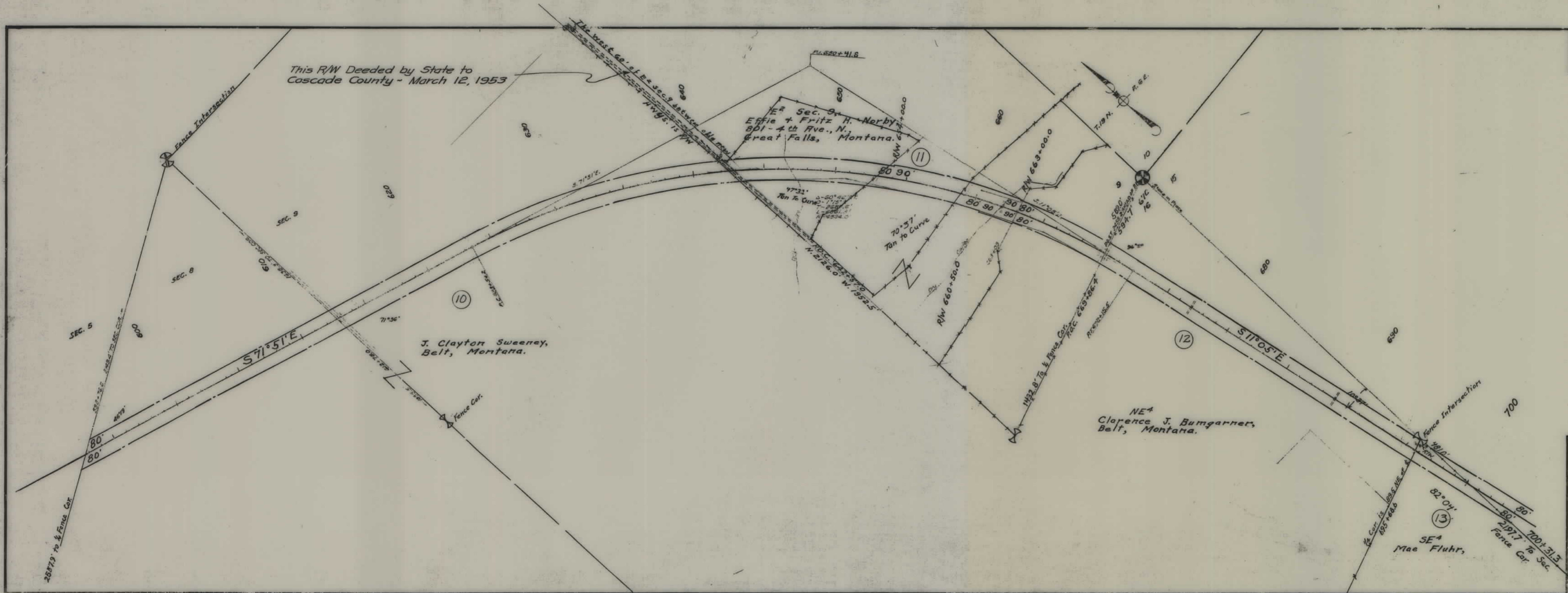
NOT

TO

SCALE



FED. ROAD DIST. NO.	STATE	FED. AID PROJ. NO.	R/W No.	SHEET NO.	TOTAL SHEETS
1	MONT.	F 64 (7)	1064-07	2	3



STATE OF MONTANA  
STATE HIGHWAY COMMISSION

PLAT SHOWING LAND  
REQUIRED FOR RIGHT OF WAY

Cascade COUNTY

SCALE 1" = 400' MAP COMPLETED October 1950

DESCRIPTIONS WRITTEN BY J. P. DATE 11/15/50

DESCRIPTIONS CHECKED BY MRC DATE 11/15/50

APPROVED BY \_\_\_\_\_ PLANS DEPT.

APPROVED BY \_\_\_\_\_ R/W ENGINEER

