

PLANS

NOT

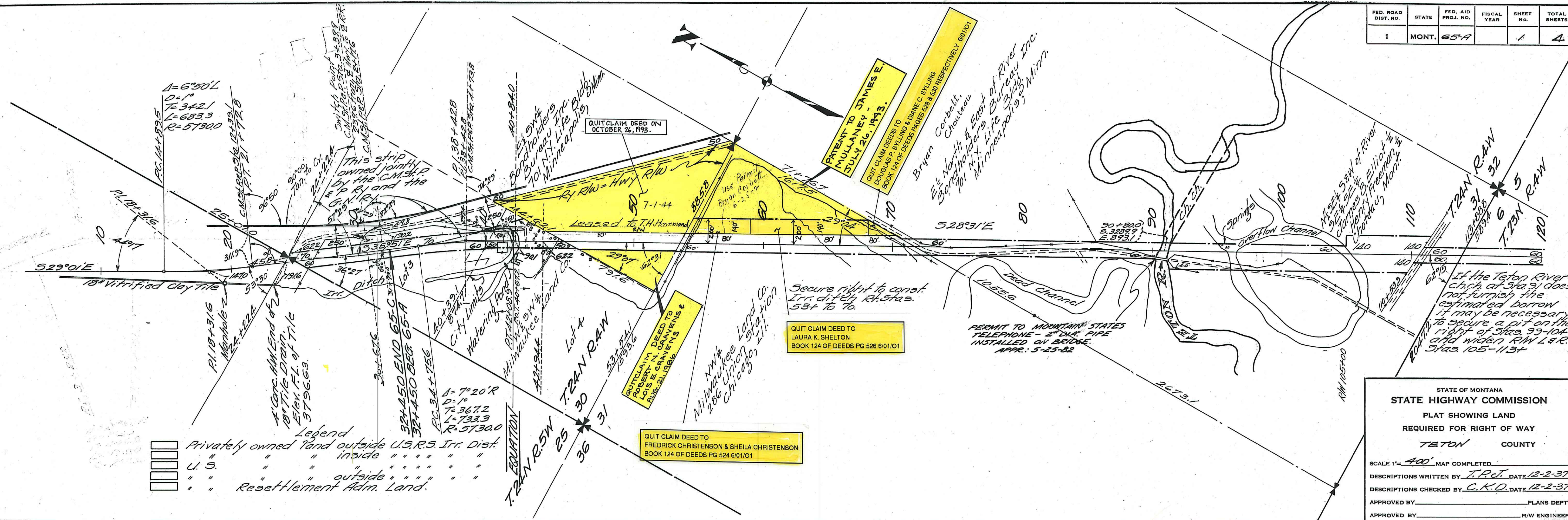
TO

SCALE

FED. ROAD DIST. NO.	STATE	FED. AID PROJ. NO.	FISCAL YEAR	SHEET NO.	TOTAL SHEETS
1	MONT.	65-A		1	4

Legend

Privately owned land outside U.S.R.S. Irr. Dist.
 U. S. " " inside " " " "
 " " " outside " " " "
 " " Resettlement Adm. Land.



STATE OF MONTANA
STATE HIGHWAY COMMISSION

PLAT SHOWING LAND
REQUIRED FOR RIGHT OF WAY

TETON COUNTY

SCALE 1"=400' MAP COMPLETED.

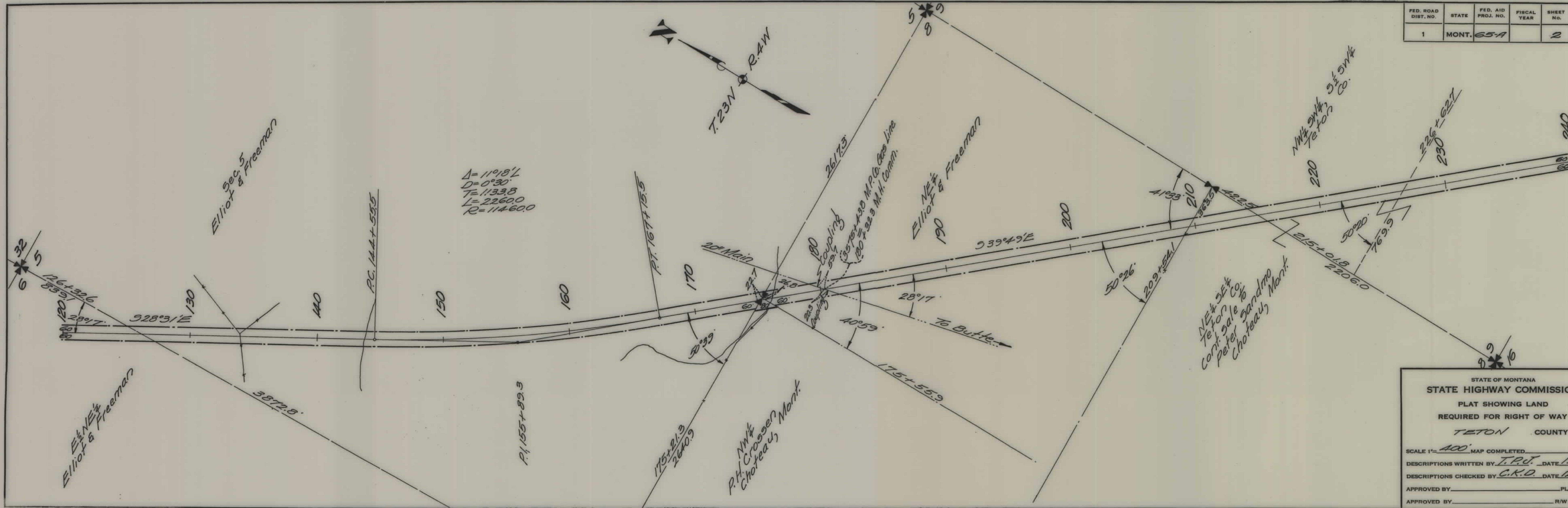
DESCRIPTIONS WRITTEN BY T.P.J. DATE 12-2-37

DESCRIPTIONS CHECKED BY C.K.D. DATE 12-2-37

APPROVED BY _____ PLANS DEPT.

APPROVED BY _____ R/W ENGINEER

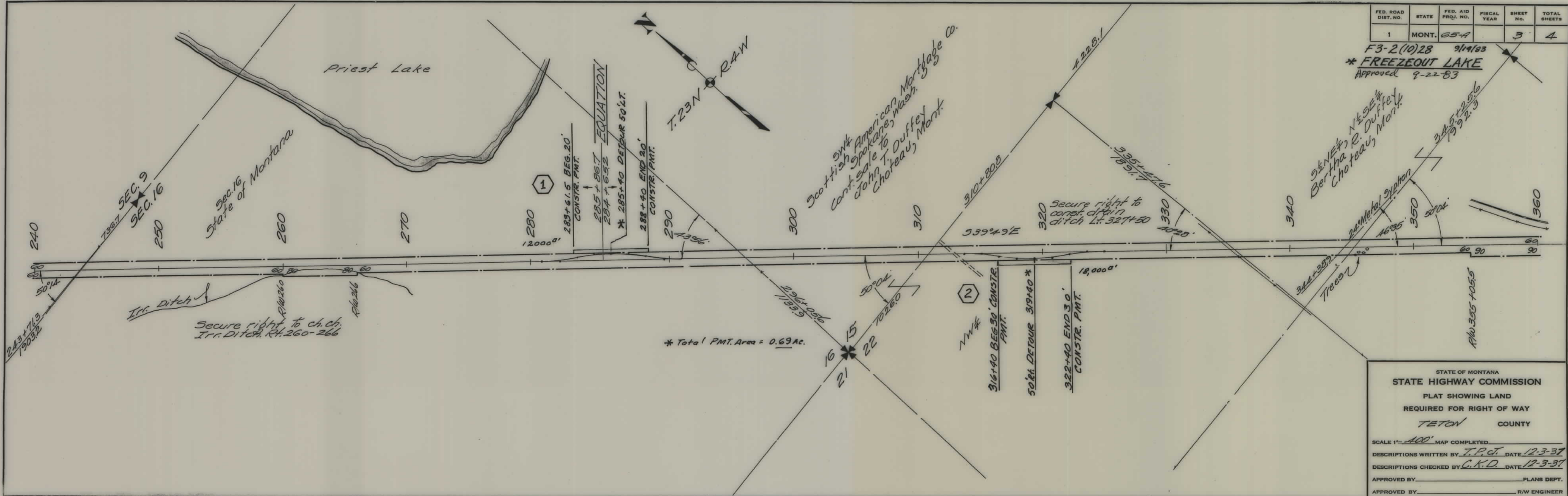
FED. ROAD DIST. NO.	STATE	FED. AID PROJ. NO.	FISCAL YEAR	SHEET NO.	TOTAL SHEETS
1	MONT.	65-A		2	4



$\Delta = 11^{\circ}18'1''$
 $D = 0^{\circ}30'$
 $T = 1133.8$
 $L = 22600$
 $R = 114600$

NE 1/4 SE 1/4
 Teton Co.
 cont. sale to
 Peter Sandmo
 Choteau, Mont.

STATE OF MONTANA
 STATE HIGHWAY COMMISSION
 PLAT SHOWING LAND
 REQUIRED FOR RIGHT OF WAY
 TETON COUNTY
 SCALE 1" = 400' MAP COMPLETED
 DESCRIPTIONS WRITTEN BY T.P.J. DATE 12-2-37
 DESCRIPTIONS CHECKED BY C.K.D. DATE 12-2-37
 APPROVED BY _____ PLANS DEPT.
 APPROVED BY _____ R/W ENGINEER



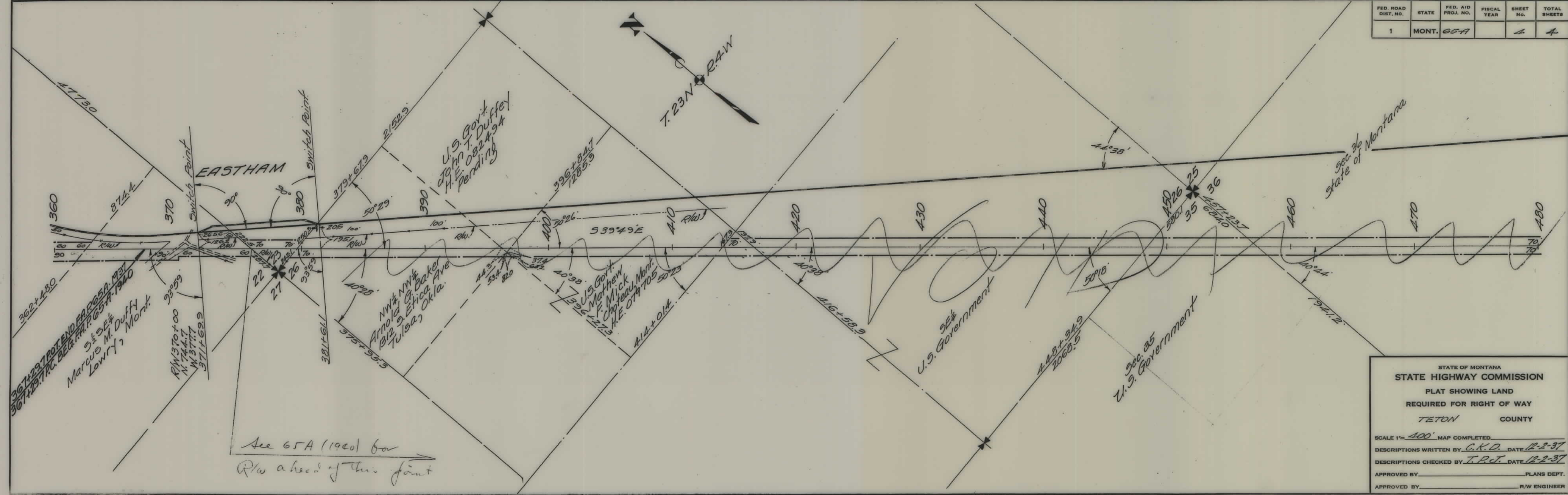
STATE OF MONTANA
 STATE HIGHWAY COMMISSION
 PLAT SHOWING LAND
 REQUIRED FOR RIGHT OF WAY
 TETON COUNTY

SCALE 1" = 100' MAP COMPLETED

DESCRIPTIONS WRITTEN BY J.P.C. DATE 12-3-37
 DESCRIPTIONS CHECKED BY C.A.D. DATE 12-3-37

APPROVED BY _____ PLANS DEPT.
 APPROVED BY _____ R/W ENGINEER

FED. ROAD DIST. NO.	STATE	FED. AID PROJ. NO.	FISCAL YEAR	SHEET NO.	TOTAL SHEETS
1	MONT.	65-A		4	4



STATE OF MONTANA
 STATE HIGHWAY COMMISSION
 PLAT SHOWING LAND
 REQUIRED FOR RIGHT OF WAY
 TETON COUNTY

SCALE 1" = 400' MAP COMPLETED _____
 DESCRIPTIONS WRITTEN BY G.K.D. DATE 12-2-37
 DESCRIPTIONS CHECKED BY T.P.T. DATE 12-2-37
 APPROVED BY _____ PLANS DEPT.
 APPROVED BY _____ R/W ENGINEER