

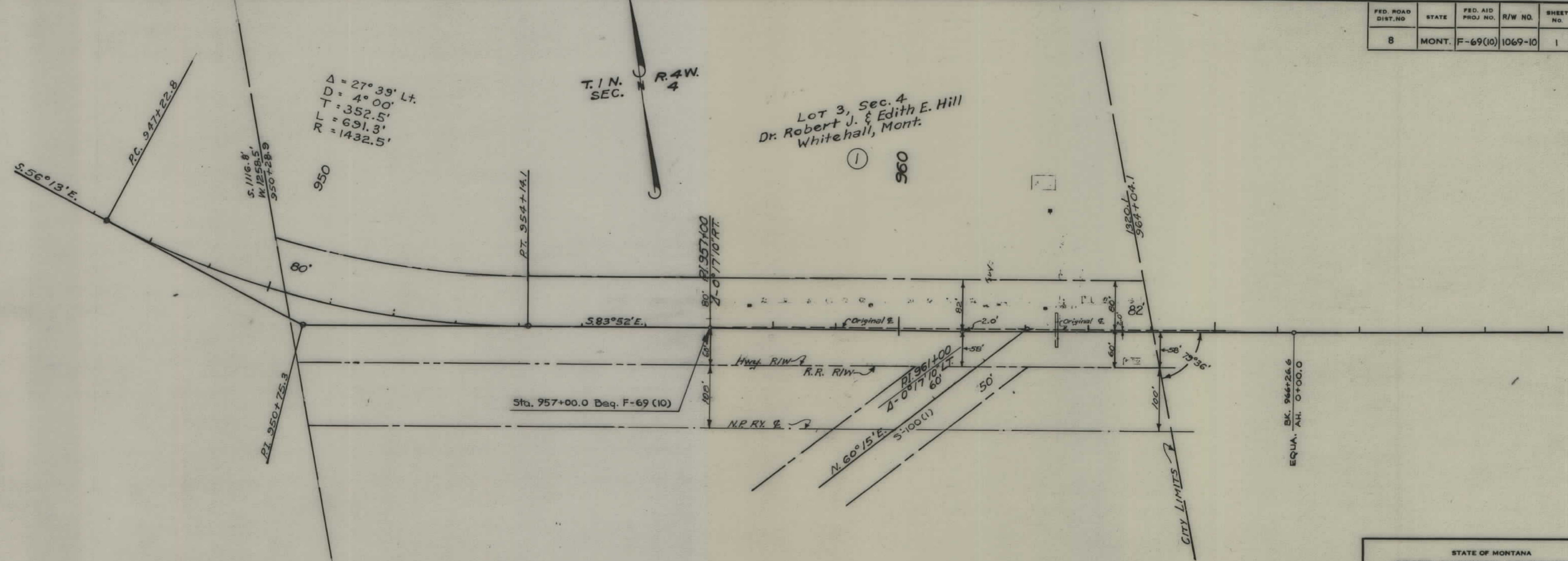
PLANS

NOT

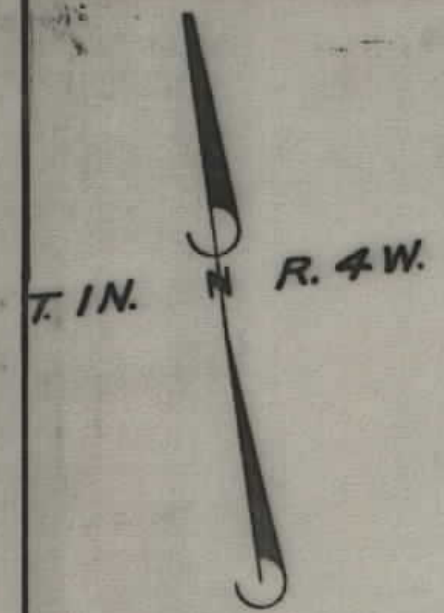
TO

SCALE

FED. ROAD DIST. NO.	STATE	FED. AID PROJ. NO.	R/W NO.	SHEET NO.	TOTAL SHEETS
8	MONT.	F-69(10)	1069-10	1	2

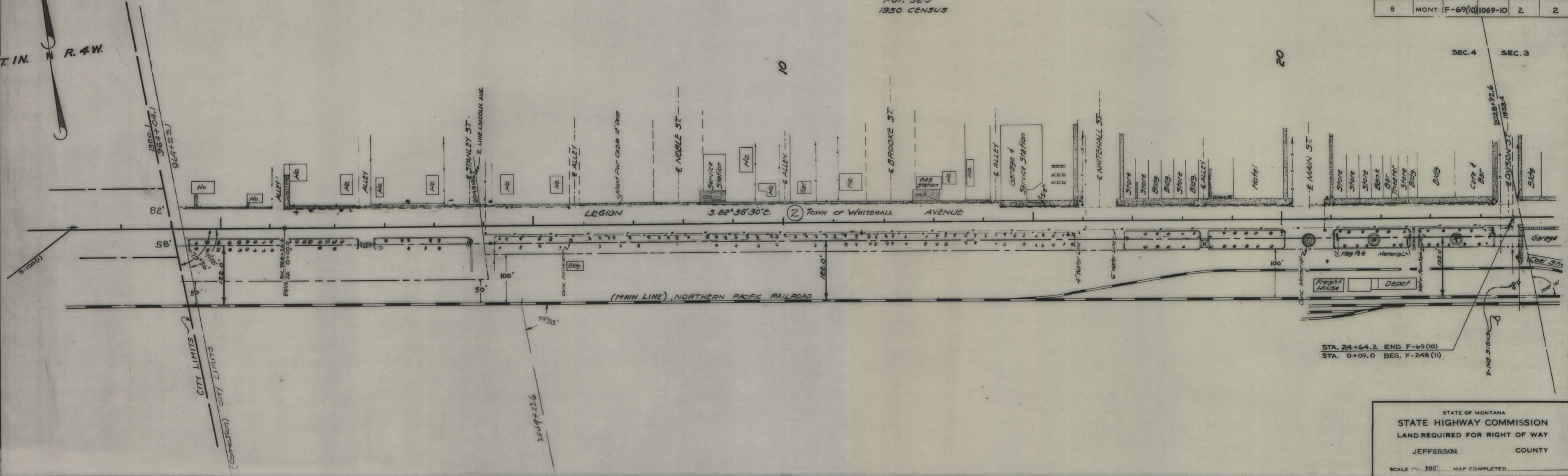


STATE OF MONTANA  
 STATE HIGHWAY COMMISSION  
 LAND REQUIRED FOR RIGHT OF WAY  
 JEFFERSON COUNTY  
 SCALE 1" = 100' MAP COMPLETED 2-26-55



WHITEHALL  
INC. CITY  
P.O.R. 929  
1950 CENSUS

FED. ROAD DIST. NO.	STATE	FED. AID PROJ. NO.	R/W NO.	SHEET NO.	TOTAL SHEETS
8	MONT.	F-69(10)	1069-10	2	2



CITY LIMITS  
(Correction) CITY LIMITS

STA. 24+64.2 END F-69(10)  
STA. 0+09.0 BEG. F-248(11)

STATE OF MONTANA  
STATE HIGHWAY COMMISSION  
LAND REQUIRED FOR RIGHT OF WAY  
JEFFERSON COUNTY  
SCALE 1" = 100' MAP COMPLETED