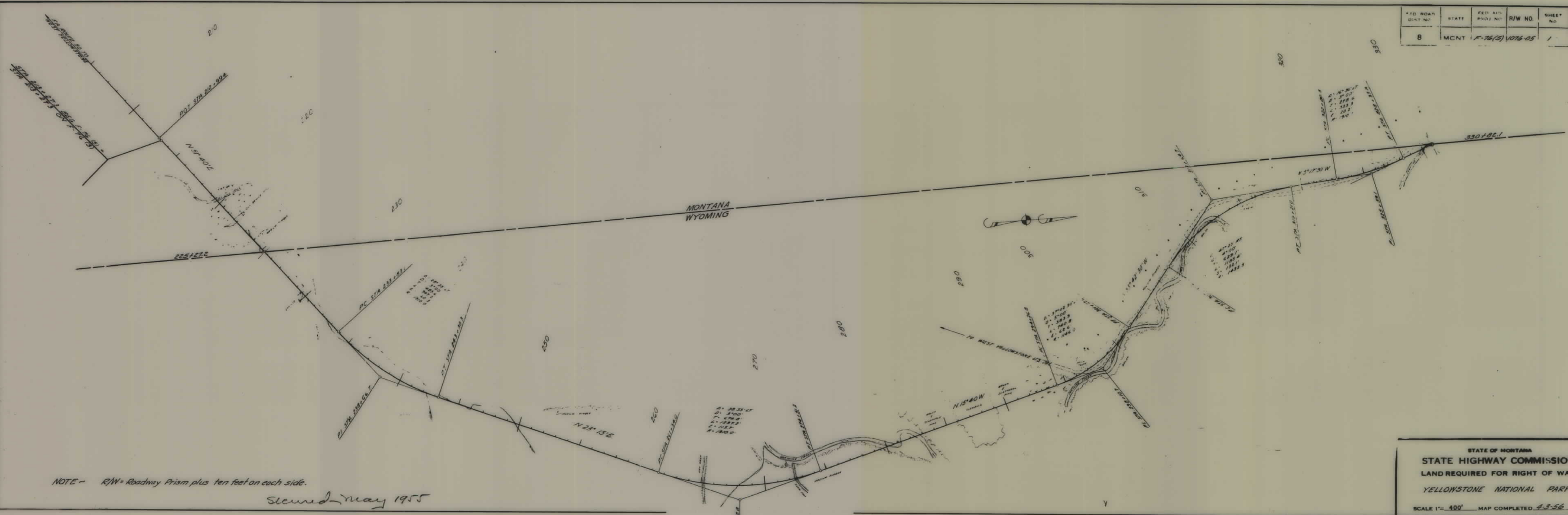


**PLANS
NOT
TO
SCALE**

FED. ROAD DIST. NO.	STATE	FED. AID PROJ. NO.	R/W NO.	SHEET NO.	TOTAL SHEETS
8	MCNT	F-76(5)	1076-05	1	3

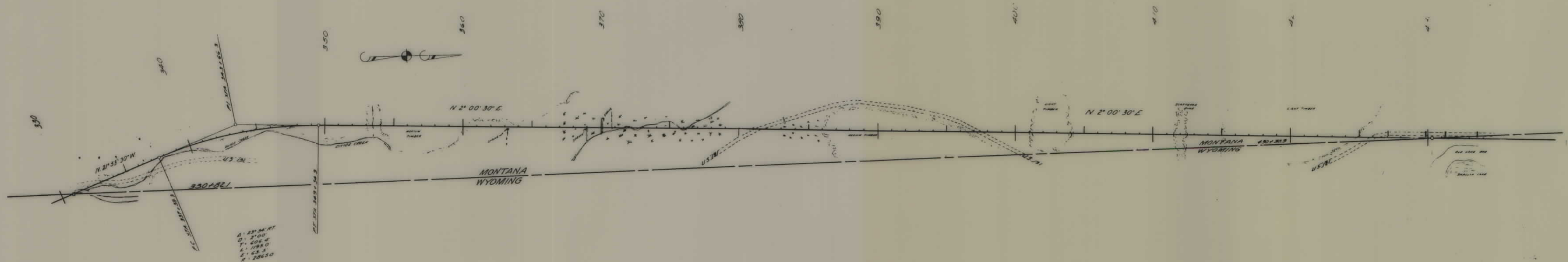


NOTE - R/W = Roadway Prism plus ten feet on each side.

skewed May 1955

STATE OF MONTANA
 STATE HIGHWAY COMMISSION
 LAND REQUIRED FOR RIGHT OF WAY
 YELLOWSTONE NATIONAL PARK.
 SCALE 1" = 400' MAP COMPLETED 4-3-56

DATE	R/W NO.	SHEET	TOTAL SHEETS
MAY 1965	F-76(3) 1076-05	2	3



NOTE - R/W = Roadway prism plus ten feet on each side.

STATE OF MONTANA
 STATE HIGHWAY COMMISSION
 LAND REQUIRED FOR RIGHT OF WAY
 YELLOWSTONE NATIONAL PARK

FED. ROAD DIST NO.	STATE	FED. AID PROJ NO.	R/W NO.	SHEET NO.	TOTAL SHEETS
8	MONT.	F-76(5)	1076-05	3	5

