

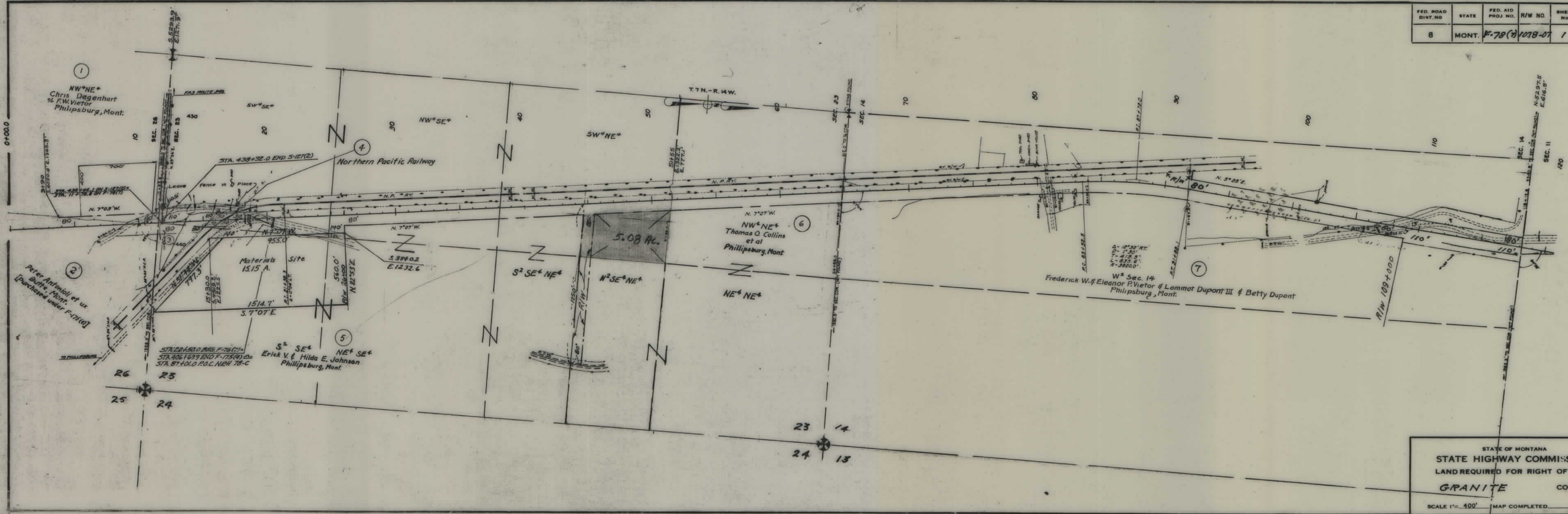
PLANS

NOT

TO

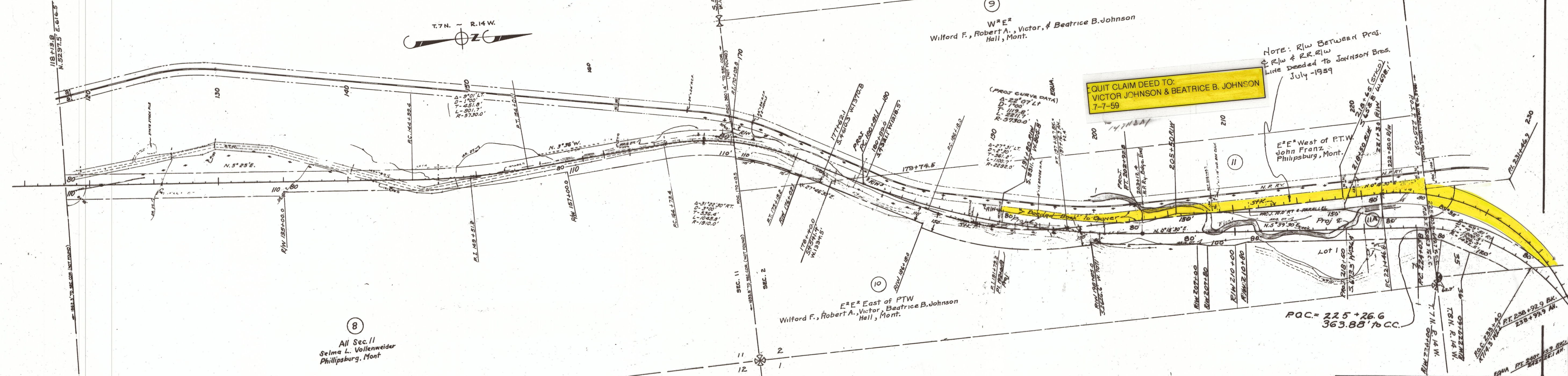
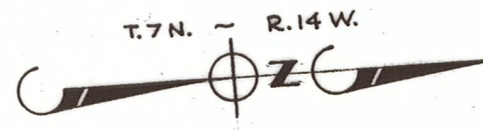
SCALE

FED. ROAD DIST. NO.	STATE	FED. AID PROJ. NO.	R/W NO.	SHEET NO.	TOTAL SHEETS
8	MONT.	F-78(2)	1078-07	1	5



STATE OF MONTANA
 STATE HIGHWAY COMMISSION
 LAND REQUIRED FOR RIGHT OF WAY
 GRANITE COUNTY
 SCALE 1" = 400' MAP COMPLETED

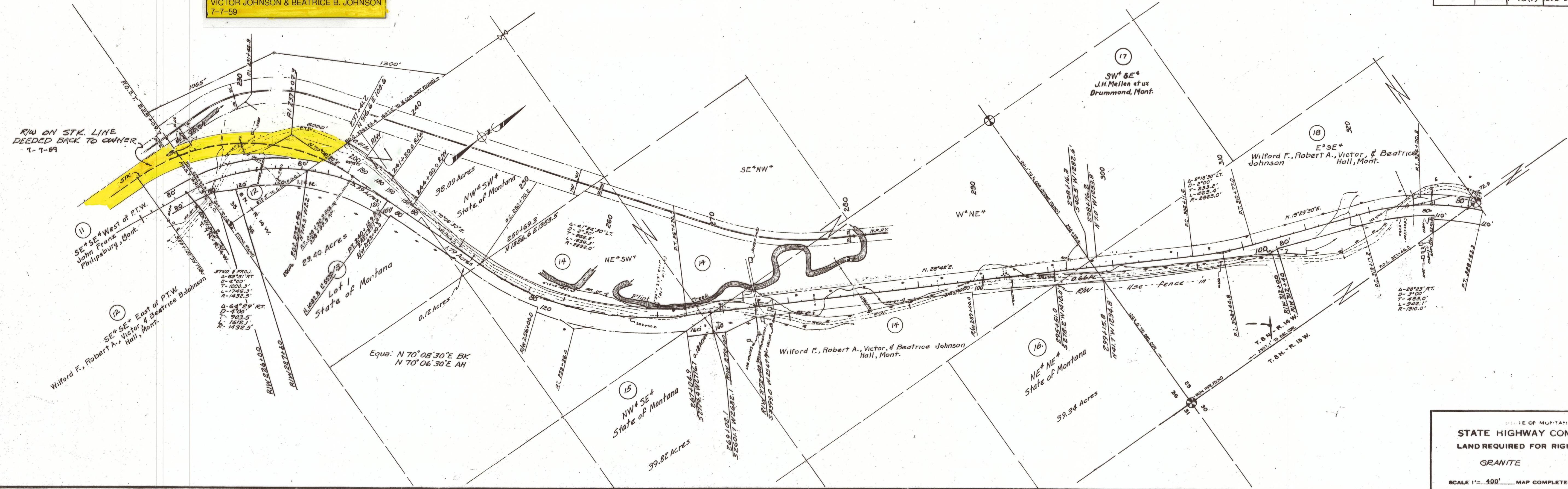
FED ROAD DIST NO	STATE	FED AID PROJ NO	R/W NO.	SHEET NO.	TOTAL SHEETS
8	MONT.	F-78(7)1078-07	2	5	



STATE OF MONTANA
 STATE HIGHWAY COMMISSION
 LAND REQUIRED FOR RIGHT OF WAY
 GRANITE COUNTY
 SCALE 1" = 400' MAP COMPLETED

QUIT CLAIM DEED TO:
 VICTOR JOHNSON & BEATRICE B. JOHNSON
 7-7-59

STATE	FED. AID PROJ. NO.	R/W NO.	SHEET NO.	TOTAL SHEETS
8 MONT.	F-78(7)	1078-07	3	5



STATE OF MONTANA
 STATE HIGHWAY COMMISSION
 LAND REQUIRED FOR RIGHT OF WAY
 GRANITE COUNTY
 SCALE 1" = 400' MAP COMPLETED

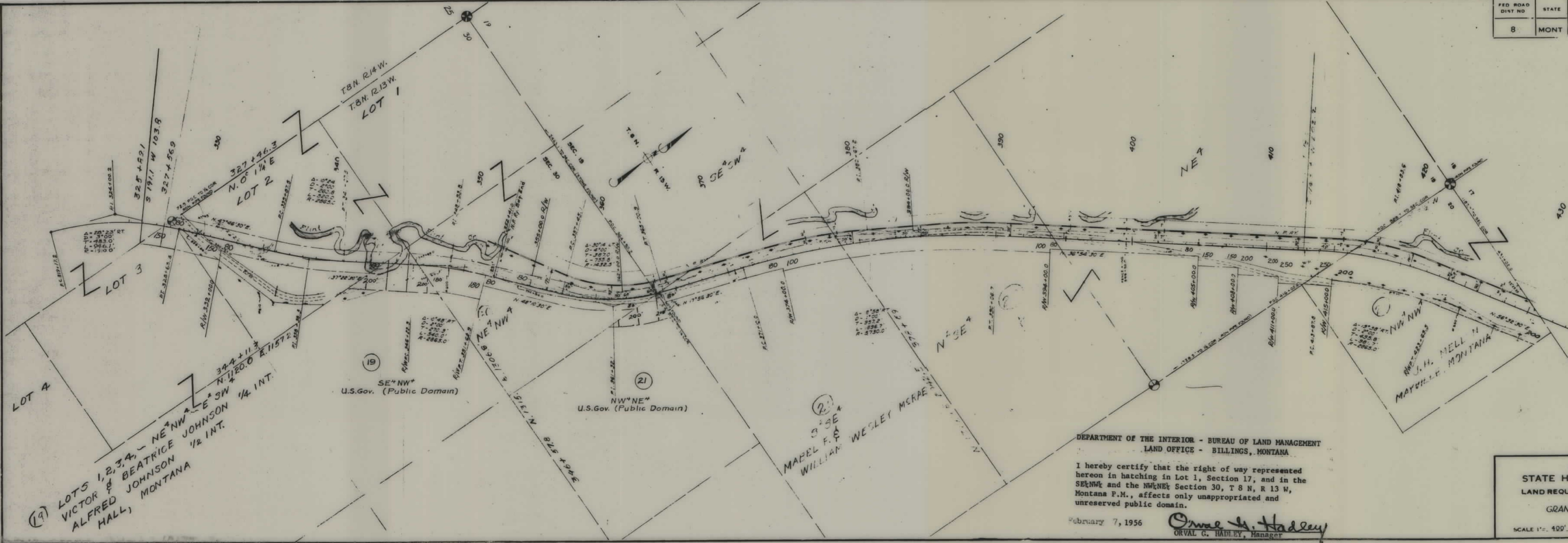
R/W Copy

FED ROAD DIST NO	STATE	FED AID PROJ NO	R/W NO.	SHEET NO	TOTAL SHEETS
8	MONT	F-72(7)	1073-07	4	5

MONTANA - 021300

Bureau of Land Management
Land Office
Billings, Montana
JAN 18 1956

Rec'd _____



(19) LOTS 1, 2, 3, 4, - NE¹/₄ NW¹/₄ - E¹/₂ SW¹/₄ + N. 1120.0 E. 1157.2
VICTOR & BEATRICE JOHNSON
ALFRED JOHNSON
HALL, MONTANA 1/2 INT.

SE¹/₄ NW¹/₄
U.S. Gov. (Public Domain)

NW¹/₄ NE¹/₄
U.S. Gov. (Public Domain)

(21)
3¹/₄ SE¹/₄
MAPLE F. &
WILLIAM WEDLEY MCKRAE

J. H. MELLER
MAYVILLE, MONTANA

DEPARTMENT OF THE INTERIOR - BUREAU OF LAND MANAGEMENT
LAND OFFICE - BILLINGS, MONTANA

I hereby certify that the right of way represented hereon in hatching in Lot 1, Section 17, and in the SE¹/₄ NW¹/₄ and the NW¹/₄ NE¹/₄ Section 30, T 8 N, R 13 W, Montana P.M., affects only unappropriated and unreserved public domain.

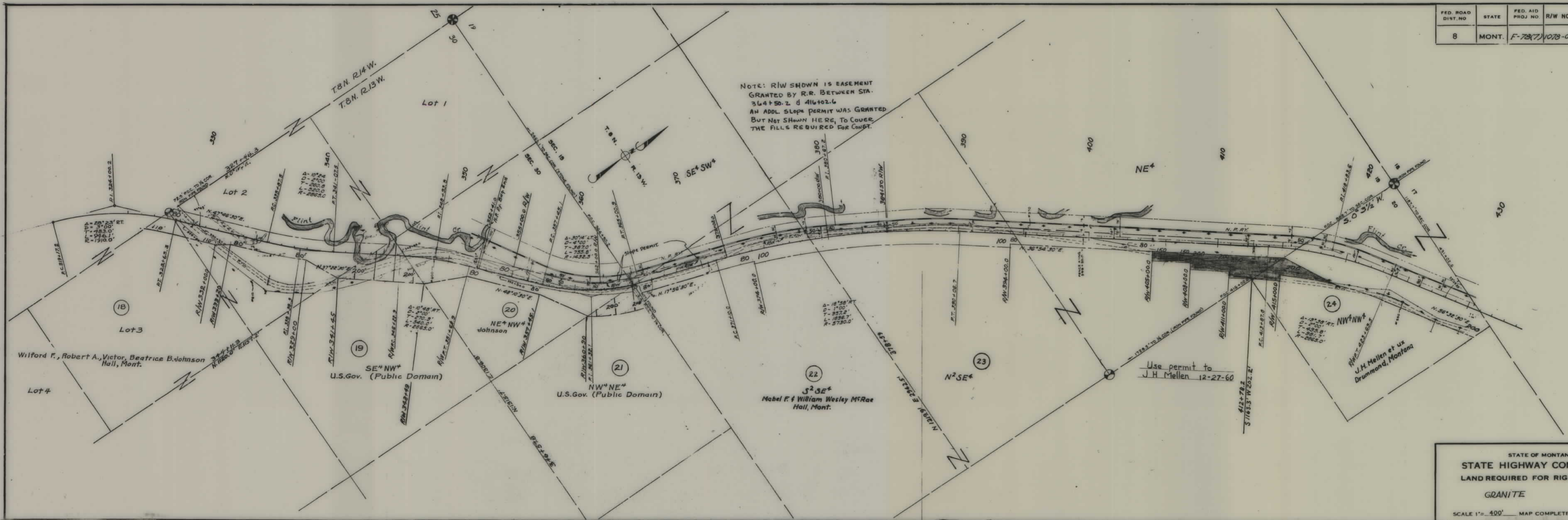
February 7, 1956

Orval G. Hadley
ORVAL G. HADLEY, Manager

STATE OF MONTANA
STATE HIGHWAY COMMISSION
LAND REQUIRED FOR RIGHT OF WAY
GRANITE COUNTY
SCALE 1" = 400' MAP COMPLETED

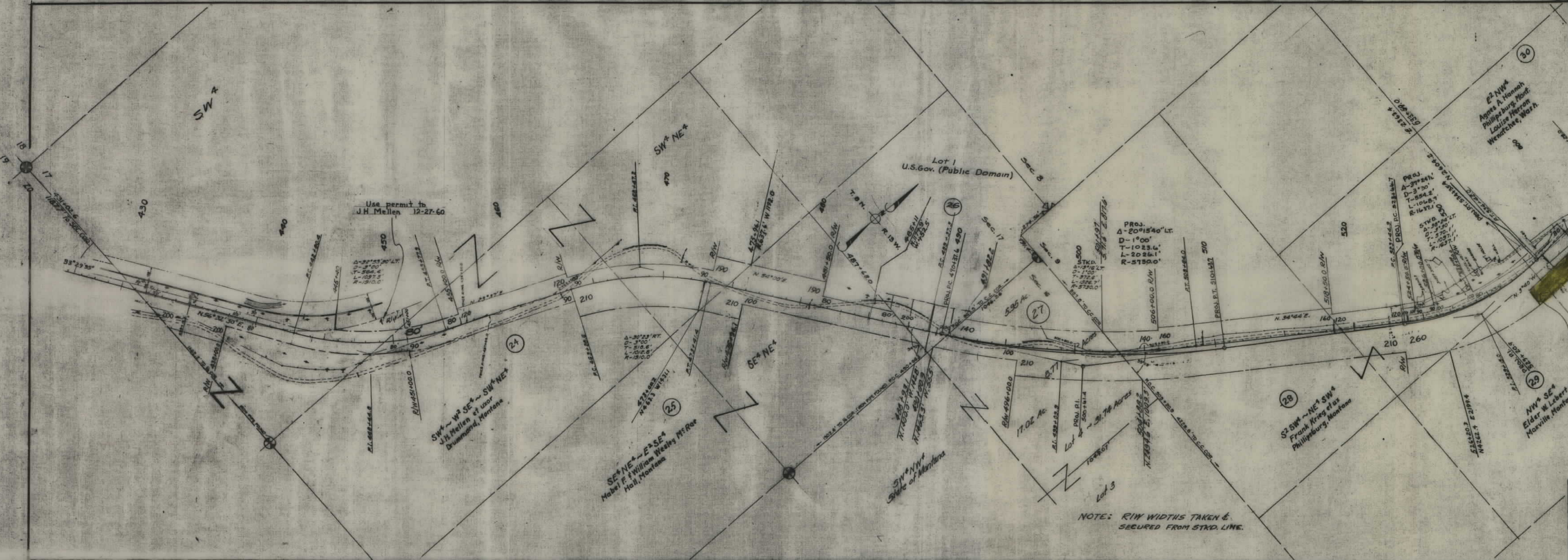
FED. ROAD DIST. NO.	STATE	FED. AID PROJ. NO.	R/W NO.	SHEET NO.	TOTAL SHEETS
8	MONT.	F-78(7)	1078-07	4	5

NOTE: R/W SHOWN IS EASEMENT GRANTED BY R.R. BETWEEN STA. 364+50.2 & 416+02.6 AN ADDL. SLOPE PERMIT WAS GRANTED BUT NOT SHOWN HERE, TO COVER THE FILLS REQUIRED FOR CONST.



STATE OF MONTANA
 STATE HIGHWAY COMMISSION
 LAND REQUIRED FOR RIGHT OF WAY
 GRANITE COUNTY
 SCALE 1" = 400' MAP COMPLETED _____

FED. ROAD DIST. NO.	STATE	FED. AID PROJ. NO.	R/W NO.	SHEET NO.	TOTAL SHEETS
8	MONT.	F-78(7)	1078-07	5	5



NOTE: R/W WIDTHS TAKEN & SECURED FROM STKD. LINE.

STATE OF MONTANA
STATE HIGHWAY COMMISSION
 LAND REQUIRED FOR RIGHT OF WAY
 GRANITE COUNTY
 SCALE 1" = 400' MAP COMPLETED