

PLANS

NOT

TO

SCALE

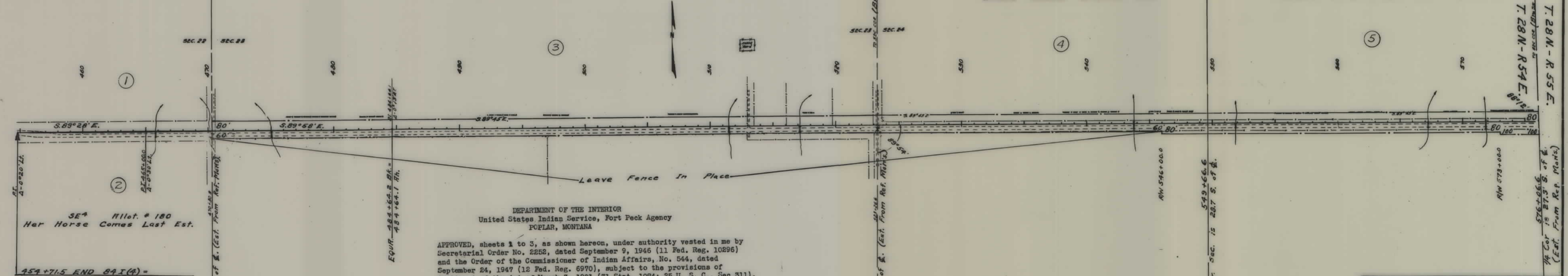
FED. ROAD DIST. NO.	STATE	FED. AID PROJ. NO.	R/W No.	SHEET NO.	TOTAL SHEETS
1	MONT.	F-84(19)	1084-19	1	4

NE⁴ Allot. # 358
Robert Goes In House Est.

All Sec. 23
Dr. C. J. Munch,
Culbertson, Montana.

W² Sec. 24 Allot. # 281.
Lizzie Chaser Counter Est.

E² Sec. 24 Allot. # 283
Medicine Bird Drums Own Pipe Est. Sec. 24



SE⁴ Allot. # 180
Her Horse Comes Last Est.

DEPARTMENT OF THE INTERIOR
United States Indian Service, Fort Peck Agency
POPLAR, MONTANA

APPROVED, sheets 1 to 3, as shown hereon, under authority vested in me by Secretarial Order No. 2252, dated September 9, 1946 (11 Fed. Reg. 10296) and the Order of the Commissioner of Indian Affairs, No. 544, dated September 24, 1947 (12 Fed. Reg. 6970), subject to the provisions of Section 4 of the Act of March 3, 1901 (31 Stat. 1084; 25 U. S. C., Sec 311).

JULY 20, 1950

E. J. Dahl
SUPERINTENDENT

STATE OF MONTANA
STATE HIGHWAY COMMISSION
PLAT SHOWING LAND
REQUIRED FOR RIGHT OF WAY
ROOSEVELT COUNTY

SCALE 1"=400' MAP COMPLETED July 1950
DESCRIPTIONS WRITTEN BY M.B. DATE 6-30-50
DESCRIPTIONS CHECKED BY J.A.P. DATE 6-30-50
APPROVED BY _____ PLANS DEPT.
APPROVED BY _____ R/W ENGINEER

T. 28 N. - R. 54 E.

1/4 Cor. is 273' S. of Q. (Est. from Ref. Mon's.)

1/4 Cor. is 219' S. of Q. (Est. from Ref. Mon's.)

T. 28 N. - R. 55 E.

Notice of Abandonment
Sta 672+50 to Sta 756
+50 dated Sept 24, 1952

FED. ROAD DIST. NO.	STATE	FED. AID PROJ. NO.	R/W No.	SHEET NO.	TOTAL SHEETS
1	MONT.	F 84 (19)	1084-19	2	4

N² Sec. 19.
Allot. # 826.
Braid Santee Est.
Poplar, Montana.

Lot 7
Allot. # 1011,
Lizzie White Bear Bauer
Poplar, Mont. Est.

Lot 9
Allot. # 1012,
Evelyn White Bear Cantrel,
Poplar, Montana.

Lot 10
Allot. # 3878
Chas. D. Martell, Jr.
Poplar, Mont. sec. 20

SW⁴
Allot. # 1018
George White Eagle Est.,
Poplar, Montana.

SE⁴
Allot. # 728
Disappearing Woman Rattling Iron Est.
Poplar, Montana.

NW⁴ SW⁴
Allot. # 728.

NE⁴ SW⁴
Allot. # 964
John Turning Est.
Poplar, Mont.

NW⁴ SE⁴
Allot. # 860.
Lillian Shields Ogle,
Poplar, Mont.

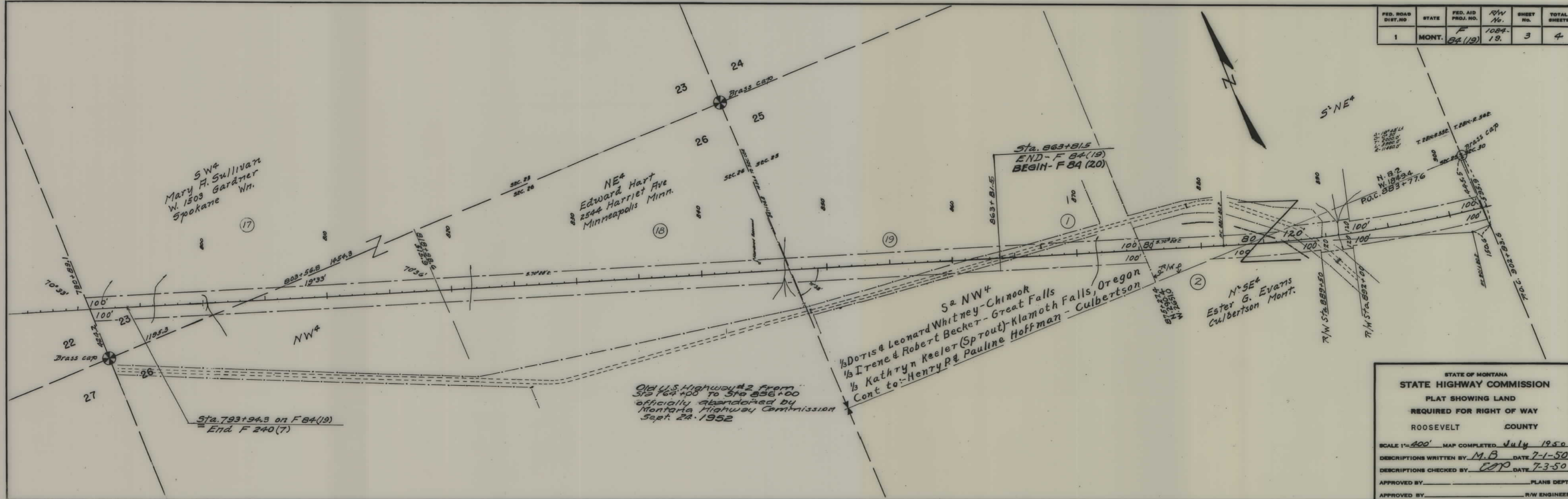
NE⁴ SE⁴
Allot. # 310.
William Eder,
Poplar, Mont.

Sta. 687+55 on F84 (19)
Req. F 240 (7)

STATE OF MONTANA
STATE HIGHWAY COMMISSION
PLAT SHOWING LAND
REQUIRED FOR RIGHT OF WAY
ROOSEVELT COUNTY

SCALE 1" = 400' MAP COMPLETED July 1950.
DESCRIPTIONS WRITTEN BY M.B. DATE 7-1-50
DESCRIPTIONS CHECKED BY E.O.P. DATE 7-3-50
APPROVED BY _____ PLANS DEPT.
APPROVED BY _____ R/W ENGINEER

FED. ROAD DIST. NO.	STATE	FED. AID PROJ. NO.	R/W No.	SHEET NO.	TOTAL SHEETS
1	MONT.	F 84(19)	1084-19	3	4

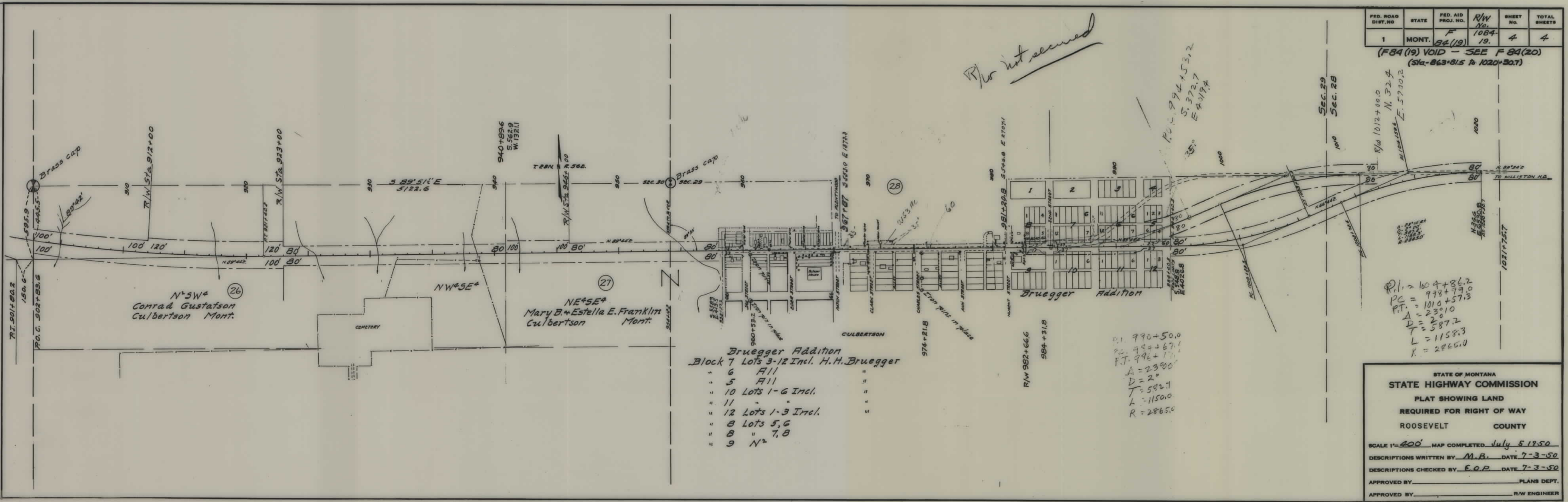


STATE OF MONTANA
STATE HIGHWAY COMMISSION
PLAT SHOWING LAND
REQUIRED FOR RIGHT OF WAY
ROOSEVELT COUNTY

SCALE 1"=400' MAP COMPLETED July 1950
DESCRIPTIONS WRITTEN BY M.B DATE 7-1-50
DESCRIPTIONS CHECKED BY EOP DATE 7-3-50
APPROVED BY _____ PLANS DEPT.
APPROVED BY _____ R/W ENGINEER

FED. ROAD DIST. NO.	STATE	FED. AID PROJ. NO.	R/W No.	SHEET No.	TOTAL SHEETS
1	MONT.	F 84(19)	1084-19.	4	4

(F84(19) VOID - SEE F 84(20)
(Sta. 863+81.5 to 1020+30.7)



R/W not secured

*P.C. 994+53.2
S. 372.7
E. 4019.4*

*P.I. = 1004+86.2
P.C. = 998+79.0
P.T. = 1010+57.3
A = 23°10'
D = 2°
T = 587.2
L = 1158.3
R = 2865.0*

- Bruegger Addition**
Block 7 Lots 3-12 Incl. H.H. Bruegger
- " 6 All
 - " 5 All
 - " 10 Lots 1-6 Incl.
 - " 11 "
 - " 12 Lots 1-3 Incl.
 - " 8 Lots 5, 6
 - " 8 " 7, 8
 - " 9 N²

*P.I. 990+50.0
P.C. 994+67.1
P.T. 996+17.1
A = 23°00'
D = 2°
T = 582.7
L = 1150.0
R = 2865.0*

STATE OF MONTANA
STATE HIGHWAY COMMISSION
PLAT SHOWING LAND
REQUIRED FOR RIGHT OF WAY
ROOSEVELT COUNTY

SCALE 1"=400' MAP COMPLETED July 5 1950
DESCRIPTIONS WRITTEN BY M.B. DATE 7-3-50
DESCRIPTIONS CHECKED BY E.O.P. DATE 7-3-50
APPROVED BY _____ PLANS DEPT.
APPROVED BY _____ R/W ENGINEER