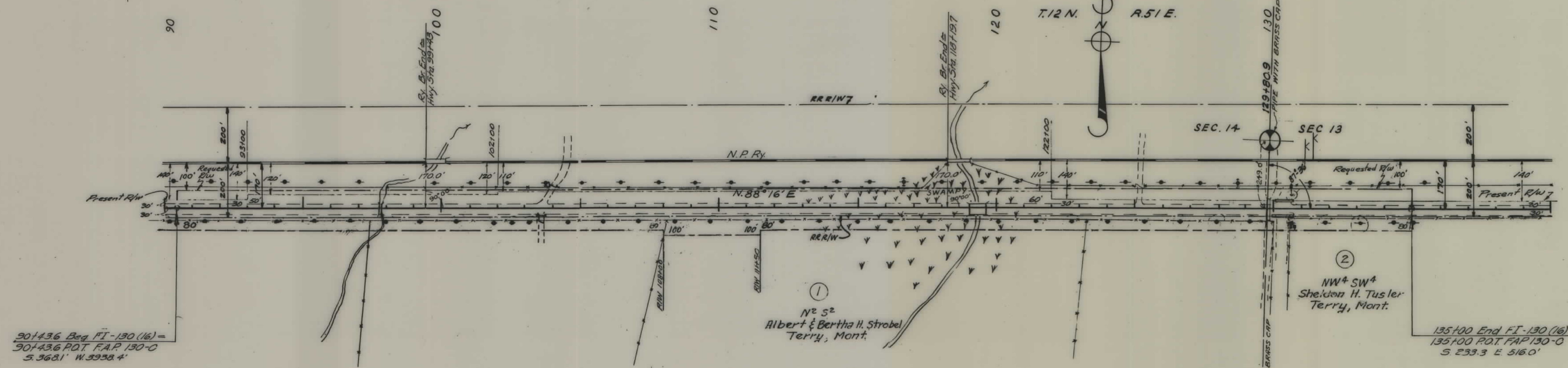


PLANS
NOT
TO
SCALE

FED. ROAD DIST. NO.	STATE	FED. AID PROJ. NO.	R/W NO.	SHEET NO.	TOTAL SHEETS
8	MONT.	FI-130(16)	2130-16	1	1

Construction Contract Awarded April 27, 1954



90+43.6 Beg. FI-130(16) =
90+43.6 P.O.T. F.A.P. 130-0
S. 368.1' W. 3938.4'

135+00 End FI-130(16) =
135+00 P.O.T. F.A.P. 130-0
S. 233.3' E. 516.0'

STATE OF MONTANA
STATE HIGHWAY COMMISSION
LAND REQUIRED FOR RIGHT OF WAY
PRAIRIE COUNTY
SCALE 1" = 200' MAP COMPLETED