

PLANS

NOT

TO

SCALE

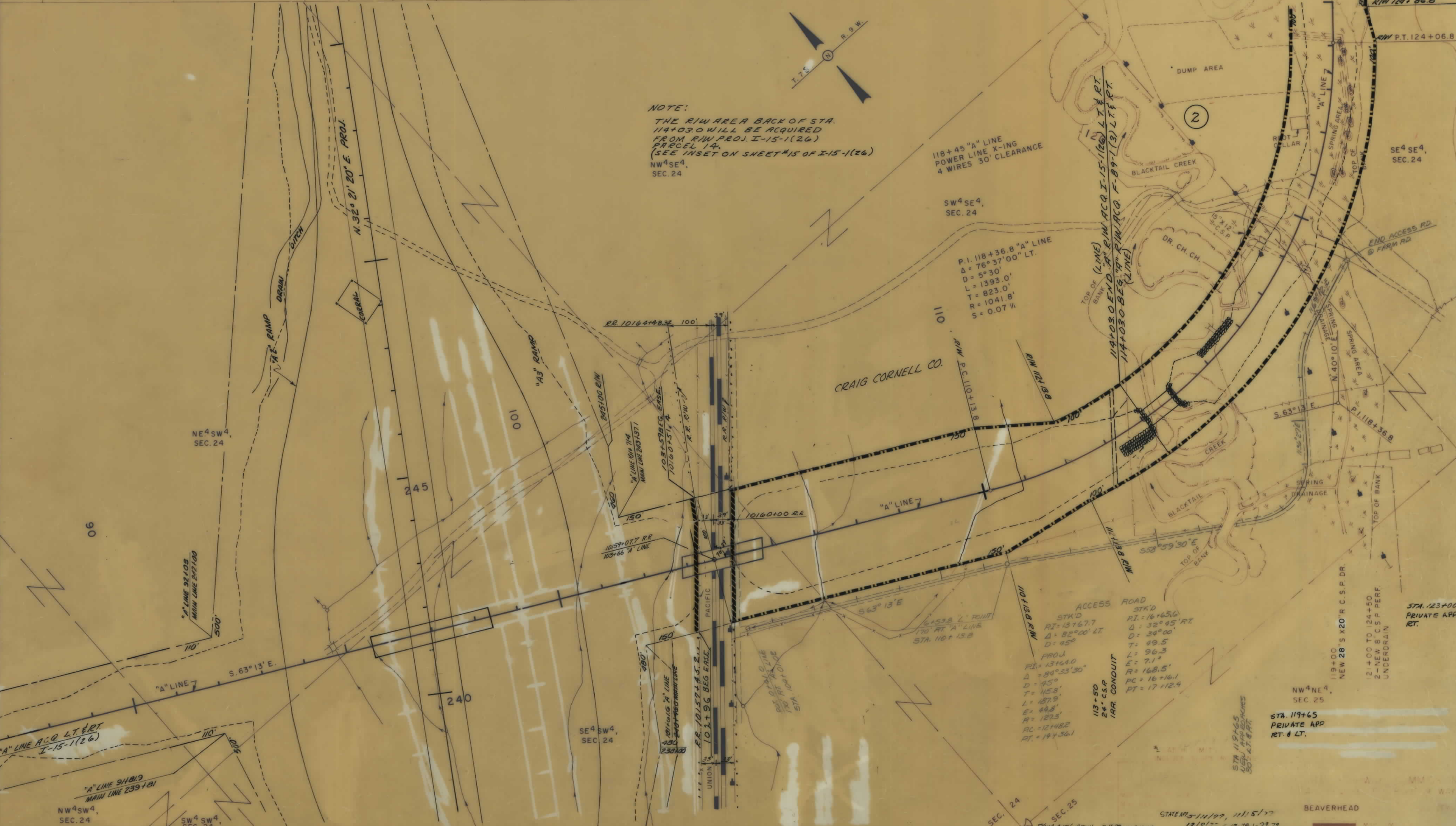






OWNERSHIPS

PARCEL	NAME	ADDRESS	TOTAL ACREAGE	GROSS TAKE ACREAGE	PTW ACREAGE	NET TAKE ACREAGE	REMAINDER		CH CH ACREAGE	
							LEFT	RIGHT	LEFT	RIGHT
1	DELETED									
2	CRAIG CORNELL CO.		SEE SHEET		3					



NOTE:  
 THE R.I.W. AREA BACK OF STA.  
 114+03.0 WILL BE ACQUIRED  
 FROM R.I.W. PROJ. I-15-1(26)  
 PARCEL 14.  
 (SEE INSET ON SHEET #15 OF I-15-1(26))  
 NW<sup>4</sup> SE<sup>4</sup>,  
 SEC. 24

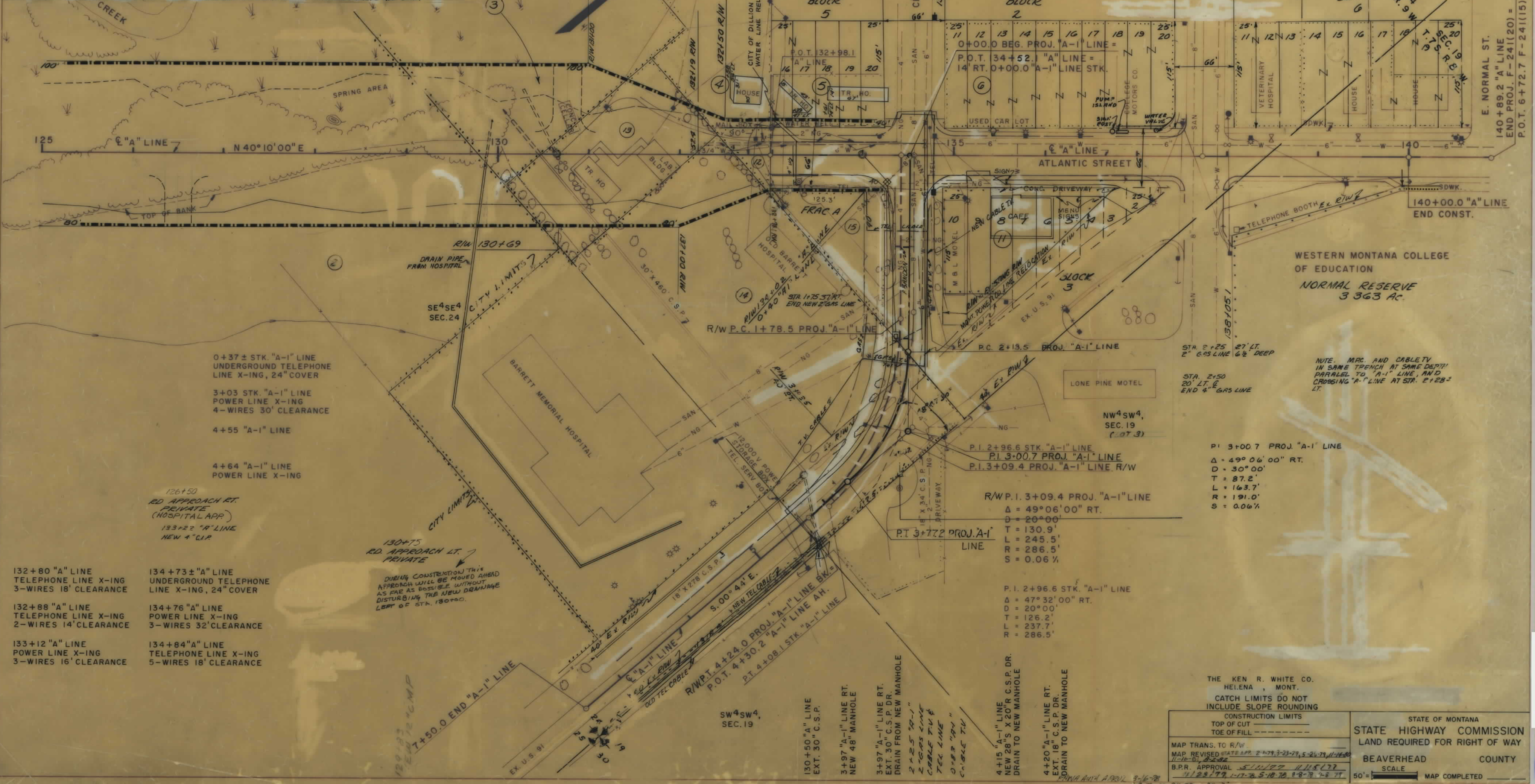
ACCESS ROAD  
 STR'D  
 P.I. = 16+45.0  
 Δ = 32° 45' RT  
 D = 30° 00'  
 T = 49.5  
 L = 96.3  
 E = 7.1'  
 R = 168.5'  
 PC = 16+16.1  
 PT = 17+12.4

IRR CONDUIT  
 113+50  
 24' C.S.P.



OWNERSHIPS										
PARCEL	NAME	ADDRESS	TOTAL ACREAGE	GROSS TAKE ACREAGE	P.T.W. ACREAGE	NET TAKE ACREAGE	REMAINDER		LEFT	RIGHT
							LEFT	RIGHT		
2	CRAIG CORNELL CO.		2584.6	6.8		6.8	34.95	25.28		
3	BEAVERHEAD CO.		4.8	0.4		0.4				
4	M. LOREN RICHARDS	% KERRIT J. LAWVER-DILLON	13,665	837		837	12,231			
5	RAYMOND D. WEBSTER		7,187.5	30 FT x 1250		1250 x 30 FT	937.5			
6	COLLEGE MOTORS, INC.		28750	30 FT x 250		250 x 30 FT				
7	DELETED									
8	DELETED									
9	DELETED									
10	DELETED									
11	LOUIS & MILDRED DRINDAHL	% KEITH P. TAYLOR	14915.5							
12	CITY OF DILLON		2232	2232		2232				
13	BEAVERHEAD LABORATORY FOUNDATION		23,100	20,819		20,819	892.5	1387.5		
14	BEAVERHEAD CO. (OLD BARRETT HOSPITAL)		173,943	30,771	17,775	12,996		143,172		
15	BARRETT HOSPITAL ASSOCIATION		9,398	3,201		3,201		6,197		
16	DELETED									

FED. ROAD DIV. NO.	STATE	F.A.D. NOS. CONST. NO.	R/W NO.	STATE NO.	SHEET NO.	TOTAL SHEETS
8	MONT.	F 69-1(3)			3	3



0+37 ± STK. "A-1" LINE  
UNDERGROUND TELEPHONE  
LINE X-ING, 24" COVER

3+03 STK. "A-1" LINE  
POWER LINE X-ING  
4-WIRES 30' CLEARANCE

4+55 "A-1" LINE

4+64 "A-1" LINE  
POWER LINE X-ING

132+80 "A" LINE  
TELEPHONE LINE X-ING  
3-WIRES 18' CLEARANCE

132+88 "A" LINE  
TELEPHONE LINE X-ING  
2-WIRES 14' CLEARANCE

133+12 "A" LINE  
POWER LINE X-ING  
3-WIRES 16' CLEARANCE

134+73 ± "A" LINE  
UNDERGROUND TELEPHONE  
LINE X-ING, 24" COVER

134+76 "A" LINE  
POWER LINE X-ING  
3-WIRES 32' CLEARANCE

134+84 "A" LINE  
TELEPHONE LINE X-ING  
5-WIRES 18' CLEARANCE

R/W.P.I. 3+09.4 PROJ. "A-1" LINE  
Δ = 49°06'00" RT.  
D = 20'00"  
T = 130.9'  
L = 245.5'  
R = 286.5'  
S = 0.06%

P.I. 2+96.6 STK. "A-1" LINE  
Δ = 47°32'00" RT.  
D = 20'00"  
T = 126.2'  
L = 237.7'  
R = 286.5'

P.I. 3+00.7 PROJ. "A-1" LINE  
Δ = 49°06'00" RT.  
D = 30'00"  
T = 87.2'  
L = 163.7'  
R = 191.0'  
S = 0.06%

THE KEN R. WHITE CO.  
HELENA, MONT.  
CATCH LIMITS DO NOT  
INCLUDE SLOPE ROUNDING

MAP TRANS. TO R/W MAP REVISED STATE APP. 2-79, 3-23-79, 5-24-79, 11-16-80 11-16-81, 8-2-82 B.P.R. APPROVAL 5/11/79 11/18/79 4/23/79, 1-17-80, 5-18-80, 8-8-80, 7-8-81	STATE OF MONTANA HIGHWAY COMMISSION LAND REQUIRED FOR RIGHT OF WAY BEAVERHEAD COUNTY SCALE MAP COMPLETED
---	---