

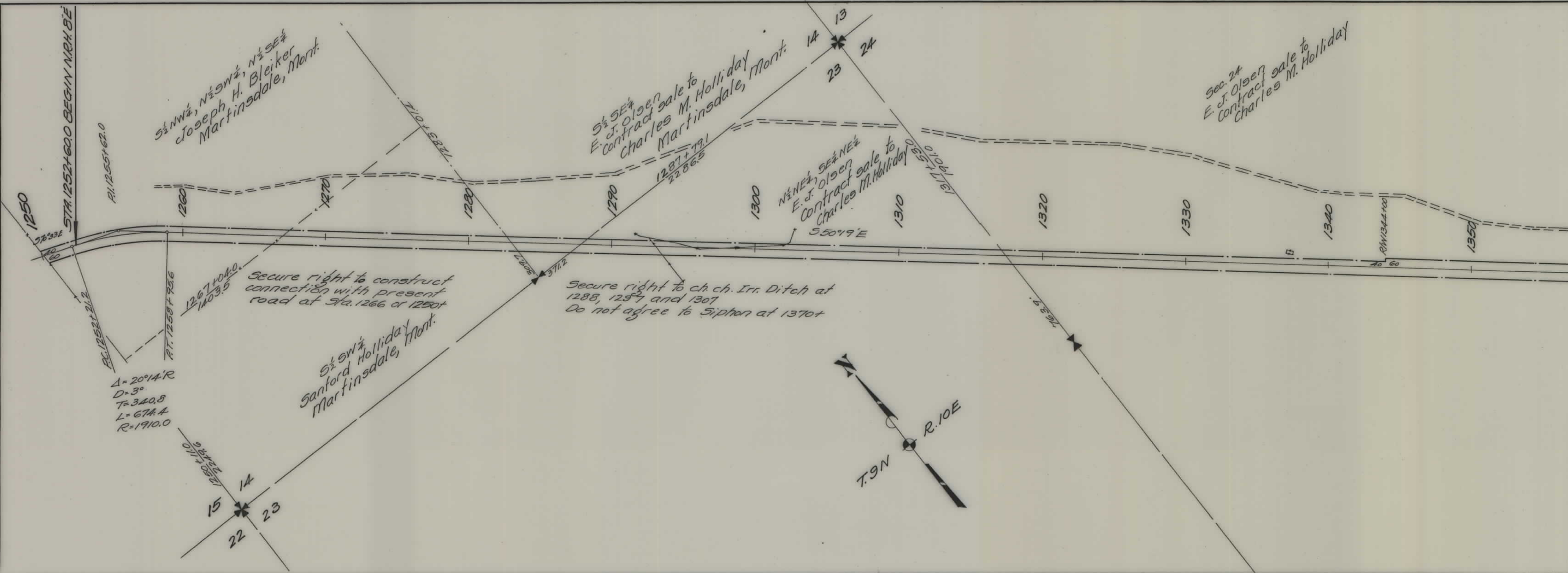
PLANS

NOT

TO

SCALE

FED. ROAD DIST. NO.	STATE	FED. AID PROJ. NO.	FISCAL YEAR	SHEET NO.	TOTAL SHEETS
1	MONT.	8E		1	3



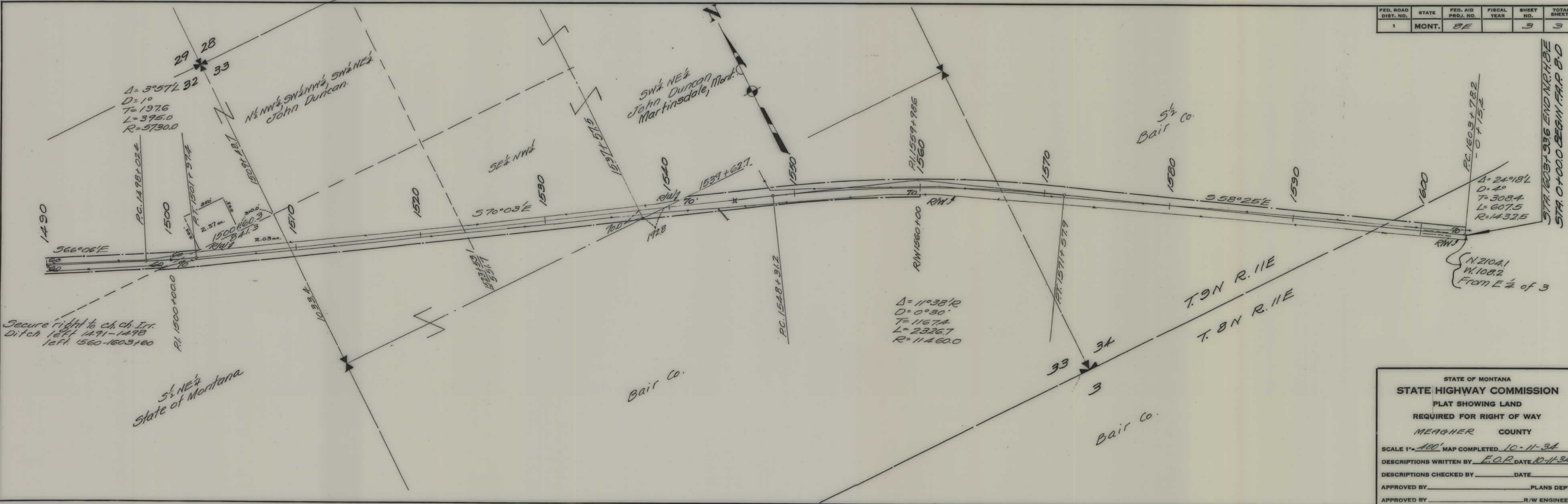
Secure right to construct connection with present road at Sta. 1266 or 1250+

Secure right to ch. ch. Irr. Ditch at 1288, 1297 and 1307
Do not agree to Siphon at 1370+

$\Delta = 20^{\circ}14'R$
 $D = 3^{\circ}$
 $T = 340.8$
 $L = 674.4$
 $R = 1710.0$

STATE OF MONTANA
STATE HIGHWAY COMMISSION
 PLAT SHOWING LAND
 REQUIRED FOR RIGHT OF WAY
 MEAGHER COUNTY
 SCALE 1" = 400' MAP COMPLETED 10-11-34
 DESCRIPTIONS WRITTEN BY E.O.P. DATE 10-11-34
 DESCRIPTIONS CHECKED BY _____ DATE _____
 APPROVED BY _____ PLANS DEPT.
 APPROVED BY _____ R/W ENGINEER

FED. ROAD DIST. NO.	STATE	FED. AID PROJ. NO.	FISCAL YEAR	SHEET NO.	TOTAL SHEETS
1	MONT.	8E		3	3



STATE OF MONTANA
 STATE HIGHWAY COMMISSION
 PLAT SHOWING LAND
 REQUIRED FOR RIGHT OF WAY
 MEAGHER COUNTY

SCALE 1" = 100' MAP COMPLETED 10-11-34
 DESCRIPTIONS WRITTEN BY E.O.P. DATE 10-11-34
 DESCRIPTIONS CHECKED BY _____ DATE _____
 APPROVED BY _____ PLANS DEPT.
 APPROVED BY _____ R/W ENGINEER