

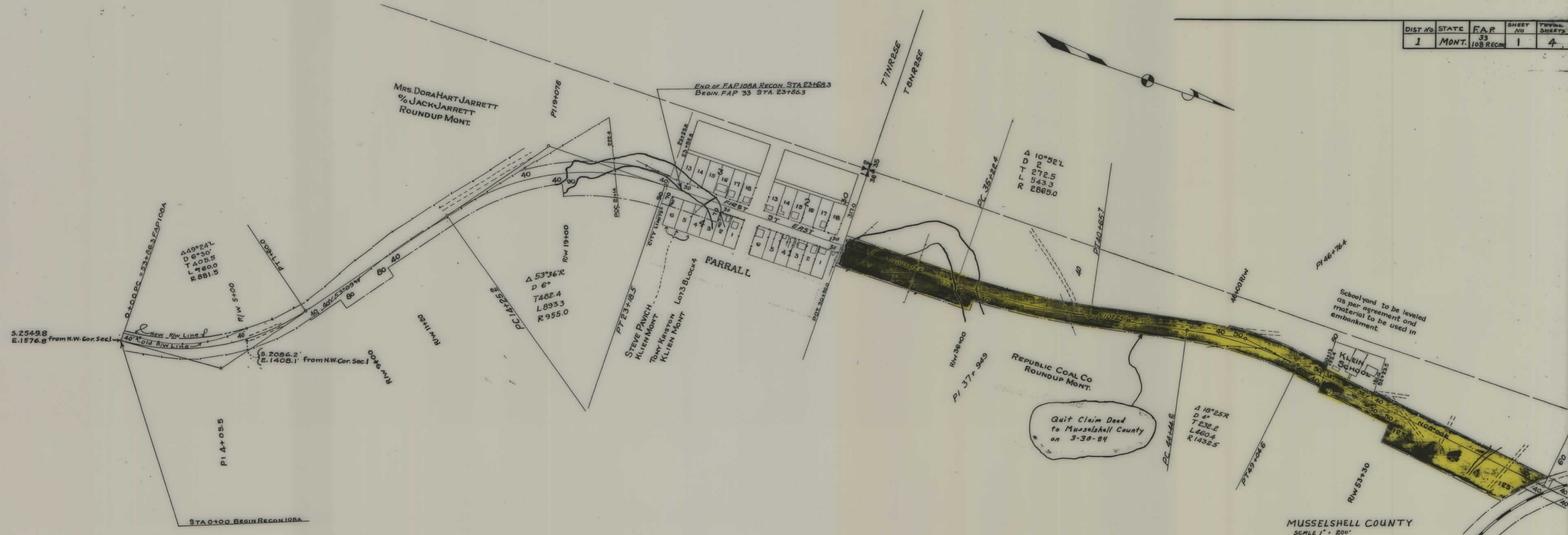
PLANS

NOT

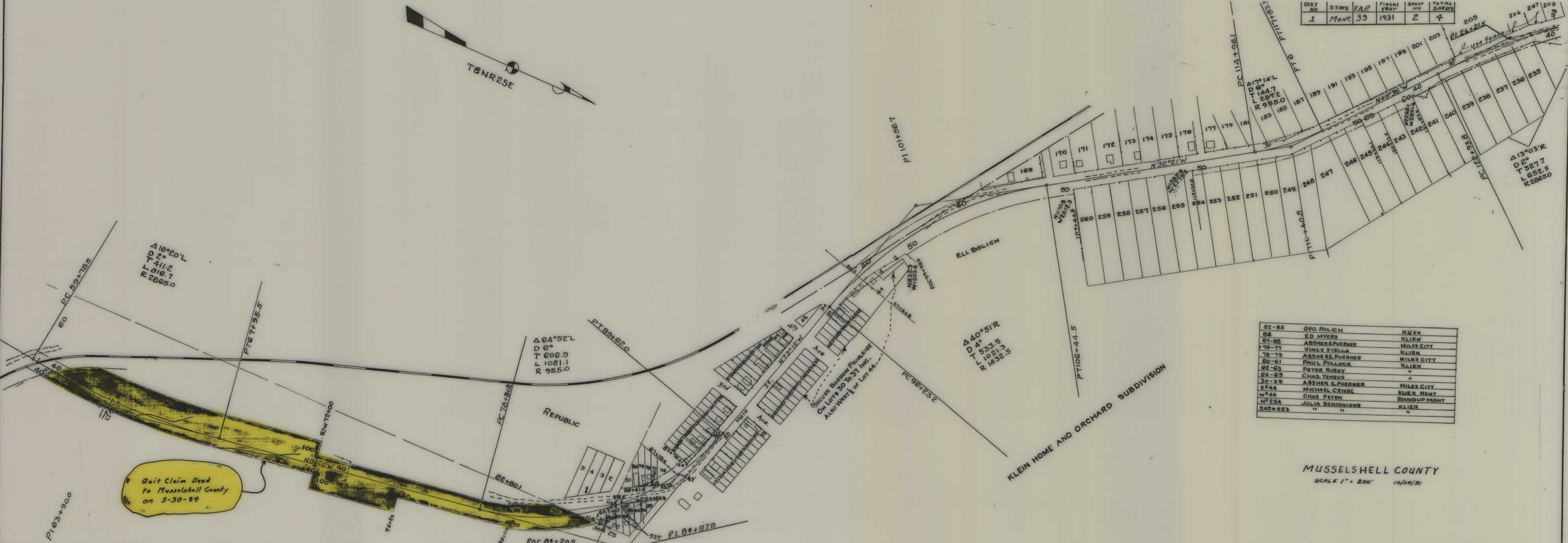
TO

SCALE

DIST NO	STATE	F.A.P.	SHEET NO	TOTAL SHEETS
1	MONT.	33 100 RECON	1	4



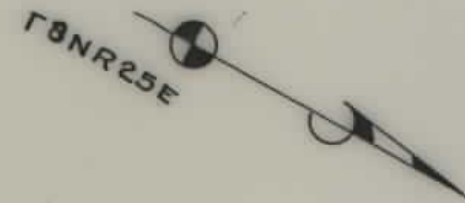
DIST NO	STATE	F.A.P.	FISCAL YEAR	SHEET NO	TOTAL SHEETS
1	MONT.	33	1931	2	4



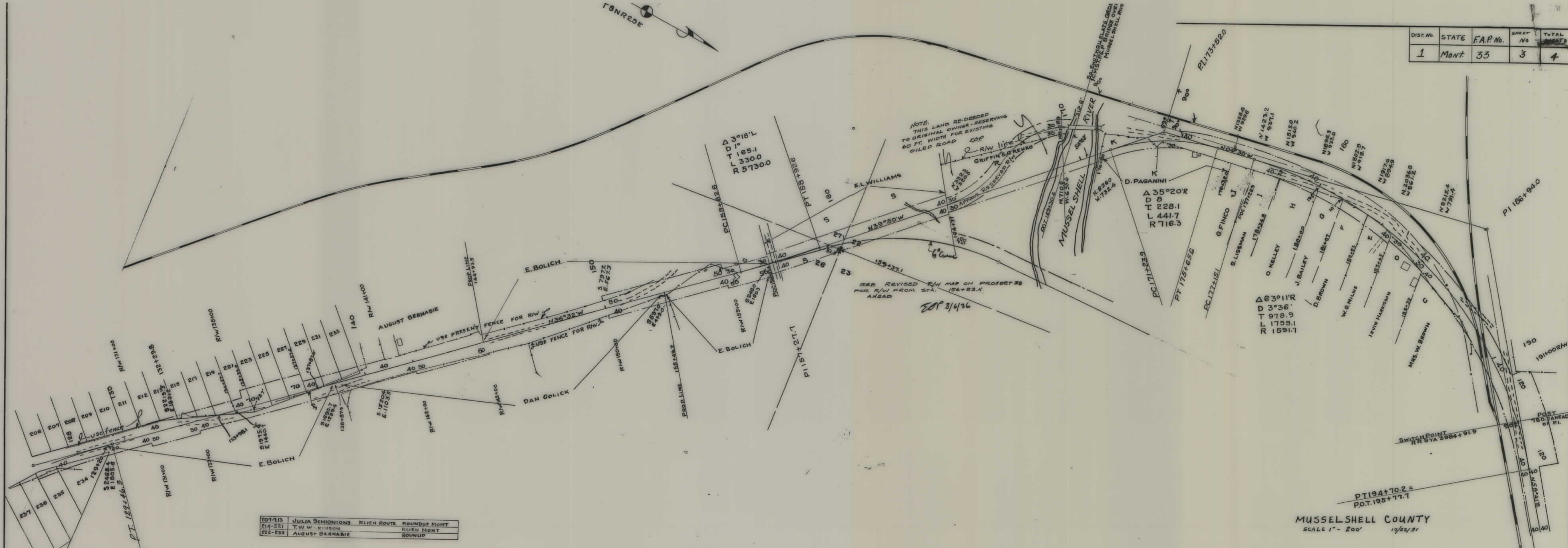
62-85	GEO. POLICH	KLIEN
86	ED MYERS	KLIEN
87-88	ABSHER & PUERNER	MILES CITY
76-77	VINCE STELLA	KLIEN
78-79	ABSHER & PUERNER	MILES CITY
60-61	PAUL POLLOCK	KLIEN
62-63	PETER RUSKY	"
64-65	CHAS. YENSUS	"
30-39	ABSHER & PUERNER	MILES CITY
82-84	MICHAEL CRIVEC	KLIEN MONT
85-86	CHAS. PETER	ROUNDUP MONT
87-88	JULIA SCHIONIGS	KLIEN
89-90	"	"

MUSSELSHELL COUNTY
SCALE 1" = 200' 10/24/31

Quit Claim Deed to Musselshell County on 3-30-84



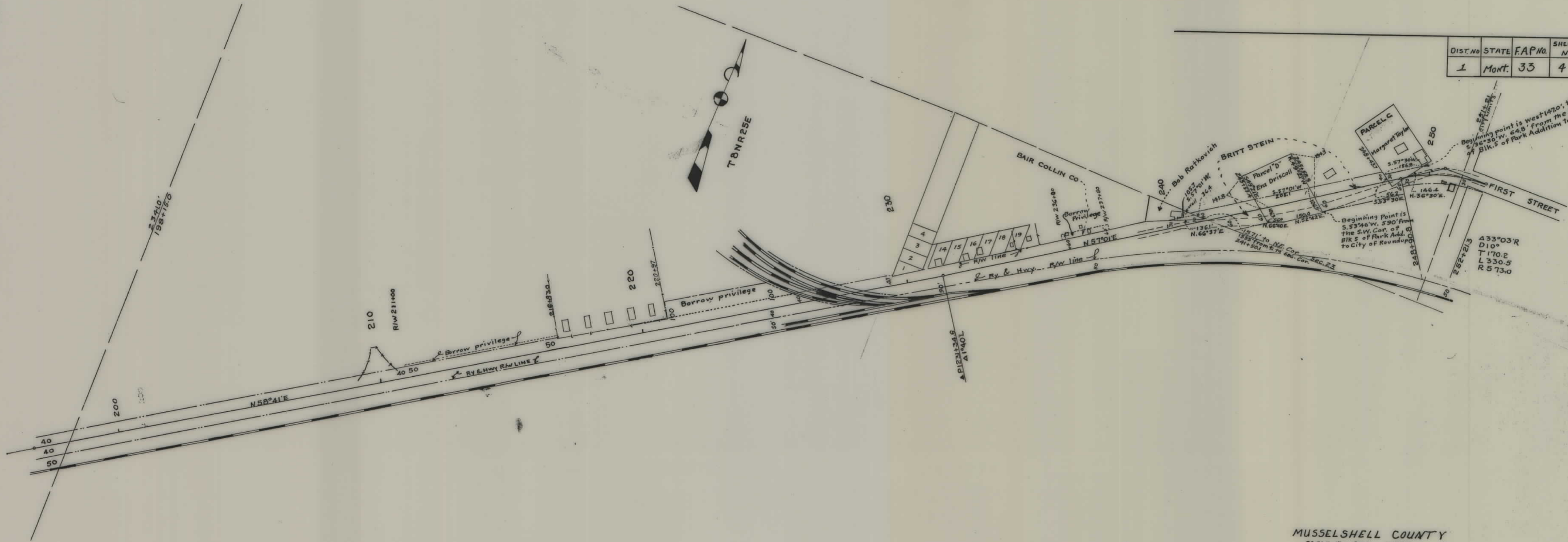
DIST. No.	STATE	F.A.P. No.	SHEET No.	TOTAL SHEETS
1	MONT.	33	3	4



207-213	JULIA SCHIONINGS	KLIEN ROUTE	ROUNDUP MONT.
214-221	T.W.W. WILSON	KLIEN MONT.	
222-233	AUGUST BERNABE	ROUNDUP	

MUSSEL SHELL COUNTY
SCALE 1" = 200'
10/22/31

DIST. NO.	STATE	F.A.P. No.	SHEET NO.	TOTAL SHEETS
1	Mont.	33	4	4



MUSSELHELL COUNTY
SCALE 1" = 200' 10/23/21