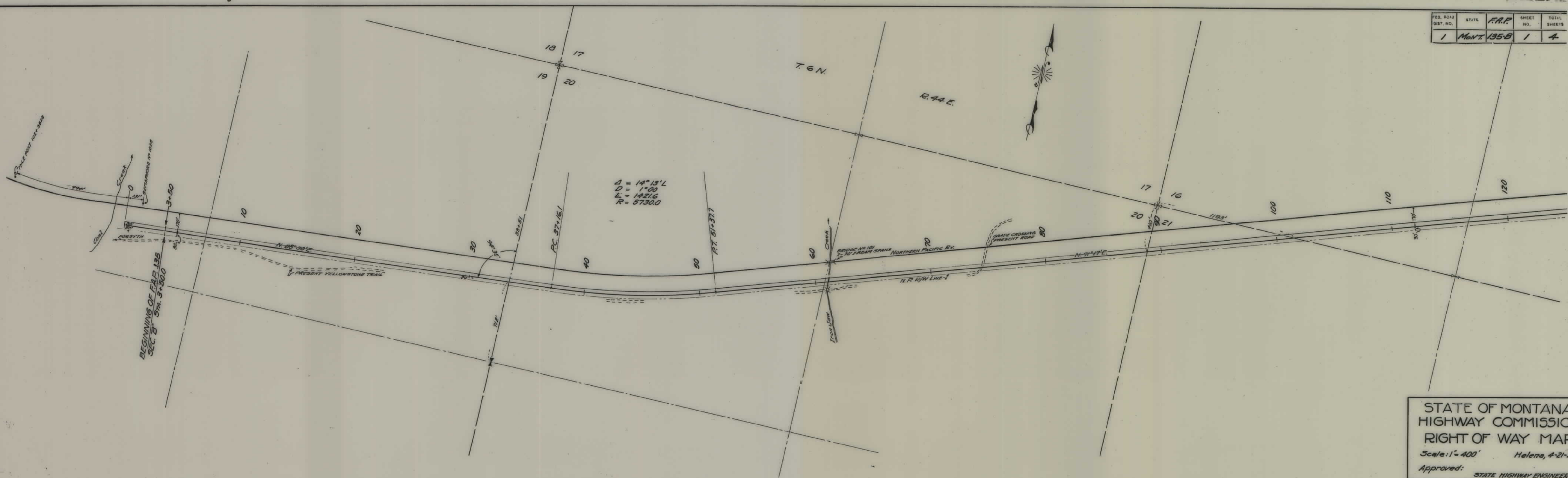


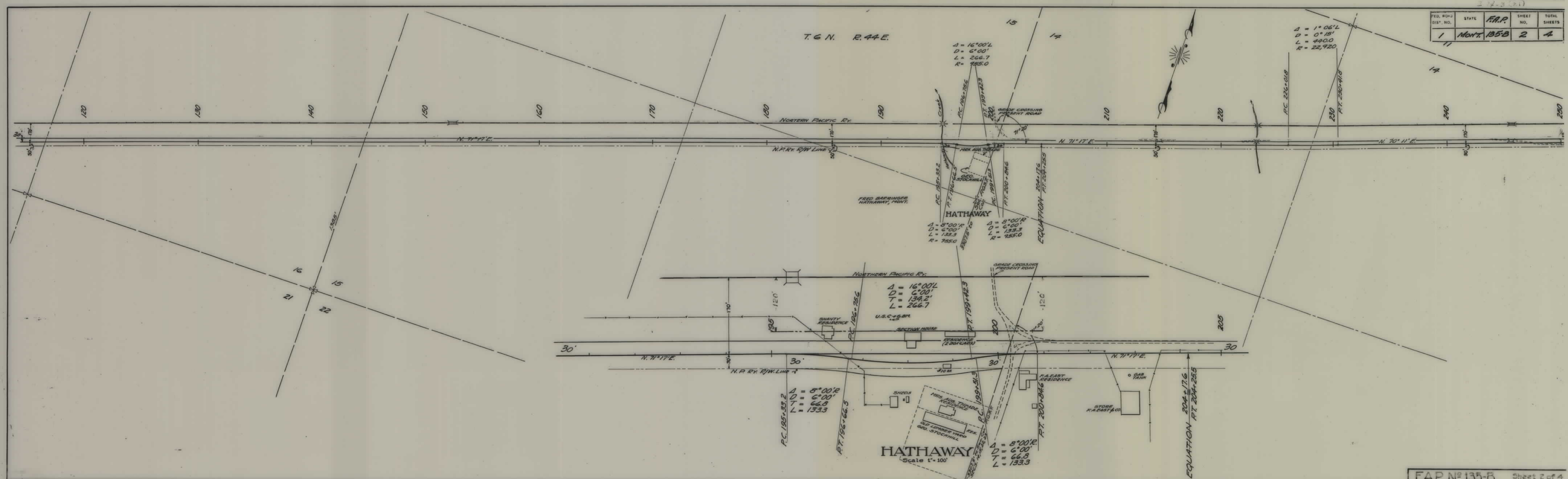
PLANS  
NOT  
TO  
SCALE

FED. ROAD DIST. NO.	STATE	F.A.P.	SHEET NO.	TOTAL SHEETS
1	MONT.	135-B	1	4



STATE OF MONTANA  
 HIGHWAY COMMISSIC  
 RIGHT OF WAY MAP  
 Scale: 1" = 400' Helena, 4-21-24  
 Approved: STATE HIGHWAY ENGINEER  
 F.A.P. N° 135-B Sheet 1 of 4

FED. ROAD DIST. NO.	STATE	F.A.P.	SHEET NO.	TOTAL SHEETS
1	MONT.	135-B	2	4





FED. RD. DIST. NO.	STATE	F.A.P. NO.	SHEET NO.	TOTAL SHEETS
1	Mont.	135-B	4	4



$\Delta = 16^{\circ}40' R$   
 $D = 4^{\circ}00'$   
 $L = 416.7$   
 $R = 1432.5$

$\Delta = 15^{\circ}45' L$   
 $D = 4^{\circ}00'$   
 $L = 468.8$   
 $R = 1432.5$

$\Delta = 27^{\circ}40' L$   
 $D = 10^{\circ}00'$   
 $L = 276.7$   
 $R = 573.0$

$\Delta = 20^{\circ}55' R$   
 $D = 3^{\circ}00'$   
 $L = 1045.8$   
 $R = 2866.0$

$\Delta = 12^{\circ}06' R$   
 $D = 3^{\circ}00'$   
 $L = 403.3$   
 $R = 1910.0$

Claude C. Gray, Trustee  
Helena, Montana  
All of Sec. 5

Levi T. Trejeven  
Fort du Lac, Wisconsin

Chas. W. Kemhrook  
Kirby, Montana

END OF F.A.P. 135 SEC. 'B'  
Sta. 522+00.0