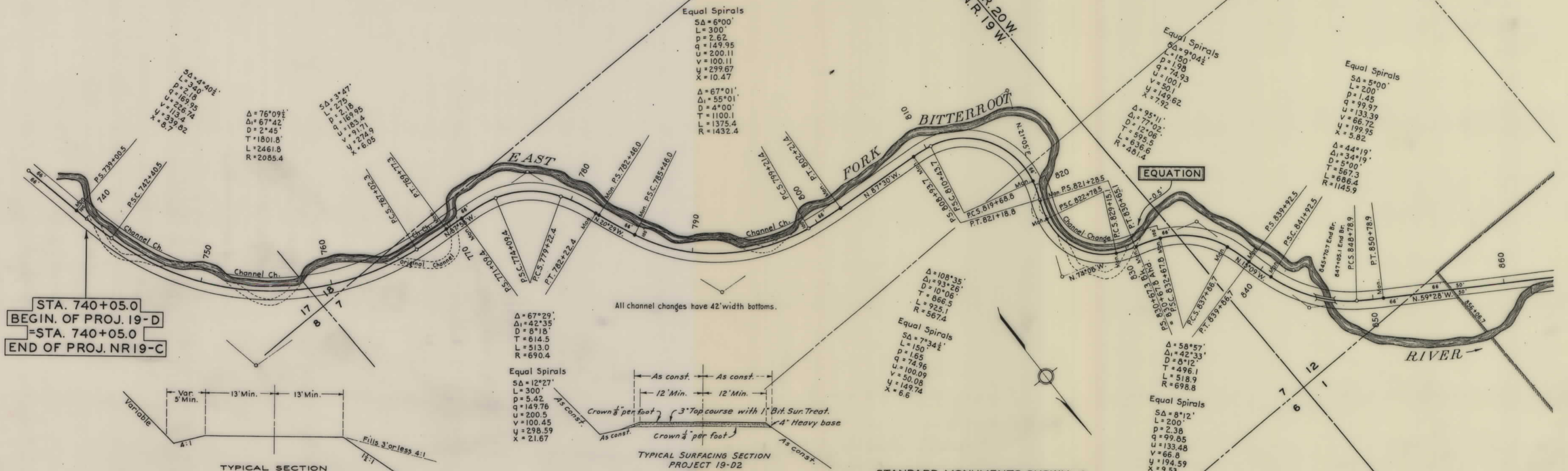


PLANS
NOT
TO
SCALE

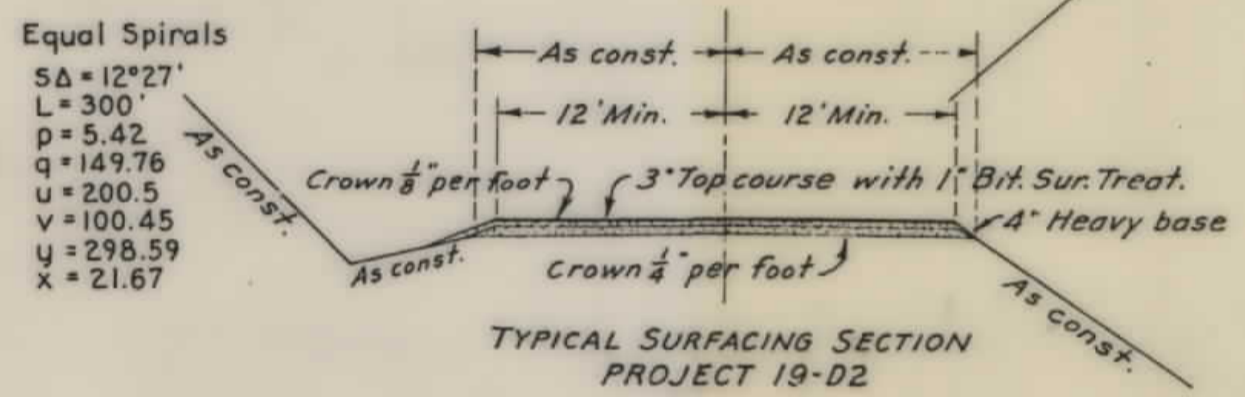
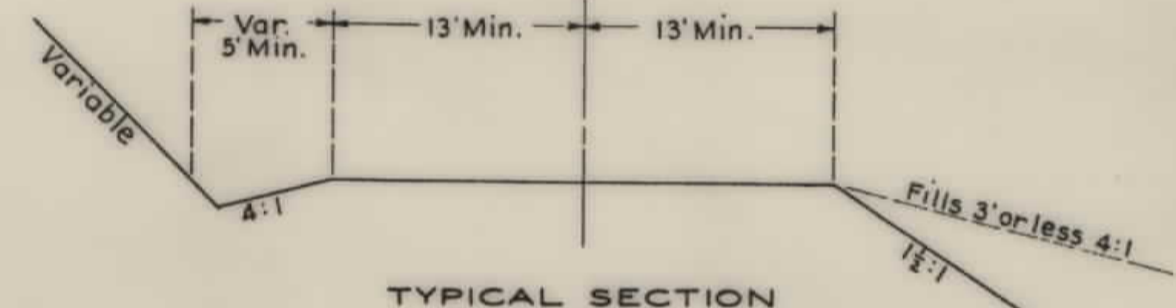
BITTERROOT

NATIONAL

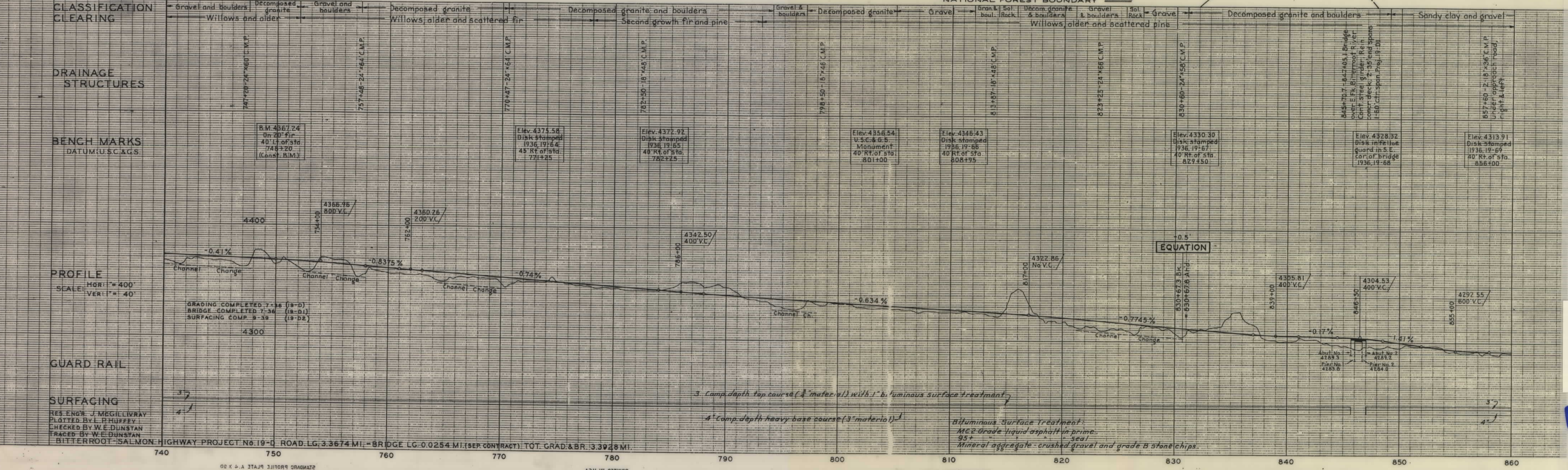
FOREST



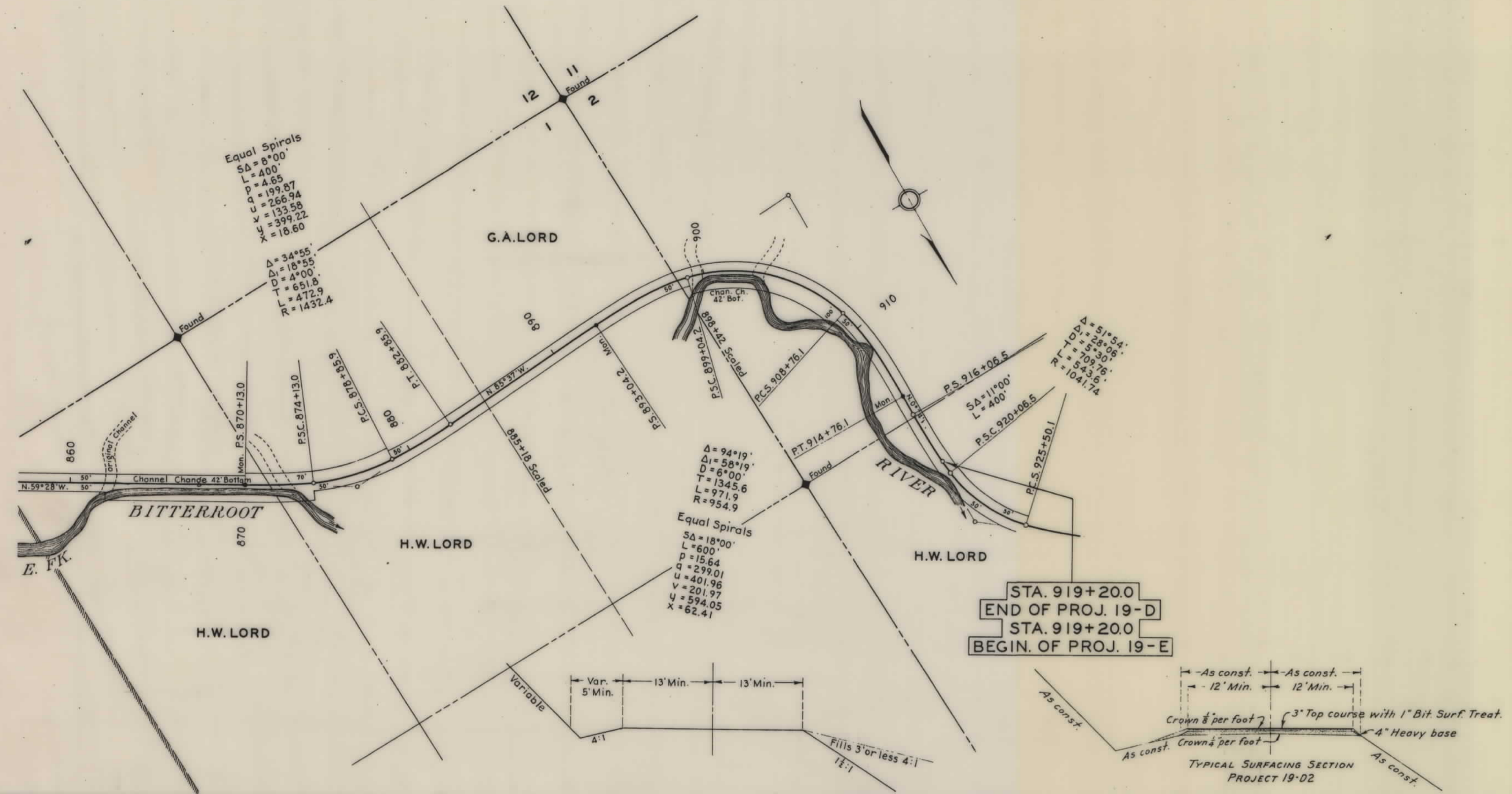
STA. 740+05.0
 BEGIN OF PROJ. 19-D
 = STA. 740+05.0
 END OF PROJ. NR19-C



STANDARD MONUMENTS SHOWN
 NATIONAL FOREST BOUNDARY



NR 19-D SHT 1 OF 2



CLASSIFICATION	1	2	3	4	5	6	7	8	9	10	11	12	13	14	15	16	17	18	19	20	21	22	23	24	25	26	27	28	29	30	31	32	33	34	35	36	37	38	39	40	41	42	43	44	45	46	47	48	49	50
CLASSIFICATION	Sandy clay and gravel										S.R.										Gravel and decomposed granite																													
CLEARING	Cottonwood and heavy brush										Pine, fir and brush										No clearing																													
DRAINAGE STRUCTURES	560+24 - 16'x72' C.M.P. Siphon with 3" x 4" corner inlet & 3" x 4" outlet. 865+03 - 30'x48' C.M.P.										872+65 - 8'x6'x40' Rein. Concr. box culvert. 873+25 - 30'x56' C.M.P.										891+70 - 18'x52' C.M.P. Siphon with 3" x 4" corner inlet & 3" x 4" outlet. 892+25 - 18'x36' C.M.P. 893+00 - 18'x36' C.M.P.																													
BENCH MARKS	Elev. 4302.53 Disk stamped 1936-19-70 L&D 846 R.C.M. sta. 872+90										Elev. 4289.15 Disk stamped 1936-19-71 50' R.F. of sta. 885+00										Elev. 4274.93 Disk stamped 1936-19-72 45' R.F. of sta. 898+50																													
PROFILE	4289.96 1000' V.C. 4300 4276.18 400' V.C.										4267.47 400' V.C. 4261.44 600' V.C.										4251.84 400' V.C. 4248.10 No V.C.																													
GUARD RAIL	3"										3"										3"																													
SURFACING	3" Comp. depth top course (3" material) with 1" Bituminous Surface Treatment										4" Comp. depth heavy base course (3" material)										Bituminous Surface Treatment: Mc 2 grade liquid asphalt in prime coat 95% Mineral aggregate - crushed gravel and class B stone chips																													
RES. ENGR. J. MCGILLIVRAY PLOTTER BY L. HUFFEY CHECKED BY W. E. DUNSTAN TRACED BY W. E. DUNSTAN BITTERROOT - SALMON HIGHWAY PROJECT No. 19-D ROAD LG. 3.3674 M. - BRIDGE LG. (SEP. CONTRACT) 0.0254 MI. - TOT. GR. & BR. 3.3928 MI.																																																		

NR 19-D SHT 2 OF 2