

PLANS

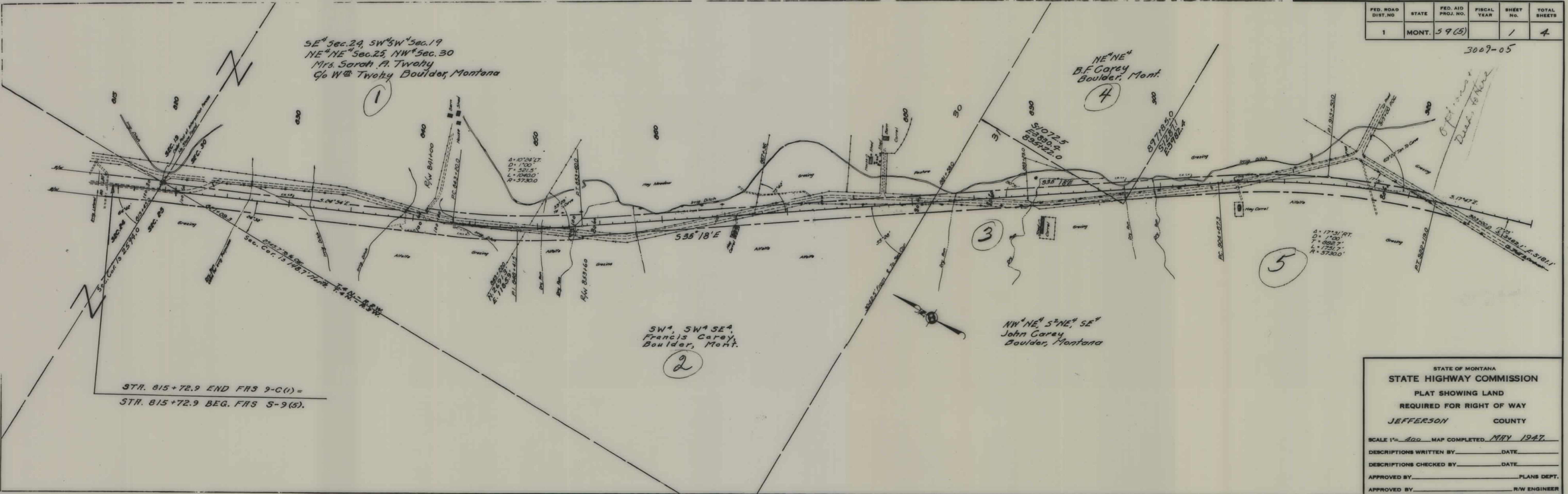
NOT

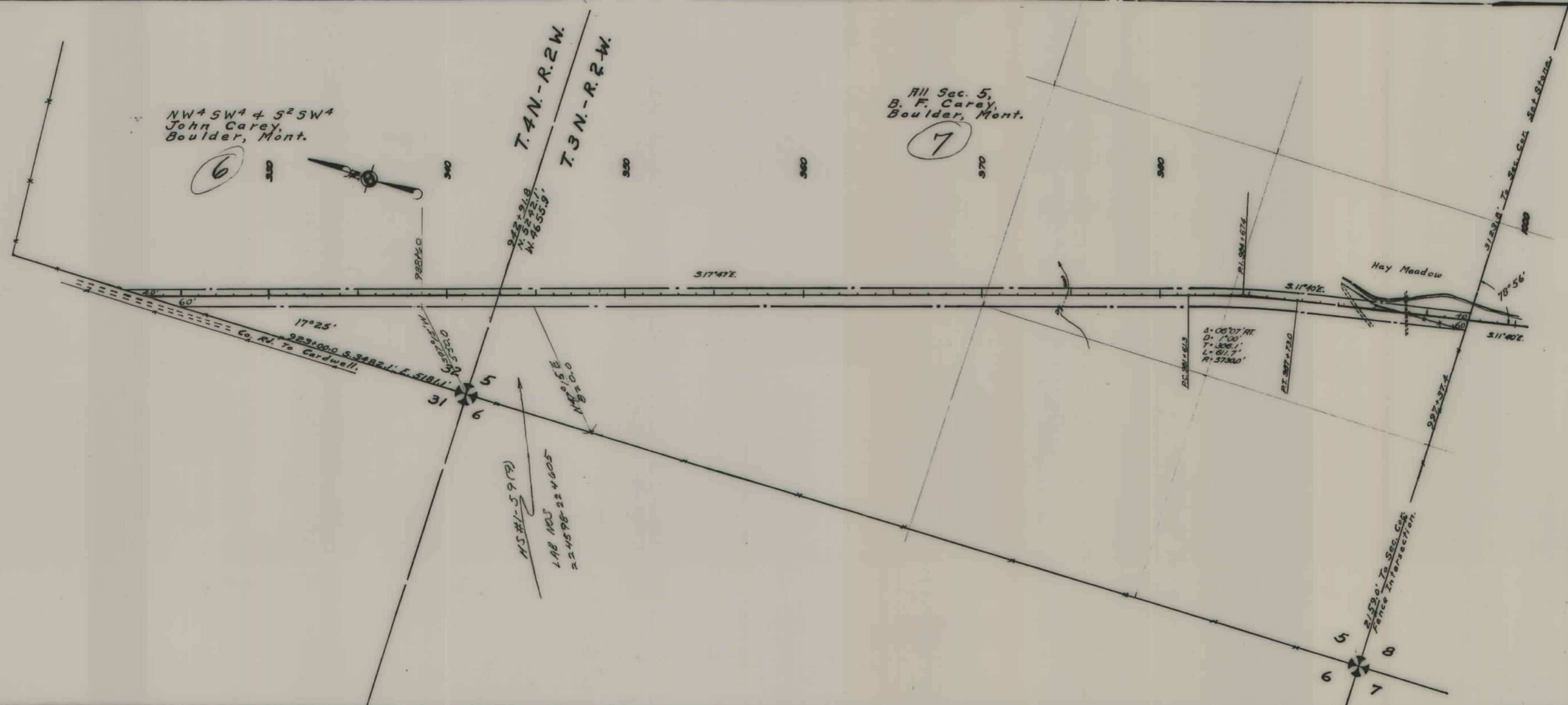
TO

SCALE

FED. ROAD DIST. NO.	STATE	FED. AID PROJ. NO.	FISCAL YEAR	SHEET NO.	TOTAL SHEETS
1	MONT.	59(5)		1	4

3009-05





FED. ROAD DIST. NO.	STATE	FED. AID PROJ. NO.	FISCAL YEAR	SHEET NO.	TOTAL SHEETS
1	MONT.	59-6)		2	4

STATE OF MONTANA
 STATE HIGHWAY COMMISSION
 PLAT SHOWING LAND
 REQUIRED FOR RIGHT OF WAY
 JEFFERSON COUNTY

SCALE 1" = 400' MAP COMPLETED MAY 1947.
 DESCRIPTIONS WRITTEN BY M.R.C. DATE 6-13-47
 DESCRIPTIONS CHECKED BY EOP DATE 6-17-47
 APPROVED BY _____ PLANS DEPT.
 APPROVED BY _____ R/W ENGINEER

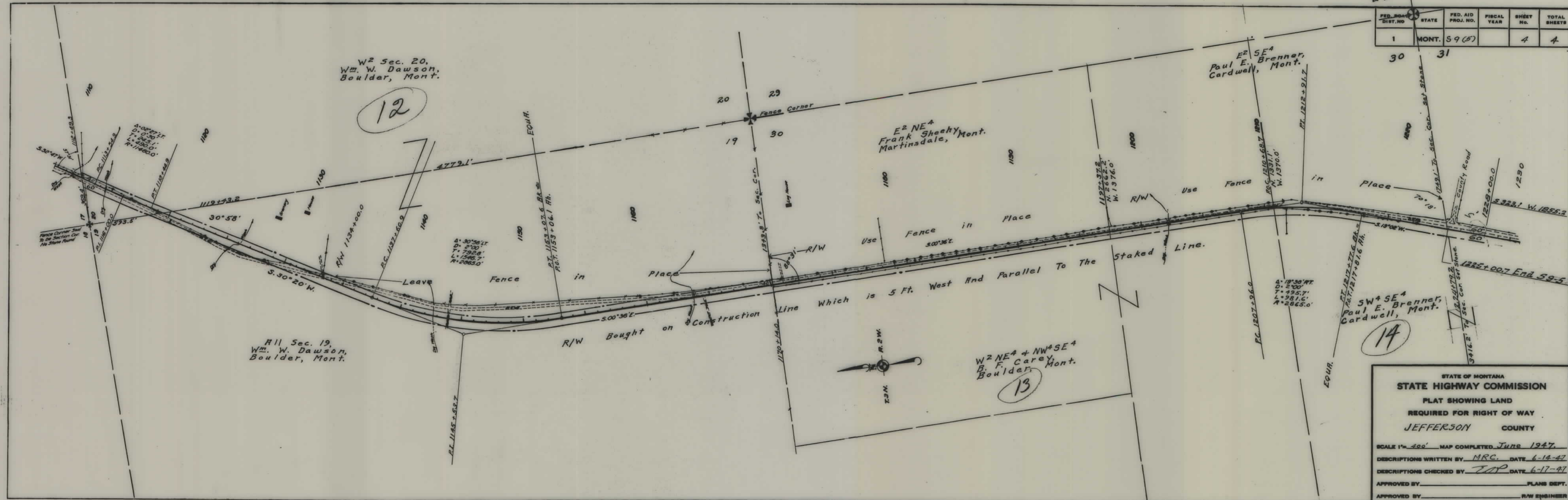


FED. ROAD DIST. NO.	STATE	FED. AID PROJ. NO.	FISCAL YEAR	SHEET NO.	TOTAL SHEETS
1	MONT.	F.A.S. 9(5)		3	4

STATE OF MONTANA
 STATE HIGHWAY COMMISSION
 PLAT SHOWING LAND
 REQUIRED FOR RIGHT OF WAY
 JEFFERSON COUNTY

SCALE 1" = 400' MAP COMPLETED June 1947
 DESCRIPTIONS WRITTEN BY M.R.C. DATE 6-13-47
 DESCRIPTIONS CHECKED BY T.O.P. DATE 6-17-47
 APPROVED BY _____ PLANS DEPT.
 APPROVED BY _____ R/W ENGINEER

FED. ROAD DIST. NO.	STATE	FED. AID PROJ. NO.	FISCAL YEAR	SHEET NO.	TOTAL SHEETS
1	MONT.	59(5)		4	4



W² Sec. 20,
Wm. W. Dawson,
Boulder, Mont.
12

R11 Sec. 19,
Wm. W. Dawson,
Boulder, Mont.

E² NE⁴
Frank Sheehy,
Martinsdale,
Mont.

E² SE⁴
Paul E. Brenner,
Cardwell,
Mont.

W² NE⁴ + NW⁴ SE⁴
B. F. Carey,
Boulder, Mont.
13

SW⁴ SE⁴
Paul E. Brenner,
Cardwell, Mont.
14

STATE OF MONTANA
STATE HIGHWAY COMMISSION
PLAT SHOWING LAND
REQUIRED FOR RIGHT OF WAY
JEFFERSON COUNTY

SCALE 1" = 400' MAP COMPLETED June 1947.
DESCRIPTIONS WRITTEN BY MRC. DATE 6-14-47
DESCRIPTIONS CHECKED BY JOP. DATE 6-17-47
APPROVED BY _____ PLANS DEPT.
APPROVED BY _____ R/W ENGINEER