

PLANS

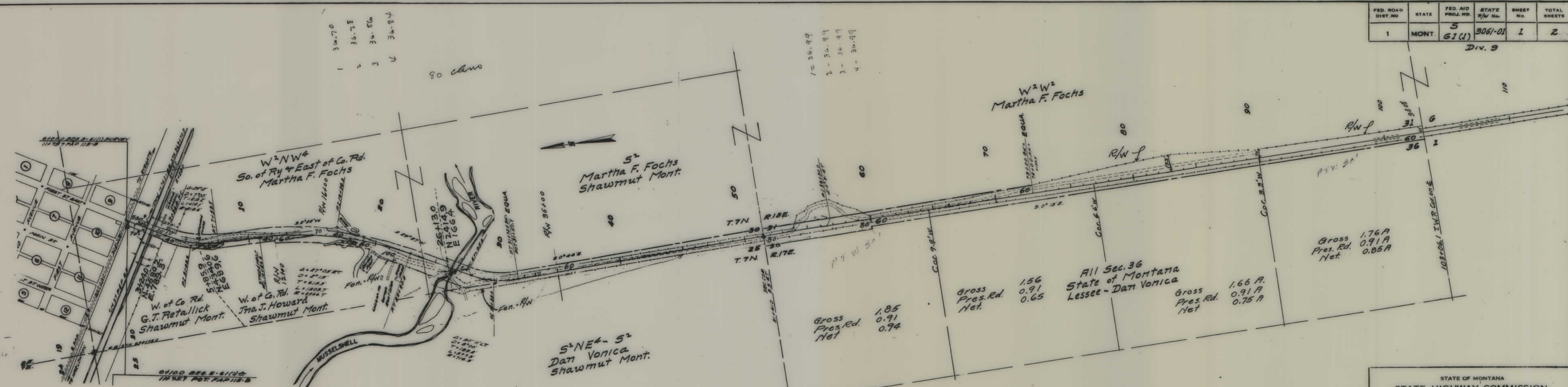
NOT

TO

SCALE

FED. ROAD DIST. NO.	STATE	FED. AID PROJ. NO.	STATE R/W No.	SHEET No.	TOTAL SHEETS
1	MONT.	5 61(1)	3061-01	1	2

DIV. 9



- 1 36.70
- 2 36.78
- 3 36.86
- 4 36.94

- 1 = 36.99
- 2 = 36.94
- 3 = 36.97
- 4 = 36.99

W<sup>2</sup>NW<sup>4</sup>  
So. of Ry & East of Co. Rd.  
Martha F. Fochs

S<sup>2</sup>  
Martha F. Fochs  
Shawmut Mont.

W<sup>2</sup>W<sup>2</sup>  
Martha F. Fochs

W. of Co. Rd.  
G.T. Retallick  
Shawmut Mont.

W. of Co. Rd.  
Tha. J. Howard  
Shawmut Mont.

S<sup>2</sup>NE<sup>4</sup> - S<sup>2</sup>  
Dan Vonica  
Shawmut Mont.

Gross 1.85  
Pres. Rd. 0.91  
Net 0.94

Gross 1.56  
Pres. Rd. 0.91  
Net 0.65

All Sec. 36  
State of Montana  
Lessee - Dan Vonica

Gross 1.66 A.  
Pres. Rd. 0.91 A.  
Net 0.75 A

Gross 1.76 A  
Pres. Rd. 0.91 A  
Net 0.85 A

STATE OF MONTANA  
STATE HIGHWAY COMMISSION  
PLAT SHOWING LAND  
REQUIRED FOR RIGHT OF WAY  
WHEATLAND COUNTY

SCALE 1" = 400' MAP COMPLETED Aug. 1946

DESCRIPTIONS WRITTEN BY \_\_\_\_\_ DATE \_\_\_\_\_

DESCRIPTIONS CHECKED BY \_\_\_\_\_ DATE \_\_\_\_\_

APPROVED BY \_\_\_\_\_ PLANS DEPT.

APPROVED BY \_\_\_\_\_ R.W. ENGINEER

