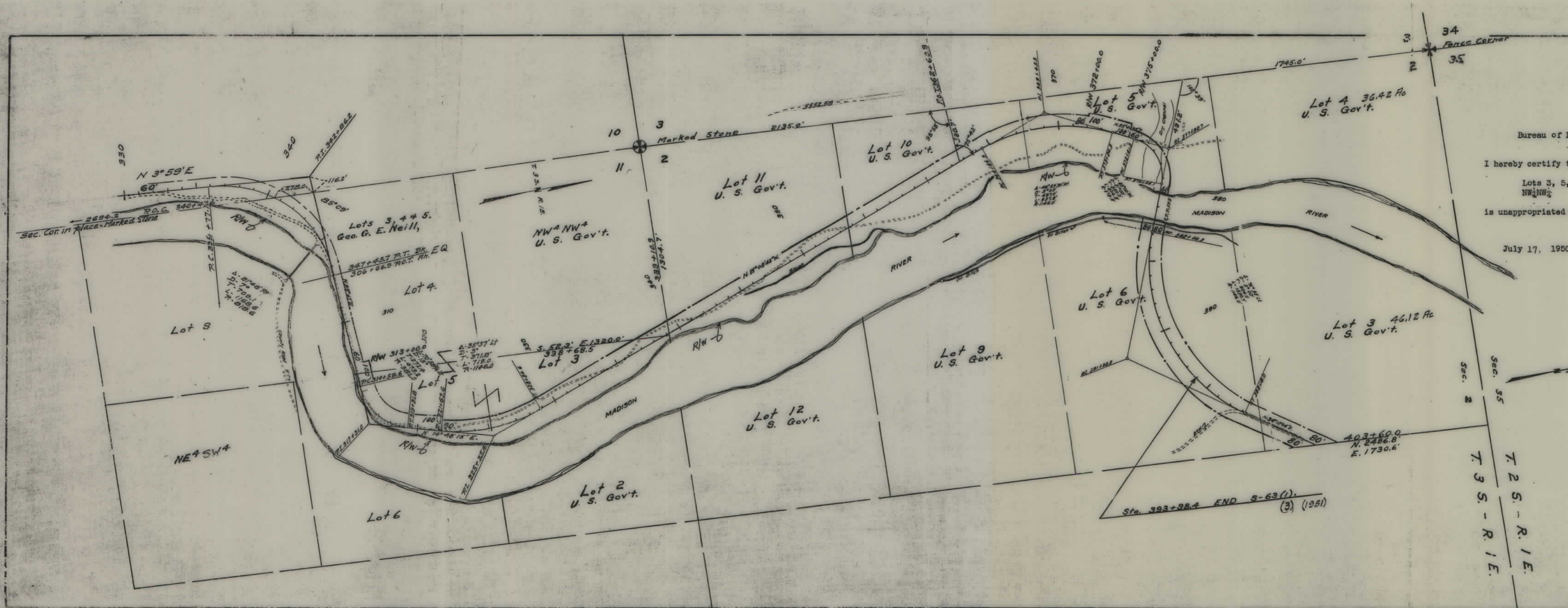


PLANS

NOT

TO

SCALE



FED. ROAD DIST. NO.	STATE	FED. AID PROJ. NO.	R/W No.	SHEET No.	TOTAL SHEETS
1	MONT.	S-63(1)	3063-01	1	1

S 63(3)  
1951

DEPARTMENT OF THE INTERIOR  
Bureau of Land Management - Montana Land Office  
Billings, Montana

I hereby certify that the right-of-way represented hereon in  
Lots 3, 5, 6, 10 and 11 Sec. 2, T3S, R1E  
NW $\frac{1}{2}$ NW $\frac{1}{2}$  Sec. 11, T3S, R1E  
is unappropriated public domain.

July 17, 1950

*William Riddell*  
WILLIAM RIDDELL, Manager



STATE OF MONTANA  
STATE HIGHWAY COMMISSION  
PLAT SHOWING LAND  
REQUIRED FOR RIGHT OF WAY  
MADISON COUNTY

SCALE 1" = 400' MAP COMPLETED July 1950.

DESCRIPTIONS WRITTEN BY \_\_\_\_\_ DATE \_\_\_\_\_

DESCRIPTIONS CHECKED BY \_\_\_\_\_ DATE \_\_\_\_\_

APPROVED BY \_\_\_\_\_ PLANS DEPT.

APPROVED BY \_\_\_\_\_ R/W ENGINEER