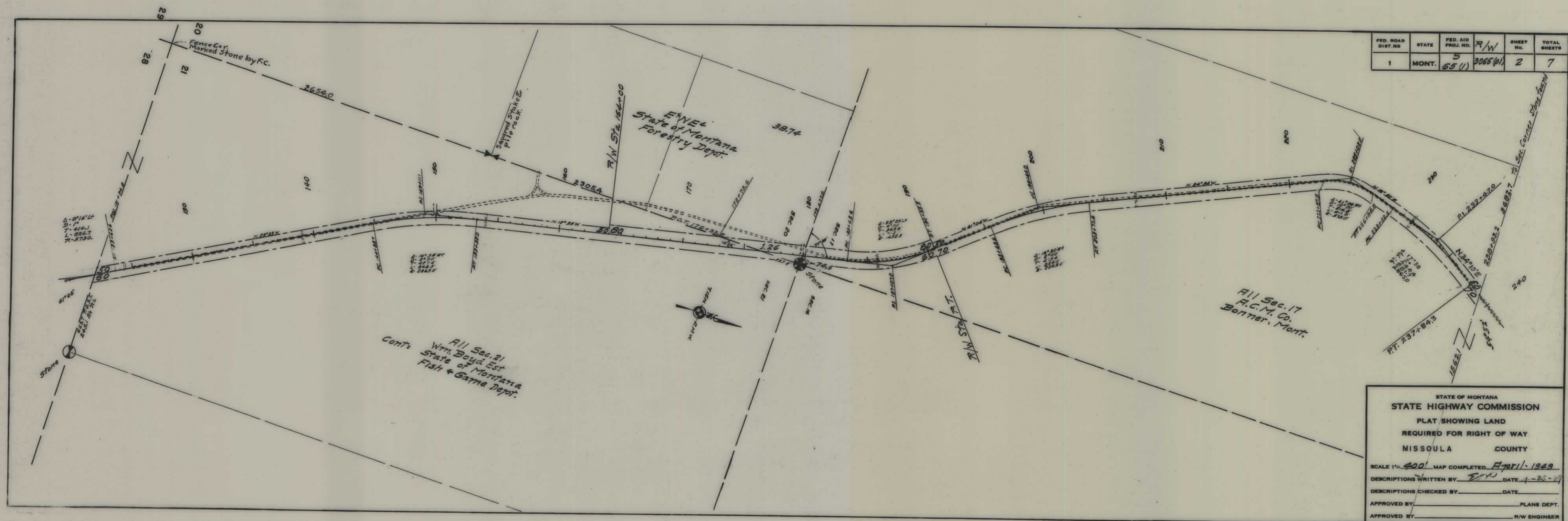


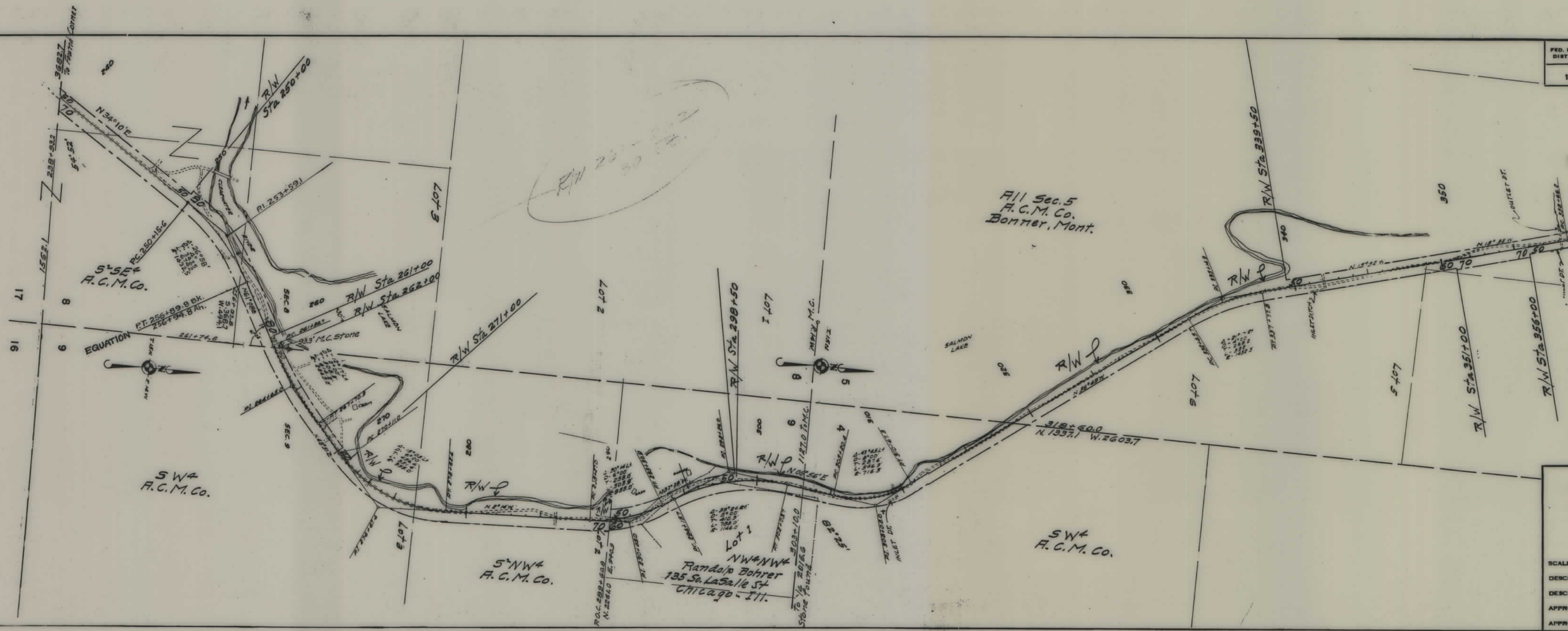
PLANS
NOT
TO
SCALE

FED. ROAD DIST. NO.	STATE	FED. AID PROJ. NO.	R/W	SHEET NO.	TOTAL SHEETS
1	MONT.	5 65 (1)	3065 (01)	2	7



STATE OF MONTANA
STATE HIGHWAY COMMISSION
PLAT SHOWING LAND
REQUIRED FOR RIGHT OF WAY
MISSOULA COUNTY

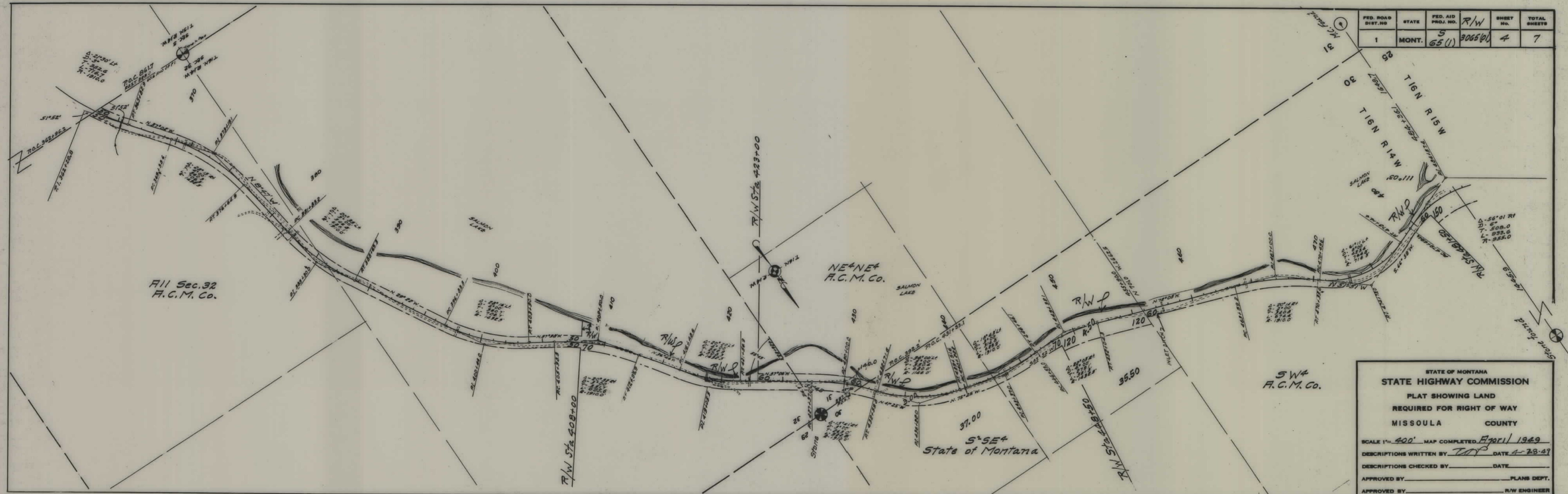
SCALE 1" = 400' MAP COMPLETED April 1, 1949
 DESCRIPTIONS WRITTEN BY E.V. DATE 4-25-49
 DESCRIPTIONS CHECKED BY _____ DATE _____
 APPROVED BY _____ PLANS DEPT.
 APPROVED BY _____ R/W ENGINEER



FED. ROAD DIST. NO.	STATE	FED. AID PROJ. NO.	R/W	SHEET NO.	TOTAL SHEETS
1	MONT.	65 (1)	3065 (0)	3	7

STATE OF MONTANA
STATE HIGHWAY COMMISSION
PLAT SHOWING LAND
REQUIRED FOR RIGHT OF WAY
MISSOULA COUNTY

SCALE 1"= 400' MAP COMPLETED April 1949
DESCRIPTIONS WRITTEN BY JOP DATE 4-28-49
DESCRIPTIONS CHECKED BY DATE
APPROVED BY PLANS DEPT.
APPROVED BY R/W ENGINEER



STATE OF MONTANA
STATE HIGHWAY COMMISSION
PLAT SHOWING LAND
REQUIRED FOR RIGHT OF WAY
MISSOULA COUNTY

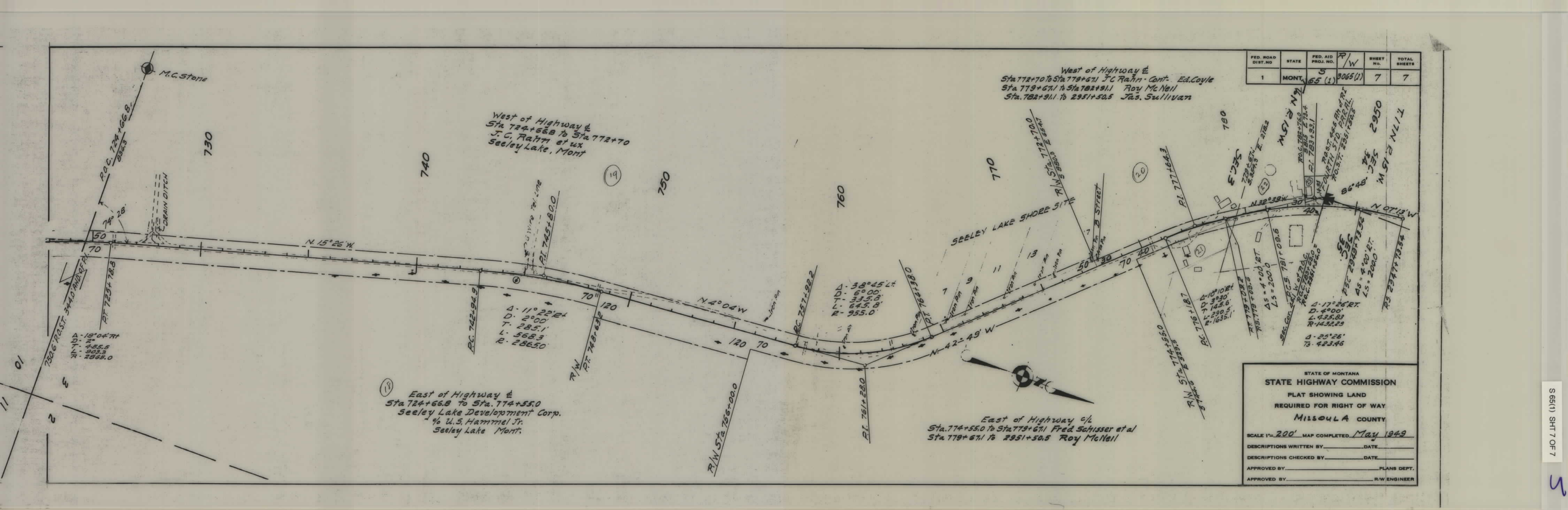
SCALE 1" = 400' MAP COMPLETED April 1949
DESCRIPTIONS WRITTEN BY TOP DATE 4-28-49
DESCRIPTIONS CHECKED BY _____ DATE _____
APPROVED BY _____ PLANS DEPT.
APPROVED BY _____ R/W ENGINEER

FED. ROAD DIST. NO.	STATE	FED. AID PROJ. NO.	R/W	SHEET NO.	TOTAL SHEETS
1	MONT.	5 65(1)	3065(0)	5	7



STATE OF MONTANA
STATE HIGHWAY COMMISSION
PLAT SHOWING LAND
REQUIRED FOR RIGHT OF WAY
MISSOULA COUNTY

SCALE 1"=400' MAP COMPLETED April 1949
DESCRIPTIONS WRITTEN BY JOP DATE 4-28-49
DESCRIPTIONS CHECKED BY DATE
APPROVED BY PLANS DEPT.
APPROVED BY R/W ENGINEER



FED. ROAD DIST. NO.	STATE	FED. AID PROJ. NO.	R/W	SHEET NO.	TOTAL SHEETS
1	MONT.	5	3065(1)	7	7

West of Highway E
Sta 772+70 to Sta 779+67.1 J.C. Rahn - Cont. Ed. Coyle
Sta 779+67.1 to Sta 782+91.1 Roy McNeil
Sta 782+91.1 to 2951+50.5 Jas. Sullivan

West of Highway E
Sta 724+66.8 to Sta 772+70
J.C. Rahn et ux
Seeley Lake, Mont

East of Highway E
Sta 724+66.8 to Sta. 774+55.0
Seeley Lake Development Corp.
% U.S. Hammel Jr.
Seeley Lake Mont.

East of Highway c/l
Sta. 774+55.0 to Sta 779+67.1 Fred Schisser et al
Sta 779+67.1 to 2951+50.5 Roy McNeil

STATE OF MONTANA
STATE HIGHWAY COMMISSION
PLAT SHOWING LAND
REQUIRED FOR RIGHT OF WAY
MISSOULA COUNTY

SCALE 1"=200' MAP COMPLETED May 1949

DESCRIPTIONS WRITTEN BY _____ DATE _____

DESCRIPTIONS CHECKED BY _____ DATE _____

APPROVED BY _____ PLANS DEPT.

APPROVED BY _____ R/W ENGINEER