

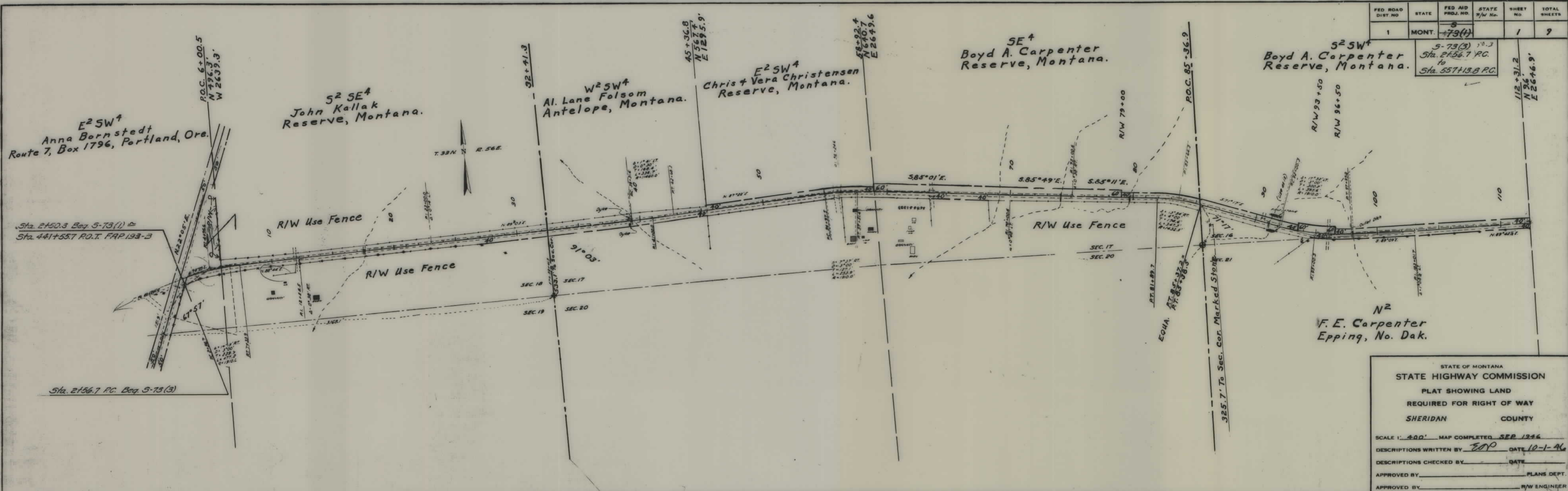
PLANS

NOT

TO

SCALE





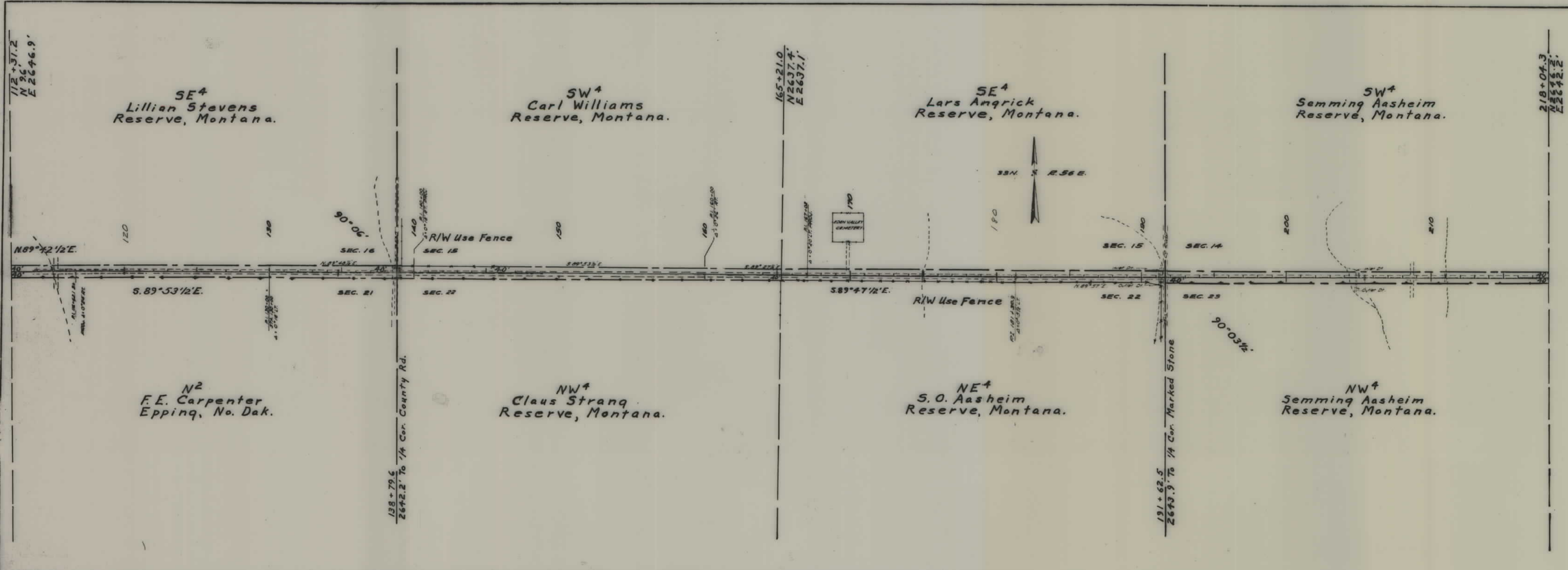
FED ROAD DIST. NO.	STATE	FED AID PROJ. NO.	STATE R/W No.	SHEET NO.	TOTAL SHEETS
1	MONT.	5-73(4)		1	2

5-73(3) 10.3  
Sta. 2156.7 P.C.  
to  
Sta. 557+13.8 P.C.

STATE OF MONTANA  
 STATE HIGHWAY COMMISSION  
 PLAT SHOWING LAND  
 REQUIRED FOR RIGHT OF WAY  
 SHERIDAN COUNTY

SCALE 1" = 400' MAP COMPLETED SEP 1946  
 DESCRIPTIONS WRITTEN BY EDP DATE 10-1-46  
 DESCRIPTIONS CHECKED BY \_\_\_\_\_ DATE \_\_\_\_\_  
 APPROVED BY \_\_\_\_\_ PLANS DEPT.  
 APPROVED BY \_\_\_\_\_ R/W ENGINEER





FED. ROAD DIST. NO.	STATE	FED. AID PROJ. NO.	STATE R/W No.	SHEET NO.	TOTAL SHEETS
1	MONT.	73(1)		2	9

5-73(3)  
Sta. 2156.7 RC.  
to  
Sta. 557113.8 RC.

STATE OF MONTANA  
STATE HIGHWAY COMMISSION  
PLAT SHOWING LAND  
REQUIRED FOR RIGHT OF WAY  
SHERIDAN COUNTY

SCALE 1" = 400' MAP COMPLETED SEP 1946

DESCRIPTIONS WRITTEN BY \_\_\_\_\_ DATE \_\_\_\_\_

DESCRIPTIONS CHECKED BY \_\_\_\_\_ DATE \_\_\_\_\_

APPROVED BY \_\_\_\_\_ LANS DEPT.

APPROVED BY \_\_\_\_\_ R/W ENGINEER



218+04.3  
N2646.2'  
E2642.2'

SE<sup>4</sup>  
Erick Sundsted  
Reserve, Montana.

SW<sup>4</sup>  
Thos. + Ella Sundsted  
Daqmar, Montana.

SE<sup>4</sup>  
Claus H. Jensen  
Reserve, Montana.

Lots 3+4, E<sup>2</sup>SW<sup>4</sup>  
Axel Johnson  
Antelope, Montana.

S<sup>2</sup>SE<sup>4</sup>  
Mads P. Madsen  
Reserve, Montana.

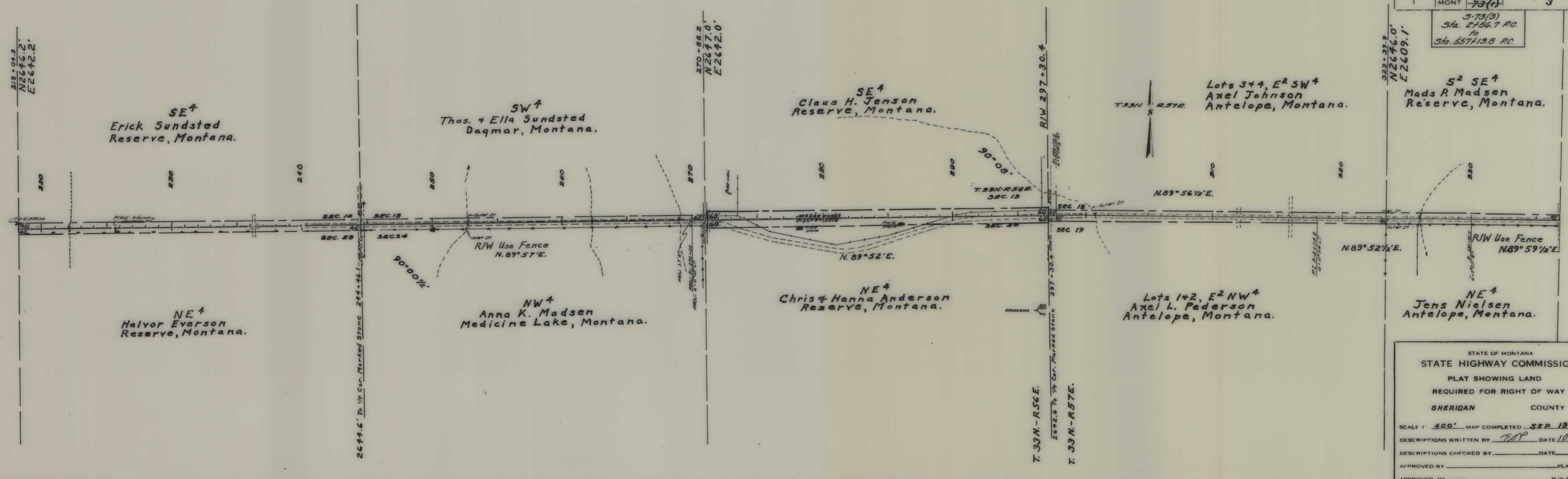
NE<sup>4</sup>  
Halvor Everson  
Reserve, Montana.

NW<sup>4</sup>  
Anna K. Madsen  
Medicine Lake, Montana.

NE<sup>4</sup>  
Chris + Hanna Anderson  
Reserve, Montana.

Lots 1+2, E<sup>2</sup>NW<sup>4</sup>  
Axel L. Pederson  
Antelope, Montana.

NE<sup>4</sup>  
Jens Nielsen  
Antelope, Montana.



FED. ROAD DIST. NO.	STATE	FED. AID PROJ. NO.	STATE T.W. NO.	SHEET N.	TOTAL SHEETS
1	MONT.	5-73(1)		3	9

5-73(3)  
Sta. 2156.7 PC.  
to  
Sta. 557+13.8 PC.

STATE OF MONTANA  
STATE HIGHWAY COMMISSION  
PLAT SHOWING LAND  
REQUIRED FOR RIGHT OF WAY  
SHERIDAN COUNTY

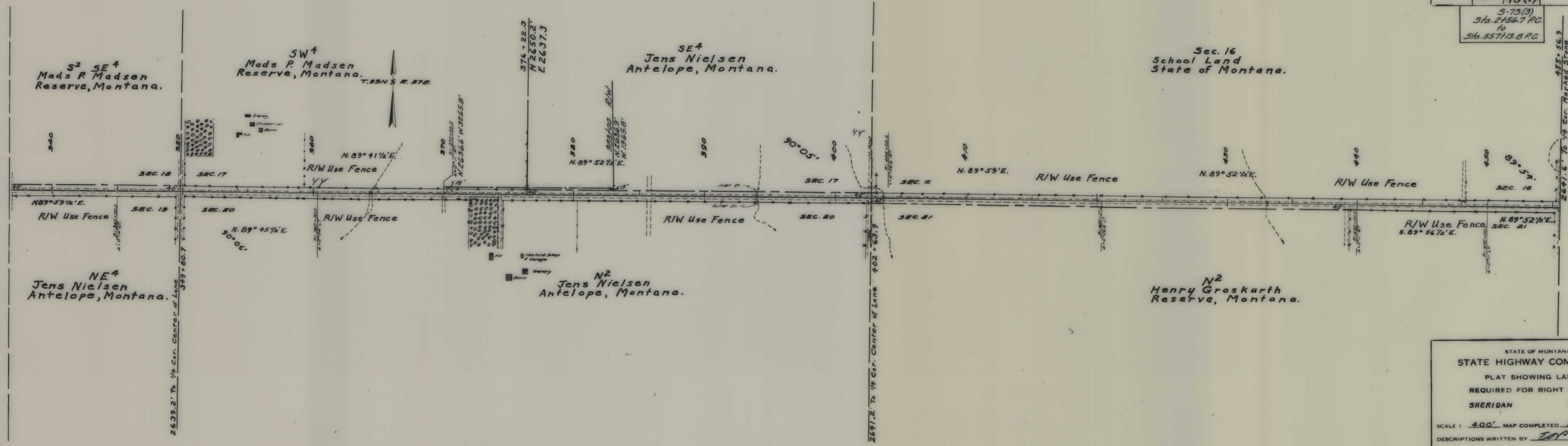
SCALE 1" = 400' MAP COMPLETED SEP 1946  
DESCRIPTIONS WRITTEN BY EOP DATE 10-1-46  
DESCRIPTIONS CHECKED BY \_\_\_\_\_ DATE \_\_\_\_\_  
APPROVED BY \_\_\_\_\_ PLANS DEPT  
APPROVED BY \_\_\_\_\_ R/W ENGINEER



NOTE:  
Sta. 370+00.0 to Sta. 383+00.0  
15.0' Additional R/W for S-73(3)

FED. ROAD DIST. NO.	STATE	FED. AID PROJ. NO.	STATE P.W. NO.	SHEET	TOTAL SHEETS
1	MONT.	5-73(3)	73(1)	4	9

5-73(3)  
Sta. 2+56.7 P.C.  
to  
Sta. 55+13.8 P.C.

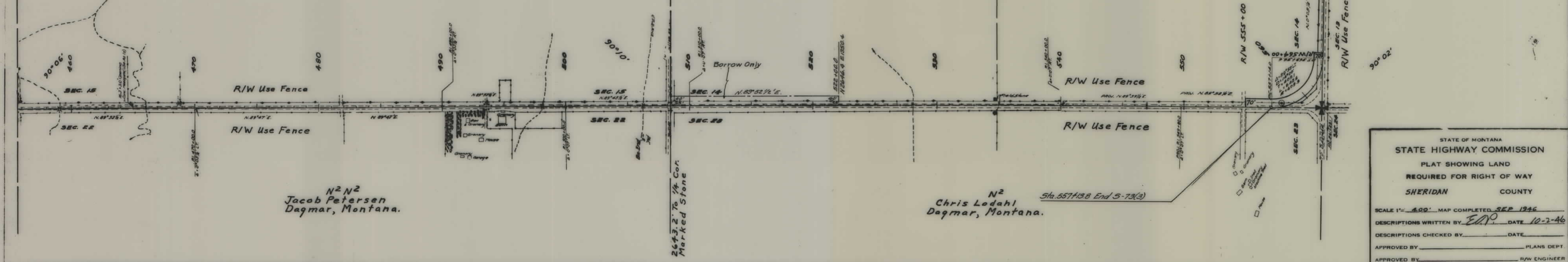


STATE OF MONTANA  
STATE HIGHWAY COMMISSION  
PLAT SHOWING LAND  
REQUIRED FOR RIGHT OF WAY  
SHERIDAN COUNTY

SCALE: 400' MAP COMPLETED SEP 1946  
DESCRIPTIONS WRITTEN BY JDP DATE 10-2-46  
DESCRIPTIONS CHECKED BY \_\_\_\_\_ DATE \_\_\_\_\_  
APPROVED BY \_\_\_\_\_ PLANS DEPT  
APPROVED BY \_\_\_\_\_ P.W. ENGINEER



455+56.9  
2641.6 To 1/4 Cor. Marked Stone



N2645.2  
W4.2  
L.26+58.7  
2.54+92.1

534+01.5  
N2649.2  
E2631.9



FED. ROAD DIST. NO.	STATE	FED. AID PROJ. NO.	STATE R/W No.	SHEET NO.	TOTAL SHEETS
1	MONT.	5-73(1)		5	9

5-73(3)  
Sta. 2156.7 P.C.  
to  
Sta. 557+13.8 P.C.

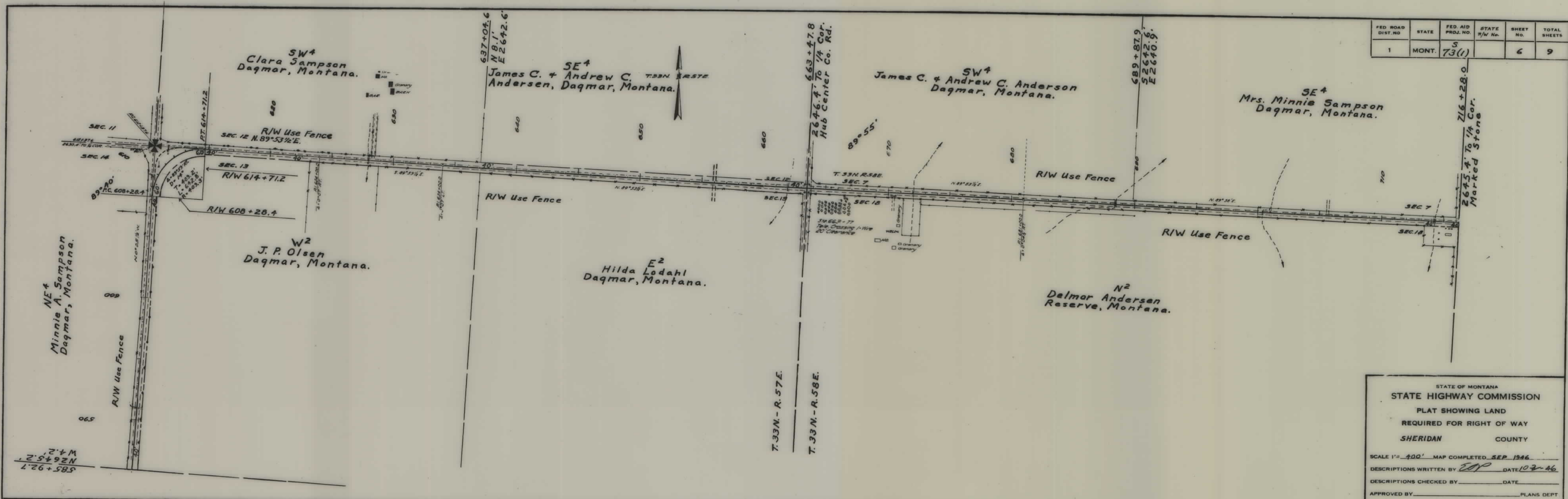
STATE OF MONTANA  
STATE HIGHWAY COMMISSION  
PLAT SHOWING LAND  
REQUIRED FOR RIGHT OF WAY  
SHERIDAN COUNTY

SCALE 1" = 400' MAP COMPLETED SEP 1946  
DESCRIPTIONS WRITTEN BY E.A.P. DATE 10-2-46  
DESCRIPTIONS CHECKED BY \_\_\_\_\_ DATE \_\_\_\_\_  
APPROVED BY \_\_\_\_\_ PLANS DEPT.  
APPROVED BY \_\_\_\_\_ R/W ENGINEER

2643.2 To 1/4 Cor. Marked Stone

Sta. 557+13.8 End 5-73(3)





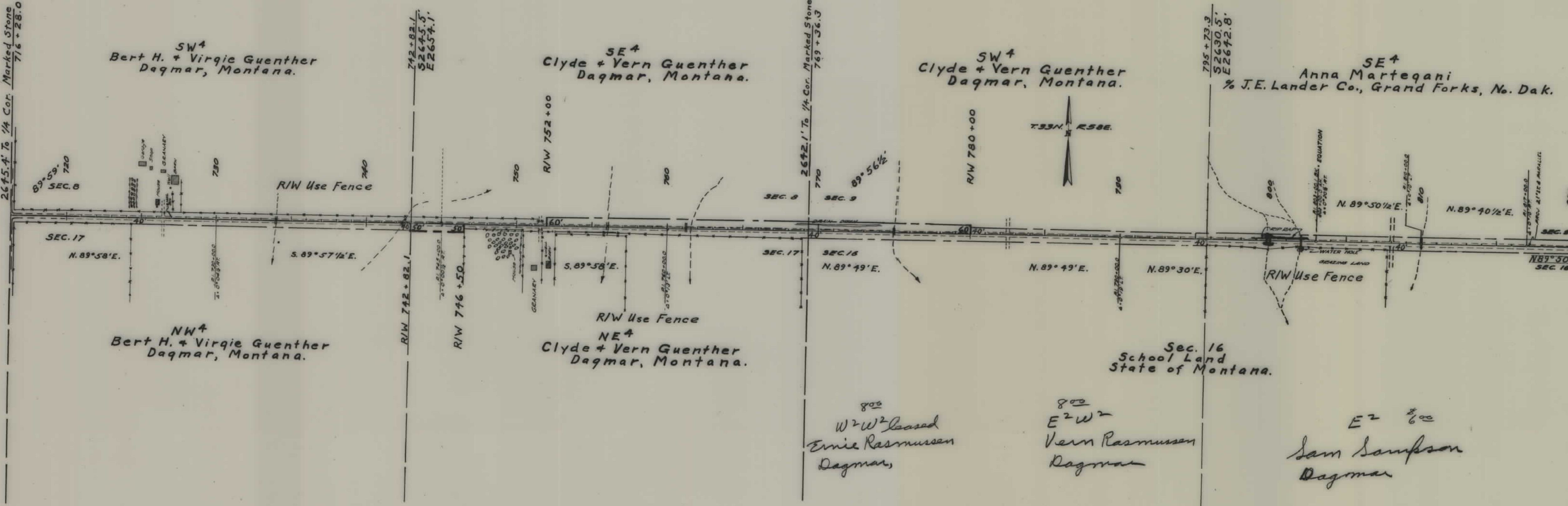
STATE OF MONTANA  
 STATE HIGHWAY COMMISSION  
 PLAT SHOWING LAND  
 REQUIRED FOR RIGHT OF WAY  
 SHERIDAN COUNTY

SCALE 1" = 400' MAP COMPLETED SEP 1946  
 DESCRIPTIONS WRITTEN BY TOP DATE 10-2-46  
 DESCRIPTIONS CHECKED BY \_\_\_\_\_ DATE \_\_\_\_\_  
 APPROVED BY \_\_\_\_\_ PLANS DEPT.  
 APPROVED BY \_\_\_\_\_ R/W ENGINEER



FED. ROAD DIST. NO.	STATE	FED. AID PROJ. NO.	STATE R/W NO.	SHEET No.	TOTAL SHEETS
1	MONT.	5	73(1)	7	9

2645.4' To 1/4 Cor. Marked Stone 716 + 28.0  
 742 + 82.1  
 52645.5  
 E2654.1  
 2642.1' To 1/4 Cor. Marked Stone 769 + 36.3  
 795 + 73.3  
 52630.5  
 E2642.8  
 2645.0 To 1/4 Cor. Center of Co. Rd. 822 + 10.3



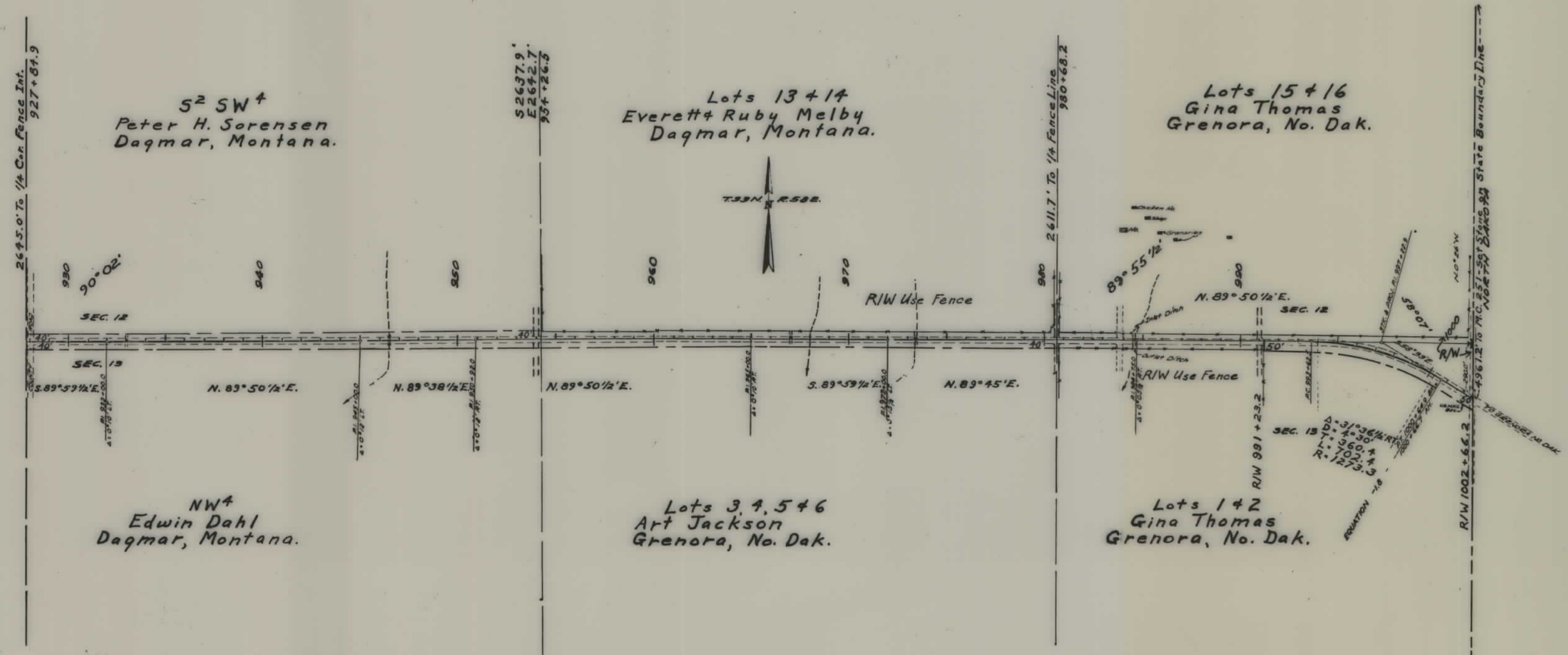
STATE OF MONTANA  
 STATE HIGHWAY COMMISSION  
 PLAT SHOWING LAND  
 REQUIRED FOR RIGHT OF WAY  
 SHERIDAN COUNTY  
 SCALE 1" = 400' MAP COMPLETED SEP 1946  
 DESCRIPTIONS WRITTEN BY EOP DATE 10-2-46  
 DESCRIPTIONS CHECKED BY \_\_\_\_\_ DATE \_\_\_\_\_  
 APPROVED BY \_\_\_\_\_ PLANS DEPT  
 APPROVED BY \_\_\_\_\_ R W ENGINEER







FED. ROAD DIST. NO.	STATE	FED. AID PROJ. NO.	STATE T/W No.	SHEET NO.	TOTAL SHEETS
1	MONT.	S 73(1)		9	9



STATE OF MONTANA  
 STATE HIGHWAY COMMISSION  
 PLAT SHOWING LAND  
 REQUIRED FOR RIGHT OF WAY  
 SHERIDAN COUNTY

SCALE 1" = 400' COMPLETED SEP 1946

DESCRIPTIONS WRITTEN BY \_\_\_\_\_ DATE \_\_\_\_\_  
 DESCRIPTIONS CHECKED BY \_\_\_\_\_ DATE \_\_\_\_\_  
 APPROVED BY \_\_\_\_\_ PLANS DEPT.  
 APPROVED BY \_\_\_\_\_ R.W. ENGINEER