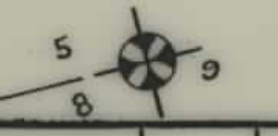


PLANS

NOT

TO

SCALE



FED. ROAD DIST. NO.	STATE	FED. AID PROJ. NO.	R/W No.	SHEET NO.	TOTAL SHEETS
8	MONT.	577(4)	3077-04	2	3

②
S² Sec. 6
Thomas Staunton Ranch Co.
(except cemetery)

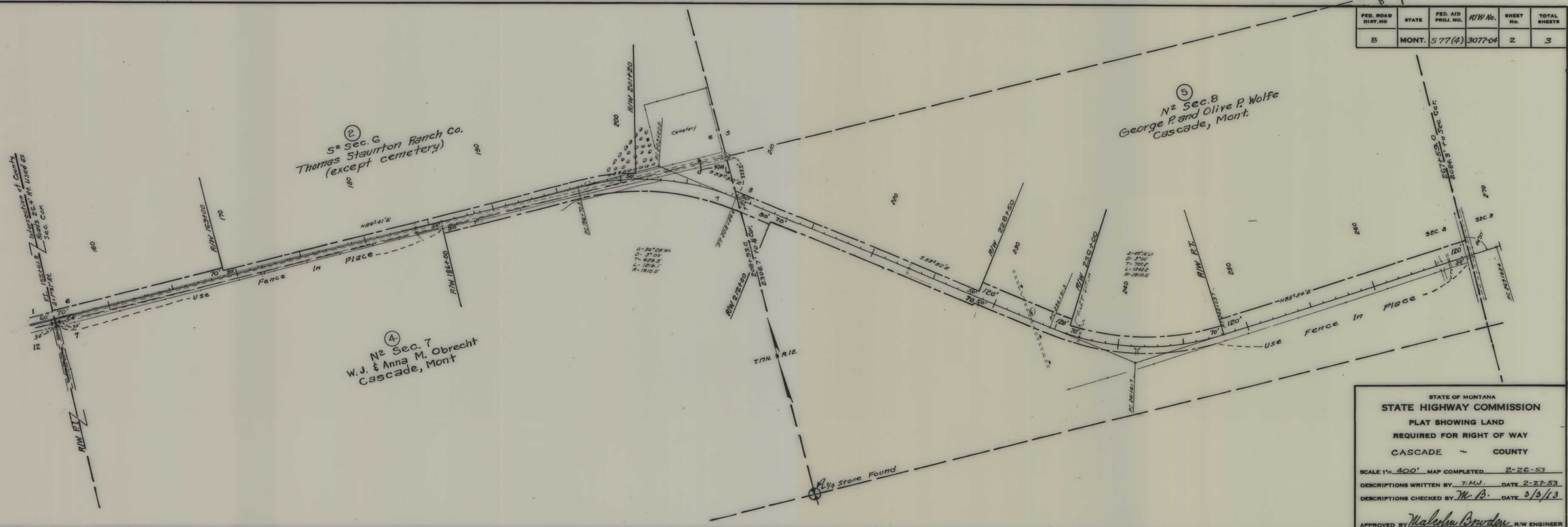
⑤
N² Sec. 8
George P. and Olive P. Wolfe
Cascade, Mont.

④
N² Sec. 7
W. J. & Anna M. Obrecht
Cascade, Mont.

Intersection of County
Roads Sec. 4. At Used as
Sec. 6. At
Sec. 7. At

4-30' 29" Ht
D- 3' 00"
T- 629.5'
L- 1218.1'
R- 1910.0'

4-40' Ht
D- 3' 00"
T- 700.8'
L- 1342.8'
R- 1810.0'



STATE OF MONTANA
STATE HIGHWAY COMMISSION
PLAT SHOWING LAND
REQUIRED FOR RIGHT OF WAY
CASCADE COUNTY

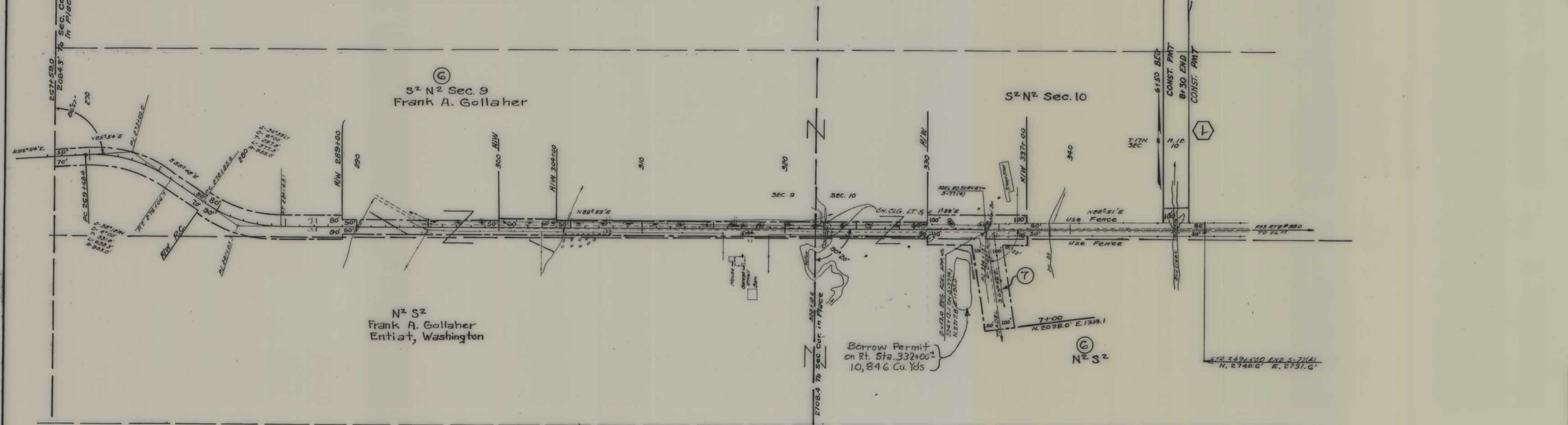
SCALE 1" = 400' MAP COMPLETED 2-26-53
 DESCRIPTIONS WRITTEN BY T.H.W. DATE 2-27-53
 DESCRIPTIONS CHECKED BY M.B. DATE 3/3/53

APPROVED BY *Malcolm Bowden* R/W ENGINEER

PARCEL	NAME	ADDRESS	CONST. PMT. AREA
1	MYRLE & GLADYS GOLLAHER	CASCADE, MONT.	0.41AC.

FED. ROAD DIST. NO.	STATE	FED. AID PROJ. NO.	R/W NO.	SHEET NO.	TOTAL SHEETS
8	MONT.	577(4)	3077-04	3	3

ER 226-1 (02) 081
 BIRD CREEK - FAS 330 E. OF CASCADE



STATE OF MONTANA
 STATE HIGHWAY COMMISSION
 PLAT SHOWING LAND
 REQUIRED FOR RIGHT OF WAY
 CASCADE COUNTY

SCALE 1" = 400' MAP COMPLETED 2-26-53
 DESCRIPTIONS WRITTEN BY T.H.J. DATE 2-28-53
 DESCRIPTIONS CHECKED BY M.P. DATE 3/3/53

APPROVED BY *Malcolm Bowden* R/W ENGINEER