

PLANS

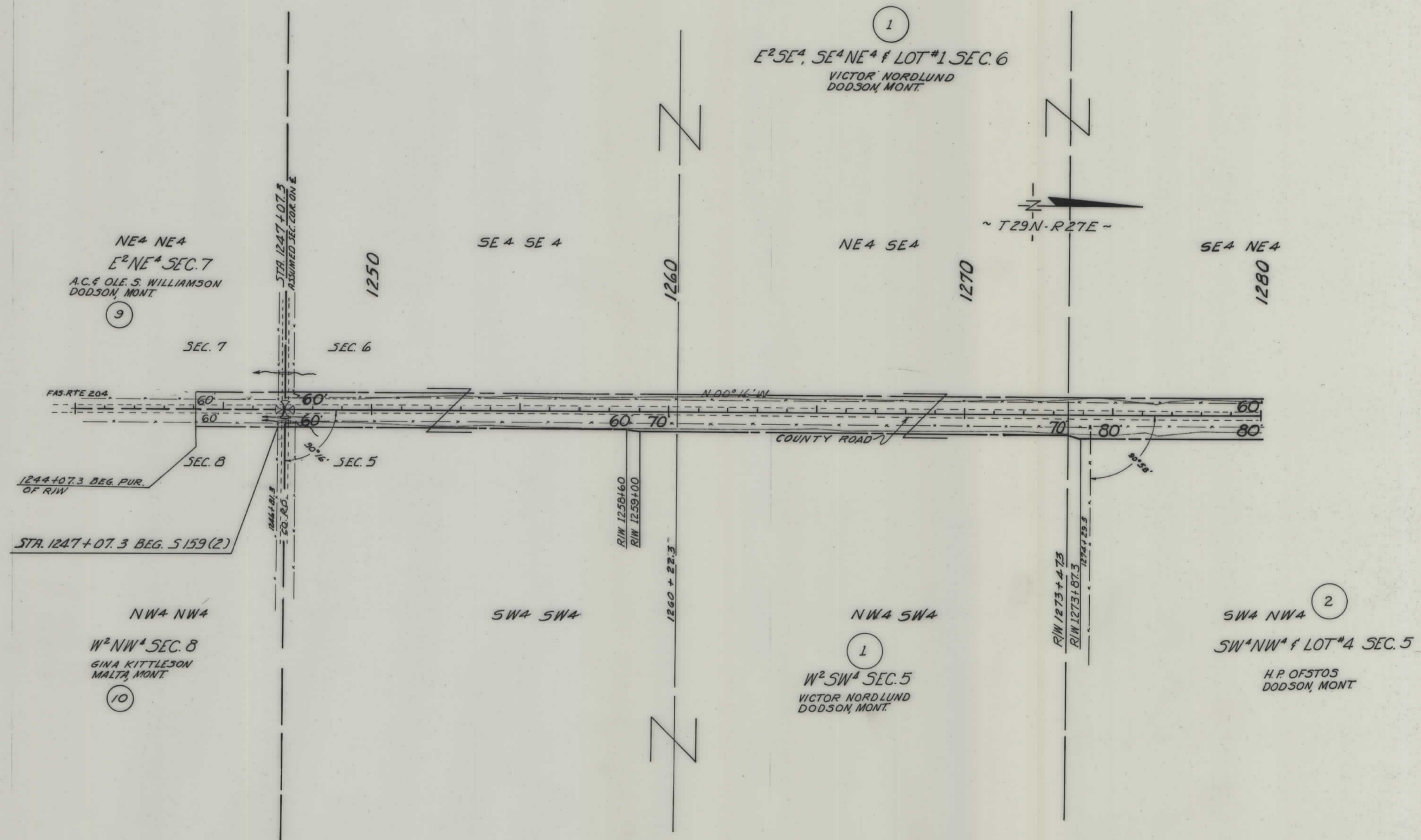
NOT

TO

SCALE

FED. ROAD DIST. NO.	STATE	FED. AID PROJECT NUMBERS		STATE NO.	SHEET NO.	TOTAL SHEETS
		CONST. NO.	R/W NO.			
8	MONT.		S-159 (3)	3159-03	1	5

DODSON - SOUTH



CONSTRUCTION LIMITS TOP OF CUT _____ TOE OF FILL _____	STATE OF MONTANA STATE HIGHWAY COMMISSION LAND REQUIRED FOR RIGHT OF WAY PHILLIPS COUNTY
MAP TRANS. TO R/W _____ MAP REVISED _____	SCALE 1"=200' MAP COMPLETED _____
B-E-R- APPROVAL 5/31/12-6/12/12	

FED. ROAD DIST. NO.	STATE	FED. AID PROJECT NUMBERS		STATE NO.	SHEET NO.	TOTAL SHEETS
		CONST. NO.	R/W NO.			
8	MONT.		S-159 (3)	3159-03	2	5

④  
 E<sup>2</sup>E<sup>2</sup> SEC. 31, NE<sup>4</sup>NE<sup>4</sup>, SE<sup>4</sup>SE<sup>4</sup> SEC. 30 &  
 E<sup>2</sup>SE<sup>4</sup> SEC. 19

JOSEPH. M. & JULIA HOLZHEY & M.A. SHAVER &  
 GEORGE L. & LOLA DAVIS  
 MALTA, MONT.

CONTR. OF SALE: JOSEPH M. & JULIA HOLZHEY  
 TO HAROLD & THELMA M<sup>rs</sup> BRIDE  
 DODSON, MONT.

①  
 SE<sup>4</sup>NE<sup>4</sup> & LOT #1 & E<sup>2</sup>SE<sup>4</sup> SEC. 6

VICTOR NORDLUND  
 DODSON, MONT.

NE<sup>4</sup>NE<sup>4</sup>  
 LOT #1

②  
 NW<sup>4</sup>NW<sup>4</sup>  
 LOT #4  
 SW<sup>4</sup>NW<sup>4</sup> & LOT #4 SEC. 5

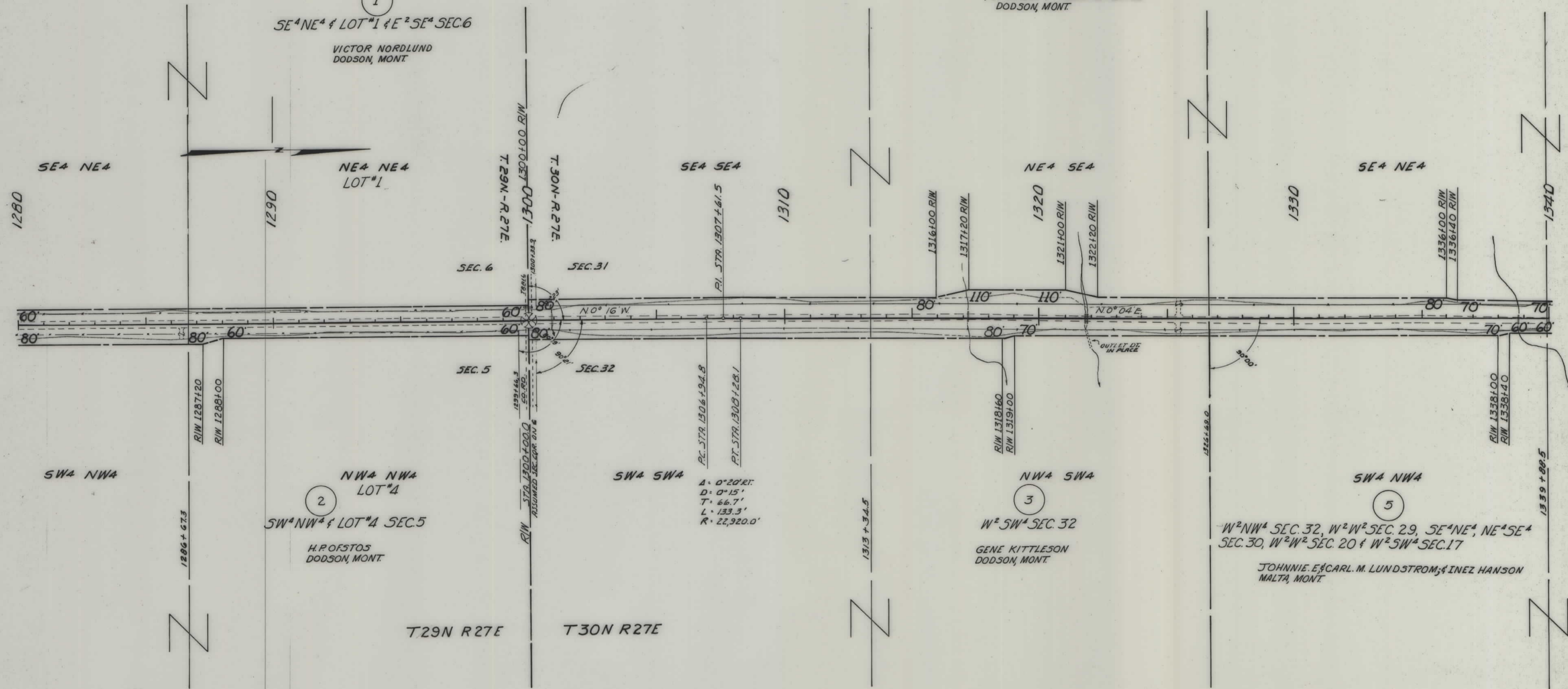
H. POFSTOS  
 DODSON, MONT.

③  
 NW<sup>4</sup>SW<sup>4</sup>  
 W<sup>2</sup>SW<sup>4</sup> SEC. 32

GENE KITTLESON  
 DODSON, MONT.

⑤  
 W<sup>2</sup>NW<sup>4</sup> SEC. 32, W<sup>2</sup>W<sup>2</sup> SEC. 29, SE<sup>4</sup>NE<sup>4</sup>, NE<sup>4</sup>SE<sup>4</sup>  
 SEC. 30, W<sup>2</sup>W<sup>2</sup> SEC. 20 & W<sup>2</sup>SW<sup>4</sup> SEC. 17

JOHNNIE E. & CARL M. LUNDSTROM, & INEZ HANSON  
 MALTA, MONT.

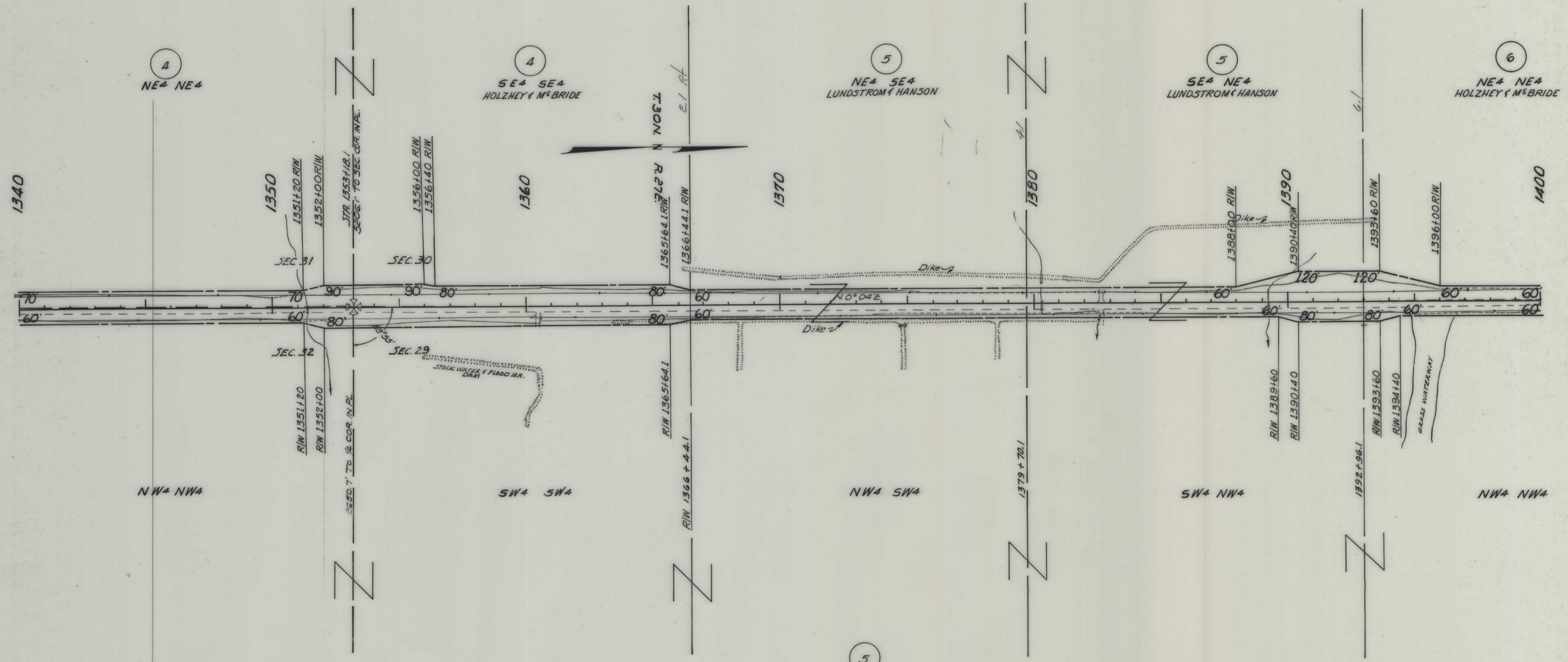


CONSTRUCTION LIMITS TOP OF CUT ——— TOE OF FILL - - - - - MAP TRANS. TO R/W _____ MAP REVISED _____ APPROVAL: 5/31/62	STATE OF MONTANA STATE HIGHWAY COMMISSION LAND REQUIRED FOR RIGHT OF WAY PHILLIPS COUNTY SCALE 1"=200' MAP COMPLETED _____
---	--

FED. PROJ. NO.	STATE	FED. AID DIST. NO.	FED. AID PROJ. NO.	STATE PROJ. NO.	SHEET NO.	TOTAL SHEETS
	MONT.		S-159 (3)	3159-03	3	5

4 6  
 E<sup>2</sup>E<sup>2</sup> SEC. 31, NE<sup>4</sup>NE<sup>4</sup>, SE<sup>4</sup>SE<sup>4</sup> SEC. 30 &  
 E<sup>2</sup>SE<sup>4</sup> SEC. 19

JOSEPH. M. & JULIA HOLZHEY & M.A. SHAVER &  
 GEORGE L. & LOLA DAVIS  
 MALTA, MONT.  
 CONTR. OF SALE: JOSEPH. M. & JULIA HOLZHEY  
 TO HAROLD & THELMA M<sup>rs</sup> BRIDE  
 DODSON, MONT.



5  
 W<sup>2</sup>NW<sup>4</sup> SEC. 32, W<sup>2</sup>W<sup>2</sup> SEC. 29, SE<sup>4</sup>NE<sup>4</sup>, NE<sup>4</sup>SE<sup>4</sup> SEC. 30,  
 W<sup>2</sup>W<sup>2</sup> SEC. 20 & W<sup>2</sup>SW<sup>4</sup> SEC. 17

JOHNNIE. E. & CARL LUNDSTROM, & INEZ HANSON  
 MALTA, MONT.

CONSTRUCTION LIMITS TOP OF CUT _____ TOE OF FILL _____	STATE OF MONTANA STATE HIGHWAY COMMISSION LAND REQUIRED FOR RIGHT OF WAY PHILLIPS COUNTY
MAP TRANS. TO R/W _____ MAP REVISED _____ APPROVAL 5/21/62	SCALE 1"=200' MAP COMPLETED _____

FED. ROAD DIST. NO.	STATE	FED. AID PROJECT NUMBERS		STATE NO.	SHEET NO.	TOTAL SHEETS
		CONST. NO.	R/W NO.			
8	MONT.		S-159(3)	3159-03	4	5

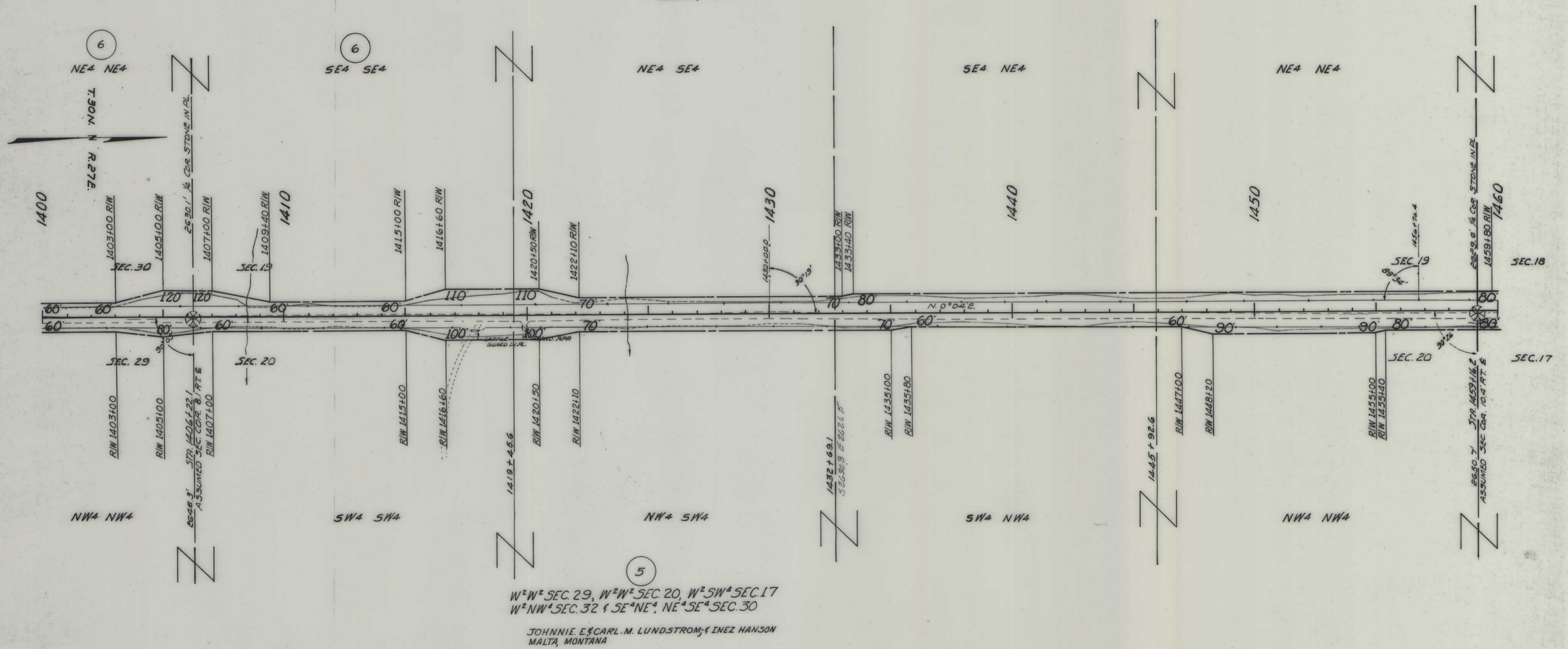
6  
 E<sup>2</sup>E<sup>2</sup> SEC. 31, NE<sup>4</sup>NE<sup>4</sup>, SE<sup>4</sup>SE<sup>4</sup> SEC. 30  
 & E<sup>2</sup>SE<sup>4</sup> SEC. 19

JOSEPH. M. & JULIA HOLZHEY & M.A. SHAVER  
 & GEORGE L. & LOLA DAVIS  
 MALTA, MONT.

CONTR. OF SALE: JOSEPH. M. & JULIA HOLZHEY  
 TO HAROLD & THELMA M<sup>RS</sup>BRIDE  
 DODSON, MONT.

7  
 E<sup>2</sup>NE<sup>4</sup> SEC. 19 & E<sup>2</sup>SE<sup>4</sup> SEC. 18

ERNEST DOPP  
 MALTA, MONT.



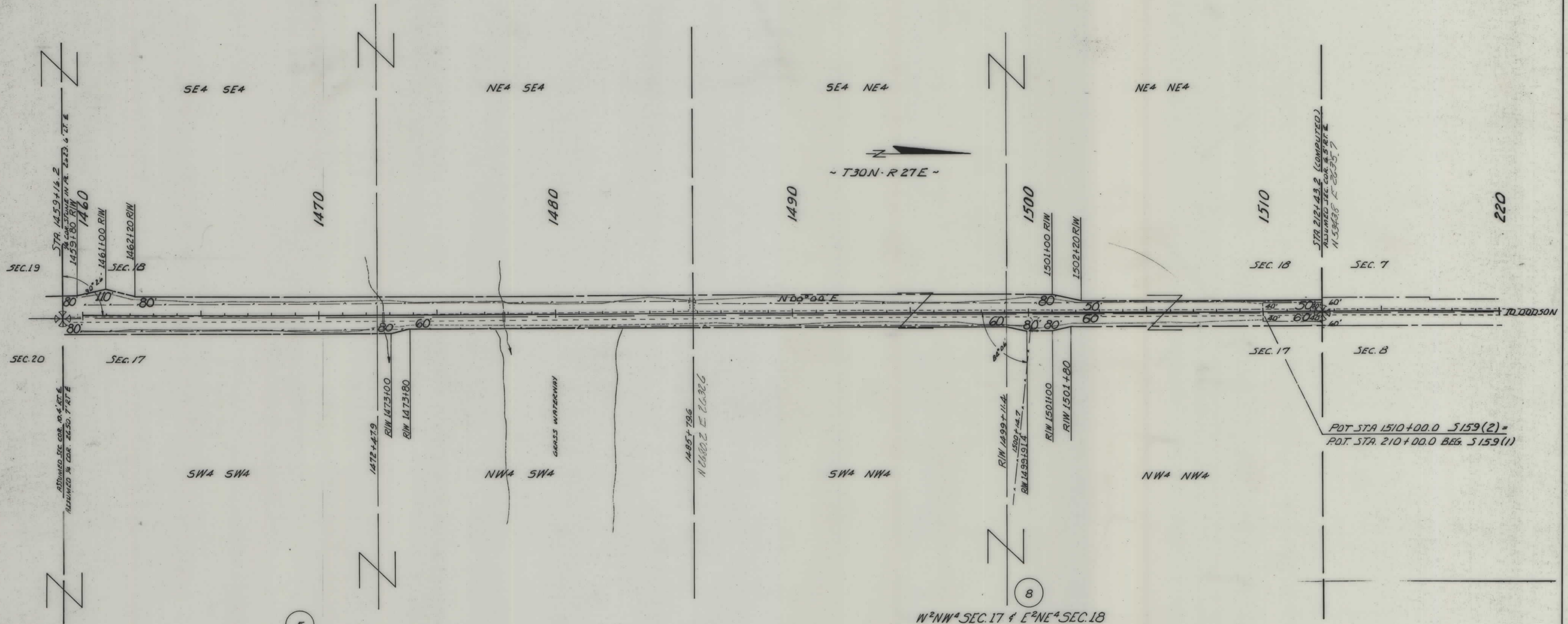
5  
 W<sup>2</sup>W<sup>2</sup> SEC. 29, W<sup>2</sup>W<sup>2</sup> SEC. 20, W<sup>2</sup>SW<sup>4</sup> SEC. 17  
 W<sup>2</sup>NW<sup>4</sup> SEC. 32 & SE<sup>4</sup>NE<sup>4</sup>, NE<sup>4</sup>SE<sup>4</sup> SEC. 30

JOHNNIE. E. & CARL. M. LUNDSTROM, & INEZ HANSON  
 MALTA, MONTANA

CONSTRUCTION LIMITS TOP OF CUT TOE OF FILL	STATE OF MONTANA STATE HIGHWAY COMMISSION LAND REQUIRED FOR RIGHT OF WAY PHILLIPS COUNTY
MAP TRANS. TO R/W MAP REVISED	SCALE 1"=200' MAP COMPLETED
APPROVAL 5/31/62	

FED ROAD ST NO	STATE	FED AID PROJ. NO. & AMOUNTS		STATE NO	SHEET NO	TOTAL SHEETS
		CONST NO	F A M T			
8	MONT		5-159 (3)	3159-03	5	5

7  
E<sup>2</sup>SE<sup>4</sup> SEC. 18 & E<sup>2</sup>NE<sup>4</sup> SEC. 19  
ERNEST DOPP  
MALTA, MONT



5  
W<sup>2</sup>SW<sup>4</sup> SEC. 17, W<sup>2</sup>W<sup>2</sup> SEC. 20, W<sup>2</sup>W<sup>2</sup> SEC. 29  
SE<sup>4</sup>NE<sup>4</sup>, NE<sup>4</sup>SE<sup>4</sup> SEC. 30 & W<sup>2</sup>NW<sup>4</sup> SEC. 32.  
JOHNNIE E., CARL M. LUNDSTROM & INEZ HANSON  
MALTA, MONTANA

8  
W<sup>2</sup>NW<sup>4</sup> SEC. 17 & E<sup>2</sup>NE<sup>4</sup> SEC. 18  
MARIE J. LARWICK  
%ALLAN FINSETH  
KENYON, MINNESOTA

POT. STA. 1510+00.0 5159(2) =  
POT. STA. 210+00.0 BEG. 5159(1)

CONSTRUCTION LIMITS TOP OF CUT _____ TOE OF FILL _____	STATE OF MONTANA STATE HIGHWAY COMMISSION LAND REQUIRED FOR RIGHT OF WAY PHILLIPS COUNTY
MAP TRANS. TO R/W _____ MAP REVISED _____	
APPROVAL: 5/21/42 - 6/12/42	
SCALE 1"=200' MAP COMPLETED	