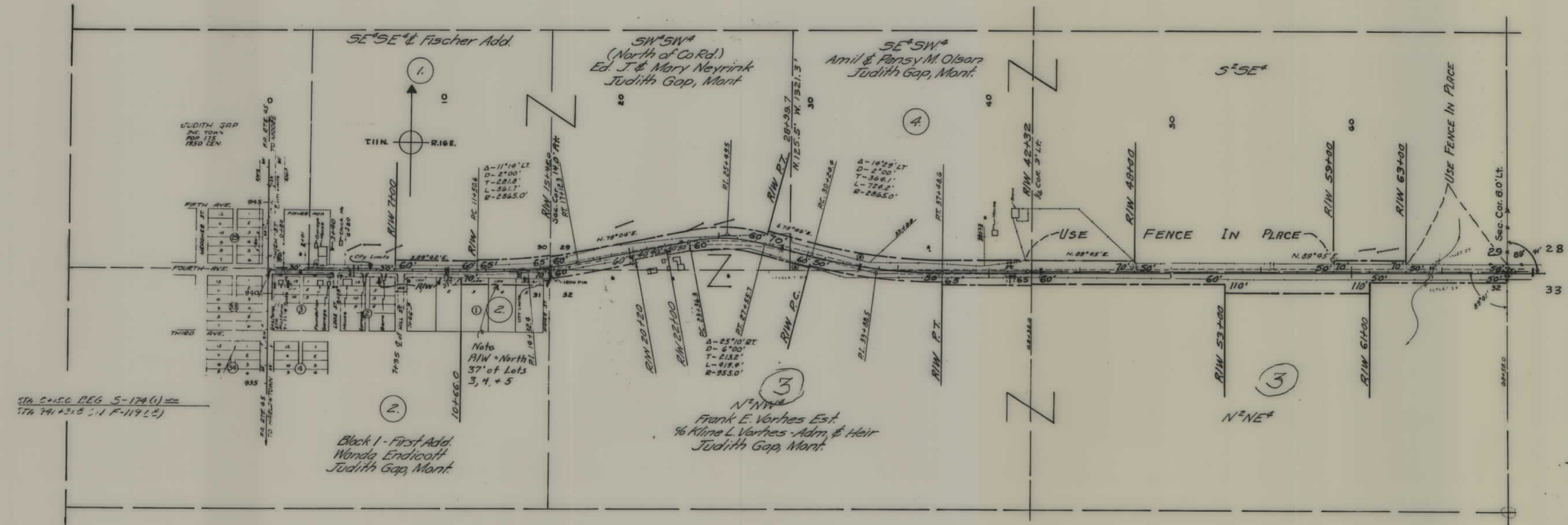


PLANS
NOT
TO
SCALE

FED ROAD DIST. NO.	STATE	FED AID PROJ. NO.	R/W NO.	SHEET NO.	TOTAL SHEETS
8	MONT.	S-174(1)	3174-01	1	4

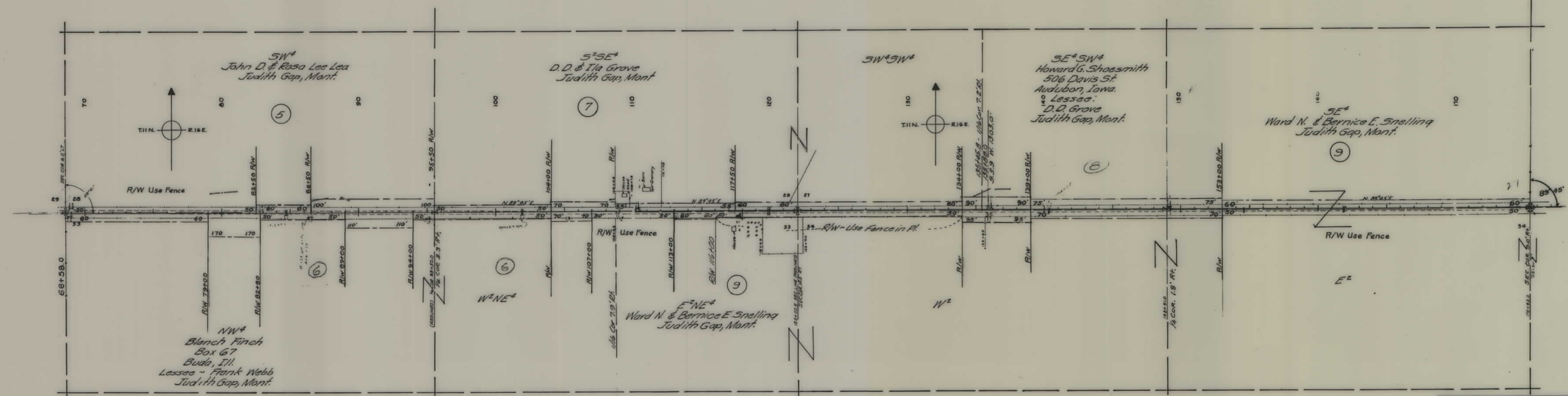
Construction Contract Awarded July 30, 1954



STA 2+50 REG. S-174(1) ==
STA 741+315 S.I. F-119(L)

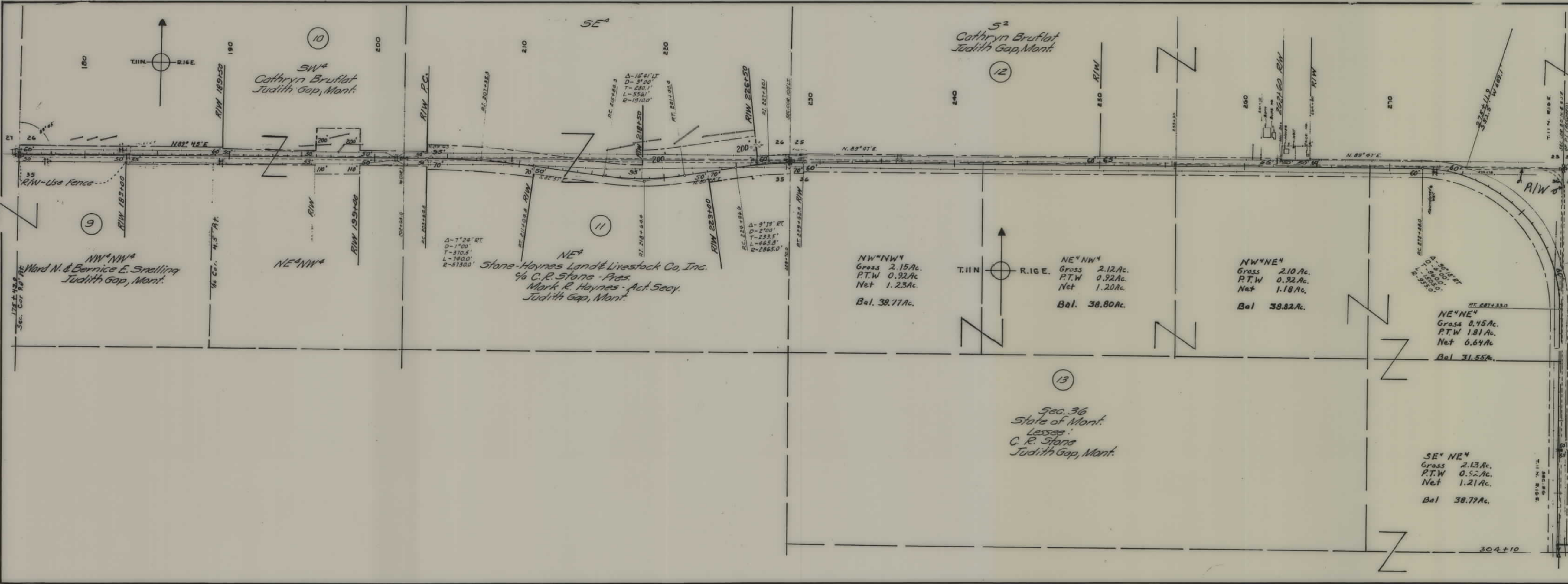
STATE OF MONTANA
 STATE HIGHWAY COMMISSION
 LAND REQUIRED FOR RIGHT OF WAY
 WHEATLAND COUNTY
 SCALE 1"= 400' MAP COMPLETED 6-12-54

FED. ROAD DIST. NO.	STATE	FED. AID PROJ. NO.	R/W NO.	SHEET NO.	TOTAL SHEETS
8	MONT.	S-174 (1)	3174-01	2	4



STATE OF MONTANA
 STATE HIGHWAY COMMISSION
 LAND REQUIRED FOR RIGHT OF WAY
 WHEATLAND COUNTY
 SCALE 1" = 400' MAP COMPLETED 6-12-54

FED. ROAD DIST. NO.	STATE	FED. AID PROJ. NO.	R/W NO.	SHEET NO.	TOTAL SHEETS
	MONT.	5-174(1)	3174-01	3	4



STATE OF MONTANA
STATE HIGHWAY COMMISSION

PLAT SHOWING LAND
REQUIRED FOR RIGHT OF WAY

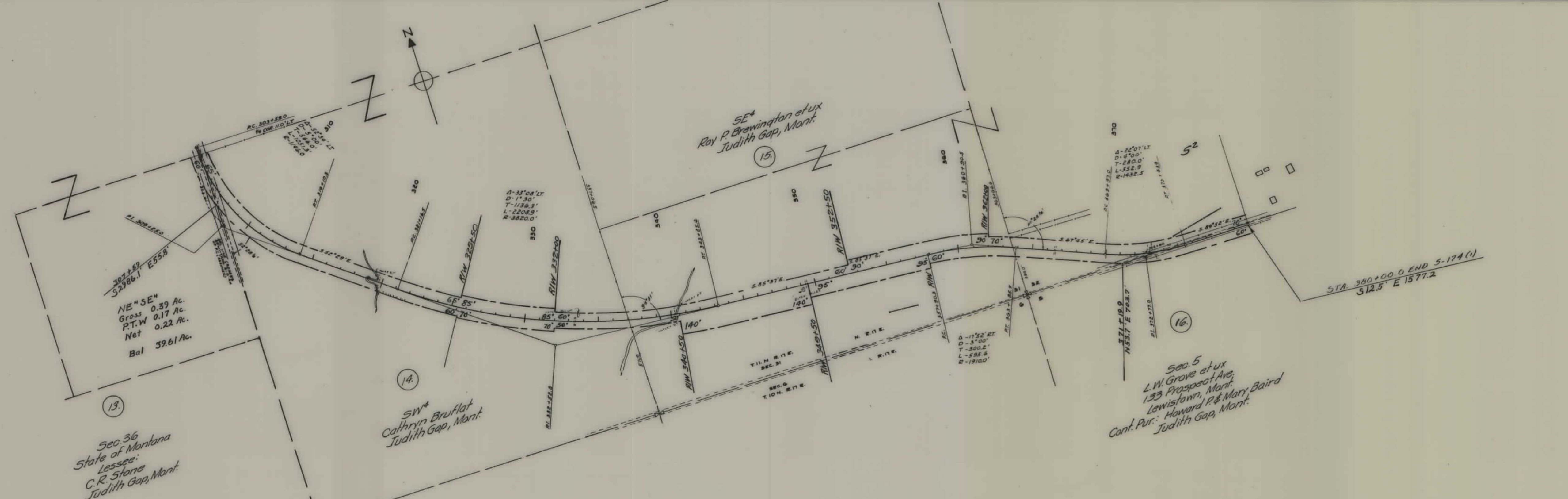
300 WHEATLAND COUNTY

SCALE 1" = 400' MAP COMPLETED 6-12-54

DESCRIPTIONS WRITTEN BY _____ DATE _____

APPROVED BY _____ R/W ENGINEER

FED. ROAD DIST. NO.	STATE	FED. AID PROJ. NO.	R/W NO.	SHEET NO.	TOTAL SHEETS
8	MONT.	S-174(1)	3174-01	4	4



STA. 360+00.0 END S-174(1)
S 12.5° E 1577.2

STATE OF MONTANA
 STATE HIGHWAY COMMISSION
 LAND REQUIRED FOR RIGHT OF WAY
 WHEATLAND COUNTY
 SCALE 1" = 400' MAP COMPLETED 6-12-54

