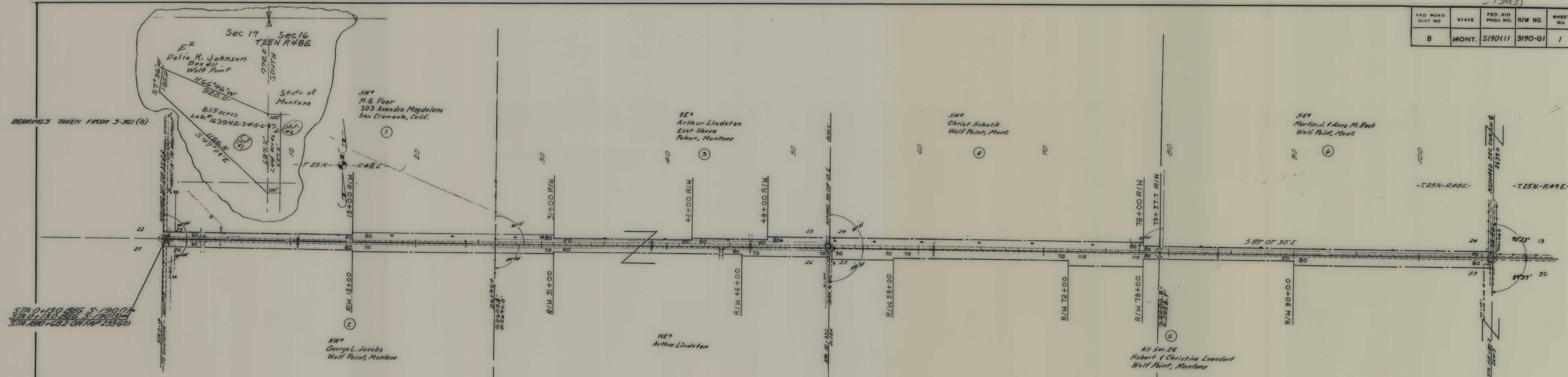


PLANS
NOT
TO
SCALE

190(3)

FED. ROAD DIST. NO.	STATE	FED. AID PROJ. NO.	R/W NO.	SHEET NO.	TOTAL SHEETS
8	MONT.	S190(1)	3190-01	1	5

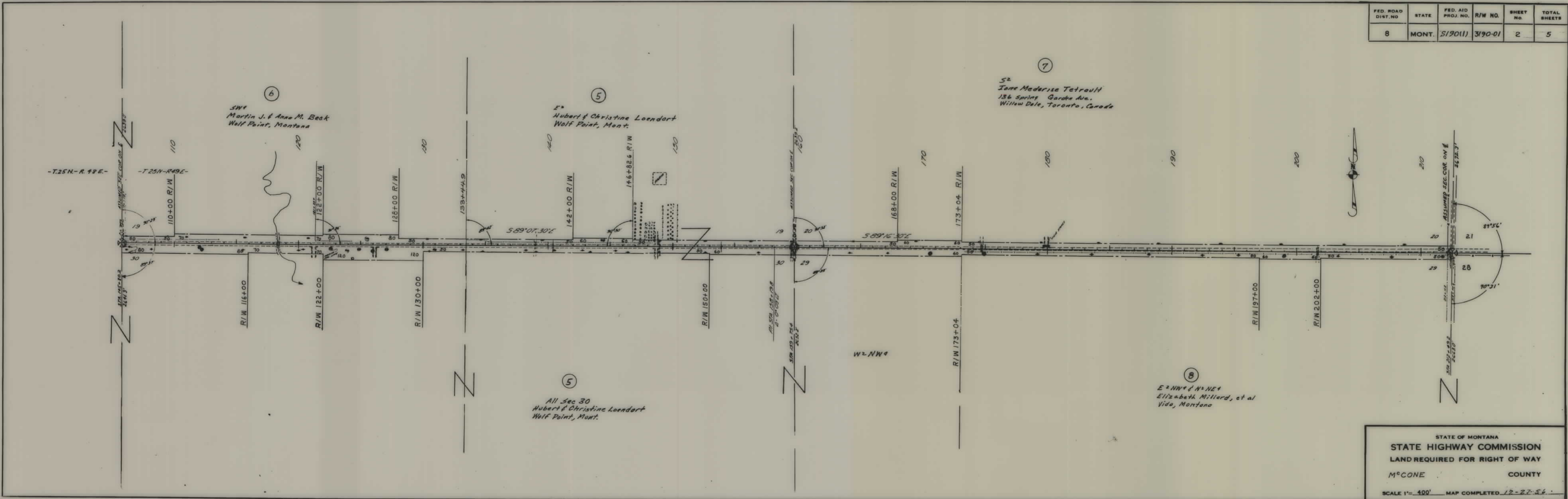


BEARINGS TAKEN FROM 3-361 (9)

STA 0+130 BEG 5-190(1)
 STA 0+130 BEG 5-190(2)
 STA 180+68.2 ON MAP 2536(1)

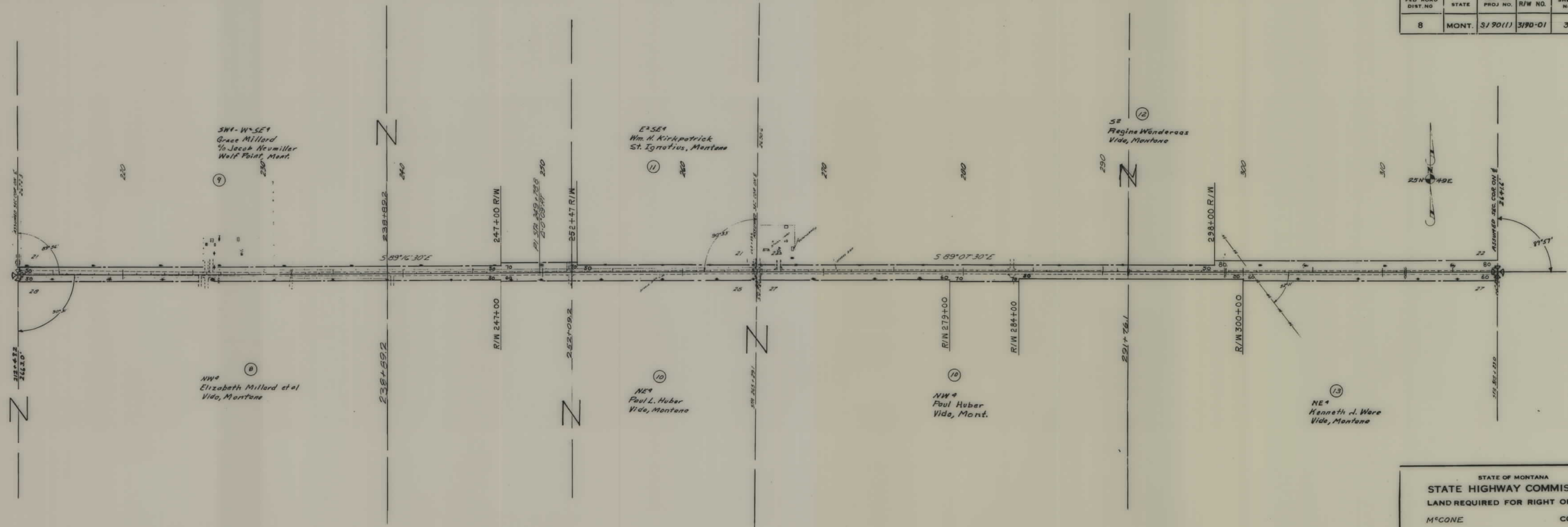
STATE OF MONTANA
 STATE HIGHWAY COMMISSION
 LAND REQUIRED FOR RIGHT OF WAY
 M^cONE COUNTY
 SCALE 1" = 400' MAP COMPLETED 12-22-56

FED. ROAD DIST. NO.	STATE	FED. AID PROJ. NO.	R/W NO.	SHEET NO.	TOTAL SHEETS
8	MONT.	S190(1)	3190-01	2	5



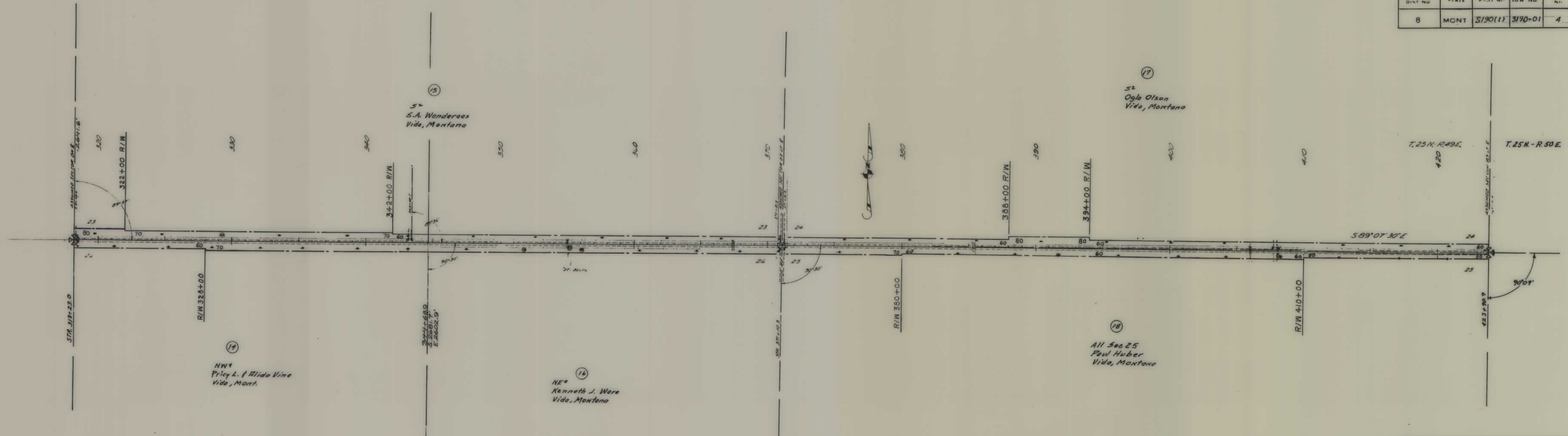
STATE OF MONTANA
STATE HIGHWAY COMMISSION
 LAND REQUIRED FOR RIGHT OF WAY
 M^oCONE COUNTY
 SCALE 1" = 400' MAP COMPLETED 12-27-54

FED. ROAD DIST. NO.	STATE	FED. AID PROJ. NO.	R/W NO.	SHEET NO.	TOTAL SHEETS
8	MONT.	S190(1)	3190-01	3	5



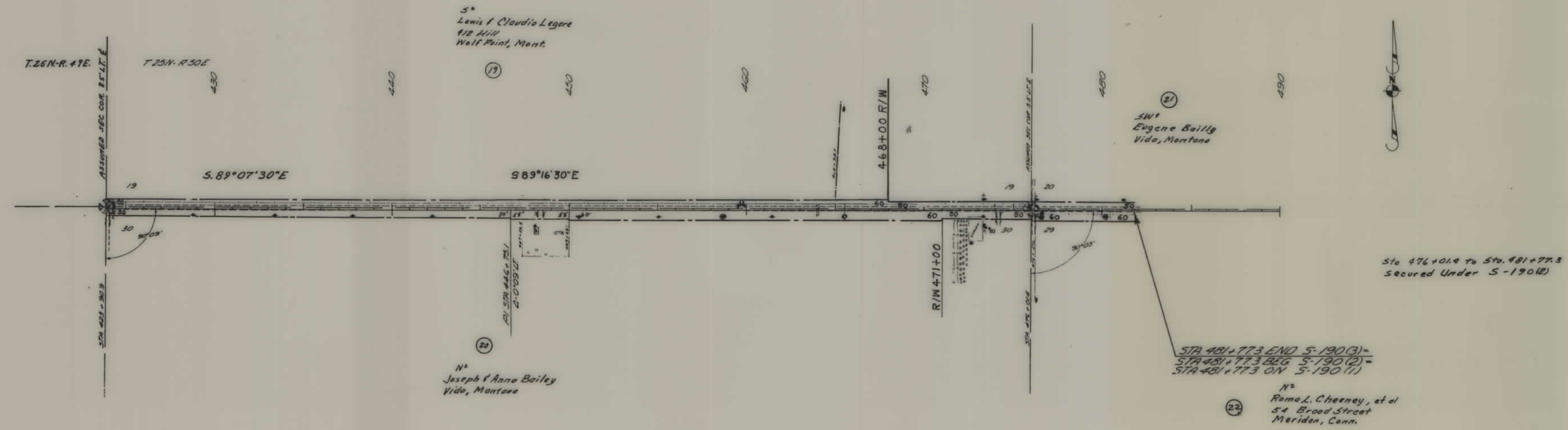
STATE OF MONTANA
 STATE HIGHWAY COMMISSION
 LAND REQUIRED FOR RIGHT OF WAY
 M^cONE COUNTY
 SCALE 1" = 400' MAP COMPLETED 12-27-56

FED. ROAD DIST. NO.	STATE	FED. AID P.C. NO.	R/W NO.	SHEET NO.	TOTAL SHEETS
8	MONT	5190(1)	3190-01	4	5



STATE OF MONTANA
 STATE HIGHWAY COMMISSION
 LAND REQUIRED FOR RIGHT OF WAY
 M^CONE COUNTY
 SCALE 1" = 400' MAP COMPLETED 12-27-56

FED. ROAD DIST. NO.	STATE	FED. AID PROJ. NO.	R/W NO.	SHEET NO.	TOTAL SHEETS
8	MONT	S190(1)	3190-01	5	5



STATE OF MONTANA
 STATE HIGHWAY COMMISSION
 LAND REQUIRED FOR RIGHT OF WAY
 M^o CONE COUNTY
 SCALE 1" = 400' MAP COMPLETED 12-27-56