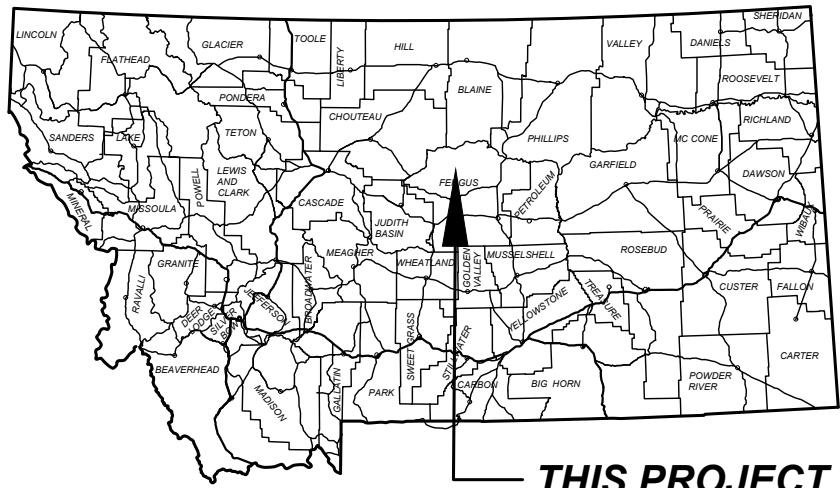


MONTANA DEPARTMENT OF TRANSPORTATION



RIGHT OF WAY PLAN FEDERAL AID PROJECT STPX STW-0(101) D5 CULVERTS - MISSOURI BREAKS (D5 CULVERTS - WINIFRED AREA) FERGUS COUNTY LENGTH N/A MILES

GRID STATE PLANE COORDINATES
THIS IS A STATE PLANE COORDINATE PROJECT. ALL DIMENSIONS, DISTANCES AND AREAS ON THIS PROJECT ARE GRID. EXCEPT FOR THE EXISTING RW WIDTH DIMENSION, WHICH IS RECORD.
THE COMBINATION SCALE FACTOR IS (SEE PLAN SHEETS)

D5 CULVERTS - MISSOURI BREAKS

PROJECT NAME
(D5 CULVERTS - WINIFRED AREA)

COUNTY
FERGUS

PROJECT ID
STPX STW-0(101)

UPN
10391-101-001

FHWA/MDT APPROVAL: 02/13/2026

MAP REVISED:

10391001ROTTL001.DWG
4/23/2026 1:16 PM



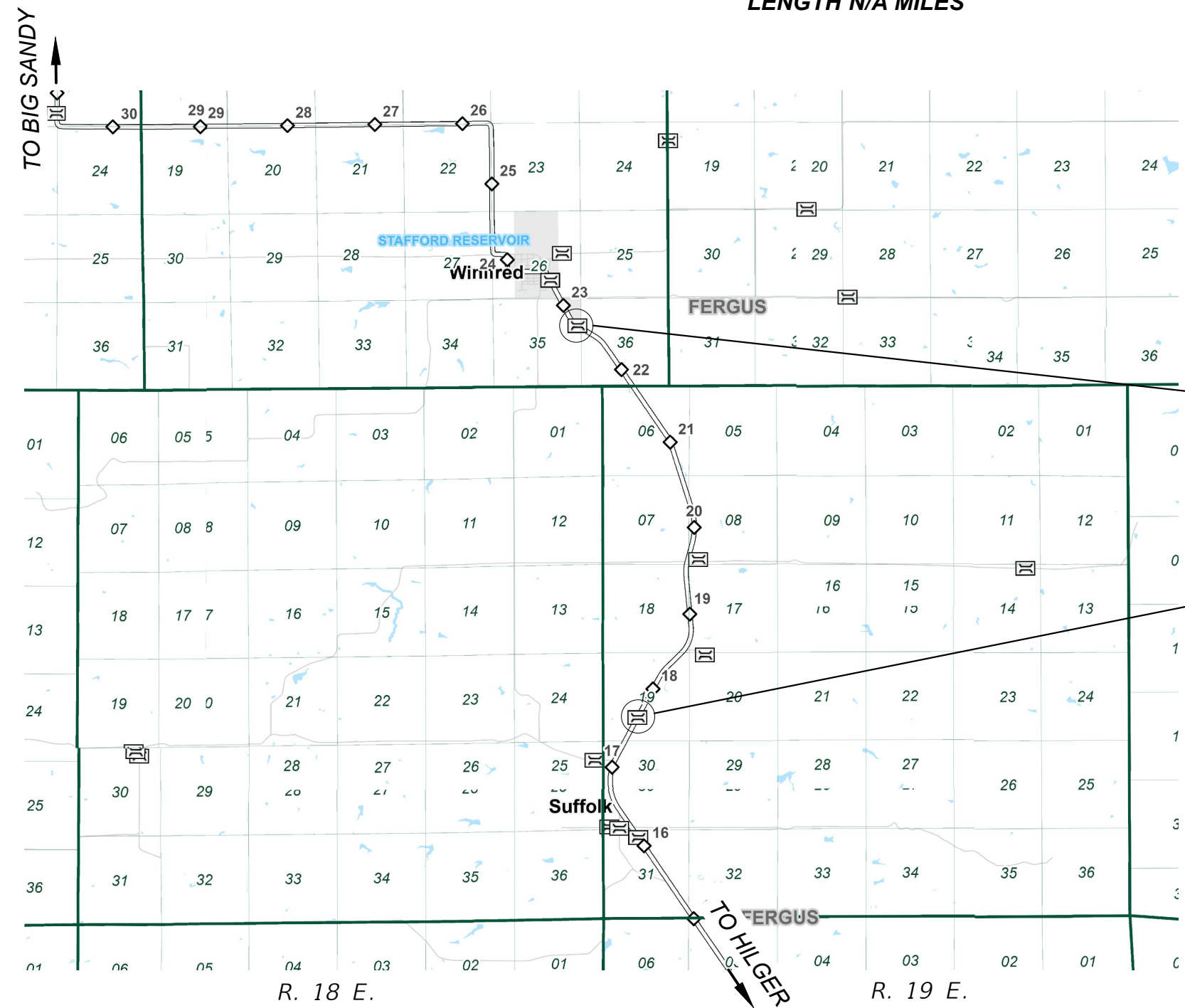
RIGHT OF WAY PLAN

PLAN LEGEND

- PROPOSED RIGHT OF WAY LINE
- EXISTING RIGHT OF WAY LINE
- RAILROAD RIGHT OF WAY LINE
- RIGHT OF WAY BASELINE
- SECTION LINE
- OWNERSHIP BOUNDARY
- FULL ACCESS CONTROL
- LIMITED ACCESS CONTROL
- EXISTING FULL ACCESS CONTROL
- EXISTING LIMITED ACCESS CONTROL
- SECTION CORNER
- 1/4 SECTION CORNER
- CLOSING CORNER
- MEANDER CORNER
- CENTER OF SECTION
- 1/8 SECTION CORNER FOUND
- RIGHT OF WAY MONUMENT
- PROPERTY CORNER PIN
- PARCEL NUMBERS
- RAILROADS
- EXISTING DITCH
- CONSTRUCTION LIMITS
- CUT SECTION
- TOE OF FILL

ASSOCIATED PROJECT AGREEMENT NUMBERS	
R/W	STPX STW-0(101)
I. C.	
P. E.	STPP STWD(971)

RELATED PROJECTS	
S 68(3)	
RS 236-1(7)0	



SITE 7
STA. 1212+33 RP 22.7 - DOG CR.
14' 1" X 8' 9" X 91' DBL SSPA IN PL.
REMOVE
NEW 12' X 13' DBL RCB
NBI# 000000202508113
MDT ID# 08113
(THIS CONTRACT)

SITE 12
STA. 942+43 RP 17.7 - DOG CR.
12' 6" X 7' 11" X 95' DBL SSPA IN PL.
REMOVE
NEW 10' X 12' DBL RCB
NBI# 00000020258115
MDT ID# 08115
(THIS CONTRACT)

FOR EXISTING R/W RETRACEMENT, SEE C.O.S. 1240 AND C.O.S. 1241

GRID STATE PLANE COORDINATES
THIS IS A STATE PLANE COORDINATE PROJECT. ALL DIMENSIONS, DISTANCES AND AREAS ON THIS PROJECT ARE GRID. EXCEPT FOR THE EXISTING RW WIDTH DIMENSION, WHICH IS RECORD.
THE COMBINATION SCALE FACTOR IS 0.999284022

D5 CULVERTS - MISSOURI BREAKS

PROJECT NAME
(D5 CULVERTS - WINIFRED AREA)

COUNTY
FERGUS

PROJECT ID
STPX STW-0(101)

UPN
10391-101-001

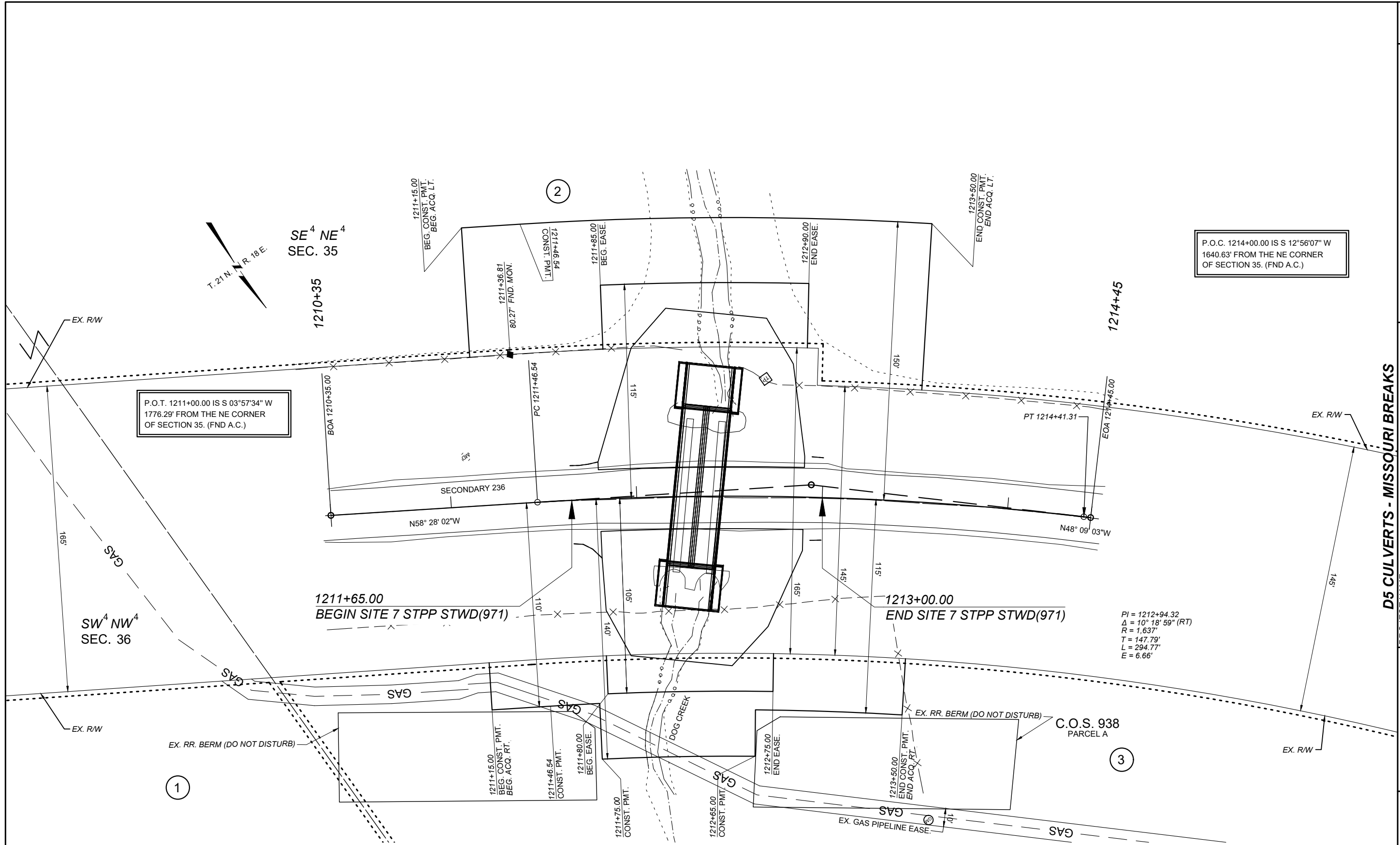
FHW/MDT APPROVAL: 02/13/2026

MAP REVISED:

MONTANA
Department of Transportation

RIGHT OF WAY PLAN

4/23/2026 1:17 PM



P.O.T. 1211+00.00 IS S 03°57'34" W
1776.29' FROM THE NE CORNER
OF SECTION 35. (FND A.C.)

P.O.C. 1214+00.00 IS S 12°56'07" W
1640.63' FROM THE NE CORNER
OF SECTION 35. (FND A.C.)

PI = 1212+94.32
Δ = 10° 18' 59" (RT)
R = 1,637'
T = 147.79'
L = 294.77'
E = 6.66'

FOR EXISTING R/W RETRACEMENT, SEE
C.O.S. 1240 AND C.O.S. 1241

- NOTES
1. THE PROPOSED R/W LINE WHERE A SPIRAL CURVE TRANSITION IS USED IS A CHORD RATHER THAN A CONCENTRIC CURVE.
 2. ALL STATIONS AND OFFSETS FOR R/W BREAKS ARE IN REFERENCE TO THE R/W BASELINE.



