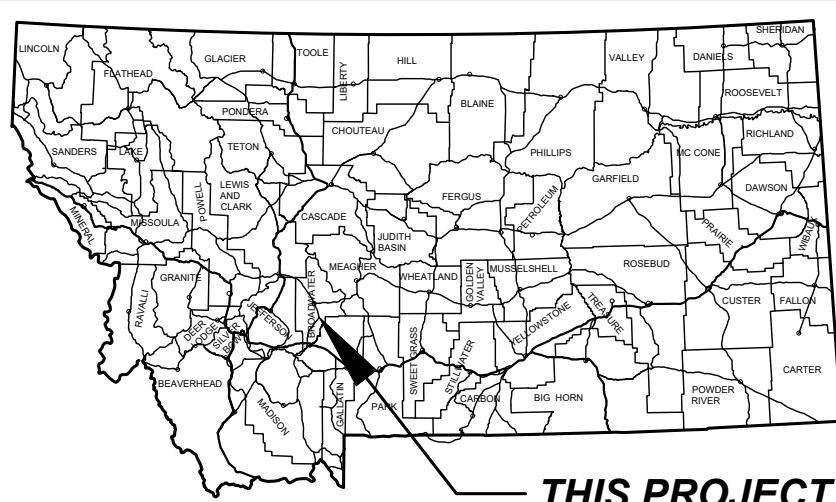


GRID STATE PLANE COORDINATES
 THIS IS A STATE PLANE COORDINATE PROJECT. ALL DIMENSIONS, DISTANCES AND AREAS ON THIS PROJECT ARE GRID. EXCEPT FOR THE EXISTING RW WIDTH DIMENSION, WHICH IS RECORD.
 THE COMBINATION SCALE FACTOR IS 0.999311301.

MONTANA DEPARTMENT OF TRANSPORTATION

RIGHT OF WAY PLAN FEDERAL AID PROJECT STPB 9004(25) BRIDGE REMOVAL - W OF TOSTON BROADWATER COUNTY

LENGTH 0.15 MILES



THIS PROJECT

PLAN LEGEND

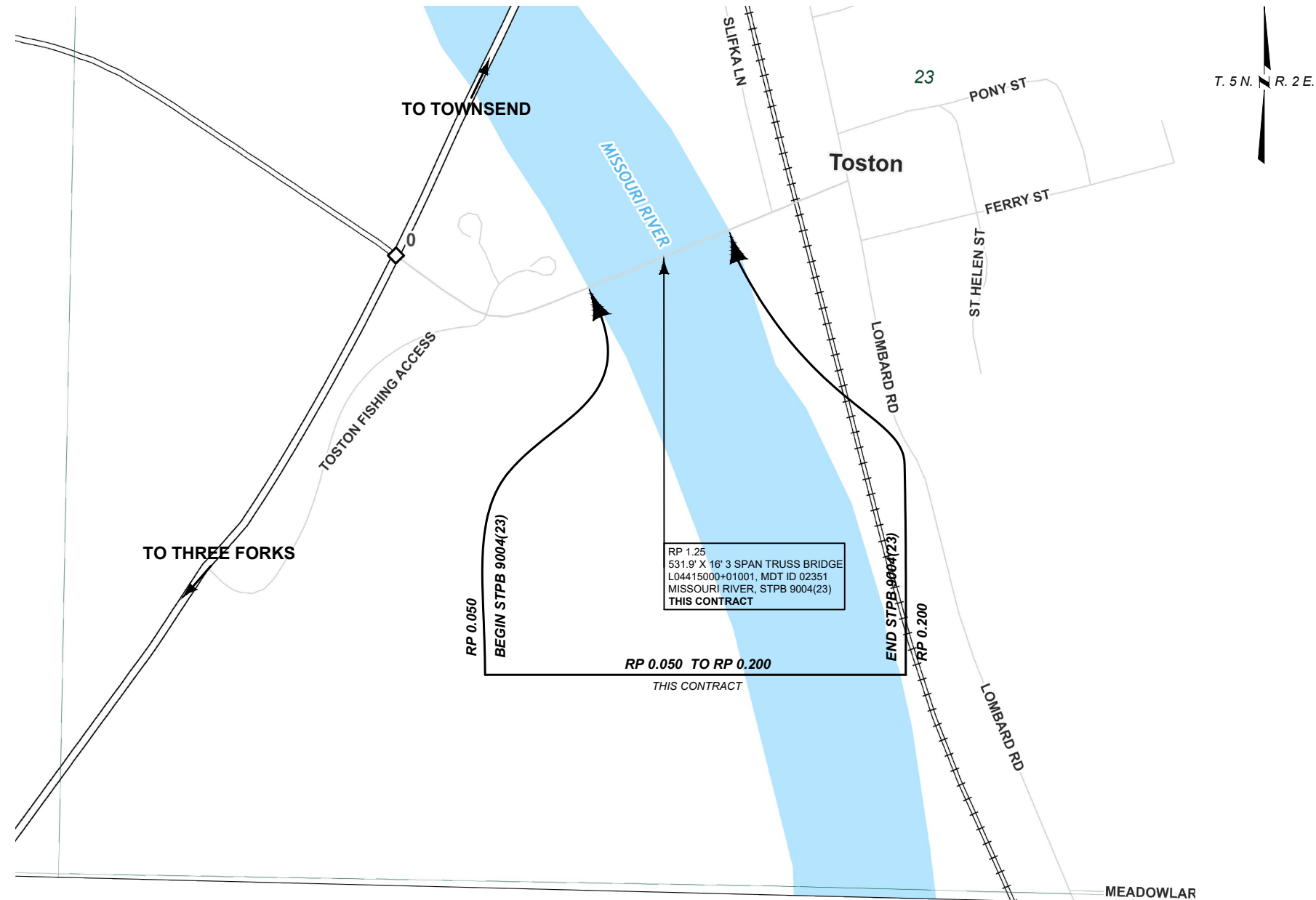
- PROPOSED RIGHT OF WAY LINE
- EXISTING RIGHT OF WAY LINE
- RAILROAD RIGHT OF WAY LINE
- RIGHT OF WAY BASELINE
- SECTION LINE
- OWNERSHIP BOUNDARY
- FULL ACCESS CONTROL
- LIMITED ACCESS CONTROL
- EXISTING FULL ACCESS CONTROL
- EXISTING LIMITED ACCESS CONTROL
- SECTION CORNER
- FOUND SECTION CORNER
- UNFOUND SECTION CORNER
- CLOSING CORNER
- MEANDER CORNER
- CENTER OF SECTION
- 1/8 SECTION CORNER FOUND
- RIGHT OF WAY MONUMENT
- PROPERTY CORNER PIN
- PARCEL NUMBERS
- RAILROADS
- EXISTING DITCH
- CONSTRUCTION LIMITS
- CUT SECTION
- TOE OF FILL

ASSOCIATED PROJECT AGREEMENT NUMBERS

R/W	STPB 9004(25)
I. C.	
P. E.	STPB 4(22)

RELATED PROJECTS

- NH 8-4(43)78 F
- NH 8-4(69)89
- FAP 204B
- FAP 204C
- S 86(1)
- F 204(6)
- F 206(7)



T. 5 N. R. 2 E.

RP 1.25
 531.9' X 16' 3 SPAN TRUSS BRIDGE
 L04415000+01001, MDT ID 02351
 MISSOURI RIVER, STPB 9004(23)
 THIS CONTRACT

RP 0.050 TO RP 0.200
 THIS CONTRACT

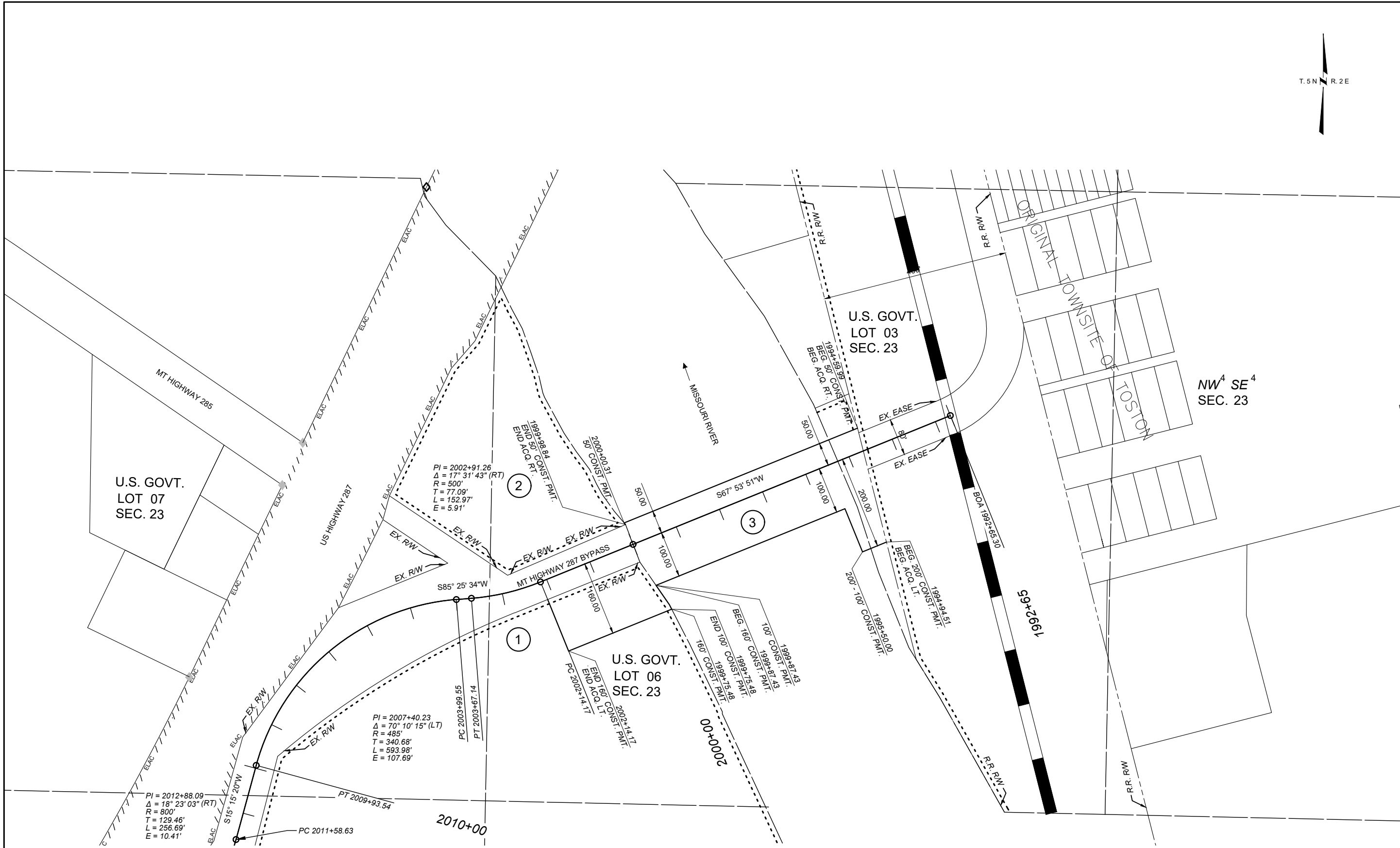
FOR EXISTING R/W RETRACEMENT, SEE
 C.O.S. 171719.

PROJECT NAME
BRIDGE REMOVAL - W OF TOSTON
 COUNTY
BROADWATER COUNTY
 PROJECT ID
STPB 9004(25)
 UPN
10557-025-000

FHW/MDT APPROVAL: 09/17/2025
 MAP REVISED: 9/25/2025
 10557000ROTTL001.DWG



GRID STATE PLANE COORDINATES
THIS IS A STATE PLANE COORDINATE PROJECT. ALL DIMENSIONS, DISTANCES AND AREAS ON THIS PROJECT ARE GRID. EXCEPT FOR THE EXISTING RW WIDTH DIMENSION, WHICH IS RECORD.
THE COMBINATION SCALE FACTOR IS 0.999311301.



FOR EXISTING R/W RETRACEMENT, SEE C.O.S. 171719.

- NOTES
1. THE PROPOSED R/W LINE WHERE A SPIRAL CURVE TRANSITION IS USED IS A CHORD RATHER THAN A CONCENTRIC CURVE.
 2. ALL STATIONS AND OFFSETS FOR R/W BREAKS ARE IN REFERENCE TO THE R/W BASELINE.



PROJECT NAME
BRIDGE REMOVAL - W OF TOSTON

COUNTY
BROADWATER COUNTY

PROJECT ID
STPB 9004(25)

UPN
10557-025-000

FHWA/MDT APPROVAL: 09/17/2025

MAP REVISED: 9/25/2025
3/31/2026

10557000ROPLN001.DWG



RIGHT OF WAY PLAN

3/31/2026 3:04 PM