

GRID STATE PLANE COORDINATES  
THIS IS A STATE PLANE COORDINATE PROJECT. ALL DIMENSIONS, DISTANCES AND AREAS ON THIS PROJECT ARE GRID. EXCEPT FOR THE EXISTING RW WIDTH DIMENSION, WHICH IS RECORD.  
THE COMBINATION SCALE FACTOR IS 0.9993997

PROJECT NAME  
**MT 200 DRAINAGE-EVANS PROPERTY**  
COUNTY  
**JUDITH BASIN**  
PROJECT ID  
**SF 57-1(14)24**  
UPN  
**10572-014-000**

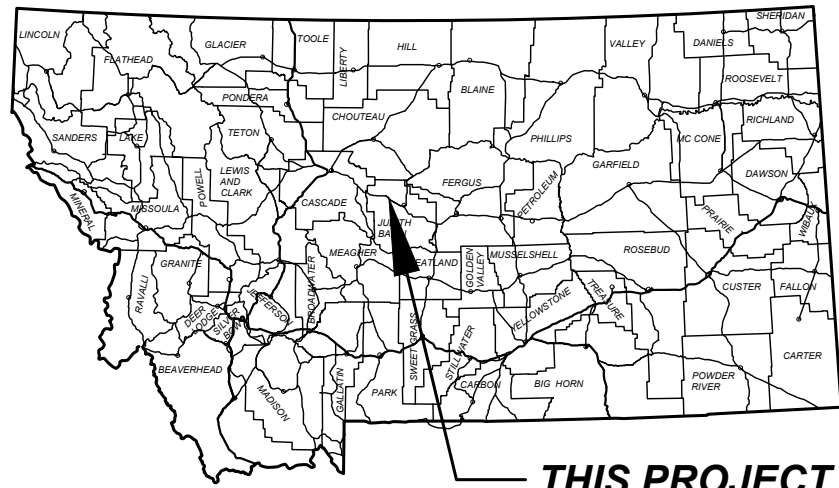
FHWA/MDT APPROVAL: 05/06/2026  
MAP REVISED:  
10572000R07TL001.DWG

**MONTANA**  
Department of Transportation  
**RIGHT OF WAY PLAN**  
5/19/2026 12:44 PM

# MONTANA DEPARTMENT OF TRANSPORTATION

## RIGHT OF WAY PLAN STATE AID PROJECT SF 57-1(14)24 MT 200 DRAINAGE-EVANS PROPERTY JUDITH BASIN COUNTY

LENGTH 0.7 MILES



THIS PROJECT

### PLAN LEGEND

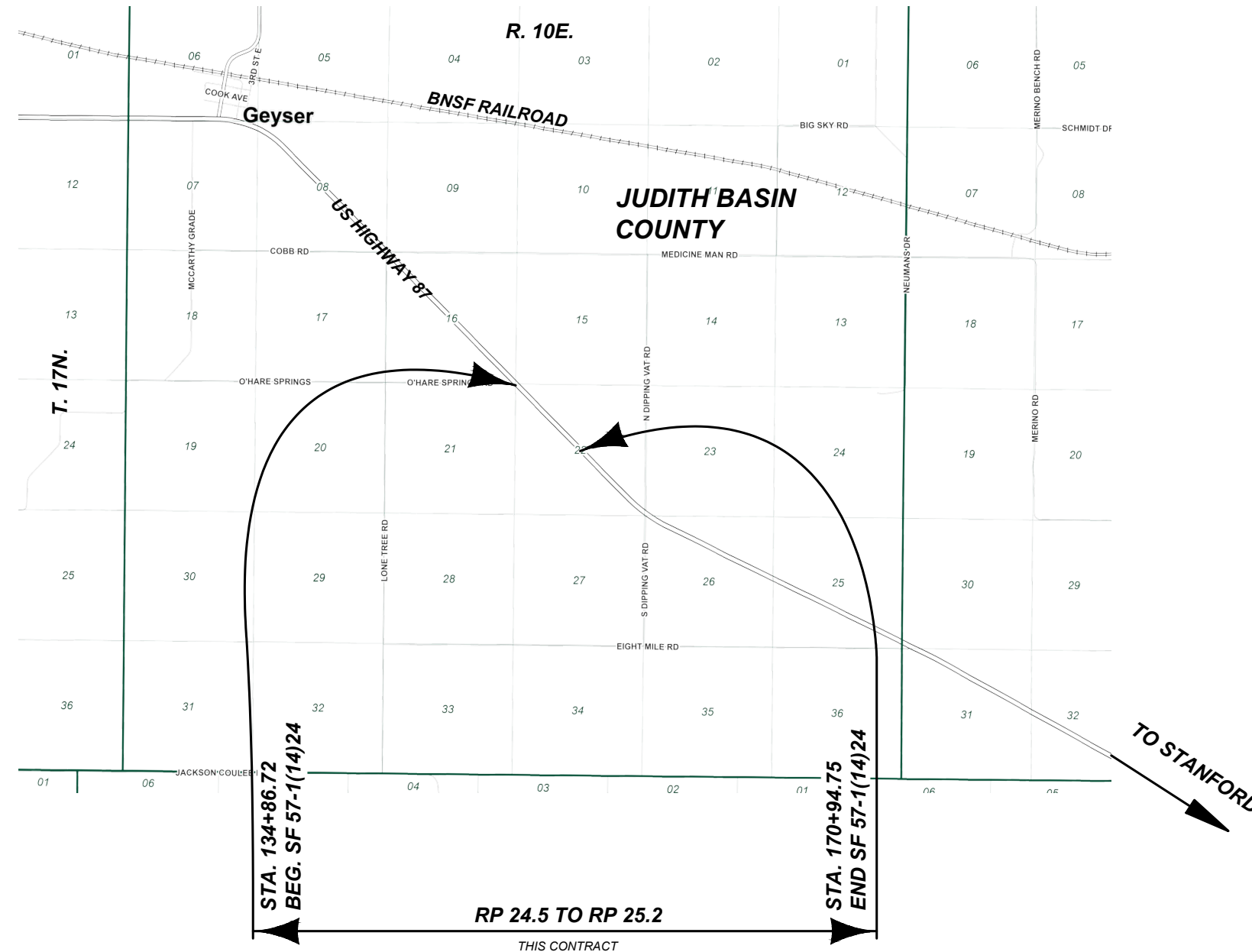
- PROPOSED RIGHT OF WAY LINE
- EXISTING RIGHT OF WAY LINE
- RAILROAD RIGHT OF WAY LINE
- RIGHT OF WAY BASELINE
- SECTION LINE
- OWNERSHIP BOUNDARY
- FULL ACCESS CONTROL
- LIMITED ACCESS CONTROL
- EXISTING FULL ACCESS CONTROL
- EXISTING LIMITED ACCESS CONTROL
- SECTION CORNER
- FOUND SECTION CORNER
- UNFOUND SECTION CORNER
- CLOSING CORNER
- MEANDER CORNER
- CENTER OF SECTION
- 1/8 SECTION CORNER FOUND
- RIGHT OF WAY MONUMENT
- PROPERTY CORNER PIN
- PARCEL NUMBERS
- RAILROADS
- EXISTING DITCH
- CONSTRUCTION LIMITS
- CUT SECTION
- TOE OF FILL

### ASSOCIATED PROJECT AGREEMENT NUMBERS

R/W	SF 57-1(14)24
I. C.	
P. E.	SF 57-1(14)24

### RELATED PROJECTS

FAP 235-H  
F 57-2(3)21



FOR EXISTING R/W RETRACEMENT, SEE C.O.S. 465



GRID STATE PLANE COORDINATES  
THIS IS A STATE PLANE COORDINATE PROJECT. ALL DIMENSIONS, DISTANCES AND AREAS ON THIS PROJECT ARE GRID. EXCEPT FOR THE EXISTING RW WIDTH DIMENSION, WHICH IS RECORD.  
THE COMBINATION SCALE FACTOR IS 0.9993997

PROJECT NAME  
MT 200 DRAINAGE-EVANS PROPERTY

COUNTY  
JUDITH BASIN

PROJECT ID  
SF 57-1(14)24

UPN  
10572-014-000

FHWA/MDT APPROVAL: 05/06/2026

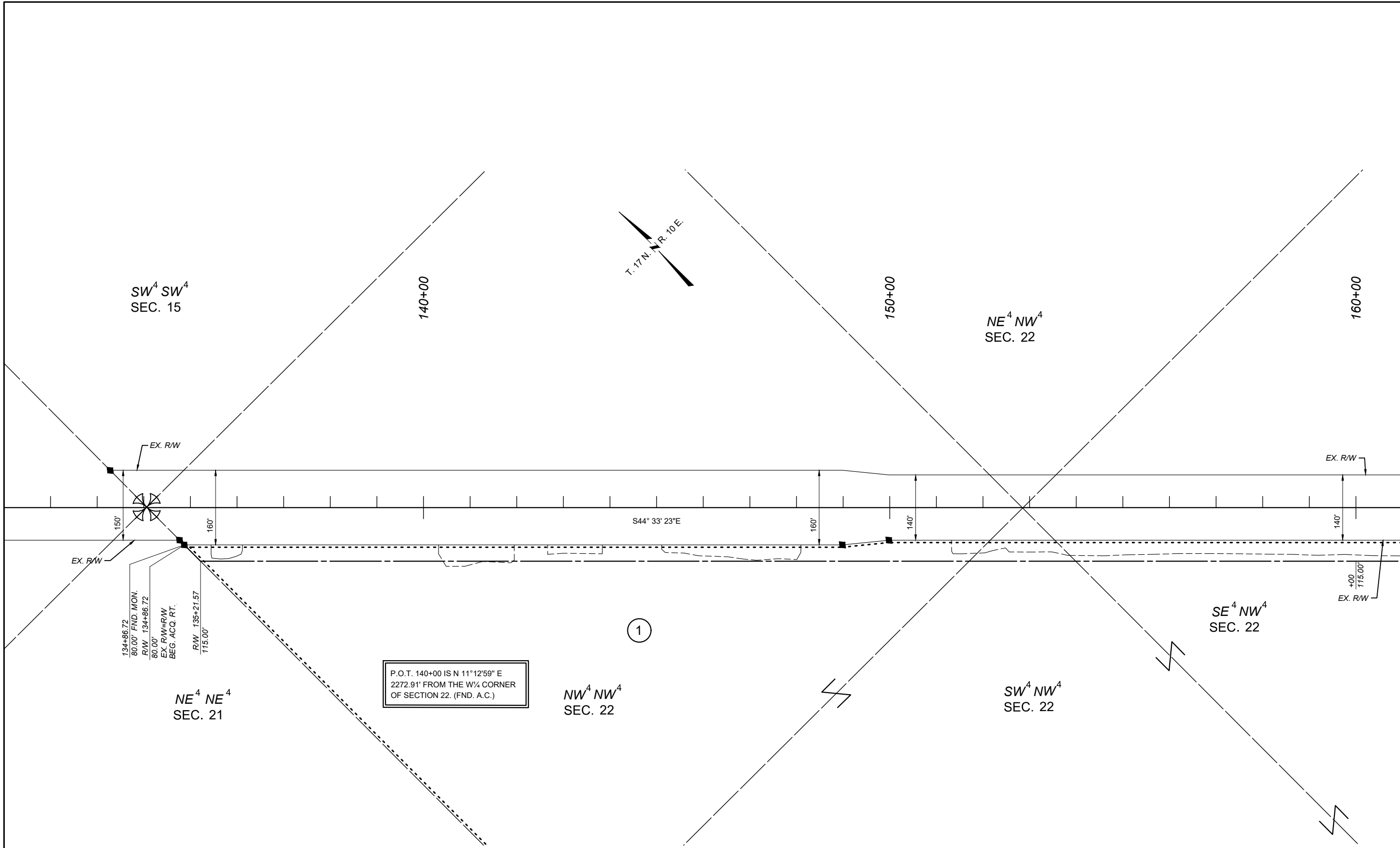
MAP REVISED:

10572000ROPLN001.DWG

MONTANA  
Department of Transportation

RIGHT OF WAY PLAN

5/19/2026 12:44 PM



FOR EXISTING R/W RETRACEMENT, SEE  
C.O.S. 465

- NOTES
1. THE PROPOSED R/W LINE WHERE A SPIRAL CURVE TRANSITION IS USED IS A CHORD RATHER THAN A CONCENTRIC CURVE.
  2. ALL STATIONS AND OFFSETS FOR R/W BREAKS ARE IN REFERENCE TO THE R/W BASELINE.



GRID STATE PLANE COORDINATES  
THIS IS A STATE PLANE COORDINATE PROJECT. ALL DIMENSIONS, DISTANCES AND AREAS ON THIS PROJECT ARE GRID. EXCEPT FOR THE EXISTING RW WIDTH DIMENSION, WHICH IS RECORD.  
THE COMBINATION SCALE FACTOR IS 0.9993997

PROJECT NAME  
MT 200 DRAINAGE-EVANS PROPERTY

COUNTY  
JUDITH BASIN

PROJECT ID  
SF 57-1(14)24

UPN  
10572-014-000

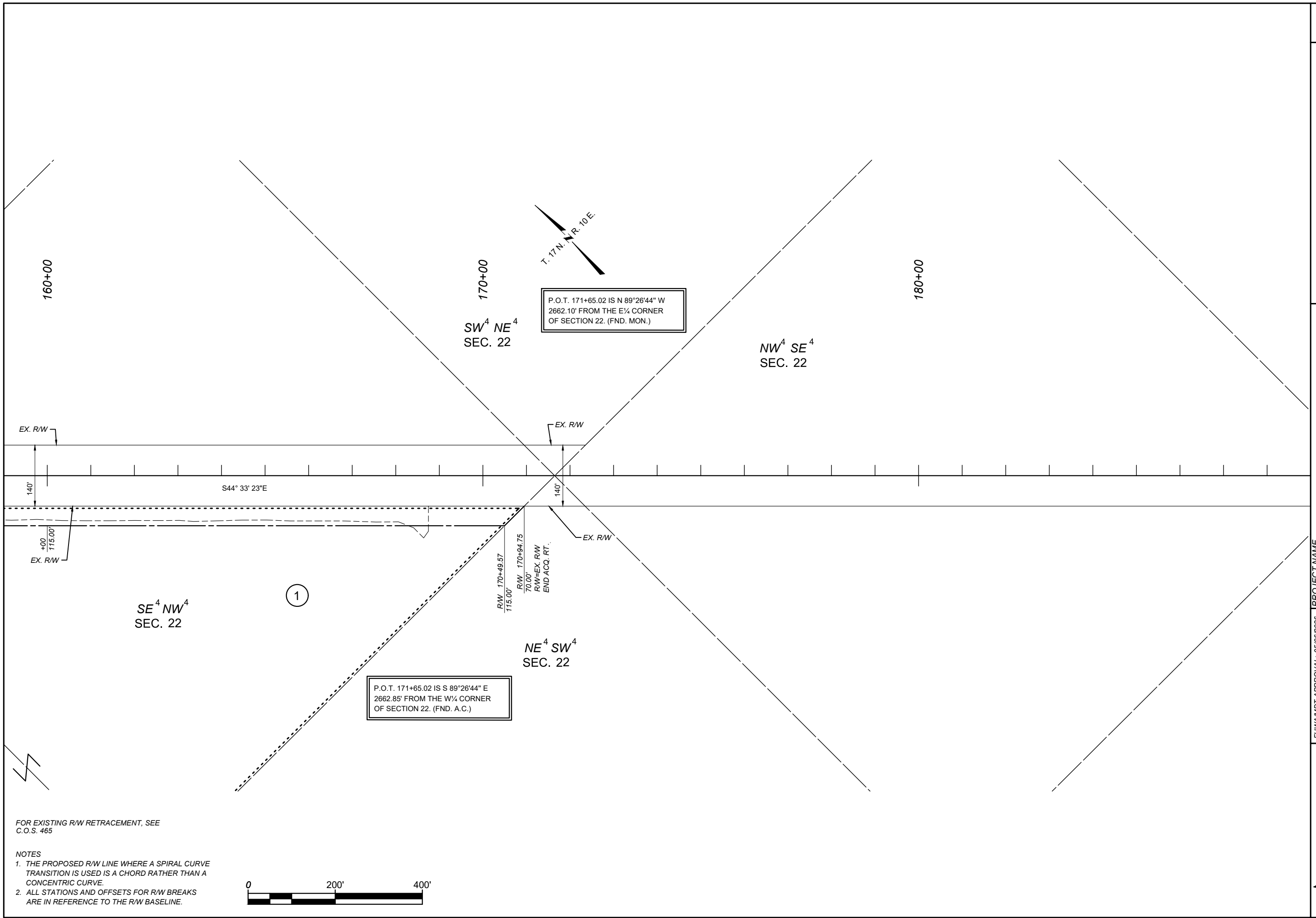
FHWA/MDT APPROVAL: 05/06/2026

MAP REVISED:

MONTANA  
Department of Transportation

RIGHT OF WAY PLAN

5/19/2026 12:44 PM



FOR EXISTING R/W RETRACEMENT, SEE  
C.O.S. 465

- NOTES
1. THE PROPOSED R/W LINE WHERE A SPIRAL CURVE TRANSITION IS USED IS A CHORD RATHER THAN A CONCENTRIC CURVE.
  2. ALL STATIONS AND OFFSETS FOR R/W BREAKS ARE IN REFERENCE TO THE R/W BASELINE.

