

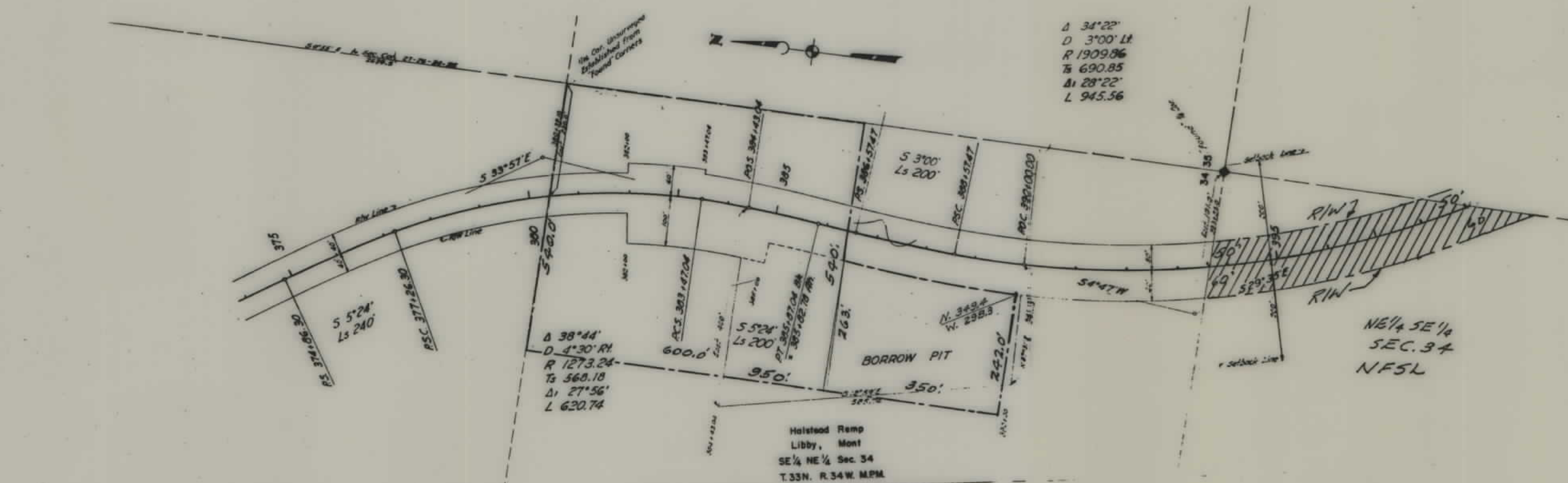
PLANS

NOT

TO

SCALE

| FED. ROAD DIST. NO. | STATE | FED. AID PROJ. NO. | SHEET NO. | TOTAL SHEETS |
|---------------------|-------|--------------------|-----------|--------------|
| 1 | MONT. | FHP 1C(2) | 1 | 1 |



STATE OF MONTANA
STATE HIGHWAY COMMISSION
PLAT SHOWING LAND
REQUIRED FOR RIGHT OF WAY
LINCOLN COUNTY

SCALE 1"= 200' MAP COMPLETED _____
 DESCRIPTIONS WRITTEN BY _____ DATE _____
 DESCRIPTIONS CHECKED BY _____ DATE _____
 APPROVED BY _____ PLANS DEPT. _____
 APPROVED BY _____ R/W ENGINEER _____