

PLANS  
NOT  
TO  
SCALE



PROJECTS: FHP 2A, FHP 2B, FHP 2D  
LINCOLN COUNTY, MONTANA

I HEREBY CERTIFY THAT THIS PLAN AS  
PREPARED BY THE MONTANA DEPARTMENT  
OF HIGHWAYS ACCURATELY REPRESENTS  
THE LOCATION AND RIGHT OF WAY WIDTHS  
OF THE PROJECTS OVER AND ACROSS  
NATIONAL FOREST LANDS

Robert E. Champion for  
ROBERT E. CHAMPION, P.E.  
CHIEF-RIGHT OF WAY BUREAU

APPROVED:

William H. Perry

FOREST ENGINEER

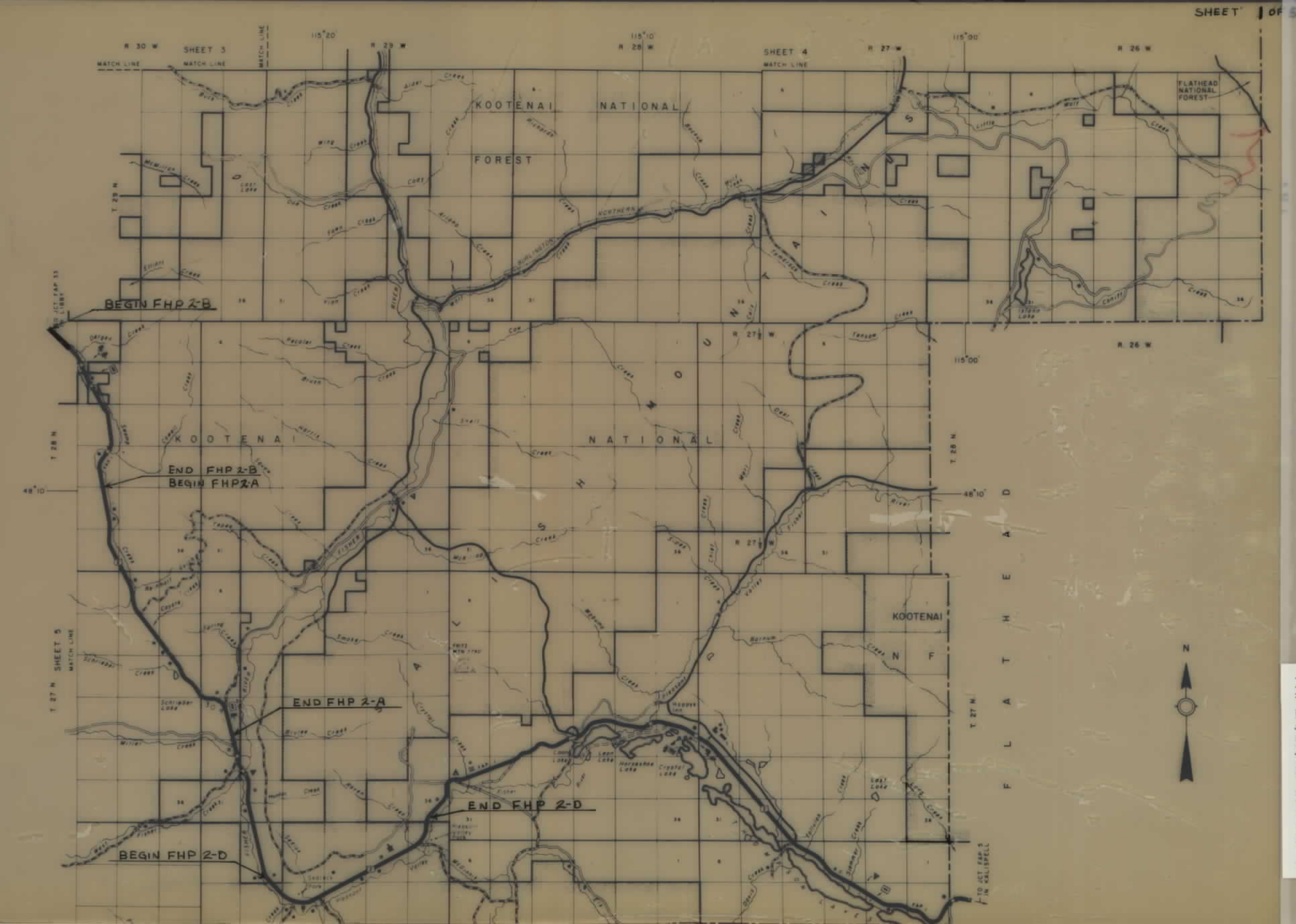
12-1-31  
DATE

9-1-32  
DATE

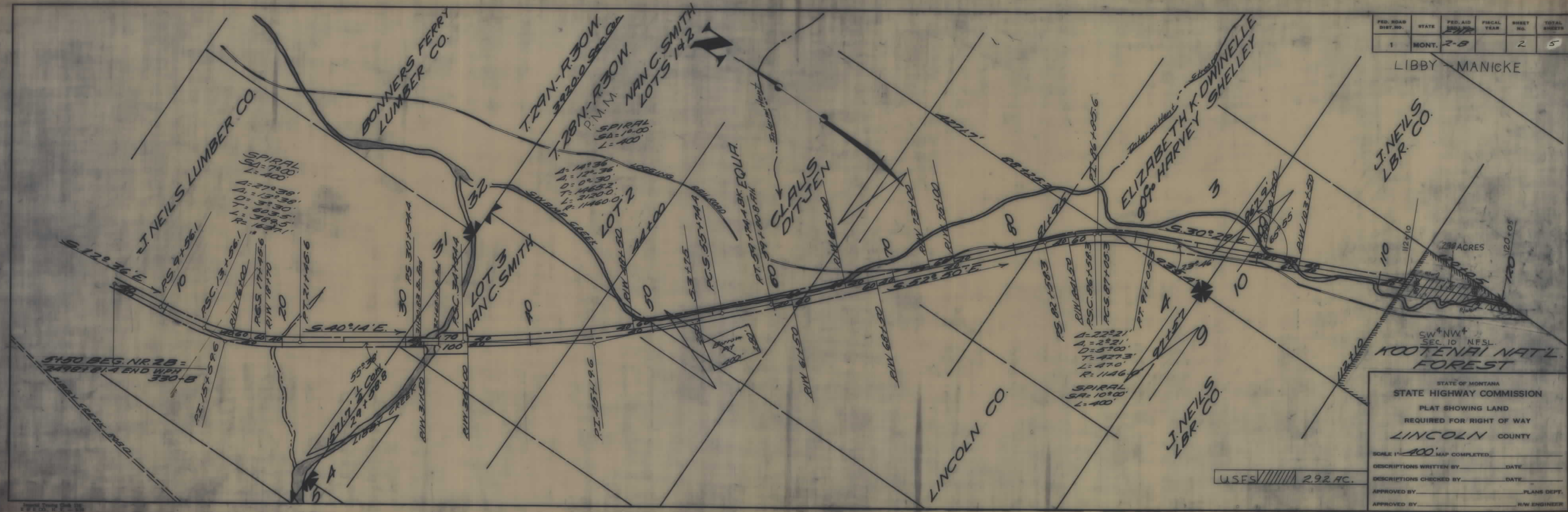
# GENERAL HIGHWAY MAP LINCOLN COUNTY MONTANA

PREPARED BY THE  
MONTANA DEPARTMENT OF HIGHWAYS  
PLANNING AND RESEARCH BUREAU  
IN COOPERATION WITH THE  
U.S. DEPARTMENT OF TRANSPORTATION  
FEDERAL HIGHWAY ADMINISTRATION

SCALE  
0 1 2 3 MILES  
BASE MAP COMPILED 1958







FED. ROAD DIST. NO.	STATE	FED. AID DIST. NO.	FISCAL YEAR	SHEET NO.	TOTAL SHEETS
1	MONT.	2-8		2	5

LIBBY - MANICKE

SW<sup>4</sup>NW<sup>4</sup>  
SEC. 10 N.F.S.L.  
KOOTENAI NAT'L FOREST

STATE OF MONTANA  
STATE HIGHWAY COMMISSION  
PLAT SHOWING LAND  
REQUIRED FOR RIGHT OF WAY  
LINCOLN COUNTY

SCALE 1" = 400' MAP COMPLETED \_\_\_\_\_  
DESCRIPTIONS WRITTEN BY \_\_\_\_\_ DATE \_\_\_\_\_  
DESCRIPTIONS CHECKED BY \_\_\_\_\_ DATE \_\_\_\_\_  
APPROVED BY \_\_\_\_\_ PLANS DEPT. \_\_\_\_\_  
APPROVED BY \_\_\_\_\_ R/W ENGINEER \_\_\_\_\_

USFS 292 AC.

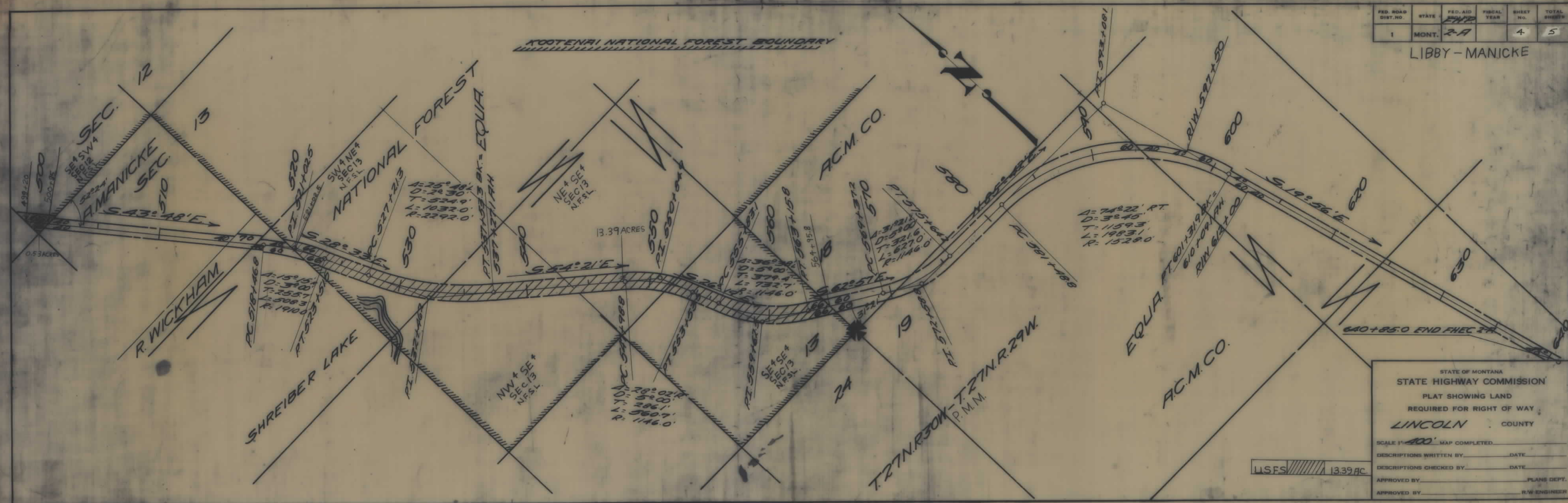






FED. ROAD DIST. NO.	STATE	FED. AID	FISCAL YEAR	SHEET NO.	TOTAL SHEETS
1	MONT.	2-A		4	5

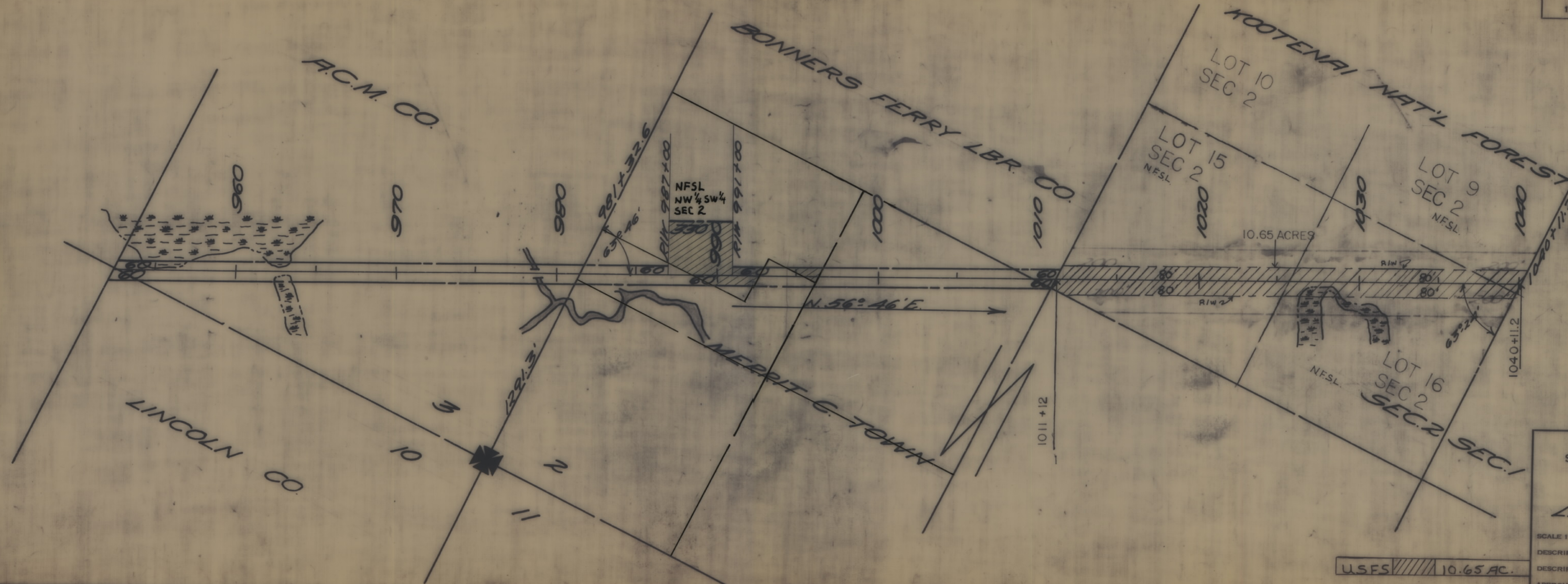
LIBBY - MANICKE





FED. ROAD DIST. NO.	STATE	FED. AID PROJ. NO.	FISCAL YEAR	SHEET NO.	TOTAL SHEETS
1	MONT.	FHP 2-D		5	5

LIBBY-MANICKE



STATE OF MONTANA  
STATE HIGHWAY COMMISSION  
PLAT SHOWING LAND  
REQUIRED FOR RIGHT OF WAY  
LINCOLN COUNTY

SCALE 1" = 400' MAP COMPLETED \_\_\_\_\_  
 DESCRIPTIONS WRITTEN BY \_\_\_\_\_ DATE \_\_\_\_\_  
 DESCRIPTIONS CHECKED BY \_\_\_\_\_ DATE \_\_\_\_\_  
 APPROVED BY \_\_\_\_\_ PLANS DEPT.  
 APPROVED BY \_\_\_\_\_ R/W ENGINEER

USFS 10.65 AC.