

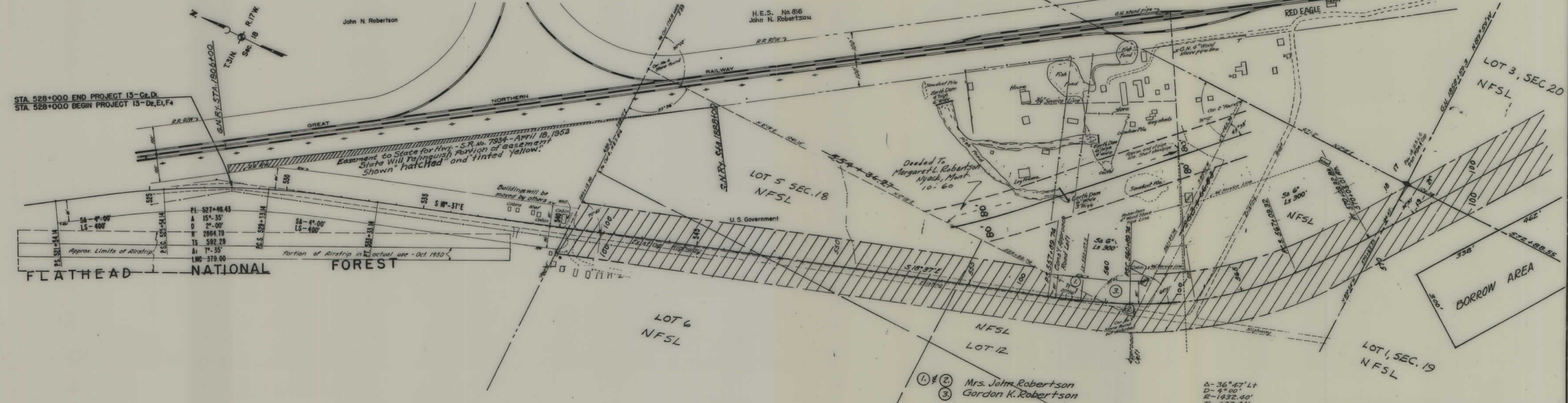
PLANS

NOT

TO

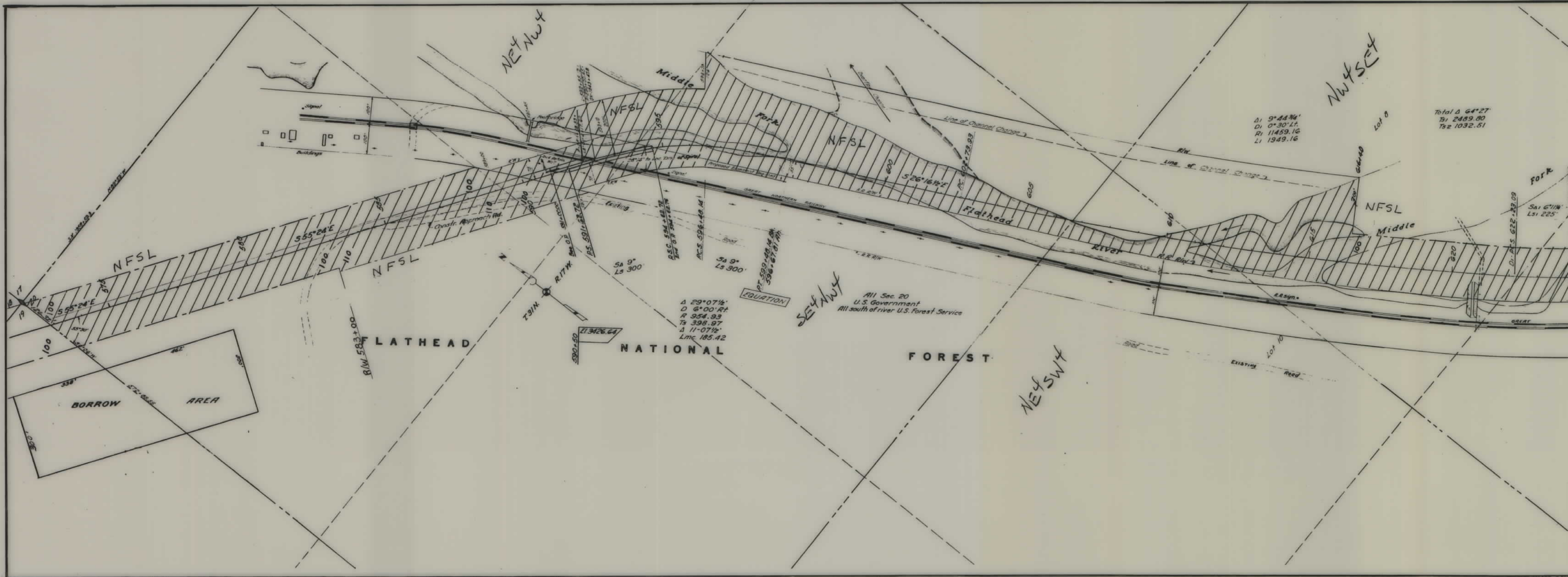
SCALE

FED. ROAD DIST. NO.	STATE	FED. AID PROJ. NO.	R/W NO.	SHEET No.	TOTAL SHEETS
8	MONT.	F.H.P. 13-D ₂ E ₁ F ₄	9013-02	1	6



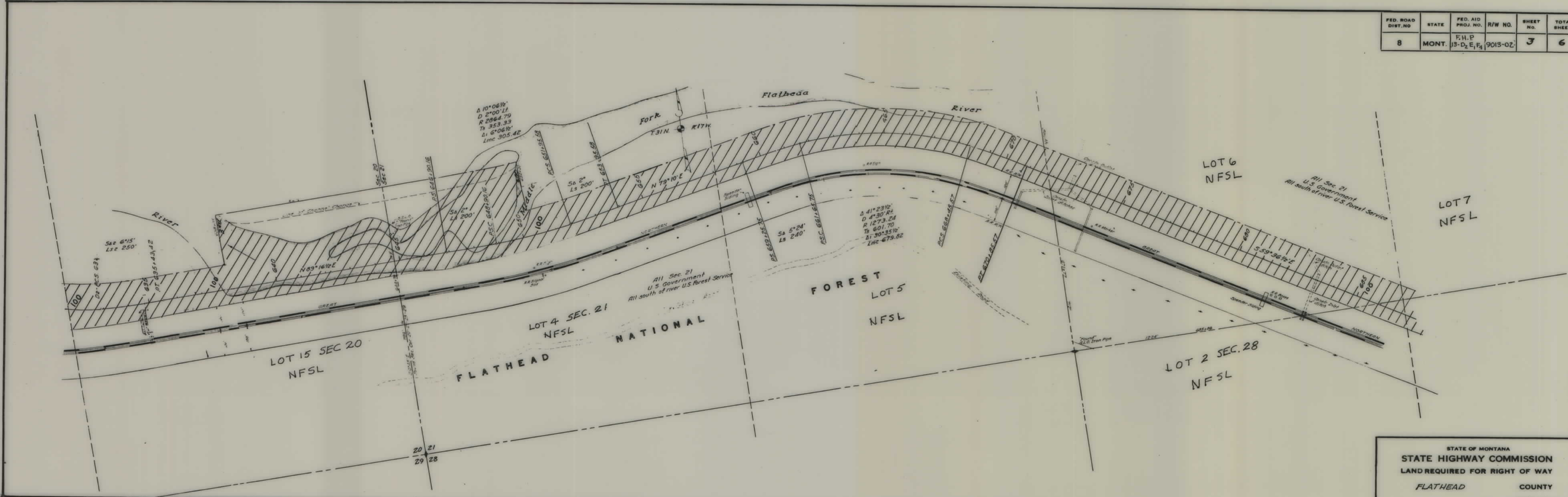
STATE OF MONTANA
 STATE HIGHWAY COMMISSION
 LAND REQUIRED FOR RIGHT OF WAY
 FLATHEAD COUNTY
 SCALE 1"=200' MAP COMPLETED 6/20/55

FED. ROAD DIS. NO.	STATE	FED. AID PROJ. NO.	R/W NO.	SHEET NO.	TOTAL SHEETS
	MONT.	F.H.P. 13-D ₂ E, F ₄	9013-02	2	6



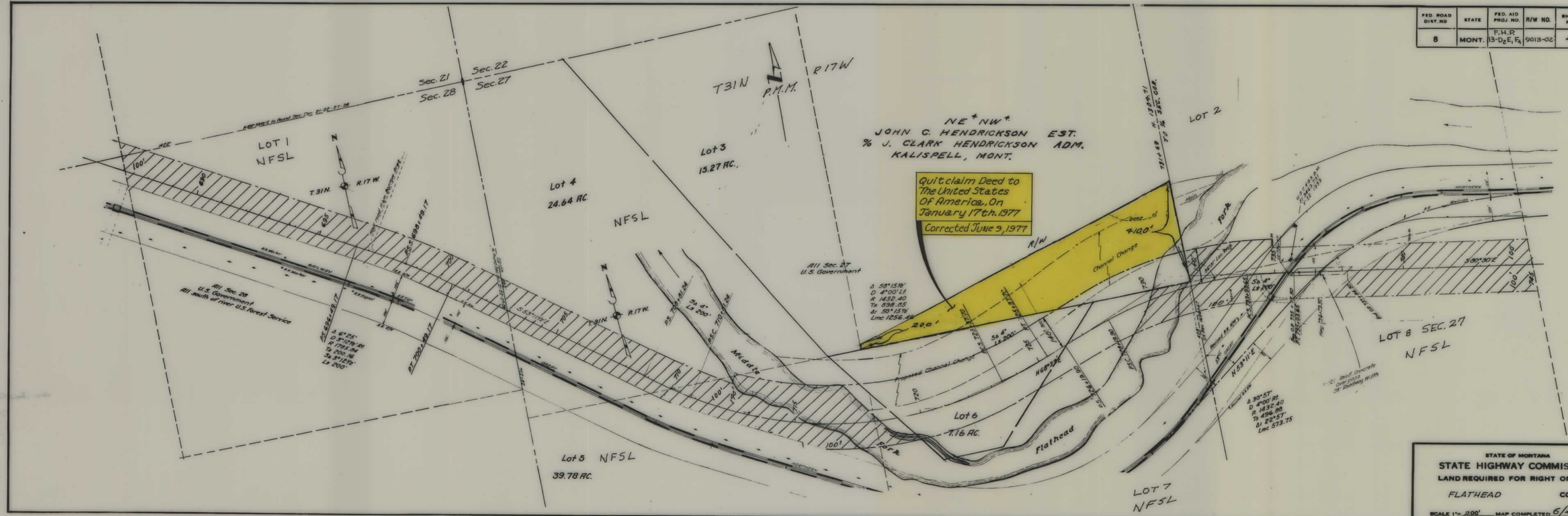
STATE OF MONTANA
STATE HIGHWAY COMMISSION
 REQUIRED FOR RIGHT OF WAY
 FLATHEAD COUNTY
 SCALE 1"=200' MAP COMPLETED 6/20/55

FED. ROAD DIST. NO.	STATE	FED. AID PROJ. NO.	R/W NO.	SHEET NO.	TOTAL SHEETS
8	MONT.	F.H.P. 13-D ₂ E ₁ F ₄	9013-02	3	6



STATE OF MONTANA
 STATE HIGHWAY COMMISSION
 LAND REQUIRED FOR RIGHT OF WAY
 FLATHEAD COUNTY
 SCALE 1" = 200' MAP COMPLETED 6/20/53

FED. ROAD DIST. NO.	STATE	FED. AID PROJ. NO.	R/W NO.	SHEET NO.	TOTAL SHEETS
8	MONT.	F.H.P. 13-D2E, F4	9013-02	4	6



NE¹NW¹
 JOHN C. HENDRICKSON EST.
 % J. CLARK HENDRICKSON ADM.
 KALISPELL, MONT.

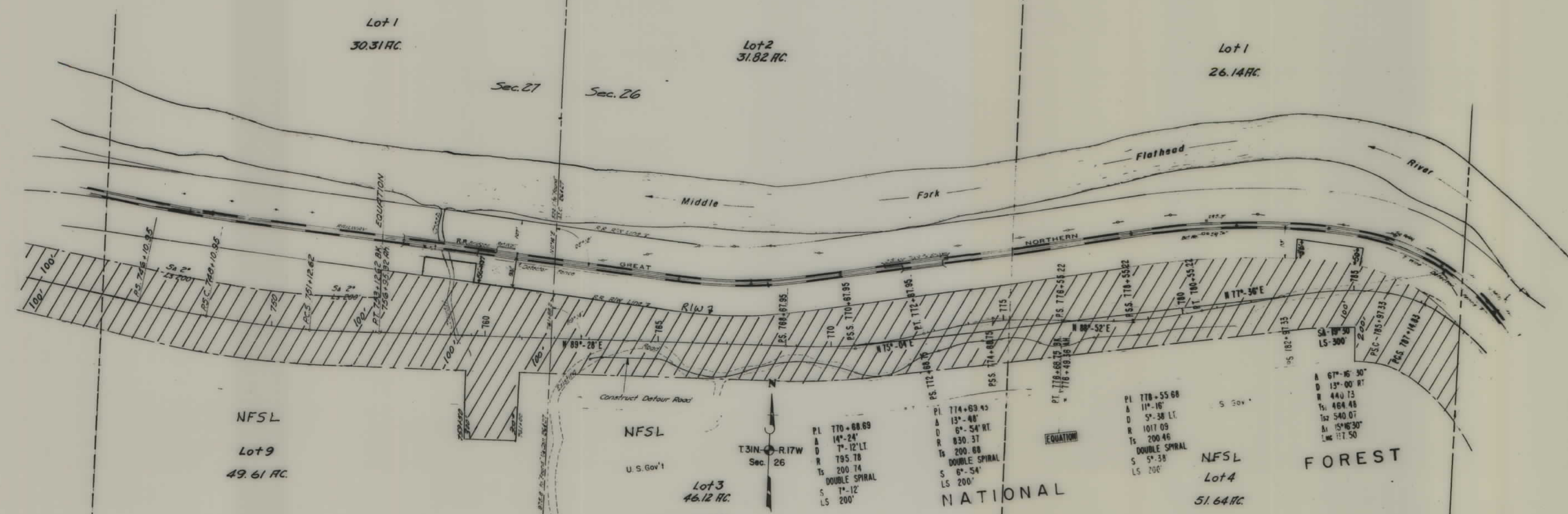
Quit claim Deed to
 The United States
 Of America, On
 January 17th. 1977
 Corrected June 9, 1977

Δ 50°15'14"
 D 4'00" LI
 R 1432.40
 Ts 498.85
 Δ 50°15'14"
 Lmc 1256.46

Δ 30°57'
 D 4'00" RI
 R 1432.40
 Ts 496.89
 Δ 22°57'
 Lmc 573.75

STATE OF MONTANA
 STATE HIGHWAY COMMISSION
 LAND REQUIRED FOR RIGHT OF WAY
 FLATHEAD COUNTY
 SCALE 1" = 200' MAP COMPLETED 6/20/55

FED. ROAD DIST. NO.	STATE	FED. AID PROJ. NO.	R/W NO.	SHEET NO.	TOTAL SHEETS
8	MONT.	F.H.P. 13-D ₂ E ₁ F ₄	5013-02	5	6



P.I. 770+00.69
 A 14'-24"
 D 7'-12' LT
 R 795.78
 TS 200.74
 DOUBLE SPIRAL
 S 6'-54"
 LS 200'

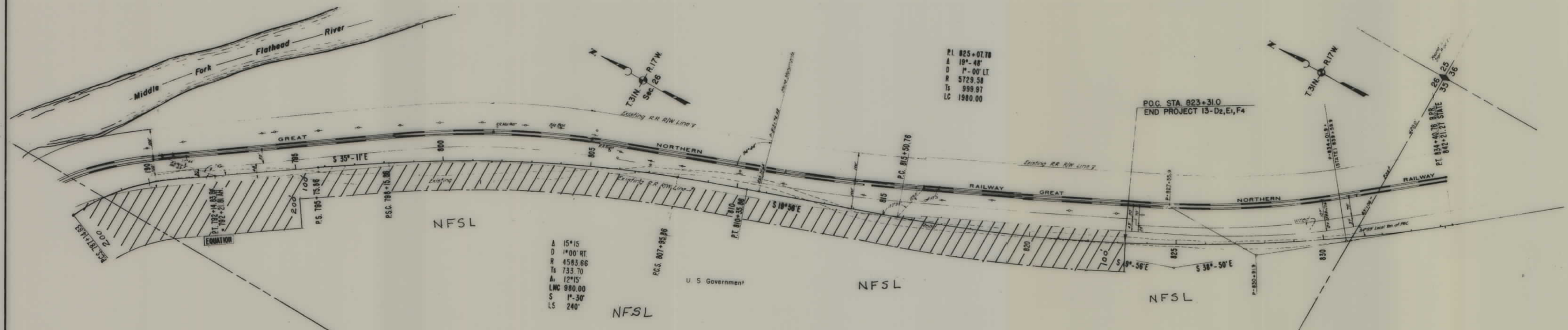
P.I. 774+09.45
 A 13'-40"
 D 6'-54' RT
 R 830.37
 TS 200.68
 DOUBLE SPIRAL
 S 6'-54"
 LS 200'

P.I. 778+55.68
 A 11'-16"
 D 5'-38' LT
 R 1017.09
 TS 200.46
 DOUBLE SPIRAL
 S 5'-38"
 LS 200'

A 67'-6" 30"
 D 13'-00" RT
 R 440.73
 TS 464.48
 TS 540.07
 A 15'-46" 30"
 LS 117.50

STATE OF MONTANA
 STATE HIGHWAY COMMISSION
 LAND REQUIRED FOR RIGHT OF WAY
 FLATHEAD COUNTY
 SCALE 1"=200' MAP COMPLETED 6/20/50

FED. ROAD DIST. NO.	STATE	FED. AID PROJ. NO.	R/W NO.	SHEET NO.	TOTAL SHEETS
8	MONT.	F.H.P. 113-D ₂ E, F ₄	9013-02	6	6



P.I. 825+07.78
 Δ 19°-48'
 D 1°-00' LT
 R 5729.58
 Ts 999.97
 LC 1980.00

Δ 15°15'
 D 1°00' RT
 R 4593.66
 Ts 733.70
 Δ 12°15'
 LMC 980.00
 S 1°-30'
 LS 240'

STATE OF MONTANA
 STATE HIGHWAY COMMISSION
 LAND REQUIRED FOR RIGHT OF WAY
 FLATHEAD COUNTY
 SCALE 1" = 200' MAP COMPLETED 6/20/55