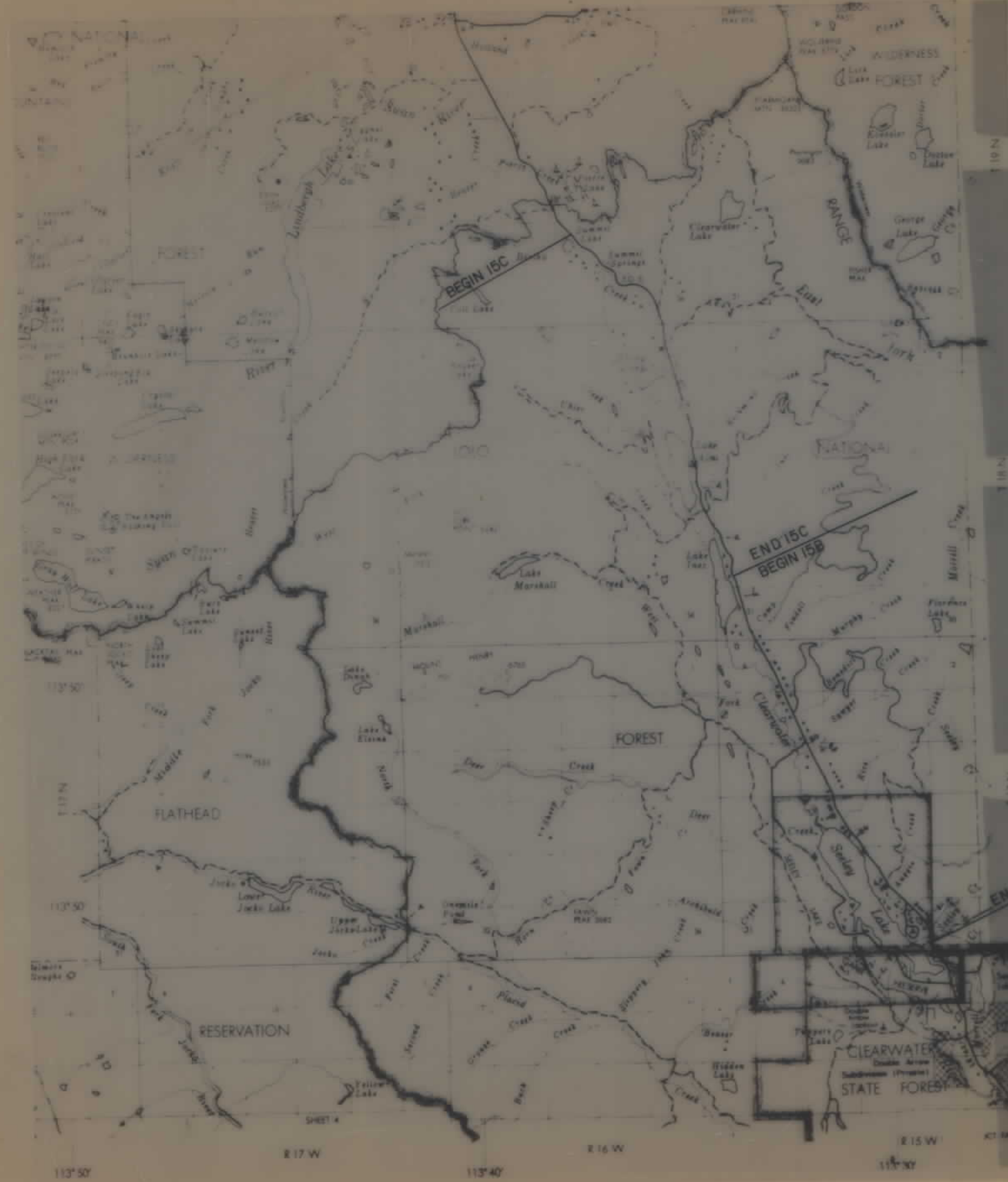


PLANS

NOT

TO

SCALE



PROJECTS FHP 15C, FHP 15B
SWAN RIVER HIGHWAY

RIGHT OF WAY PLANS AFFECTING NATIONAL FOREST SYSTEM
LANDS IN THE LOLO NATIONAL FOREST IN MISSOULA COUNTY,
MONTANA

APPROVED FOR RIGHT OF WAY PURPOSES:

FEDERAL HIGHWAY ADMINISTRATION
Merlin J. Voegelé
Merlin J. Voegelé, Division R/W Officer

OCTOBER 31 1986
Date

MONTANA DEPARTMENT OF HIGHWAYS
Jack R. Ricker
Jack R. Ricker, Chief-R/W Bureau

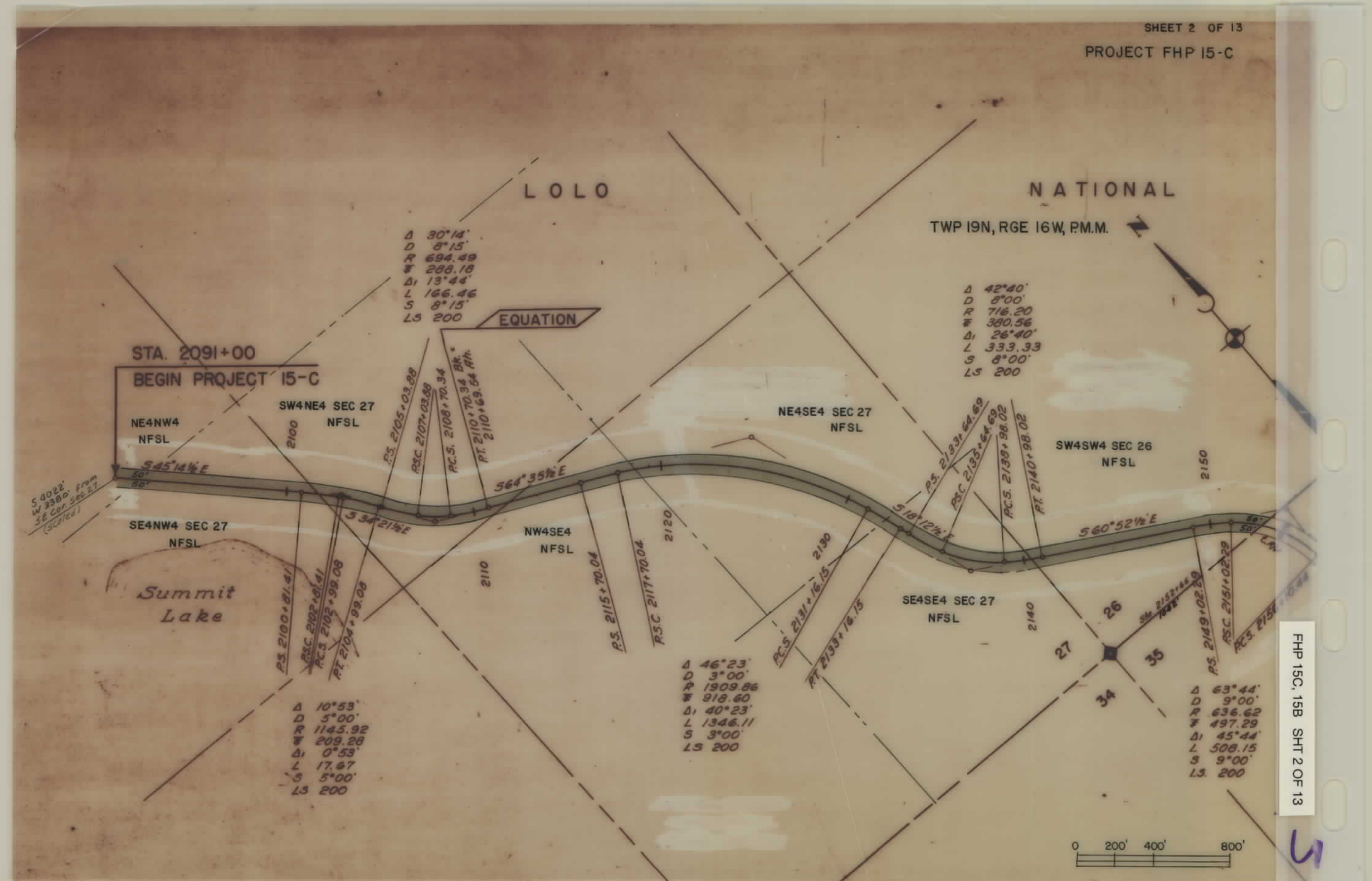
9/29/86
Date

W. L. Kaufman
Forest Engineer

10-3-86
Date

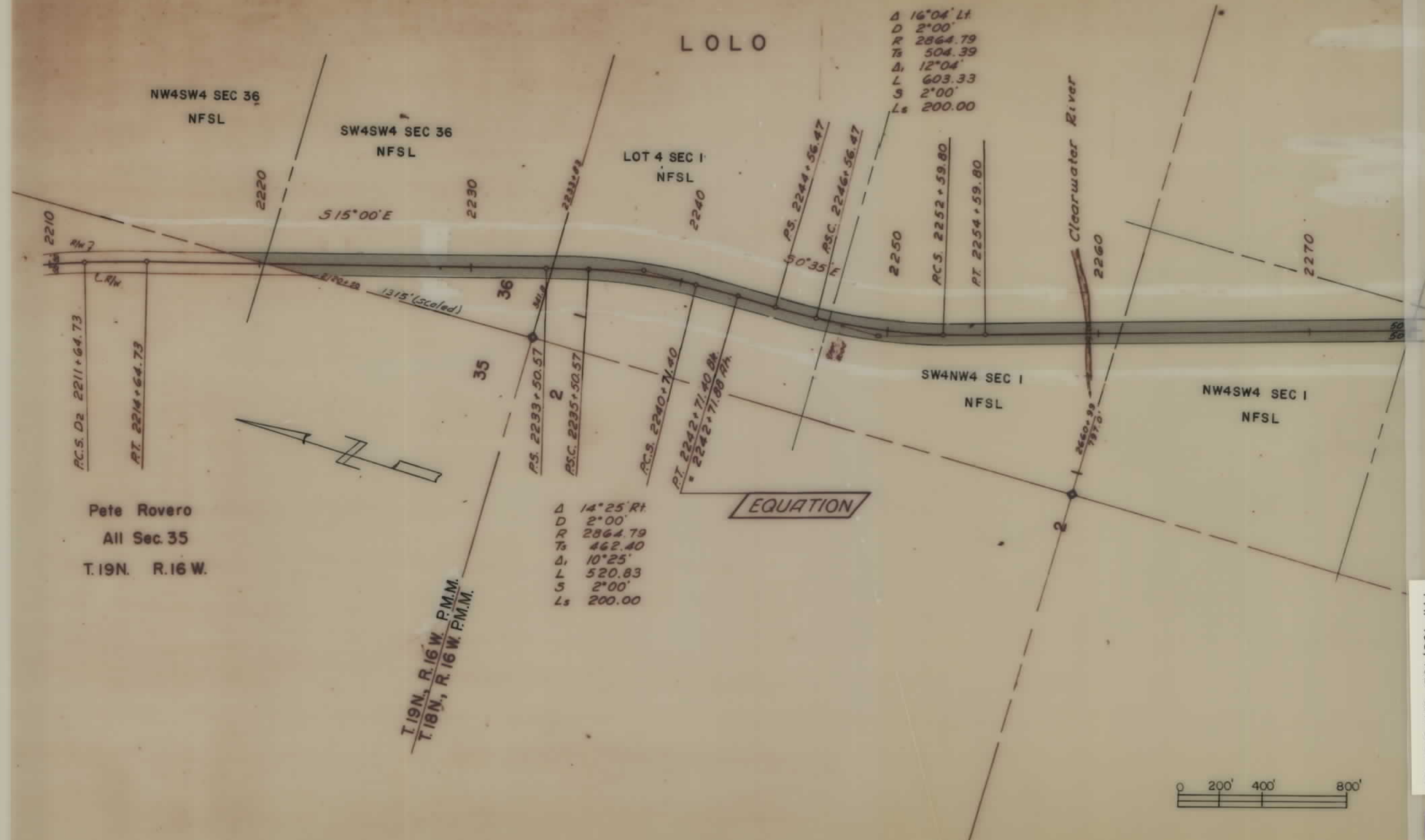
FHP 15C, 15B SHT 1 OF 13

5



FHP 15C, 15B SH1 2 OF 13

5

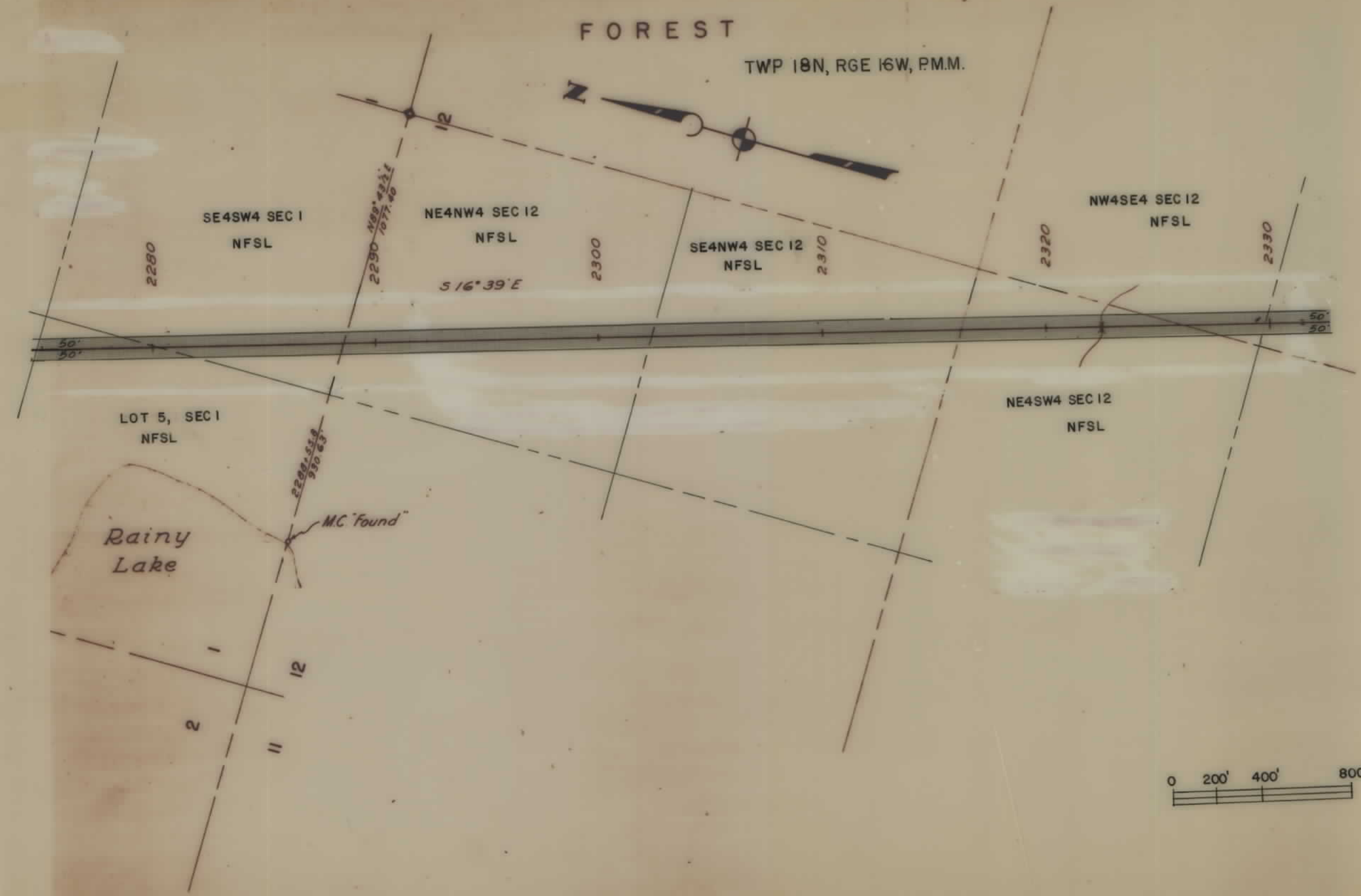


FHP 15C, 15B SHT 3 OF 13

5

LOLO NATIONAL
FOREST

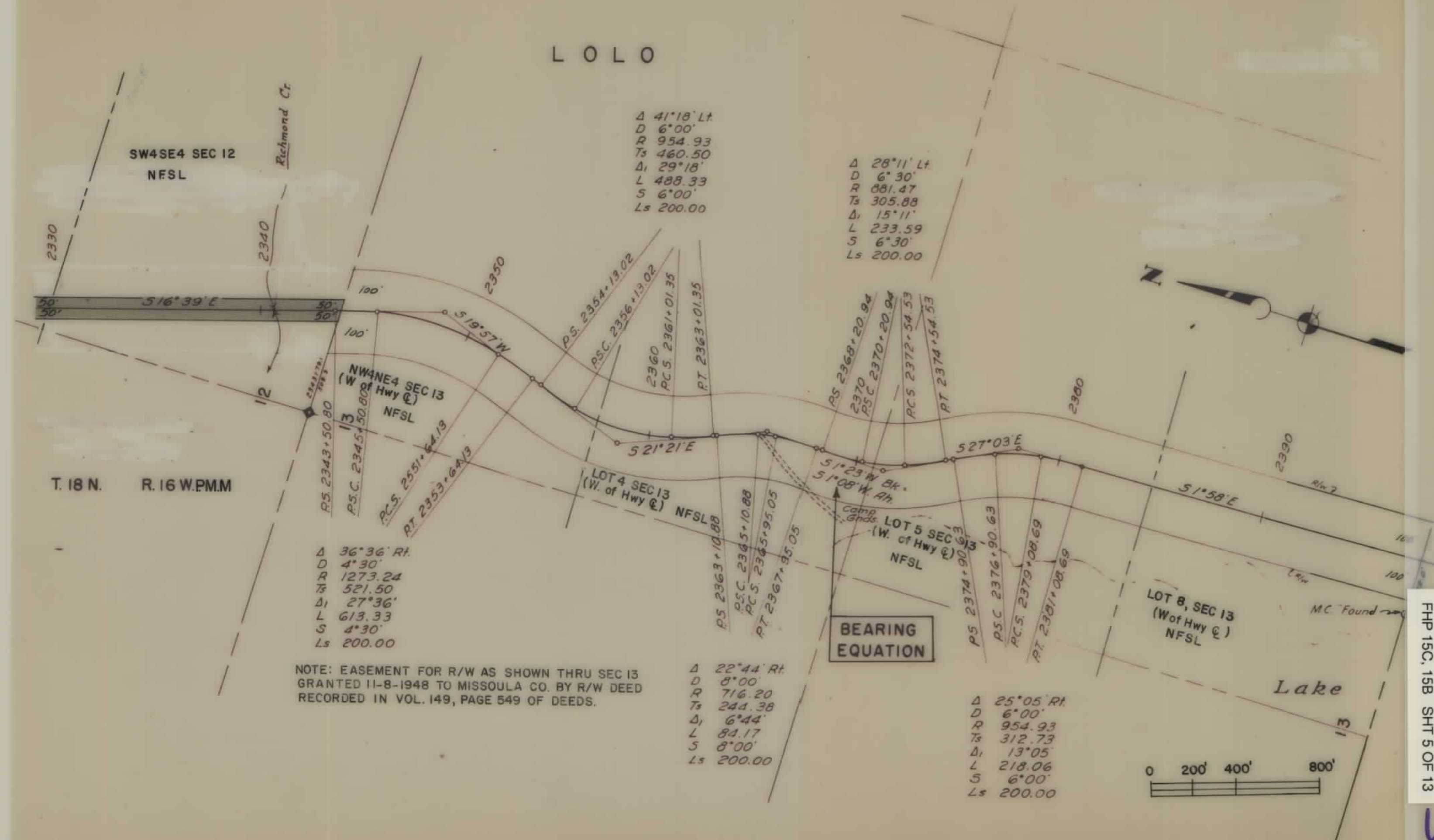
TWP 18N, RGE 16W, P.M.M.



FHP 15C, 15B SHT 4 OF 13

5

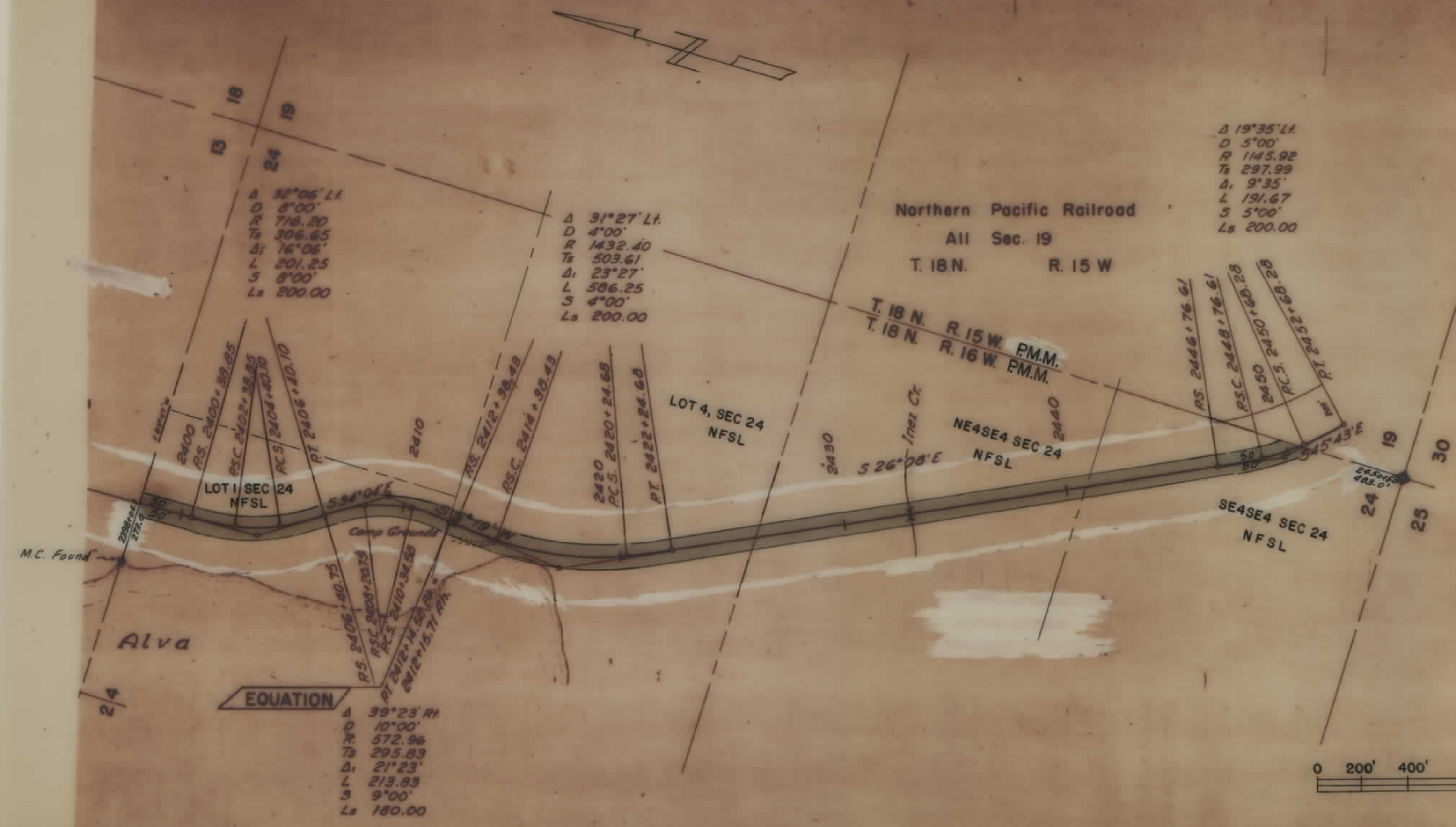
LOLO



FHP 15C, 15B SHT 5 OF 13

5

FOREST



Δ 32°06' Lt
D 8'00"
R 716.20
Ts 306.65
Δ₁ 16°06'
L 201.25
S 8'00"
Ls 200.00

Δ 31°27' Lt
D 4'00"
R 1432.40
Ts 503.61
Δ₁ 23°27'
L 586.25
S 4'00"
Ls 200.00

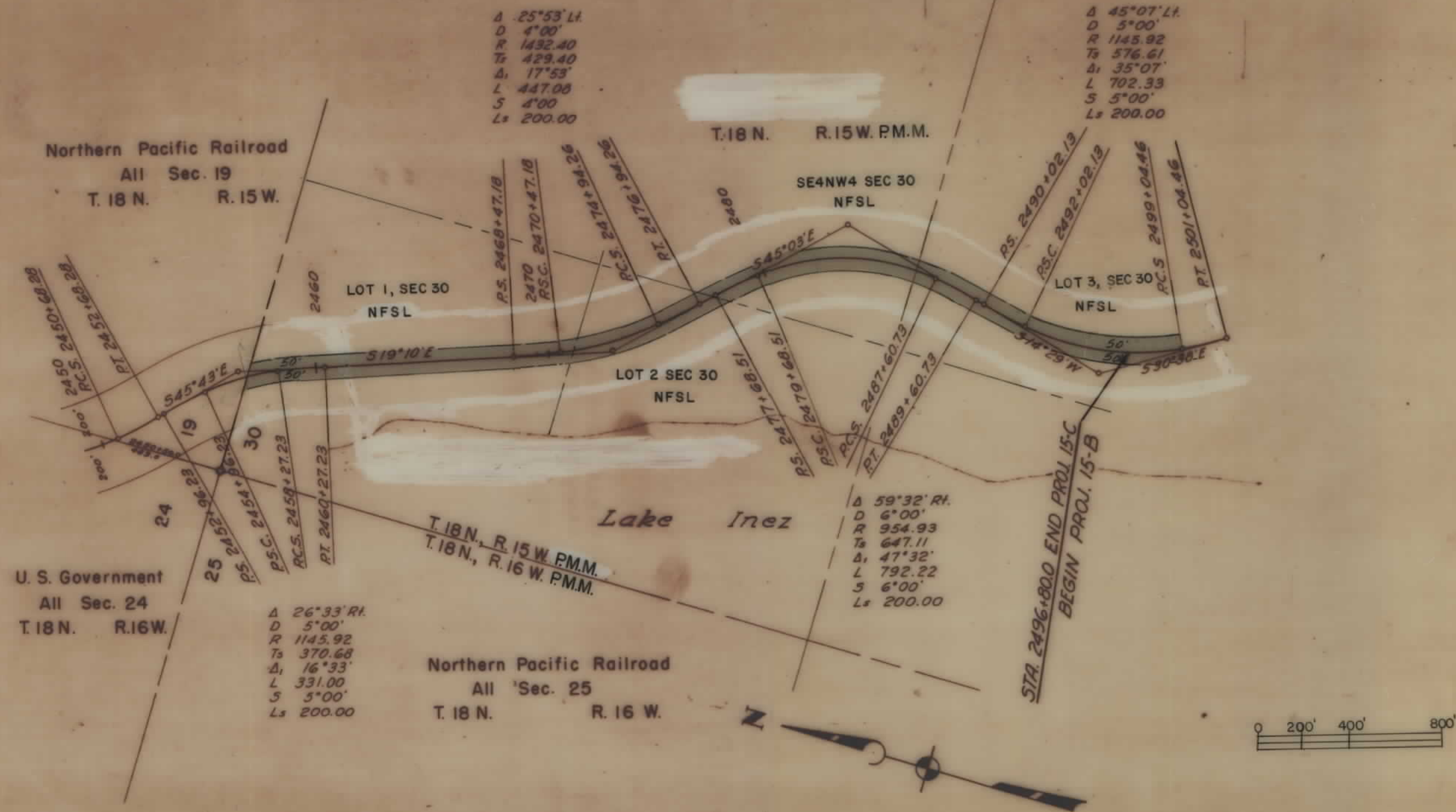
Δ 19°35' Lt
D 5'00"
R 1145.92
Ts 297.99
Δ₁ 9'35"
L 191.67
S 5'00"
Ls 200.00

EQUATION
Δ 39°23' Rt
D 10'00"
R 572.96
Ts 295.83
Δ₁ 21°23'
L 213.83
S 9'00"
Ls 180.00

FHP 15C, 15B SHT 6 OF 13

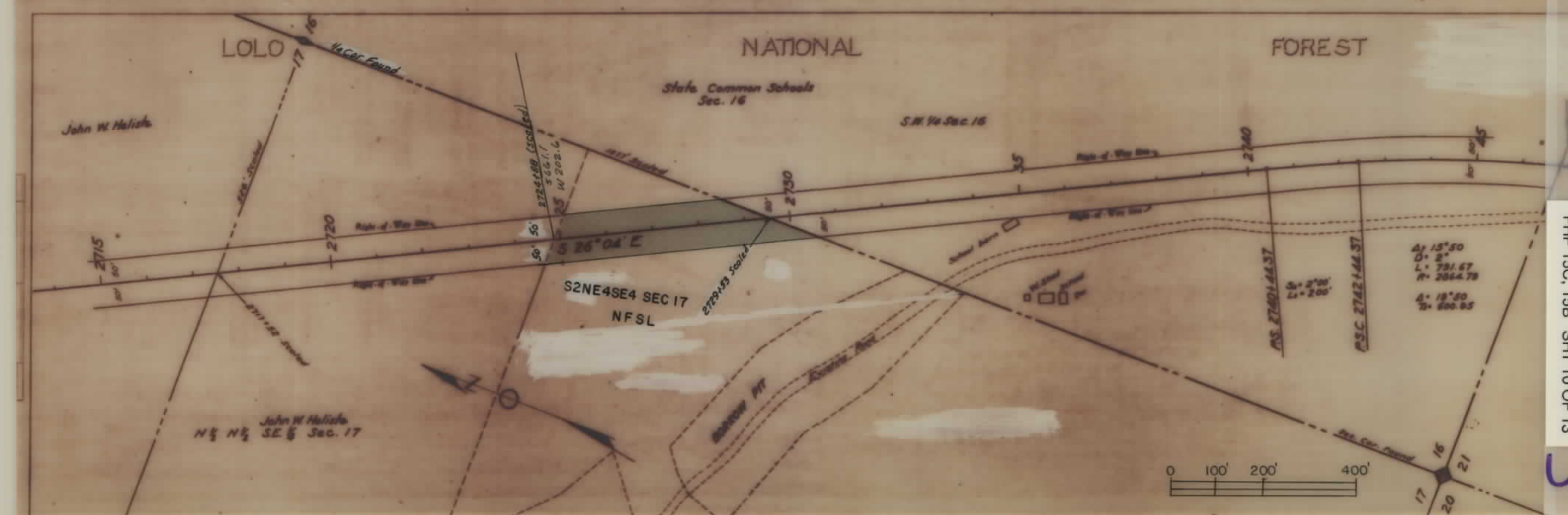
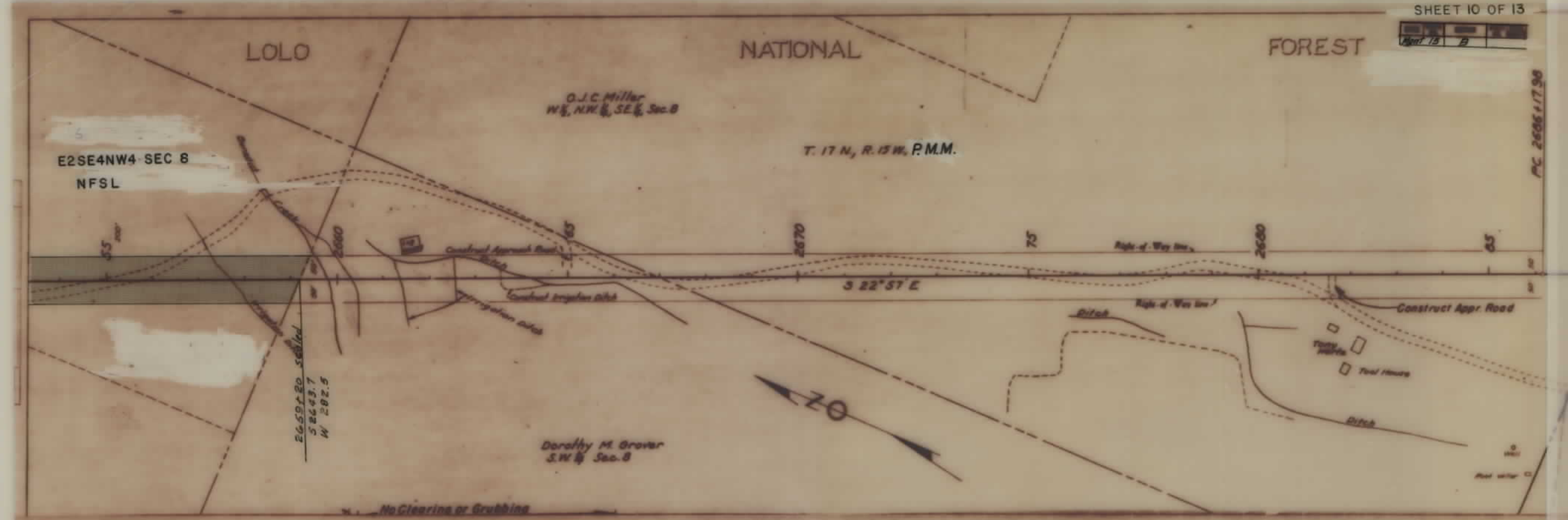
0 200' 400'

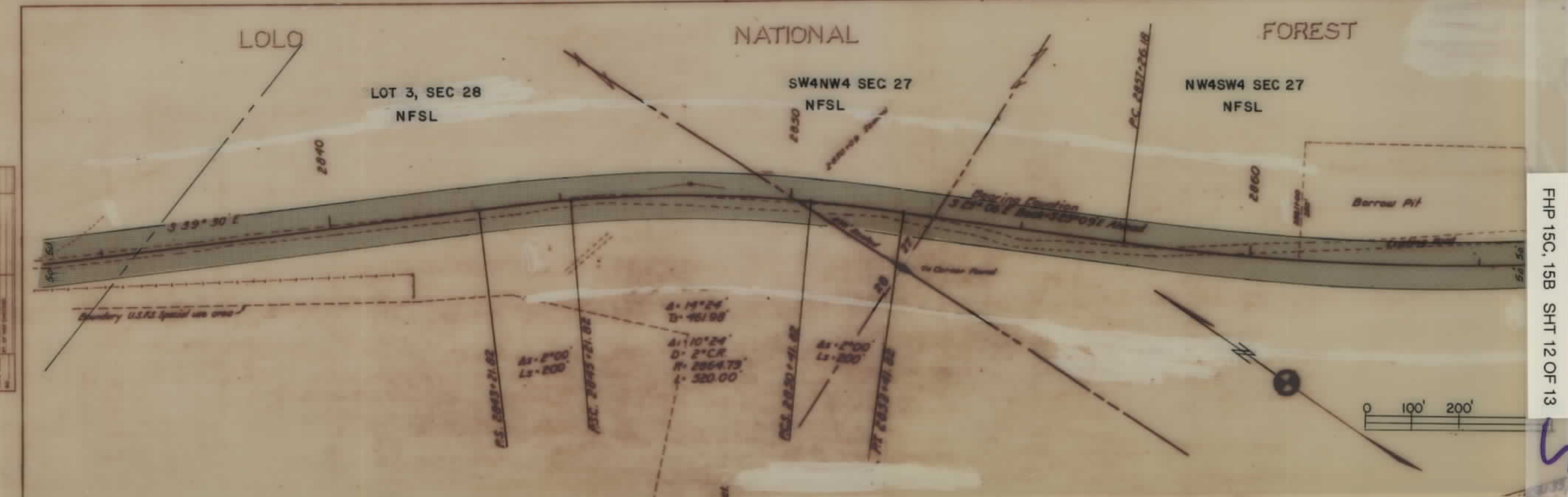
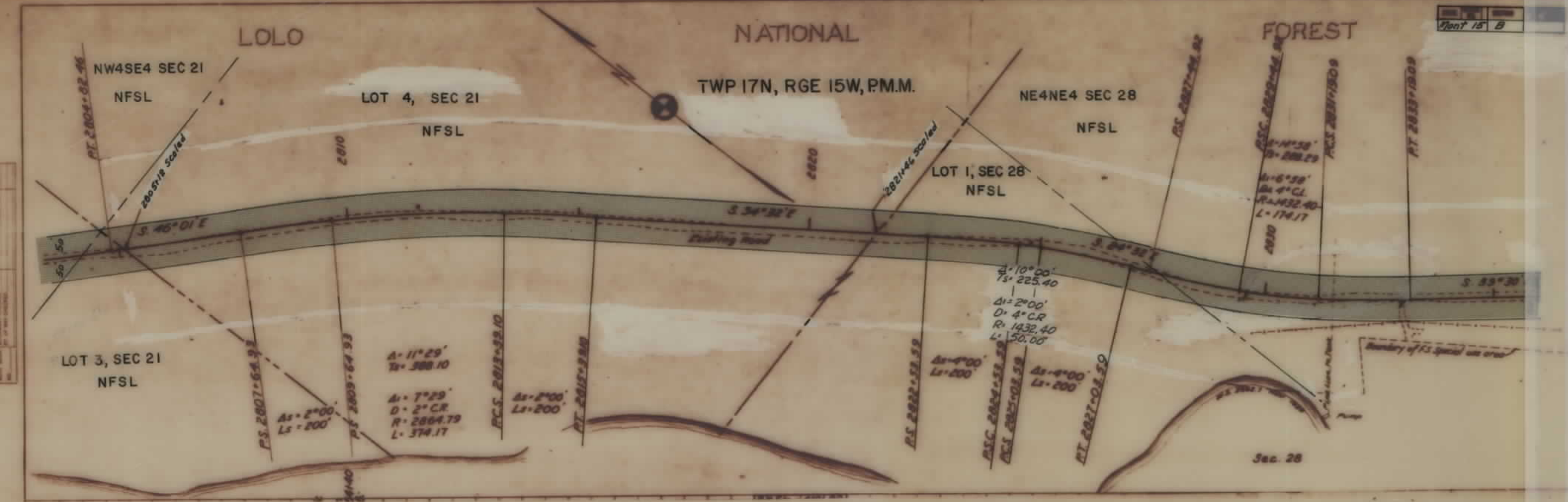
LOLO NATIONAL FOREST



FHP 15C, 15B SHT 7 OF 13

5





Scale	1" = 40'
North	15° E

