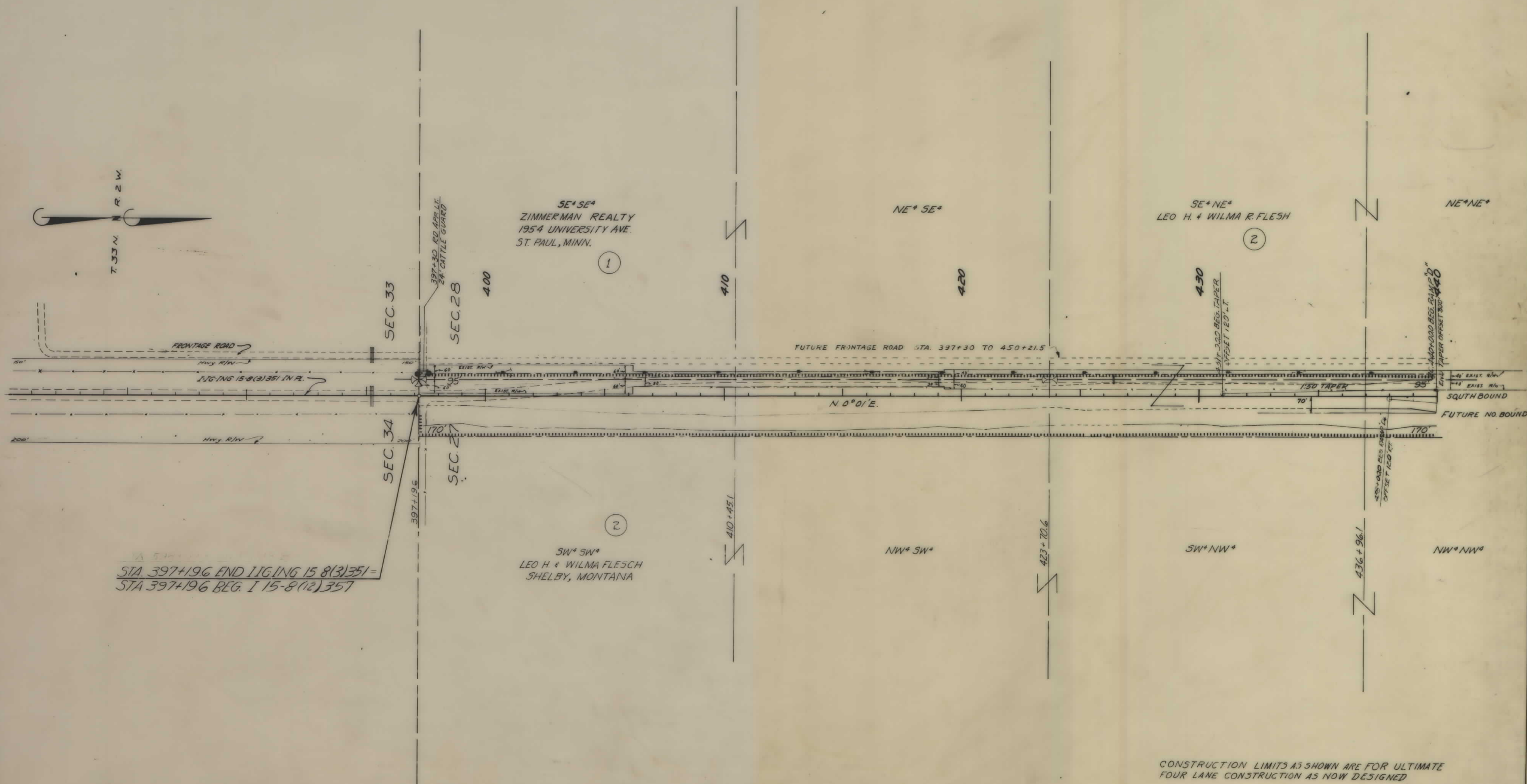


PLANS  
NOT  
TO  
SCALE

FED. ROAD DIST. NO.	STATE	FED. AID PROJECT NUMBERS		STATE NO.	SHEET NO.	TOTAL SHEETS
		CONST. NO.	R/W NO.			
8	MONT.	1-15-8(12)357		8158-12	1	11

SHELBY — NORTH

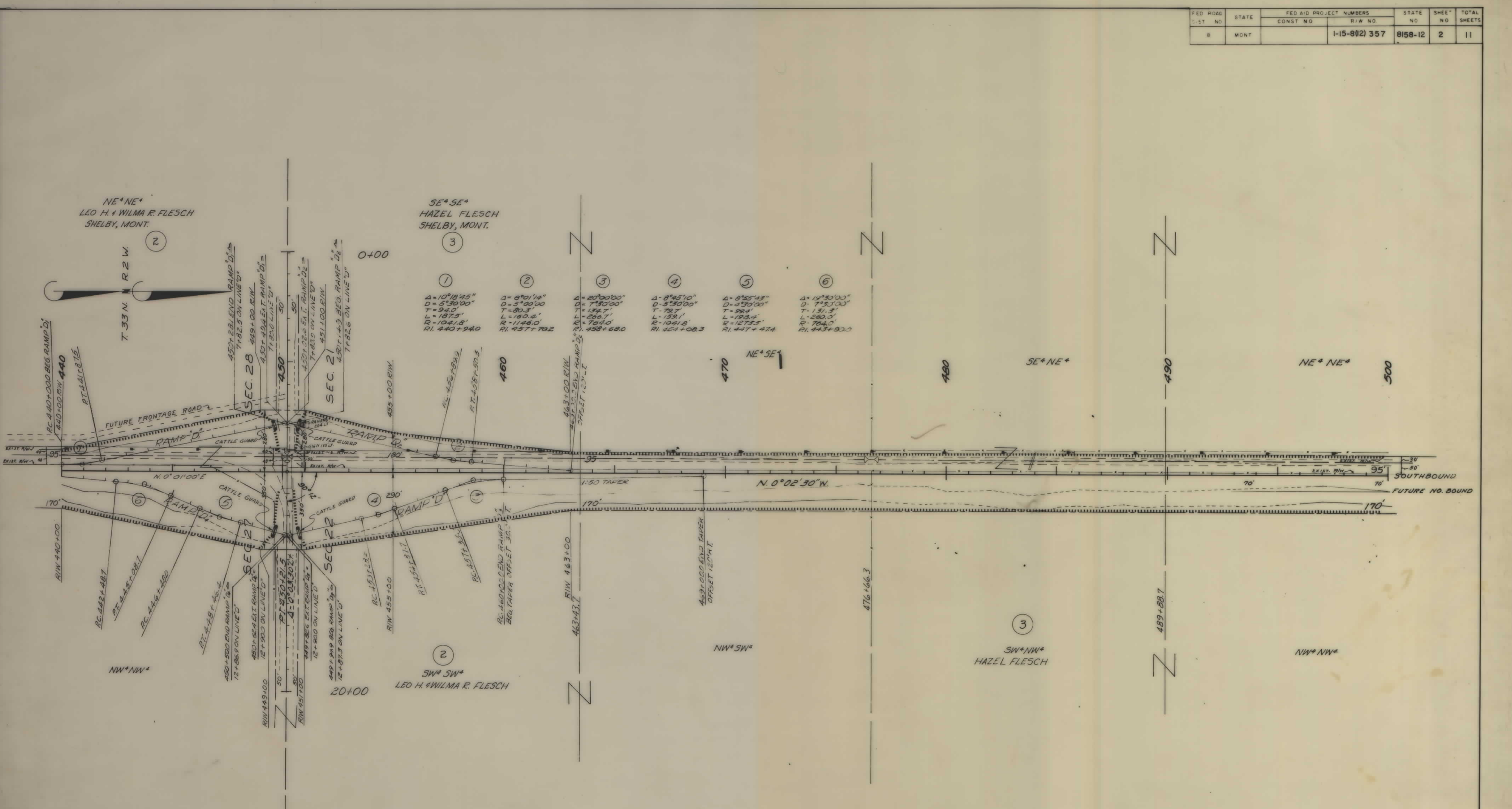


STA. 397+196 END TIGING 15 8(3)351 =  
STA 397+196 BEG. I 15-8(12)357

CONSTRUCTION LIMITS AS SHOWN ARE FOR ULTIMATE FOUR LANE CONSTRUCTION AS NOW DESIGNED

CONSTRUCTION LIMITS TOP OF CUT _____ TOE OF FILL _____	STATE OF MONTANA STATE HIGHWAY COMMISSION LAND REQUIRED FOR RIGHT OF WAY TOOLE COUNTY
MAP TRANS TO R/W _____ MAP REVISED _____	SCALE 1"=200' MAP COMPLETED _____
B.P.R. APPROVAL 8-29-62-11/2/62-11/14/62 10-31-66	

FED. ROAD DIST. NO.	STATE	FED. AID PROJECT NUMBERS		STATE NO.	SHEET NO.	TOTAL SHEETS
		CONST. NO.	R/W NO.			
8	MONT.		1-15-8(2) 357	8158-12	2	11

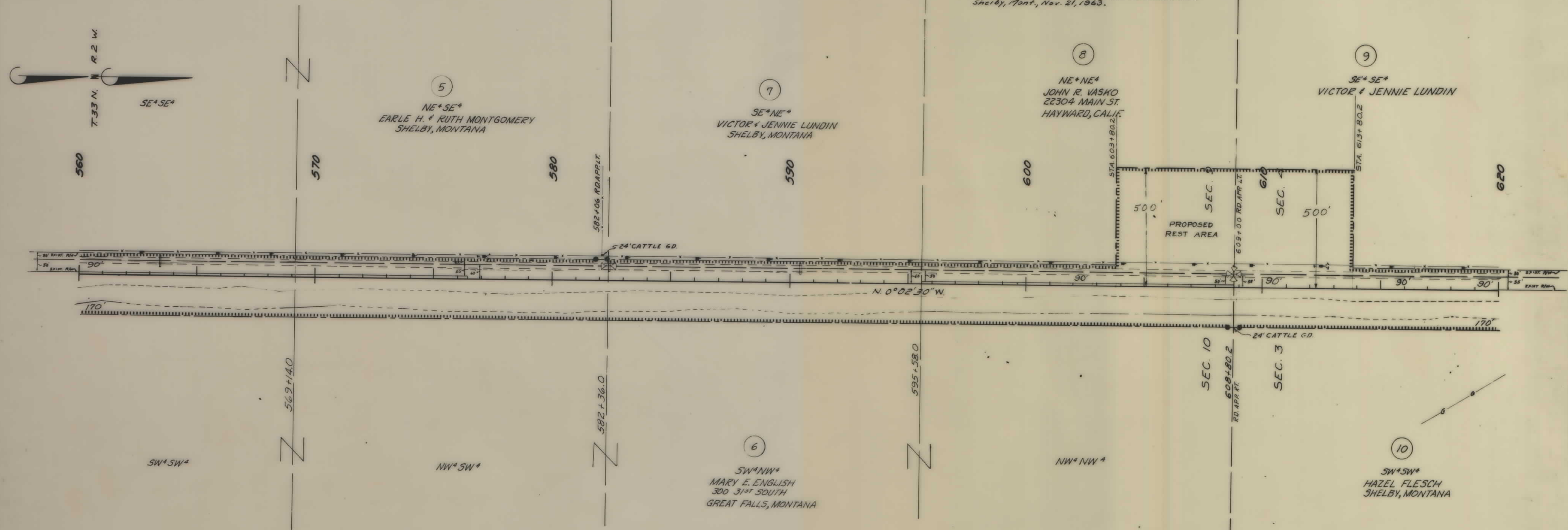


CONSTRUCTION LIMITS AS SHOWN ARE FOR ULTIMATE FOUR LANE CONSTRUCTION AS NOW DESIGNED

CONSTRUCTION LIMITS TOP OF CUT _____ TOE OF FILL _____	STATE OF MONTANA <b>STATE HIGHWAY COMMISSION</b> LAND REQUIRED FOR RIGHT OF WAY TOOLE COUNTY
MAP TRANS TO R/W _____ MAP REVISED _____	SCALE 1"=200' MAP COMPLETED _____
B.P.R. APPROVAL: <u>8-29-62-9/17/62-11/1/62</u> 6/1/19/62	



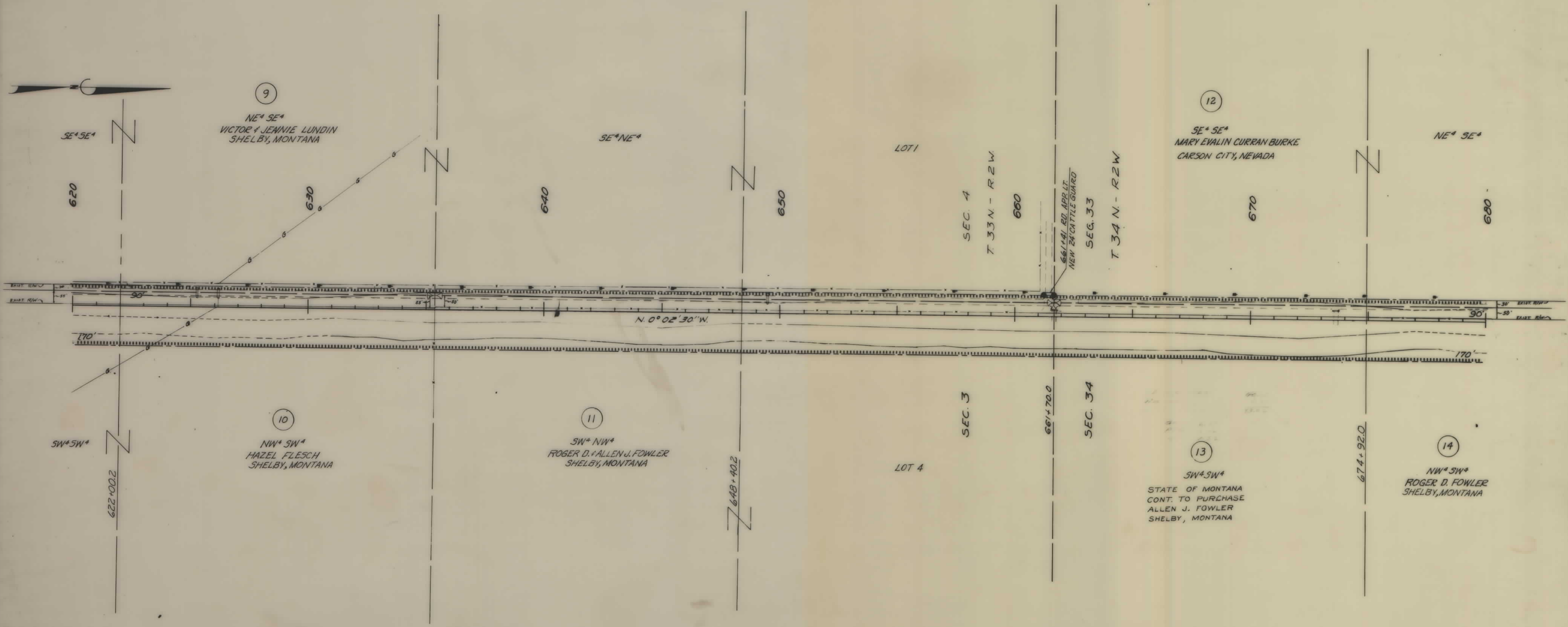
FED ROAD DIST NO	STATE	FED AID PROJECT NUMBERS		STATE NO	SHEET NO	TOTAL SHEETS
		CONST NO	R/W NO			
8	MONT		1-15-8(12) 357	8158-12	4	11



CONSTRUCTION LIMITS AS SHOWN ARE FOR ULTIMATE FOUR-LANE CONSTRUCTION AS NOW DESIGNED

CONSTRUCTION LIMITS - TOP OF CUT TOE OF FILL	STATE OF MONTANA STATE HIGHWAY COMMISSION LAND REQUIRED FOR RIGHT OF WAY TOOLE COUNTY
MAP TRANS TO R/W MAP REVISED	SCALE 1"=200'
B.P.R. APPROVAL 8-27-62-11/19/62 2/17/63-3/27/63	MAP COMPLETED

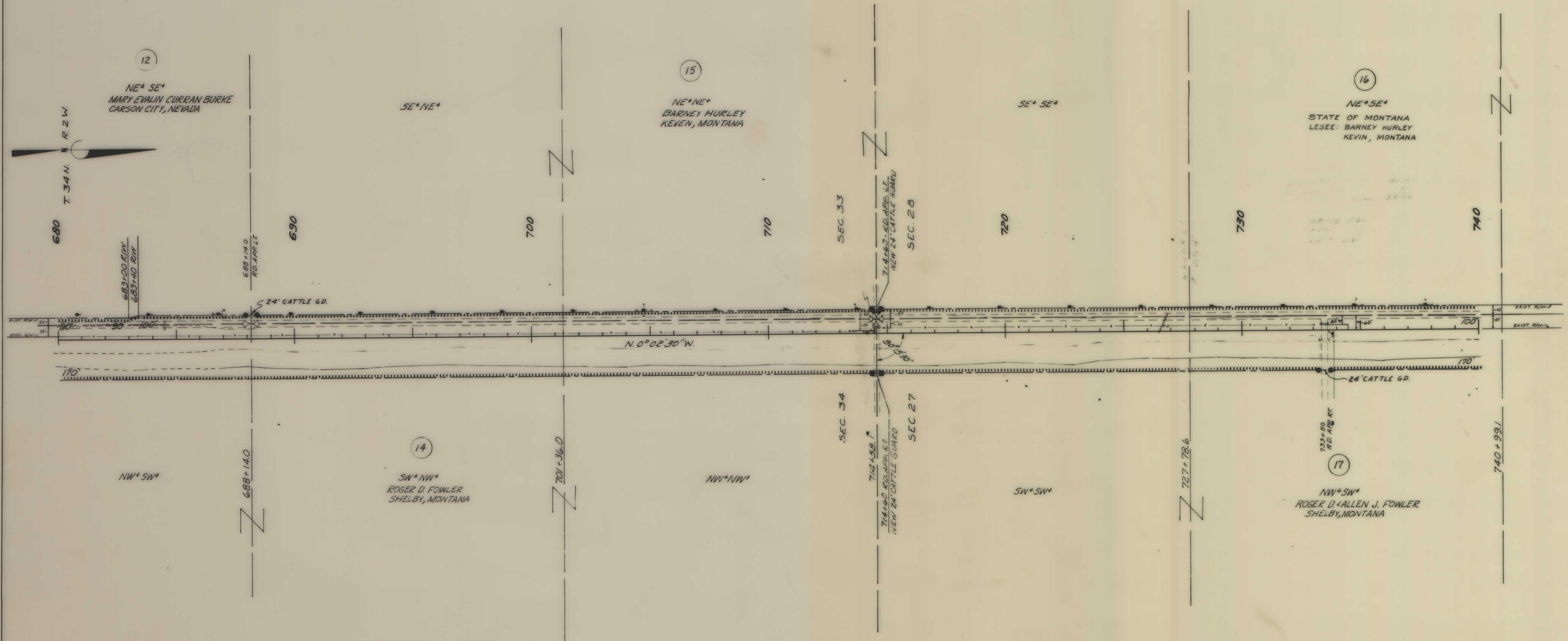
FED. ROAD DIST. NO.	STATE	FED. AID PROJECT NUMBERS		STATE NO.	SHEET NO.	TOTAL SHEETS
		CONSTR. NO.	R/W NO.			
8	MONT.		1-15-8(12) 357	8158-12	5	11



CONSTRUCTION LIMITS AS SHOWN ARE FOR ULTIMATE FOUR-LANE CONSTRUCTION AS NOW DESIGNED

CONSTRUCTION LIMITS TOP OF CUT _____ TOE OF FILL _____		STATE OF MONTANA STATE HIGHWAY COMMISSION LAND REQUIRED FOR RIGHT OF WAY	
MAP TRANS. TO R/W _____	MAP REVISED _____	TOOLE	COUNTY
B. P. R. APPROVAL <u>8-29-62-11/2/62-11/7/62</u> <u>2/7/63</u>		SCALE 1"=200' MAP COMPLETED _____	

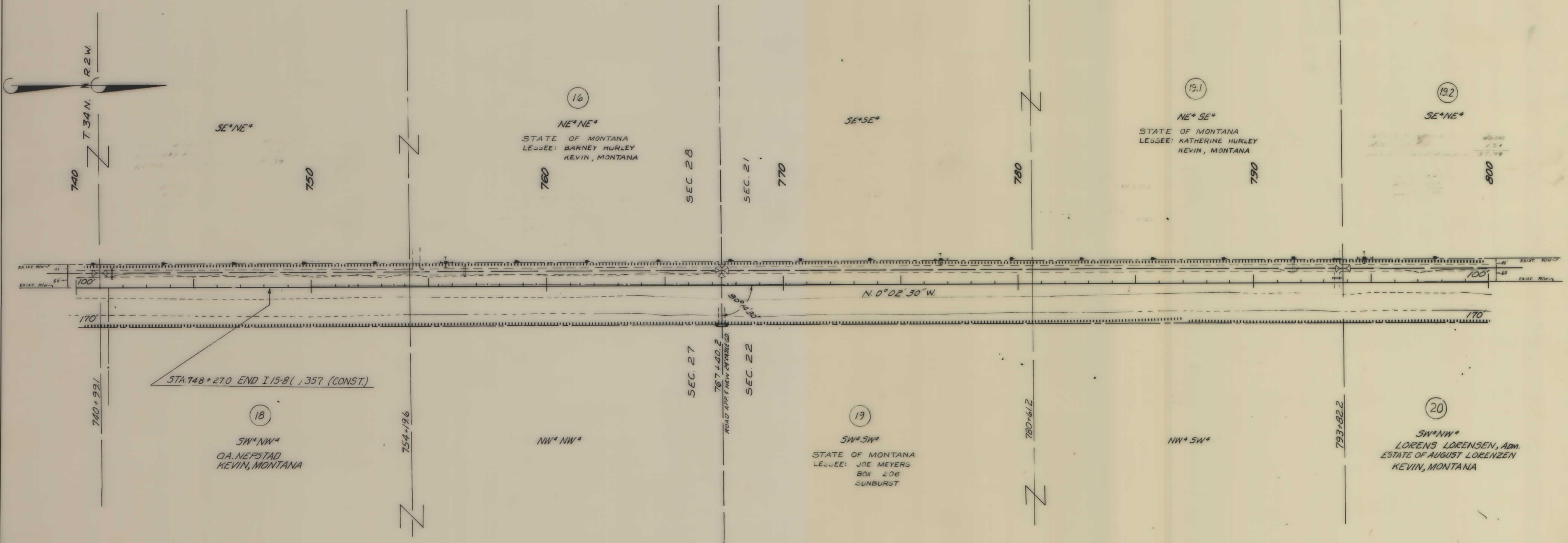
FED. ROAD DIST. NO.	STATE	FED. AID PROJECT NUMBERS		SHEET NO.	TOTAL SHEETS
		CONSTR. NO.	R.A. NO.		
8	W.V.A.	1-15-8(12) 357	8158-12	6	11



CONSTRUCTION LIMITS AS SHOWN ARE FOR ULTIMATE FOUR-LANE CONSTRUCTION AS NOW DESIGNED

CONSTRUCTION LIMITS		STATE OF MONTANA	
TOP OF CUT	-----	STATE HIGHWAY COMMISSION	
TOE OF FILL	-----	LAND REQUIRED FOR RIGHT OF WAY	
MAP TRANS. TO R/W	STATE 6-3-77	TOOLE	COUNTY
MAP REVISED	STATE 6-3-77	SCALE 1"=200' MAP COMPLETED	
B.P.R. APPROVAL	8-29-62-11/2/62-11/19/62 3/27/63		

FED. ROAD DIST. NO.	STATE	FED. AID PROJECT NUMBERS		STATE NO.	SHEET NO.	TOTAL SHEETS
		CONST. NO.	R/W NO.			
4	MONT.		1-15-8(12) 357	8158-12	7	11

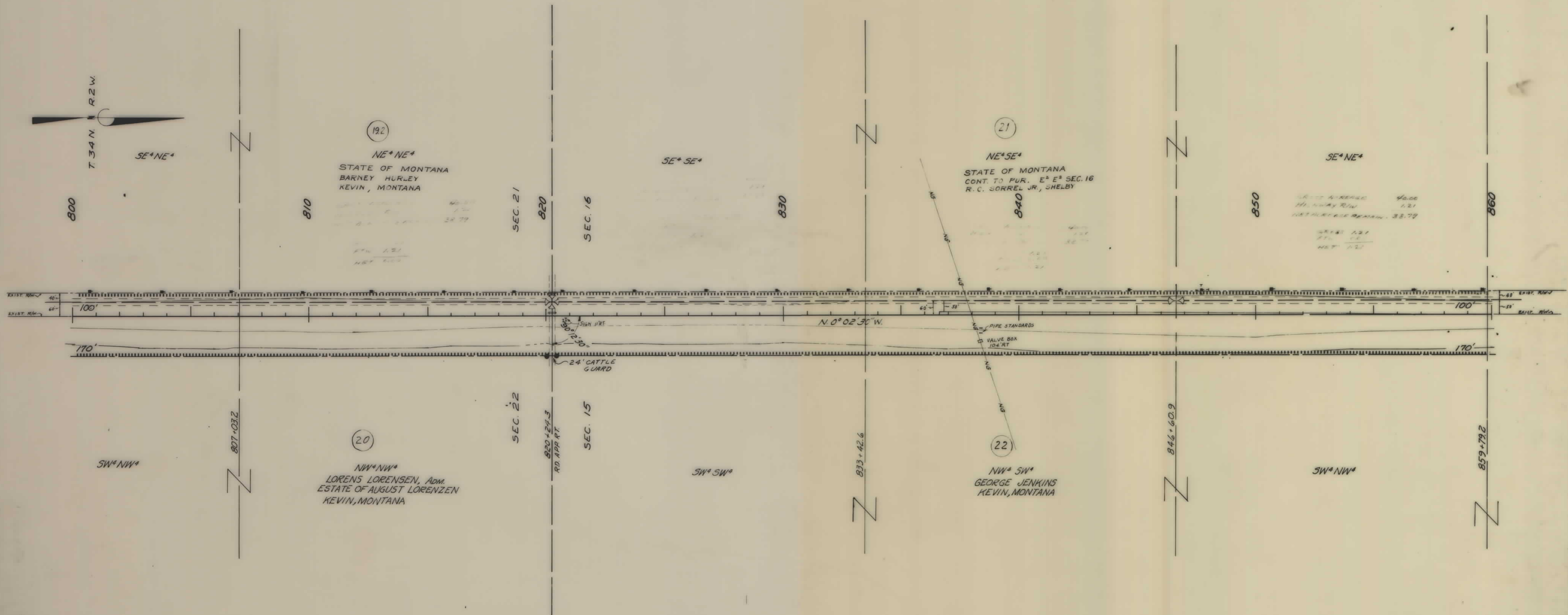


CONSTRUCTION LIMITS AS SHOWN ARE FOR ULTIMATE FOUR-LANE CONSTRUCTION AS NOW DESIGNED

CONSTRUCTION LIMITS TOP OF CUT _____ TOE OF FILL _____		STATE OF MONTANA STATE HIGHWAY COMMISSION LAND REQUIRED FOR RIGHT OF WAY	
MAP TRANS. TO R/W _____ MAP REVISED _____		TOOLE COUNTY	
B.P.R. APPROVAL 8-27-62-1012-442-11/12 11/12-3/27/63		SCALE 1"=200' MAP COMPLETED _____	

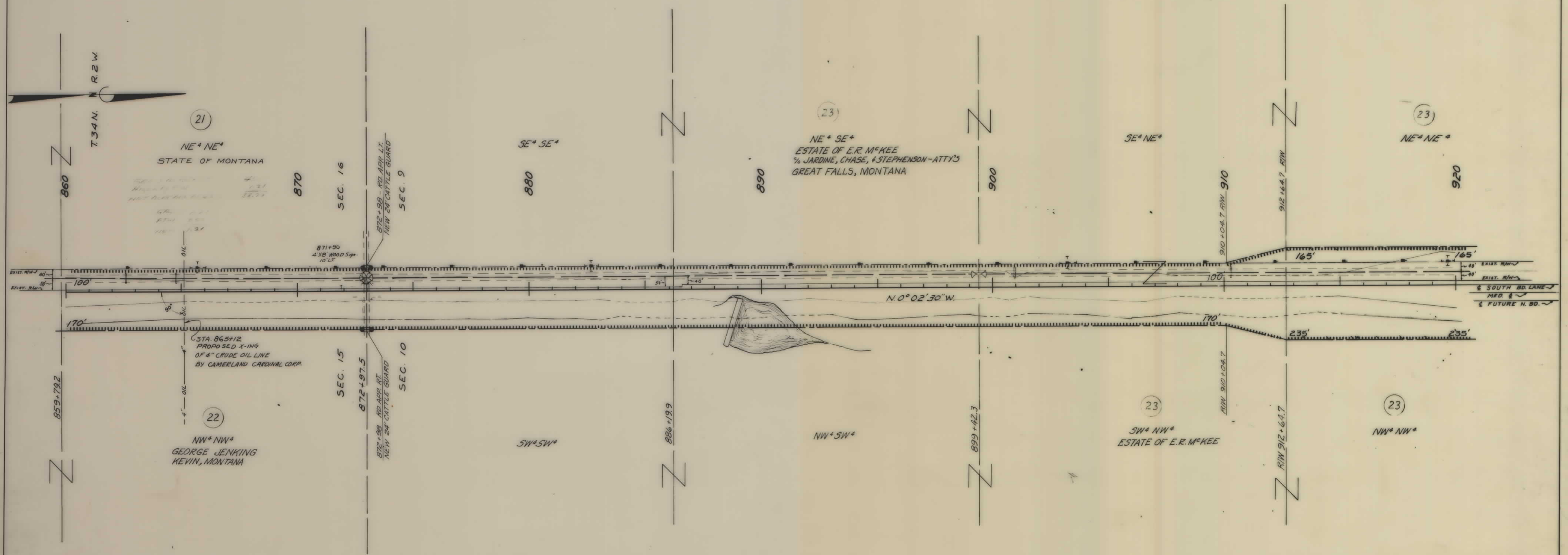


FED ROAD DIST NO	STATE	FED AID PROJECT NUMBERS		STATE NO	SHEET NO	TOTAL SHEETS
		CONST NO	R/W NO			
8	MONT		1-15-8 (12) 357	8158-12	8	11



CONSTRUCTION LIMITS AS SHOWN ARE FOR ULTIMATE FOUR-LANE CONSTRUCTION AS NOW DESIGNED

CONSTRUCTION LIMITS TOP OF CUT TOE OF FILL	STATE OF MONTANA STATE HIGHWAY COMMISSION LAND REQUIRED FOR RIGHT OF WAY TOOLE COUNTY
MAP TRANS TO R/W MAP REVISED STATE 6-3-77	SCALE 1"=200' MAP COMPLETED
B.P.R. APPROVAL 5-29-62-9/17/62 10/26/62-11/26/62-11/14/62 4/30/63	



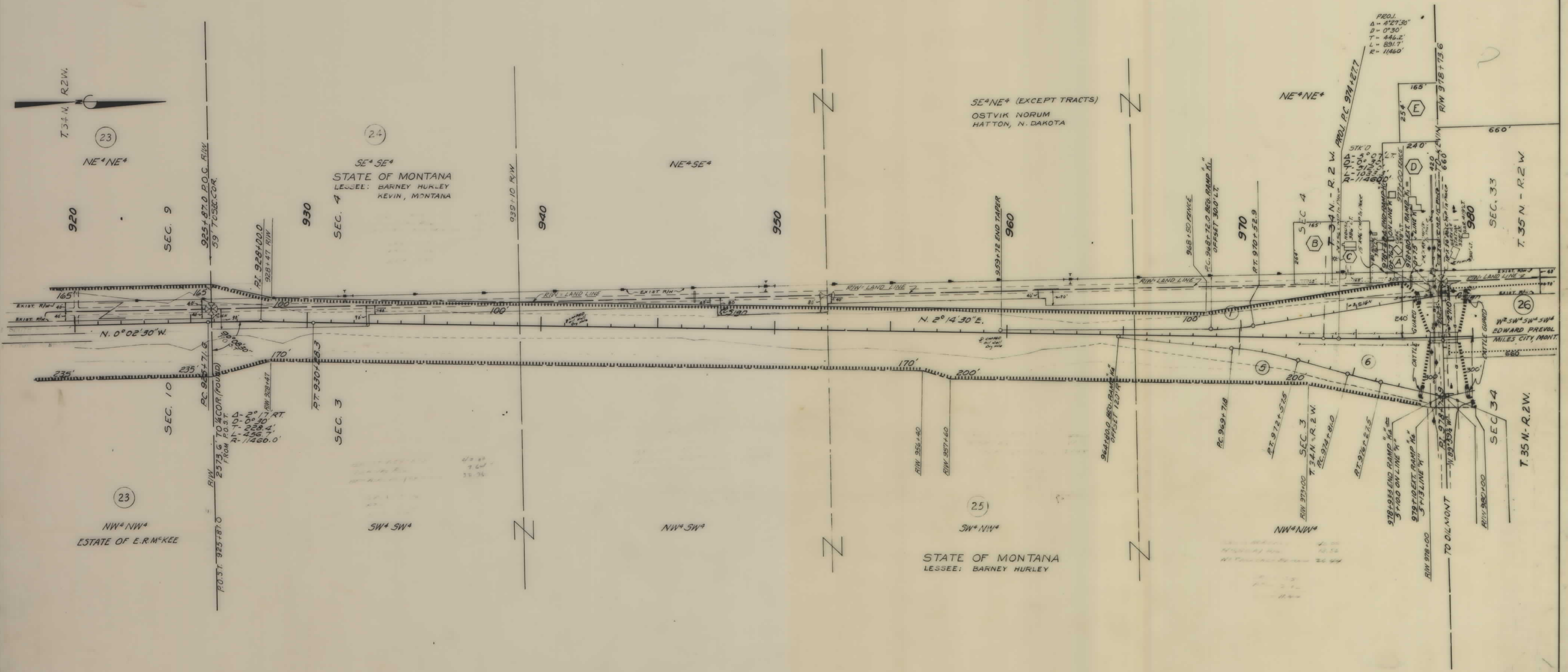
CONSTRUCTION LIMITS AS SHOWN ARE FOR ULTIMATE FOUR-LANE CONSTRUCTION AS NOW DESIGNED

CONSTRUCTION LIMITS TOP OF CUT _____ TOE OF FILL _____ MAP TRANS TO R/W _____ MAP REVISED _____ B.P.R. APPROVAL <u>8-29-62-9/17/62-10/16/62</u> <u>11/2/62-11/19/62-10/29/63</u>	STATE OF MONTANA <b>STATE HIGHWAY COMMISSION</b> LAND REQUIRED FOR RIGHT OF WAY TOOLE COUNTY SCALE 1"=200' MAP COMPLETED _____
--	--

FED. ROAD DIST. NO.	STATE	FED. AID PROJECT NUMBERS		STATE NO.	SHEET NO.	TOTAL SHEETS
		CONST. NO.	P.A. NO.			
5	MONT.		1-15-8(12)357	8158-12	10	11

①	⑤	⑥
Δ = 9°02'35" D = 5°00'00" T = 90.6' L = 180.9' R = 1146.0' RI-949+62.6	Δ = 2°55'48" D = 2°00'00" T = 73.3' L = 146.5' R = 286.5' RI-975+34.3	Δ = 10°00'00" D = 3°30'00" T = 143.2' L = 286.4' R = 1637.1' RI-971+15.0

TRACTS A & B THERON & LAURA JANE PELLETT SHELBY, MONT.  
 " C EDWIN I & NELLIE A. VANDER PAS OILMONT, MONT.  
 " D & E RAY GERMAN " "



CONSTRUCTION LIMITS AS SHOWN ARE FOR ULTIMATE FOUR-LANE CONSTRUCTION AS NOW DESIGNED

CONSTRUCTION LIMITS TOP OF CUT ----- TOE OF FILL ----- MAP TRANS TO R/W _____ MAP REVISED _____ B.P.R. APPROVAL 8-29-62-9/17/62-10/14/62 11/2/62-11/19/62	STATE OF MONTANA <b>STATE HIGHWAY COMMISSION</b> LAND REQUIRED FOR RIGHT OF WAY TOOLE COUNTY SCALE 1"=200' MAP COMPLETED _____
---	--

SE<sup>4</sup> SE<sup>4</sup> SE<sup>4</sup> (EXCEPT TRACTS)  
 1/2 BARNEY HURLEY, (ADM. OF ALRICK ESTATE)  
 1/2 W. CLYDE BITTNER  
 120 VASSAR ST., RENO, NEVADA

TRACTS IN SE<sup>4</sup> SEC. 33  
 TRACT (F) W. R. & LEONA BRITT, FOUR CORNERS, MONT.  
 " (G) LEONA BRITT " " "  
 " (H) JERRY CROWE FERDIG, MONTANA  
 " (I) CLARENCE W. KRUSE " " "

E<sup>2</sup> SE<sup>4</sup> (EXCEPT TRACTS)  
 OSTVIK NORUM  
 HATTON, NORTH DAKOTA

NE<sup>4</sup> NE<sup>4</sup>  
 E.F. M<sup>c</sup>CORMICK,  
 OSGOOD R. ELLINGWOOD, ET. AL.  
 BUTTE, MONTANA

SE<sup>4</sup> SE<sup>4</sup>  
 JAMES V. NEPSTAD  
 FERDIG, MONTANA

NOTE: PARCEL NO. 29A ON THIS PROJECT  
 WILL BE PART OF PARCEL NO. 2 ON  
 PROJ. I-15-8 (13) 369  
 29-A AREA OF TAKING = 1.90AC

GROSS TAKING = 0.29AC  
 PTW ACREAGE = 0.13AC  
 NET TAKE = 0.16AC

29-A AREA OF TAKING = 1.90AC

PARCEL 30-A AREAS  
 AREA OF TAKING = 0.49AC

NOTE: PARCEL NO. 30A ON THIS PROJECT  
 WILL BE PART OF PARCEL NO. 1 ON  
 PROJ. I-15-8 (13) 369

STA. 1044+72.0 END I-15-8(12)357 R/W =  
 STA. 1044+72.0 BEG. I-15-8 (13) 369 R/W

CONSTRUCTION LIMITS AS SHOWN ARE FOR ULTIMATE  
 FOUR-LANE CONSTRUCTION AS NOW DESIGNED

CONSTRUCTION LIMITS TOP OF CUT _____ TOE OF FILL _____	STATE OF MONTANA STATE HIGHWAY COMMISSION LAND REQUIRED FOR RIGHT OF WAY
MAP TRANS TO R/W _____ MAP REVISED _____	TOOLE COUNTY
B.P.R. APPROVAL 8-29-62-9-17-62-10-14-62 11-2-62-11-17-62-12-2-62	SCALE 1"=200' MAP COMPLETED _____

