

PLANS

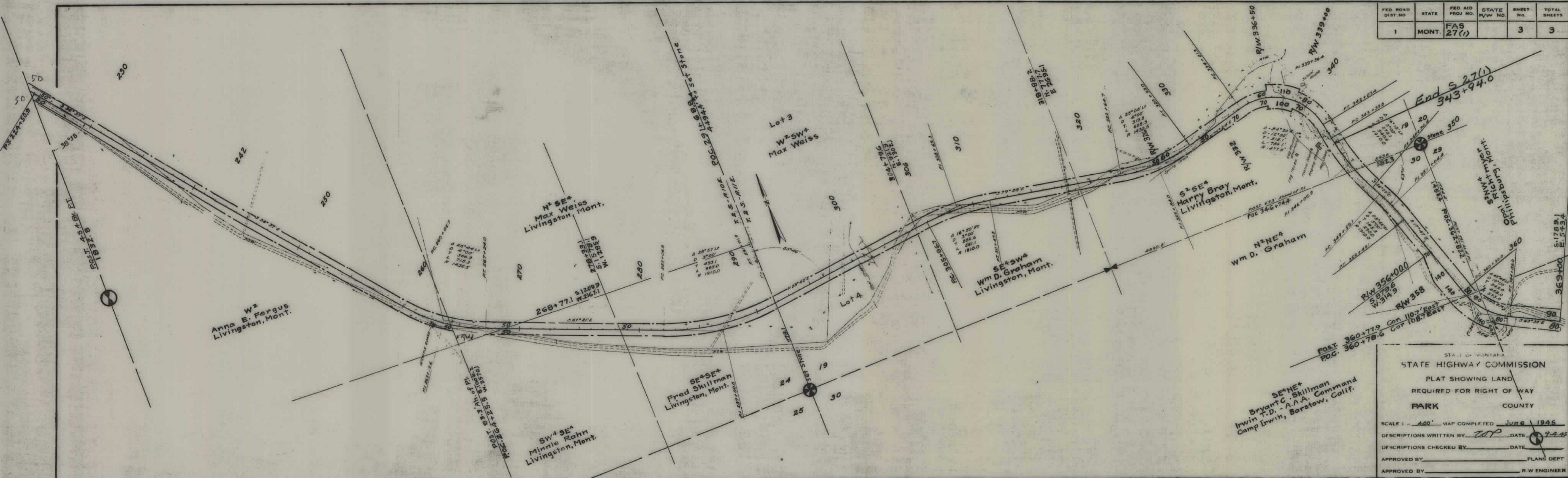
NOT

TO

SCALE







FED. ROAD DIST. NO.	STATE	FED. AID PROJ. NO.	STATE R/W NO.	SHEET NO.	TOTAL SHEETS
1	MONT.	FAS 27(1)		3	3

STATE OF MONTANA  
STATE HIGHWAY COMMISSION  
PLAT SHOWING LAND  
REQUIRED FOR RIGHT OF WAY  
PARK COUNTY

SCALE 1" = 400' MAP COMPLETED JUNE 1945  
DESCRIPTIONS WRITTEN BY TWP DATE 7-4-45  
DESCRIPTIONS CHECKED BY DATE  
APPROVED BY PLANS DEPT  
APPROVED BY R.W. ENGINEER