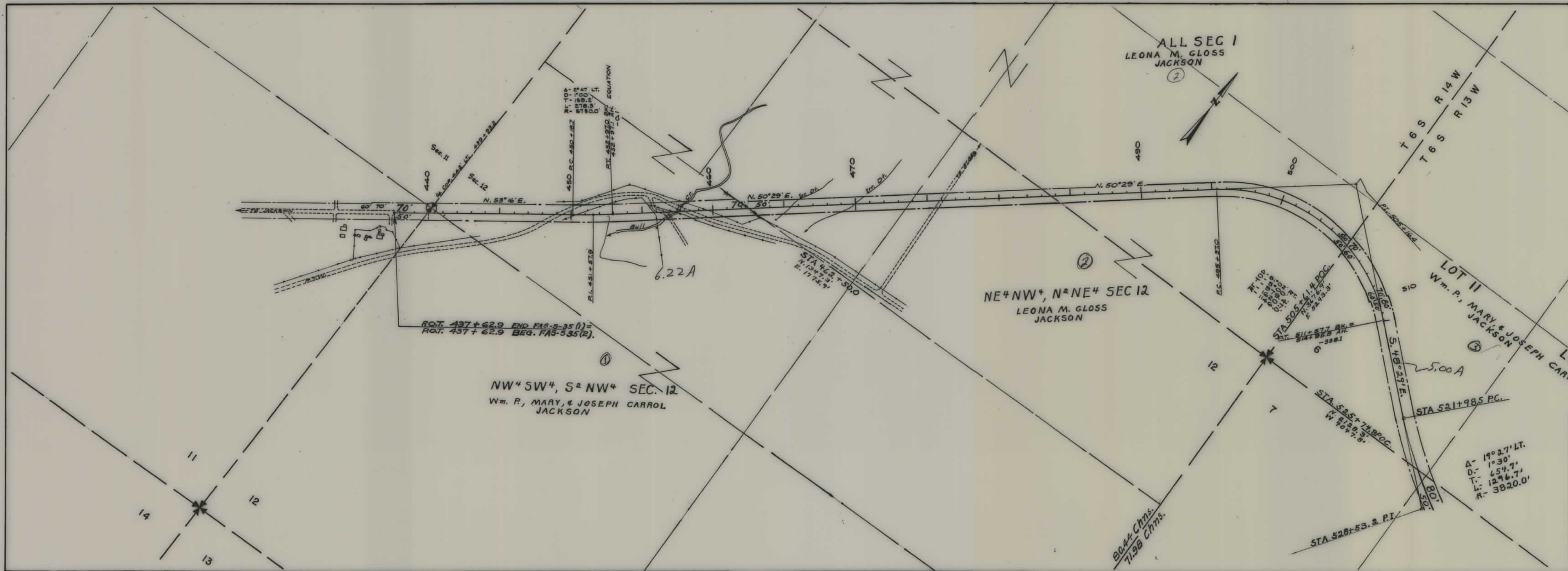


PLANS  
NOT  
TO  
SCALE



FED. ROAD DIST. NO.	STATE	FED. AID PROJ. NO.	R/W	SHEET NO.	TOTAL SHEETS
1	MONT.	35(2)	3035(1)	1	2

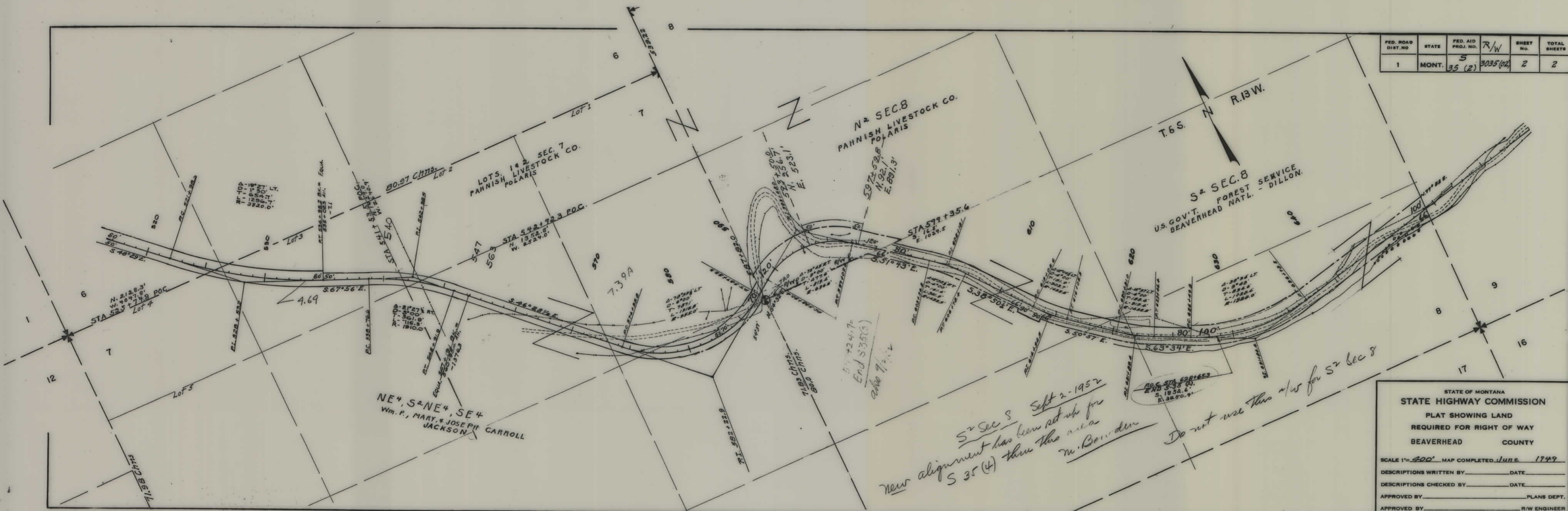


STATE OF MONTANA  
STATE HIGHWAY COMMISSION  
PLAT SHOWING LAND  
REQUIRED FOR RIGHT OF WAY  
BEAVERHEAD COUNTY

SCALE 1"= 400' MAP COMPLETED \_\_\_\_\_  
 DESCRIPTIONS WRITTEN BY \_\_\_\_\_ DATE \_\_\_\_\_  
 DESCRIPTIONS CHECKED BY \_\_\_\_\_ DATE \_\_\_\_\_  
 APPROVED BY \_\_\_\_\_ PLANS DEPT.  
 APPROVED BY \_\_\_\_\_ R/W ENGINEER



FED. ROAD DIST. NO.	STATE	FED. AID PROJ. NO.	R/W	SHEET NO.	TOTAL SHEETS
1	MONT.	35 (2)	3035 (02)	2	2



STATE OF MONTANA  
STATE HIGHWAY COMMISSION  
PLAT SHOWING LAND  
REQUIRED FOR RIGHT OF WAY  
BEAVERHEAD COUNTY

SCALE 1" = 400' MAP COMPLETED June 1949

DESCRIPTIONS WRITTEN BY \_\_\_\_\_ DATE \_\_\_\_\_

DESCRIPTIONS CHECKED BY \_\_\_\_\_ DATE \_\_\_\_\_

APPROVED BY \_\_\_\_\_ PLANS DEPT.

APPROVED BY \_\_\_\_\_ R/W ENGINEER