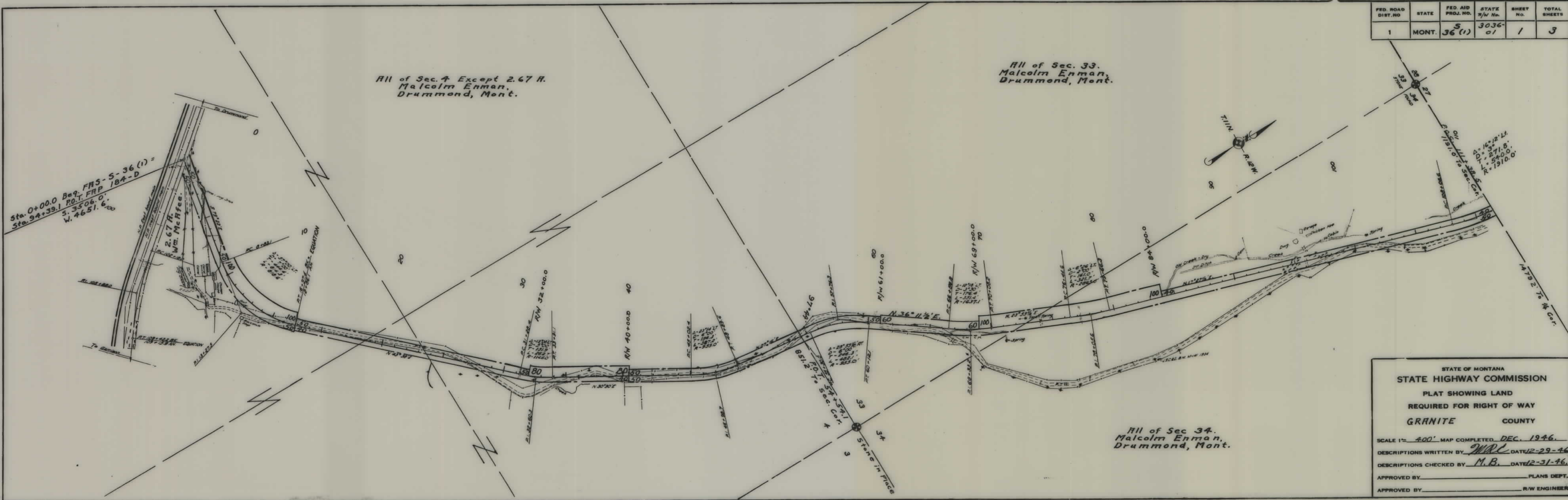


PLANS  
NOT  
TO  
SCALE



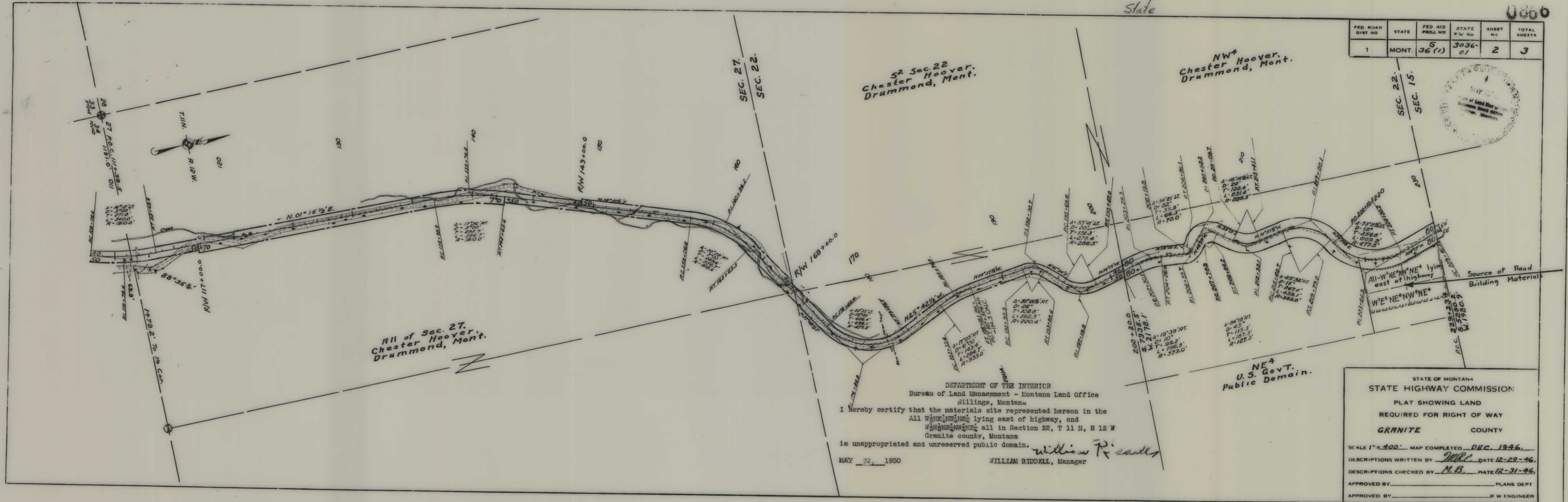




State

0860

FED. ROAD DIST. NO.	STATE	FED. AID PROJ. NO.	STATE R.W. NO.	SHEET NO.	TOTAL SHEETS
1	MONT.	36(1)	3036-01	2	3



All of Sec. 27.  
Chester Hoover,  
Drummond, Mont.

52 Sec. 22  
Chester Hoover,  
Drummond, Mont.

NW 1/4  
Chester Hoover,  
Drummond, Mont.

NE 1/4  
U.S. Gov't.  
Public Domain.

DEPARTMENT OF THE INTERIOR  
Bureau of Land Management - Montana Land Office  
Billings, Montana  
I hereby certify that the materials site represented hereon in the  
All W 1/2 NW 1/4 lying east of highway, and  
W 1/2 NW 1/4 all in Section 22, T 11 N, R 12 W  
Granite county, Montana  
is unappropriated and unreserved public domain.  
MAY 22, 1950  
WILLIAM RIDDELL, Manager

STATE OF MONTANA  
STATE HIGHWAY COMMISSION  
PLAT SHOWING LAND  
REQUIRED FOR RIGHT OF WAY  
GRANITE COUNTY  
SCALE 1" = 400' MAP COMPLETED DEC. 1946.  
DESCRIPTIONS WRITTEN BY M.B. DATE 12-29-46.  
DESCRIPTIONS CHECKED BY M.B. DATE 12-31-46.  
APPROVED BY \_\_\_\_\_ PLANS DEPT.  
APPROVED BY \_\_\_\_\_ R.W. ENGINEER





FED. ROAD DIST. NO.	STATE	FED. AID PROJ. NO.	STATE R/W No.	SHEET No.	TOTAL SHEETS
1	MONT.	36(1)	3036-01	3	3

STATE OF MONTANA  
 STATE HIGHWAY COMMISSION  
 PLAT SHOWING LAND  
 REQUIRED FOR RIGHT OF WAY  
 GRANITE COUNTY

SCALE 1"= 400' MAP COMPLETED DEC. 1946  
 DESCRIPTIONS WRITTEN BY MRC DATE 12-29-46  
 DESCRIPTIONS CHECKED BY M.B. DATE 12-31-46  
 APPROVED BY \_\_\_\_\_ PLANS DEPT.  
 APPROVED BY \_\_\_\_\_ R/W ENGINEER