

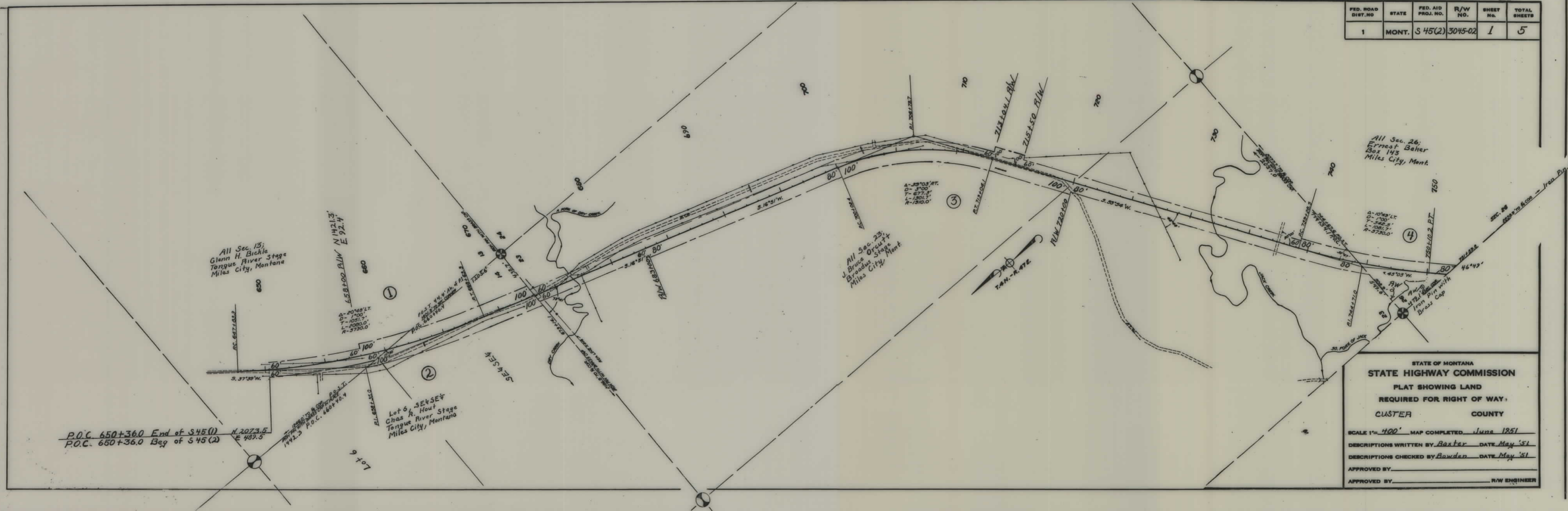
PLANS

NOT

TO

SCALE

FED. ROAD DIST. NO.	STATE	FED. AID PROJ. NO.	R/W NO.	SHEET NO.	TOTAL SHEETS
1	MONT.	S 45(2)	3045-02	1	5



P.O.C. 650+360 End of S 45(1)
 P.O.C. 650+360 Beg of S 45(2)

All Sec. 13;
 Glenn H. Bickle
 Tongue River Stage
 Miles City, Montana

Lot 6, SE 4 SE 4
 Chas. R. Hout
 Tongue River Stage
 Miles City, Montana

All Sec. 23;
 J. Bruce Orcutt
 Broadus Stage
 Miles City, Mont.

All Sec. 26;
 Ernest Baker
 Box 143
 Miles City, Mont.

STATE OF MONTANA
 STATE HIGHWAY COMMISSION
 PLAT SHOWING LAND
 REQUIRED FOR RIGHT OF WAY
 CUSTER COUNTY

SCALE 1" = 400' MAP COMPLETED June 1851
 DESCRIPTIONS WRITTEN BY Baxter DATE May '51
 DESCRIPTIONS CHECKED BY Bowden DATE May '51
 APPROVED BY _____
 APPROVED BY _____ R/W ENGINEER

FED. ROAD DIST. NO.	STATE	FED. AID PROJ. NO.	R/W NO.	SHEET NO.	TOTAL SHEETS
1	MONT.	545(2)	304502	4	5

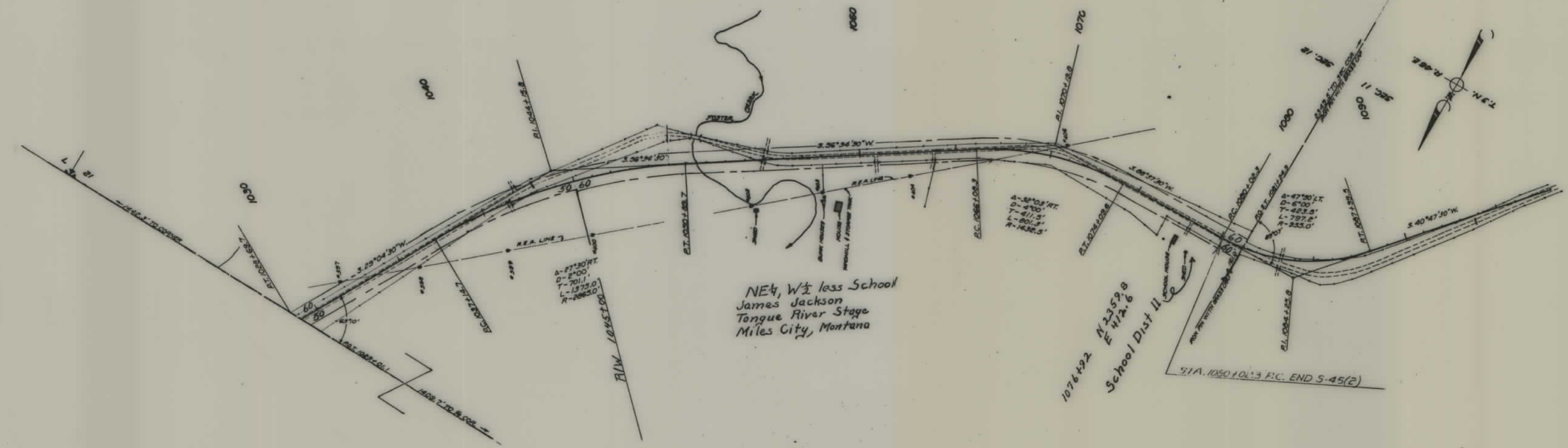


STATE OF MONTANA
STATE HIGHWAY COMMISSION
 PLAT SHOWING LAND
 REQUIRED FOR RIGHT OF WAY
 CUSTER COUNTY

SCALE 1" = 400' MAP COMPLETED June 1951
 DESCRIPTIONS WRITTEN BY Baxter DATE May '51
 DESCRIPTIONS CHECKED BY Bowden DATE May '51

APPROVED BY _____
 APPROVED BY _____ R/W ENGINEER

FED. ROAD DIST. NO.	STATE	FED. AID PROJ. NO.	R/W No.	SHEET NO.	TOTAL SHEETS
1	MONT.	S 45(2)	304502	5	5



STATE OF MONTANA
STATE HIGHWAY COMMISSION
 PLAT SHOWING LAND
 REQUIRED FOR RIGHT OF WAY
 CUSTER COUNTY

SCALE 1" = 400' MAP COMPLETED June 1951
 DESCRIPTIONS WRITTEN BY Baxter DATE May '51
 DESCRIPTIONS CHECKED BY Borden DATE May '51
 APPROVED BY _____
 APPROVED BY _____ R/W ENGINEER