

PLANS

NOT

TO

SCALE



FED. ROAD DIST. NO.	STATE	FED. AID PROJ. NO.	R/W NO.	SHEET NO.	TOTAL SHEETS
8	MONT.	5-48(2)	3048-02	1	4

Construction Contract Awarded June 17, 1953

STATE OF MONTANA
STATE HIGHWAY COMMISSION

PLAT SHOWING LAND
REQUIRED FOR RIGHT OF WAY

Musselshell COUNTY

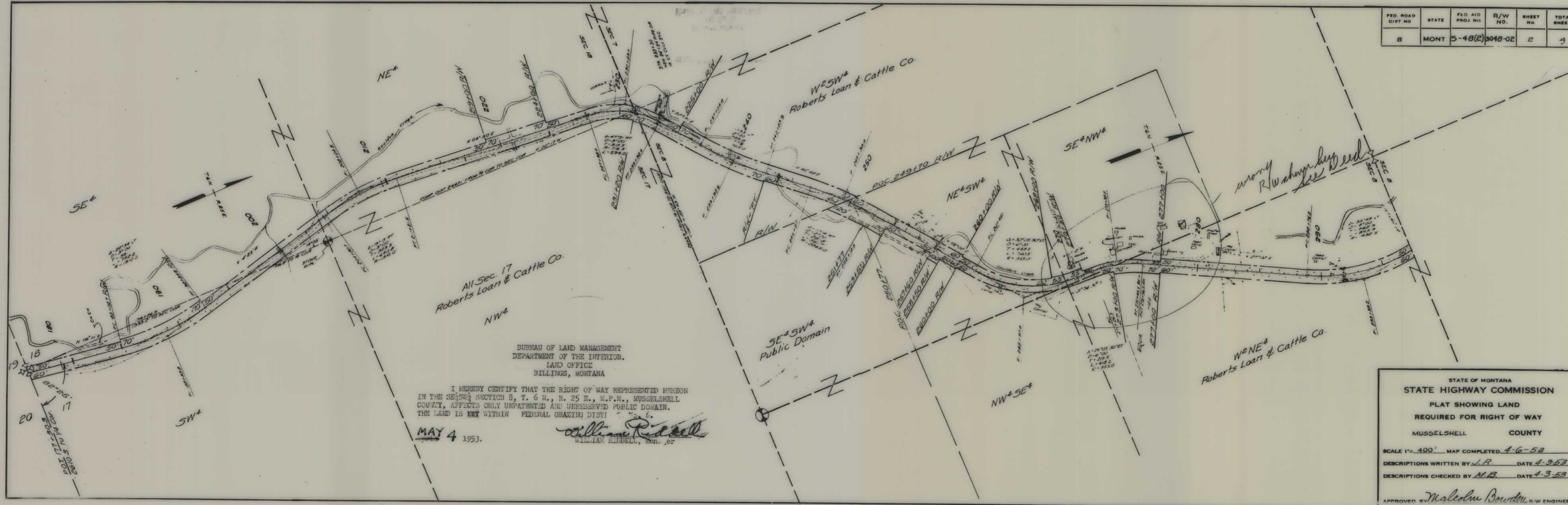
SCALE 1"= 400' MAP COMPLETED 12-15-52

DESCRIPTIONS WRITTEN BY L.B. DATE 1-5-53

DESCRIPTIONS CHECKED BY M.B. DATE 1-6-53

APPROVED BY *Malcolm Bowden* R/W ENGINEER

FED. ROAD DIST NO.	STATE	FED. AID PROJ. NO.	R/W NO.	SHEET NO.	TOTAL SHEETS
8	MONT	5-48(2)	3048-02	2	4



BUREAU OF LAND MANAGEMENT
 DEPARTMENT OF THE INTERIOR
 LAND OFFICE
 BILLINGS, MONTANA

I HEREDY CERTIFY THAT THE RIGHT OF WAY REPRESENTED HEREON
 IN THE SE1/4 SW1/4 SECTION 8, T. 6 N., R. 25 E., M.P.M., MUSSELSHELL
 COUNTY, AFFECTS ONLY UNPATENTED AND UNRESERVED PUBLIC DOMAIN.
 THE LAND IS NOT WITHIN FEDERAL GRAZING DISTRICT No. 6.

MAY 4 1953.

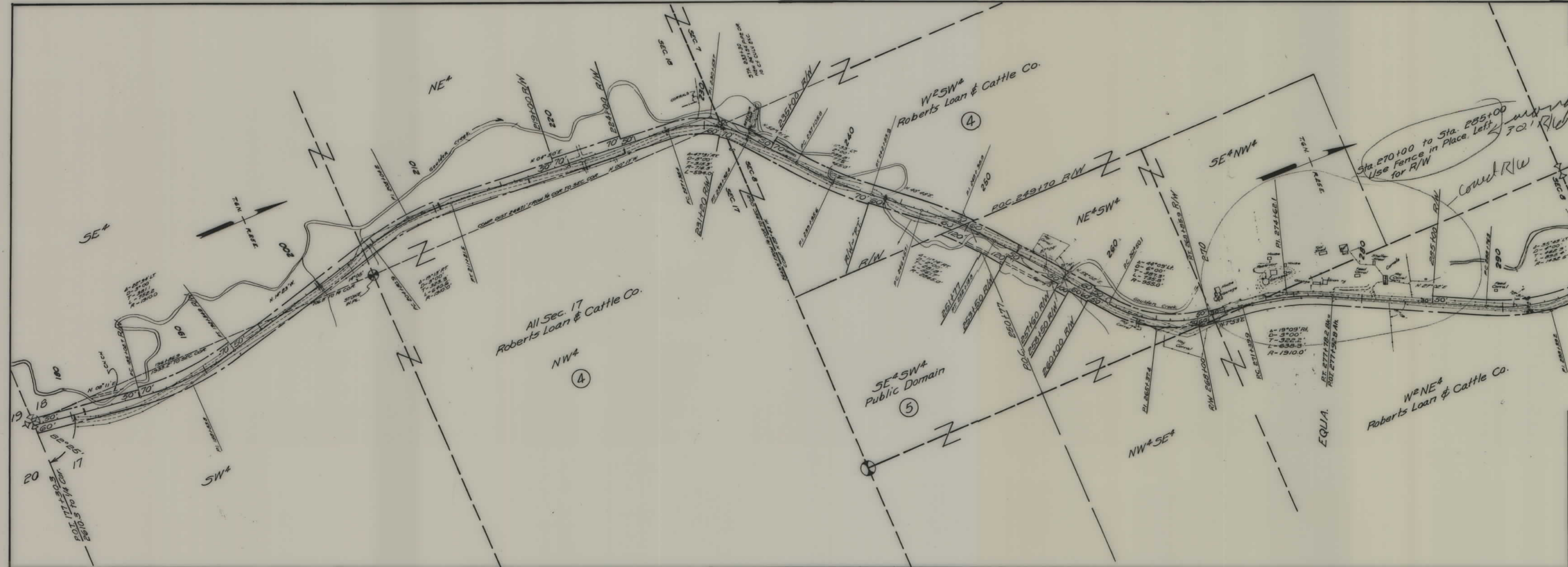
William Riddell
 WILLIAM RIDDELL, Surveyor

STATE OF MONTANA
 STATE HIGHWAY COMMISSION
 PLAT SHOWING LAND
 REQUIRED FOR RIGHT OF WAY
 MUSSELSHELL COUNTY

SCALE 1" = 400' MAP COMPLETED 4-6-53
 DESCRIPTIONS WRITTEN BY J.R. DATE 4-3-53
 DESCRIPTIONS CHECKED BY M.B. DATE 4-3-53

APPROVED BY *Malcolm Bowden* R.W. ENGINEER

FED. ROAD DIST. NO.	STATE	FED. AID PROJ. NO.	R/W NO.	SHEET NO.	TOTAL SHEETS
8	MONT.	S-48(E)	3048-02	2	4



STATE OF MONTANA
 STATE HIGHWAY COMMISSION
 PLAT SHOWING LAND
 REQUIRED FOR RIGHT OF WAY
 MUSSELSHELL COUNTY

SCALE 1" = 400' MAP COMPLETED 5-1-53
 DESCRIPTIONS WRITTEN BY L.R. DATE 5-1-53
 DESCRIPTIONS CHECKED BY M.B. DATE 5-1-53

APPROVED BY *Malcolm Bowden* R/W ENGINEER

FED. ROAD DIST. NO.	STATE	FED. AID PROJ. NO.	R/W No.	SHEET NO.	TOTAL SHEETS
5	MONT.	48(E)	3048-02	3	4

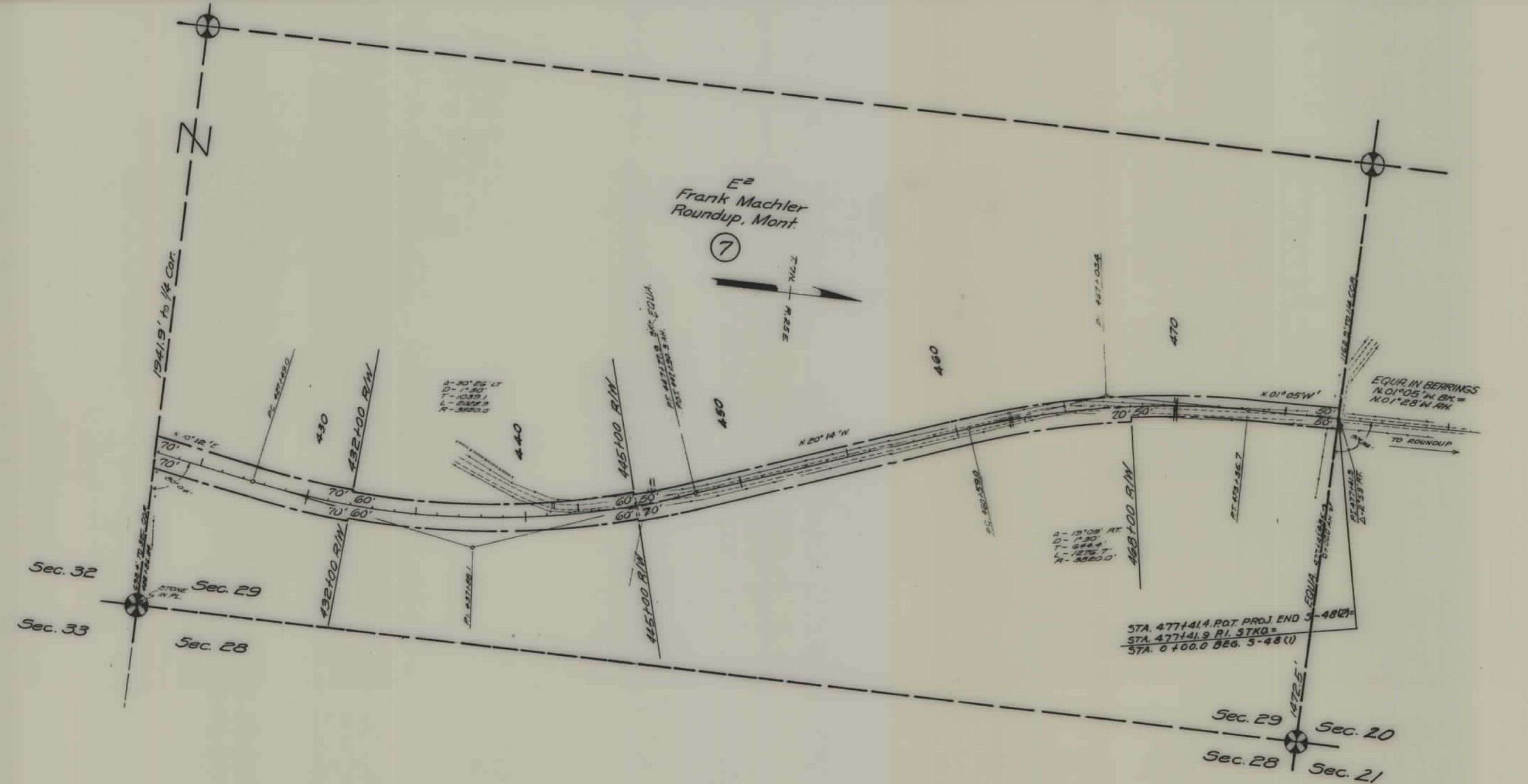


STATE OF MONTANA
STATE HIGHWAY COMMISSION
 PLAT SHOWING LAND
 REQUIRED FOR RIGHT OF WAY
 MUSSELSHELL COUNTY

SCALE 1" = 400' MAP COMPLETED 4-7-53
 DESCRIPTIONS WRITTEN BY L. B. DATE 1-5-53
 DESCRIPTIONS CHECKED BY M. B. DATE 1-6-53

APPROVED BY *Malcolm Bowden* R/W ENGINEER

FED. ROAD DIST. NO.	STATE	FED. AID PROJ. NO.	R/W No.	SHEET No.	TOTAL SHEETS
8	MONT.	S 48(E)	3048-02	4	4



STATE OF MONTANA
STATE HIGHWAY COMMISSION
 PLAT SHOWING LAND
 REQUIRED FOR RIGHT OF WAY
 MUSSELSHELL COUNTY

SCALE 1" = 400' MAP COMPLETED 4-7-53
 DESCRIPTIONS WRITTEN BY L.B. DATE 1-5-53
 DESCRIPTIONS CHECKED BY M.B. DATE 1-6-53

APPROVED BY *Malcolm Bowden* R/W ENGINEER