

PLANS

NOT

TO

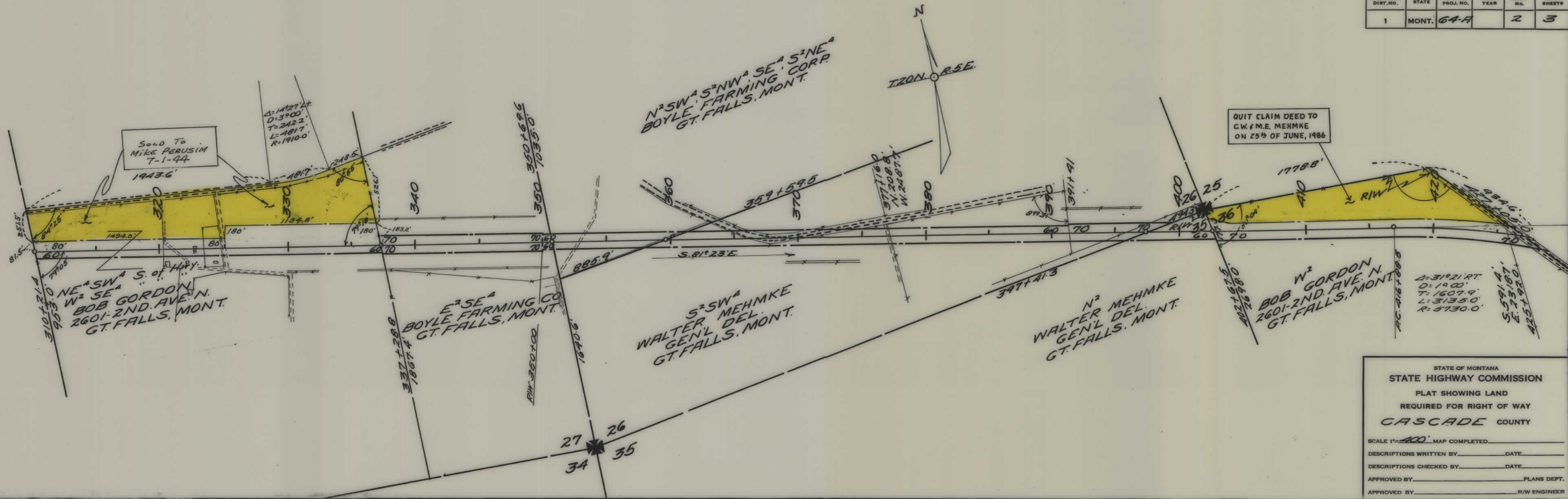
SCALE







FED. ROAD DIST. NO.	STATE	FED. AID PROJ. NO.	FISCAL YEAR	SHEET NO.	TOTAL SHEETS
1	MONT.	64-H		2	3



STATE OF MONTANA  
STATE HIGHWAY COMMISSION  
PLAT SHOWING LAND  
REQUIRED FOR RIGHT OF WAY  
CASCADE COUNTY

SCALE 1"=400' MAP COMPLETED \_\_\_\_\_

DESCRIPTIONS WRITTEN BY \_\_\_\_\_ DATE \_\_\_\_\_

DESCRIPTIONS CHECKED BY \_\_\_\_\_ DATE \_\_\_\_\_

APPROVED BY \_\_\_\_\_ PLANS DEPT.

APPROVED BY \_\_\_\_\_ R/W ENGINEER



FED. ROAD DIST. NO.	STATE	FED. AID PROJ. NO.	FISCAL YEAR	SHEET NO.	TOTAL SHEETS
1	MONT.	64-A		3	3

APPROX. LOCATION OF  
NEW R/W LINE FOR  
NH 60-2(60)71

PARTIAL DISCHARGE OF EASE.  
DOC. NO. R 0349592 ES  
RECORDED: 12/29/2017

$\Delta = 31^{\circ}21'RT.$   
 $D = 1^{\circ}00'$   
 $T = 1607.9'$   
 $L = 3135.0'$   
 $R = 5730.0'$

QUITCLAIM DEED TO:  
C LAZY J RANCH, INC.  
DOC. NO. R0347483 QC  
RECORDED: 11/09/2017

SNOW FENCE EASE. (HATCHED)  
REFERRED TO IN  
DOC. NO. R0347483 QC  
RECORDED: 11/09/2017

RELEASE  
DOC. NO. R 0349591 ES  
RECORDED: 12/29/2017

430+55.3 END F.A.P. 64-A-4  
450+80.3 P.O.T. F.A.P. 64-A-ORIG.

QUITCLAIM DEED TO:  
C LAZY J RANCH, INC.  
DOC. NO. R0347483 QC  
RECORDED: 11/09/2017

481+55.8 END F.A.P. 64-A-4  
510+60.8 P.O.T. F.A.P. 64-A-ORIG.

STATE OF MONTANA  
STATE HIGHWAY COMMISSION  
PLAT SHOWING LAND  
REQUIRED FOR RIGHT OF WAY  
CASCADE COUNTY

SCALE 1"=400' MAP COMPLETED \_\_\_\_\_

DESCRIPTIONS WRITTEN BY \_\_\_\_\_ DATE \_\_\_\_\_

DESCRIPTIONS CHECKED BY \_\_\_\_\_ DATE \_\_\_\_\_

APPROVED BY \_\_\_\_\_ PLANS DEPT.

APPROVED BY \_\_\_\_\_ R/W ENGINEER