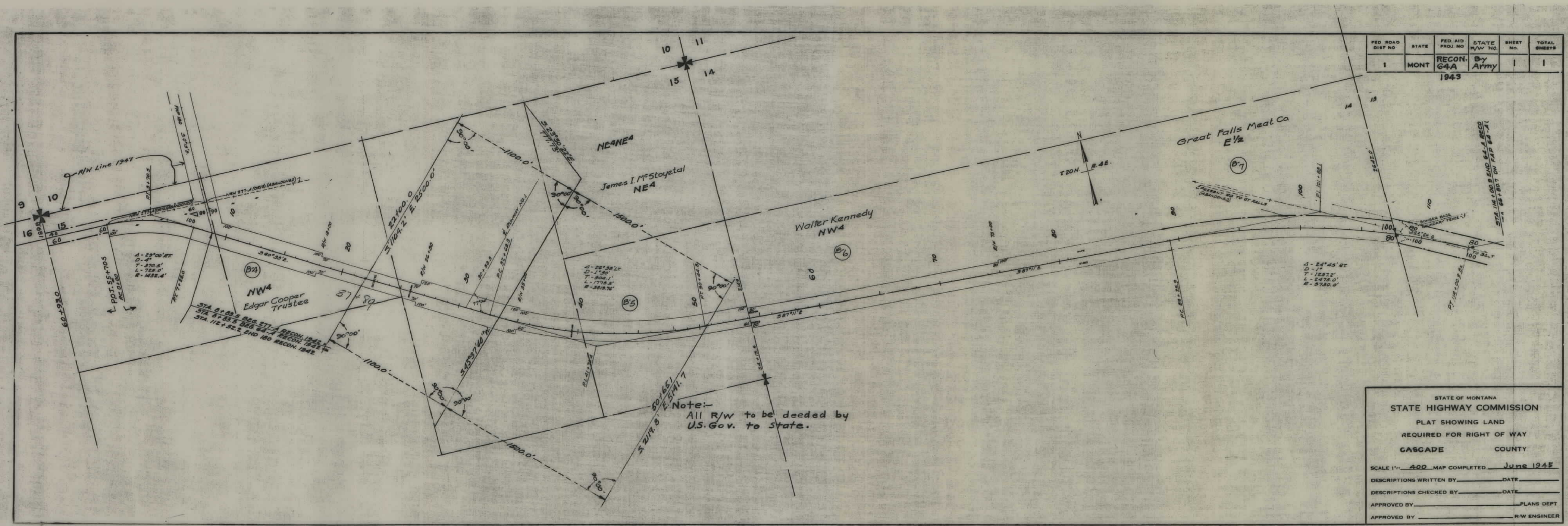


PLANS

NOT

TO

SCALE



FED. ROAD DIST NO.	STATE	FED. AID PROJ. NO.	STATE R/W NO.	SHEET NO.	TOTAL SHEETS
1	MONT	RECON. 64A	By Army	1	1

1943

Note:-
All R/W to be deeded by
U.S. Gov. to State.

STATE OF MONTANA	
STATE HIGHWAY COMMISSION	
PLAT SHOWING LAND	
REQUIRED FOR RIGHT OF WAY	
CASCADE	COUNTY
SCALE 1"=400' MAP COMPLETED June 1945	
DESCRIPTIONS WRITTEN BY	DATE
DESCRIPTIONS CHECKED BY	DATE
APPROVED BY	PLANS DEPT
APPROVED BY	R/W ENGINEER