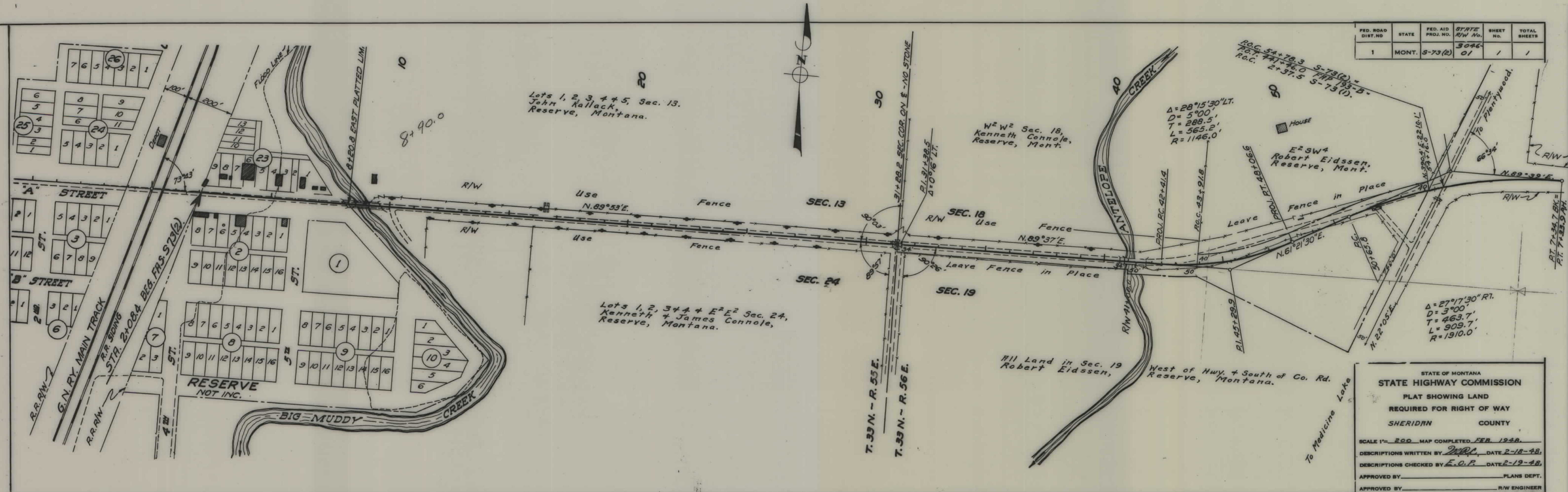


PLANS  
NOT  
TO  
SCALE





FED. ROAD DIST. NO.	STATE	FED. AID PROJ. NO.	STATE R/W No.	SHEET NO.	TOTAL SHEETS
1	MONT.	S-73(2)	3046-01	1	1

STATE OF MONTANA  
**STATE HIGHWAY COMMISSION**  
 PLAT SHOWING LAND  
 REQUIRED FOR RIGHT OF WAY  
 SHERIDAN COUNTY

SCALE 1" = 200' MAP COMPLETED FEB 1948.  
 DESCRIPTIONS WRITTEN BY M.P.C. DATE 2-18-48.  
 DESCRIPTIONS CHECKED BY E.O.P. DATE 2-19-48.  
 APPROVED BY \_\_\_\_\_ PLANS DEPT.  
 APPROVED BY \_\_\_\_\_ R/W ENGINEER